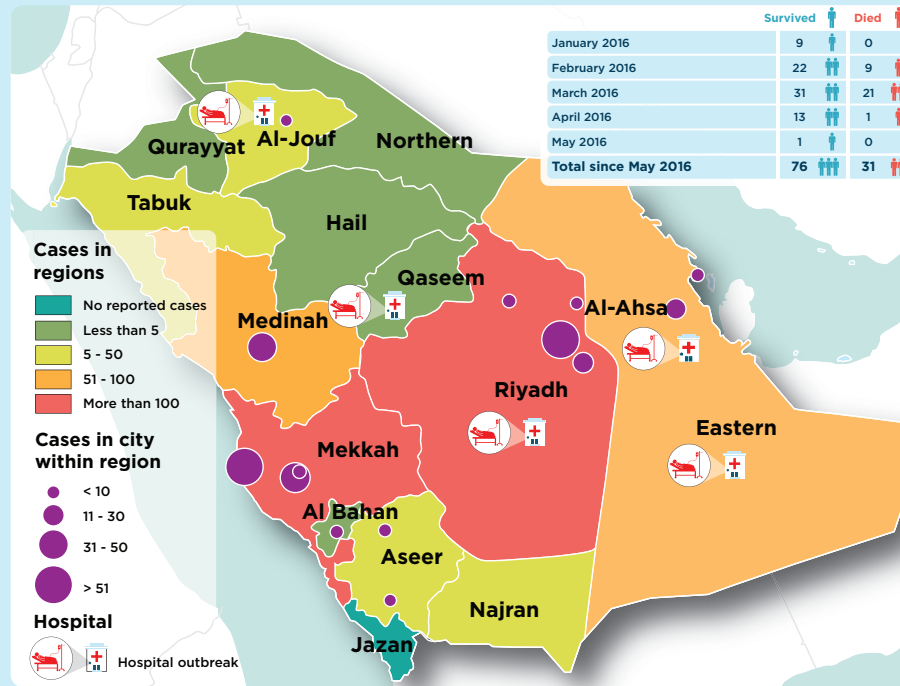


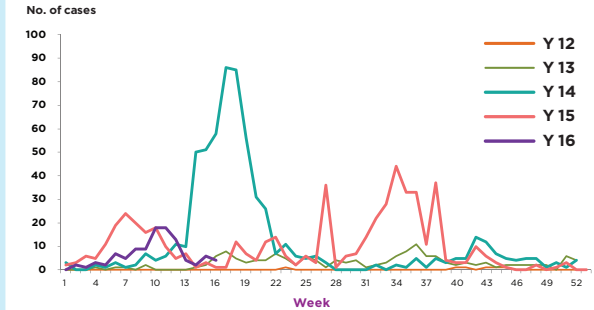
### HIGHLIGHTS

- In the month of May 2016, only one laboratory-confirmed case of Middle East respiratory syndrome coronavirus (MERS-CoV) was reported from Saudi Arabia with no death. After Bahrain, no new country reported MERS cases during the current month. Globally, since April 2012, WHO has been notified of 1789 laboratory-confirmed cases of MERS-CoV, including at least 681 deaths.
- After the recent surge in cases reported in March 2016, a steady decline in MERS cases has been reported in Saudi Arabia both during the month of April and May.
- No new clusters or hospital outbreaks of MERS were reported during the month of May. The hospital outbreak that was reported during the months of February and March in Buridah city of the Qaseem region is reported to be over.
- Compared to 2015, there has not been a substantial increase in the number of reported cases. The age characteristics of the cases reported in 2016 do not show any significant difference when compared with age characteristics of cases reported from 2012 to 2015 (combined).
- The age group of those aged 50-59 years continues to be group at highest risk for acquiring infection as primary cases, while the group at highest risk for acquiring infection as secondary cases is those aged 30-39 years. The majority of deaths among primary and secondary cases have occurred in the age groups of 50-59 and 70-79 years, respectively.

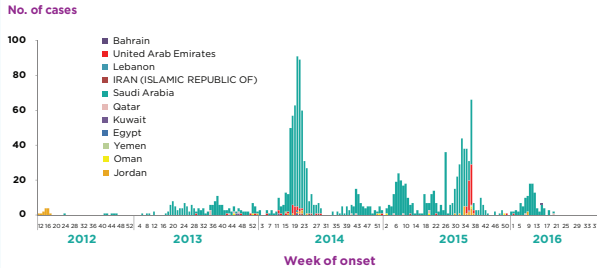
### MERS cases in Saudi Arabia 2012- May 2016



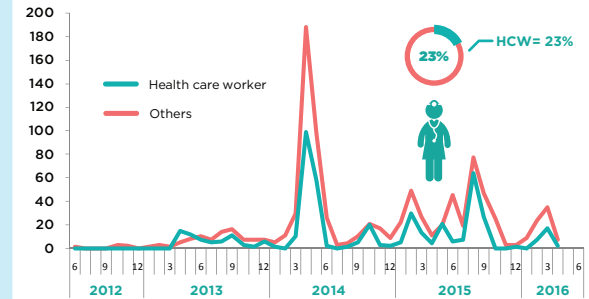
### MERS cases reported from KSA by year, 2012-2016



### MERS Cases reported from the Eastern Mediterranean Region, by week of symptoms onset, 2012- May 2016



### Reported cases of MERS in healthcare workers, April 2012-May 2016



### MERS cases reported from KSA, by week of symptoms onset, 2012- may 2016



### Epidemiological characteristics of MERS cases reported globally between Jan-May in 2013 - 2016

Characteristic	Jan-May 2013	Jan-May 2014	Jan-May 2015	Jan-May 2016
Number	25	344	161	106
Median age in years	58.4	49.6	55.5	52.5
Gender (% male)	80	66	75	78
% of primary cases	24	11	42	56
% of secondary cases	68	39	41	39
(%) unknown contact history	8	12	16	1
% HCW	11	21	32	28
% Fatal	60	32	32	26

### The outcome of reported MERS cases, by year of onset, 2012-2016

Year	2012	2013	2014	2015	2016	Grand Total
Died	6	100	277	268	31	682
Survived	15	82	400	521	76	1094
CFR(%)	29	55	41	34	29	38

### Age and fatality distribution of Primary and Secondary cases of MERS reported from Saudi Arabia, 2012-2016

