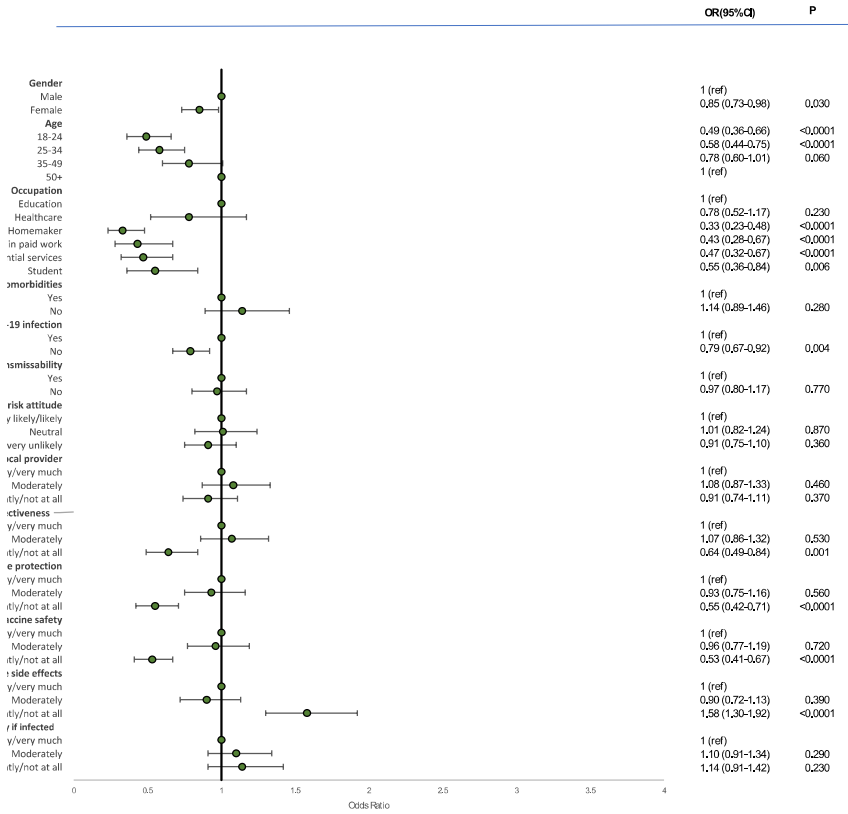


Figure 2 OR, logit model, correlates of vaccination status on pooled data (Rounds 2 and 3) in middle-income countries: vaccinated (A), not vaccinated but willing (B), not vaccinated and undecided (C), not vaccinated and not willing (D). Abbreviations: OR = odds ratio; 95% CI = 95% confidence interval.

Panel A



Panel B

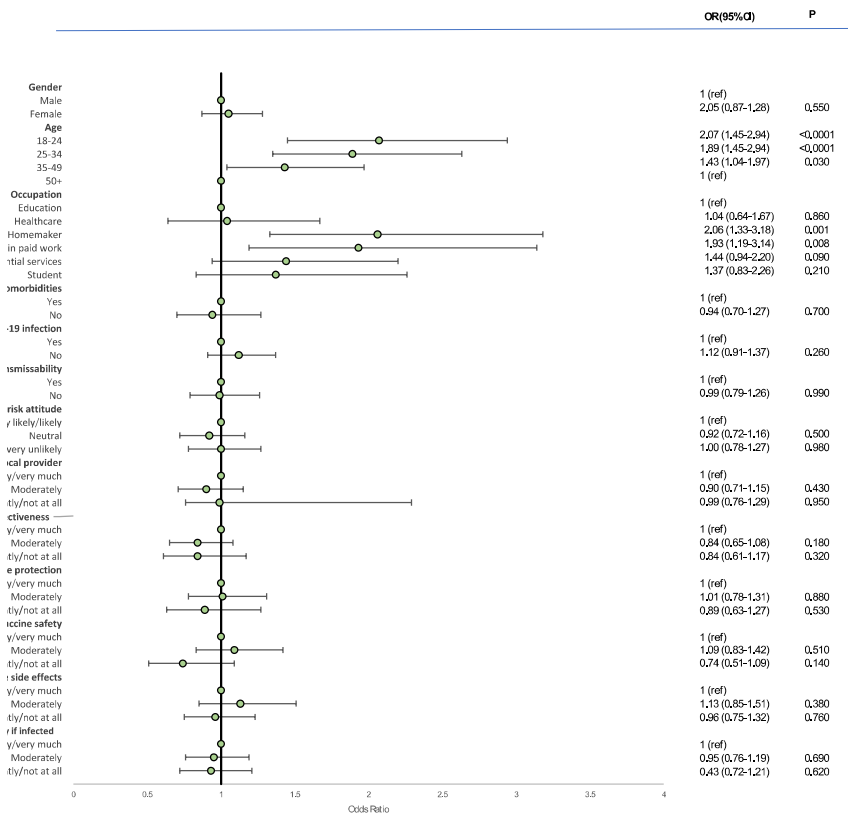
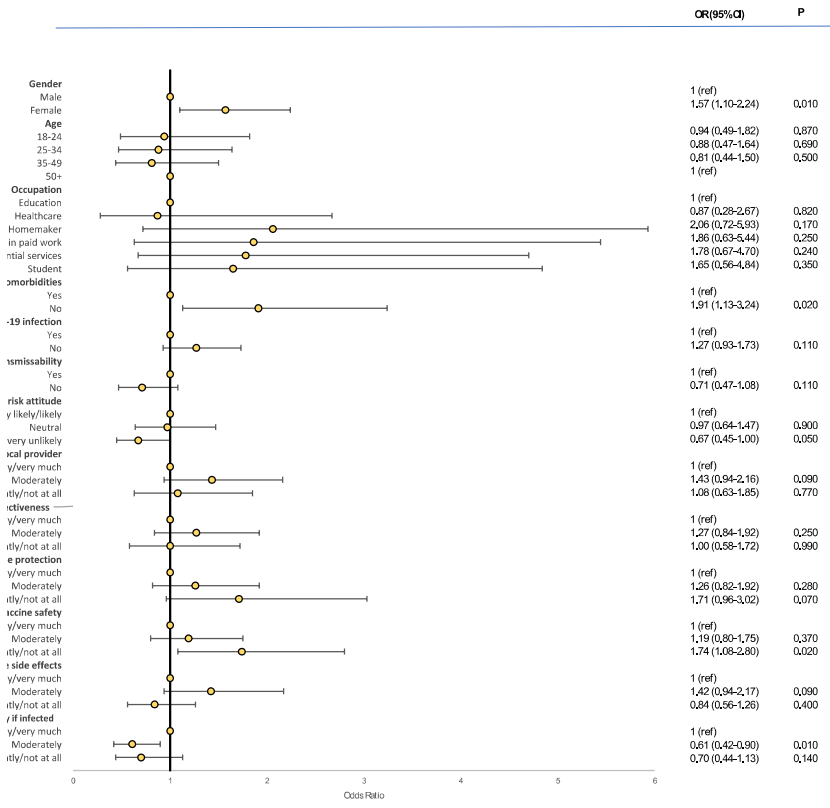


Figure 2 OR, logit model, correlates of vaccination status on pooled data (Rounds 2 and 3) in middle-income countries: vaccinated (A), not vaccinated but willing (B), not vaccinated and undecided (C), not vaccinated and not willing (D). Abbreviations: OR = odds ratio; 95% CI = 95% confidence interval. (concluded)

Panel C



Panel D

