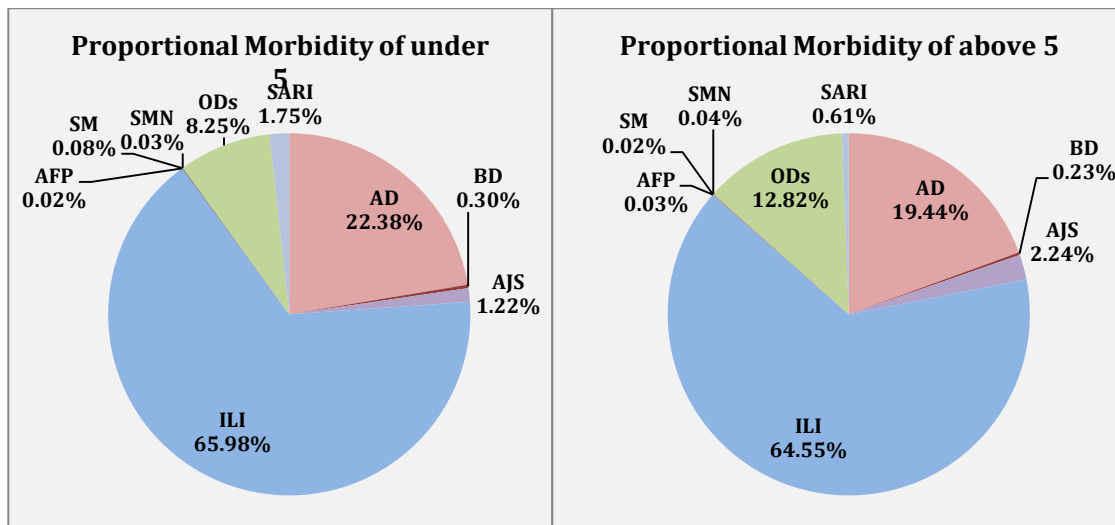


### Highlights:

- ❖ 2 AFP cases were detected in Damascus.
- ❖ **Completeness & Timeliness of Reporting**
- ❖ The overall completeness of reporting was 78%; (868 out of total 1110 EWARS sentinel sites). 14 governorates have reported this week.
- ❖ Timeliness of reporting is 86%.

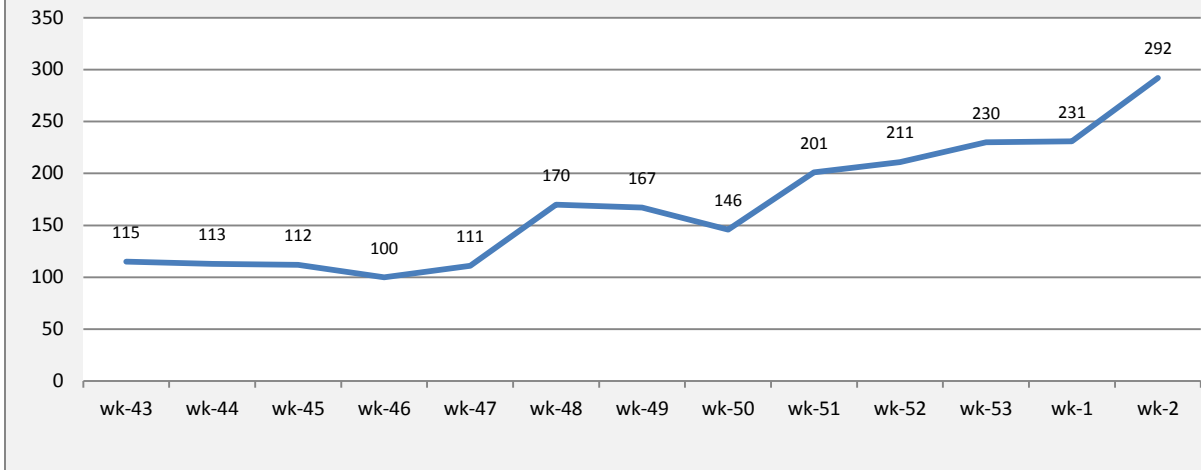
### The Morbidity Cases

- ❖ Out of the 194,715 total consultations, a total of 25,419 EWARS notifiable cases were reported; of which 16,675 cases were Influenza like illness (66%), 5,321 cases were Acute Diarrhoea (20%), 451 cases of AJS, 292 cases of Severe Acute Respiratory Infection, 68 cases of Bloody Diarrhoea, 12 cases of Suspected Measles, 10 cases of Suspected Meningitis, and 2 cases of Acute Flaccid Paralysis.
- ❖ Graphs 1 and 2 below show the proportional morbidity among < 5 and ≥ 5 year age groups respectively.



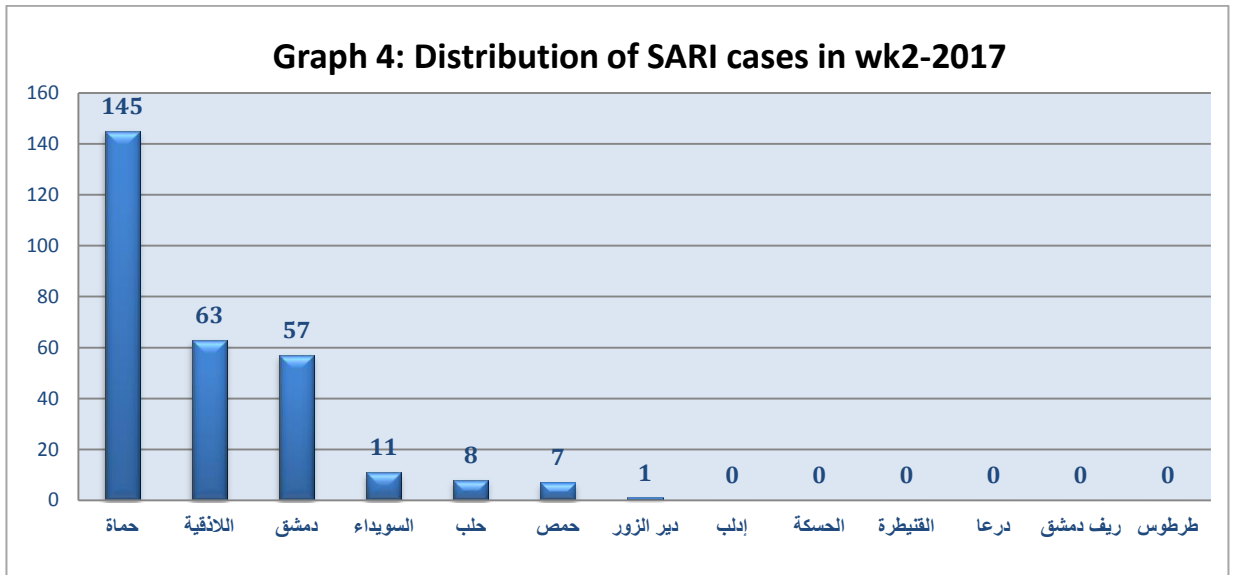
- ❖ AD constitutes (22, 38%) among < 5 and (19.44%) among ≥ 5, while ILI constitutes (65.98%) of the cases among <5 and (64.55%) among ≥ 5.
- ❖ 51% of the cases were distributed among males. 53% of the cases were distributed among ≥ 5 age group.
- ❖ In total 2,588 cases were reported as “other diseases”. The most important diseases reported within this group were; 696 cases of Leishmaniasis (most of which were reported from Idleb 48%, Hamah 24%, and DierEzor 15%), 144 cases of Typhoid (most of which were reported from DierEzor 58%, Idleb 15%, and Rural Damascus 10%), 92 cases of Brucellosis, 18 cases of Pertussis, and 9 cases of TB.
- ❖ Graph 3 shows the trend analysis of Acute Severe Respiratory Infections cases reported between week 43 of 2016 and week 1 of 2017. The graph shows an increase in the reported cases, and the number of cases is still in average. This increase is still in line with seasonality increase of influenza.

**Graph 3: Trend analysis of SARI cases between wk 43 /2016 and wk 2/ 2017**



❖ Graph 4 below shows the distribution of cases per governorates. It shows that the governorates reporting the highest number of cases are (Hama, Lattakia, and Damascus). This might be due to active reporting from referral hospitals located in the mentioned governorates.

**Graph 4: Distribution of SARI cases in wk2-2017**



## ❖ The Response

**Acute flaccid paralysis:** Stool samples were collected from AFP cases and sent to the reference lab in Damascus. Laboratory tests for AFP cases detected in week 1 showed negative results for Polio.

**Severe Acute Respiratory Infection:** During the period from week (47) 2016 till week (2) 2017, total number of (67) samples were collected from SARI cases admitted to ICU and sent to the reference laboratory in Damascus, the results showed negative for H1N1 for all the cases, and 22 positive cases for A/H3.

**Table-1: Distribution of cases per age group, and by Governorate-week-2, 2017:**

Code	age group	Idleb	Hassaka	Raqqqa	Sweida	Qunaitra	Lattakia	Aleppo	Hama	Homs	Daraa	Damascus	DierEzor	Rural Damascus	Tartous	Grand Total
AD	< 5	214	28	0	76	71	309	444	80	107	197	632	280	165	62	2665
	≥ 5	185	3	0	85	83	274	468	76	76	116	738	255	224	73	2656
BD	< 5	0	0	0	1	1	9	0	0	8	2	2	13	0	0	36
	≥ 5	0	0	0	1	2	5	0	0	5	1	7	11	0	0	32
AWD	< 5	0	0	0	0	0	0	0	0	0	0	0	0	0	0	0
	≥ 5	0	0	0	0	0	0	0	0	0	0	0	0	0	0	0
AJS	< 5	36	0	0	1	4	9	46	4	1	4	14	21	5	0	145
	≥ 5	35	0	0	4	3	16	106	33	6	8	52	14	16	13	306
ILI	< 5	28	54	0	316	213	1479	1569	586	158	604	961	742	694	453	7857
	≥ 5	34	24	0	456	596	1565	1512	268	214	597	982	538	1200	832	8818
AFP	< 5	0	0	0	0	0	0	0	0	0	0	2	0	0	0	2
	≥ 5	0	0	0	0	0	0	0	0	0	0	0	0	0	0	0
SM	< 5	0	0	0	0	0	1	0	0	0	0	1	7	0	0	9
	≥ 5	0	0	0	0	0	0	0	0	0	0	2	1	0	0	3
SMN	< 5	0	0	0	2	0	0	0	1	0	0	0	0	1	0	4
	≥ 5	0	0	0	2	0	1	0	0	0	0	3	0	0	0	6
SARI	< 5	0	0	0	0	0	47	0	118	1	0	41	1	0	0	208
	≥ 5	0	0	0	11	0	16	8	27	6	0	16	0	0	0	84
Others	< 5	490	2	0	2	12	9	188	28	30	25	19	59	32	1	897
	≥ 5	481	3	0	46	11	104	392	224	74	47	84	171	52	2	1691
<b>Total Sum of &lt; 5</b>		768	84	0	398	301	1863	2247	817	305	832	1672	1123	897	516	11823
<b>Total Sum of ≥ 5</b>		735	30	0	605	695	1981	2486	628	381	769	1884	990	1492	920	13596
<b>Total</b>		<b>1503</b>	<b>114</b>	<b>0</b>	<b>996</b>	<b>3844</b>	<b>4733</b>	<b>1445</b>	<b>686</b>	<b>1601</b>	<b>3556</b>	<b>2113</b>	<b>2389</b>	<b>1436</b>	<b>25419</b>	<b>25419</b>

- ❖ The table below shows a comparison between reported cases in week 1 & week 2. It shows a slight increase in the number of reported cases. Reporting less cases due to the New Year vacation in week one might be the reason for such an increase, however, the reported increase is still below the alert thresholds set for the mentioned diseases.

**Table 2: comparison between reported cases in 1<sup>st</sup> week and 2<sup>nd</sup> week in 2017**

Disease	1st Week	2nd Week
AD	3343	5321
BD	21	68
AWD	0	0
AJS	431	451
ILI	12657	16675
AFP	1	6
SM	8	12
SMN	5	10
SARI	159	292
TYF	101	144
PER	4	18
LSH	686	696
BRU	51	92
TB	3	9
SCA	545	649
LIC	737	821
CHP	191	304
Others	85	159