

Lebanon Draft Primary Health Care Vital Signs Profile



\$ FINANCING

Lebanon NHA (2017)⁶

PHC spending:



Prioritization of PHC:

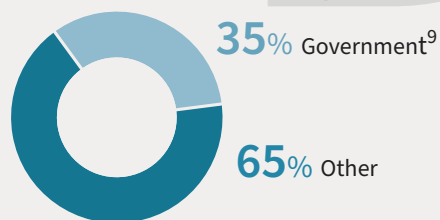
Overall health spending⁷

33% on PHC

Government health spending⁸

26% on PHC

Sources of PHC spending:



CAPACITY

Primary Health Care Progression Model¹⁰

Governance



Inputs



Population Health & Facility Management

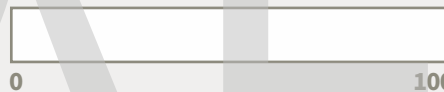


PERFORMANCE

Access Index¹¹

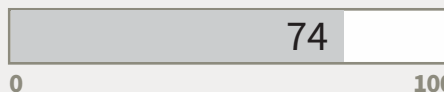


Quality Index



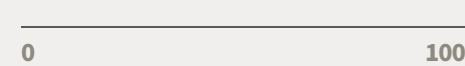
Service Coverage Index

Regional Core Indicators Booklet (2020), UHC Global Monitoring Report (2019), WHO TB Programme (2019)



EQUITY

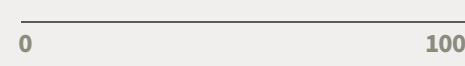
Access: % with perceived barriers due to cost, by wealth quintile



Coverage of RMNCH services, by mother's education



Outcomes: Under-five mortality, by residence



COUNTRY CONTEXT AT-A-GLANCE

GDP per capita

(PPP int'l dollars)
WDI (2020)

\$12,289

Living in poverty

(Under \$1.90 int'l dollars / day)

N/A

Government health spending as % of GDP¹

WHO GHED (2018)

4%

Life expectancy at birth

(Years) Regional core indicators booklet (2020)

79

Maternal mortality²

(Per 100,000 live births)

Neonatal mortality³

(Per 100,000 live births)

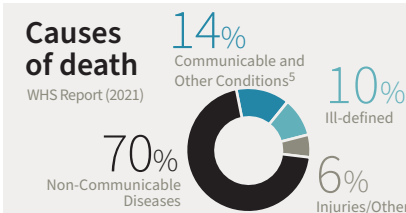
Premature NCD mortality⁴

(Probability)
Regional core indicators booklet (2020)

18%

Causes of death

WHS Report (2021)



Note: Indicator values presented here may differ from country data sources due to the use of standardized categories and methods to enhance international comparability. See Indicator Description Sheet for details.

Note: Scores for the Capacity, Performance, and Equity domains are color-coded to reflect good (green), medium (yellow), and poor (red) performance, where comparable data are available. Cut-offs can be found in the Indicator Description Sheet. Scores based on data from non-comparable sources are colored gray. Finance indicators are not color-coded because these indicators lack common targets.

1. Domestic general government health expenditure as % of gross domestic product—Government health spending as percentage of GDP: 4% National Health Accounts 2017

2. Maternal mortality: This value is suppressed as global estimates differ from country estimates and the country does not approve the global estimate

3. Newborn mortality: This value is suppressed as global estimates differ from country estimates and the country does not approve the global estimate

4. Probability of dying between ages 30 and 70 from cardiovascular diseases, cancer, diabetes, or chronic respiratory disease

5. Communicable, maternal, perinatal and nutritional conditions

6. These estimates apply to Lebanese citizens only.

7. Current PHC expenditure as % of Current Health Expenditure (CHE)

8. Domestic general government PHC expenditure as % of domestic general government health expenditure. 4% National Health Accounts (2017)

9. Domestic general government PHC expenditure as % of current PHC expenditure

10. The PHC Progression Model uses mixed methods to assess foundational capacities of PHC on a scale from 1 (low) to 4 (high)

11. Because different data/indicators are used in each country, composite index values may not be comparable across countries.

See page 2 for the specific indicators used in this VSP.

Last updated 11/2022

Lebanon	SCORE	PERCENTAGE	SOURCE	YEAR
ACCESS				
Financial				
No recent indicator available from international or national data sources				
Geographic				
No recent indicator available from international or national data sources				
QUALITY				
Comprehensiveness				
Avg. availability of 5 tracer RMNCH services		100%	PHC Department, MOH	2019
Continuity				
DTP3 dropout rate*		2%	WHO Vaccination Programme	2019
Treatment success rate for new TB cases		81%	Regional Core Indicators Booklet	2020
Person-Centeredness				
No recent indicator available from international or national data sources				
Provider availability				
No recent indicator available from international or national data sources				
Safety				
Adequate infection control		100%	PHC Department, MOH	2019
SERVICE COVERAGE				
74				
Reproductive, Maternal, Newborn and Child Health				
Demand for family planning satisfied with modern methods		60%	Regional Core Indicators Booklet	2020
Antenatal care coverage (4+ visits)		90%	Regional Core Indicators Booklet	2020
Coverage of DTP3 immunization		93%	Regional Core Indicators Booklet	2020
Care-seeking for suspected child pneumonia		74%	UHC Global Monitoring Report	2019
Infectious diseases				
Tuberculosis cases detected and treated with success		87%	WHO TB Programme	2019
People living with HIV receiving anti-retroviral treatment		67%	Regional Core Indicators Booklet	2020
Children under 5 with diarrhea receiving ORS		100%	Regional Core Indicators Booklet	2020
Non-Communicable Diseases (NCDs)				
% of population with normal blood pressure***		79%	Regional Core Indicators Booklet	2020

*Indicators where lower values are preferable were transformed before inclusion in the index. The modified indicator was defined as 100-X, where X is the original percentage shown in this table.
 Country-specific (proxy) indicator, used in absence of globally comparable survey data. *Percentage of adult population with normal blood pressure is based on age-standardized estimates. These distributions are rescaled to provide finer resolution before inclusion in the index. Rescaled indicator = (X-50) / (100-50) * 100, where X is the prevalence of normal blood pressure. For more details see Tracking UHC: 2017 Global Monitoring Report. Note: Summary scores for the domains of Access, Quality, and Coverage are calculated by taking the average of indicator values within each subdomain, and then taking the average across subdomain scores.