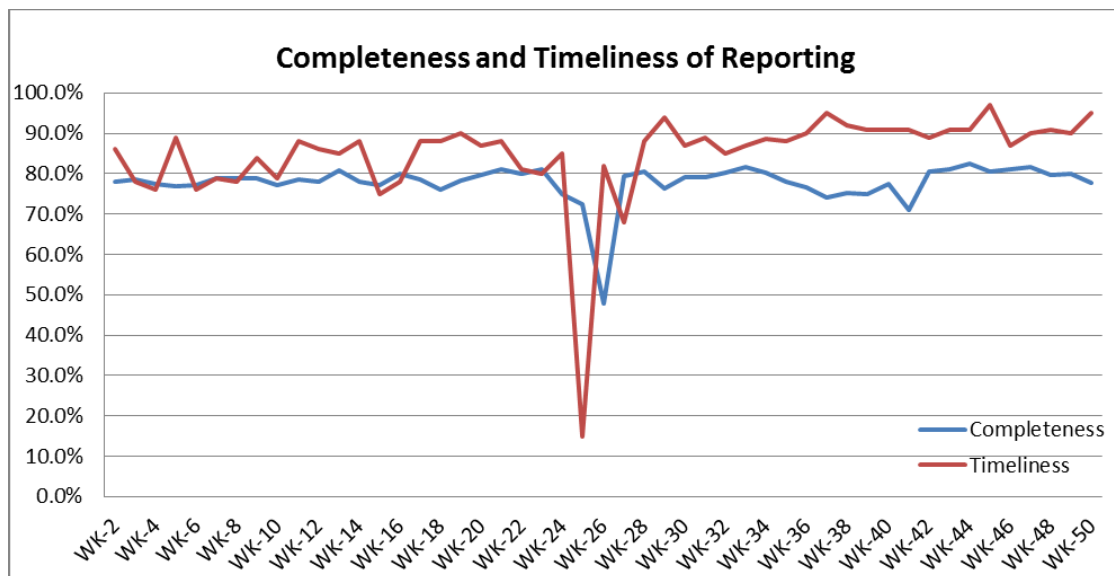


❖ Highlights:

- ❖ During this week 2 AFP cases were reported one from Damascus and one from Lattakia.
- ❖ (14) Suspected Measles cases were reported during this week; mostly from Al-Hassakeh 7 cases, from Lattakia 2 cases, and from Rural-Damascus 2 cases.
- ❖ An increase of AJS in Homs since October accumulated reported cases from Homs first health area reached 233 AJS cases.

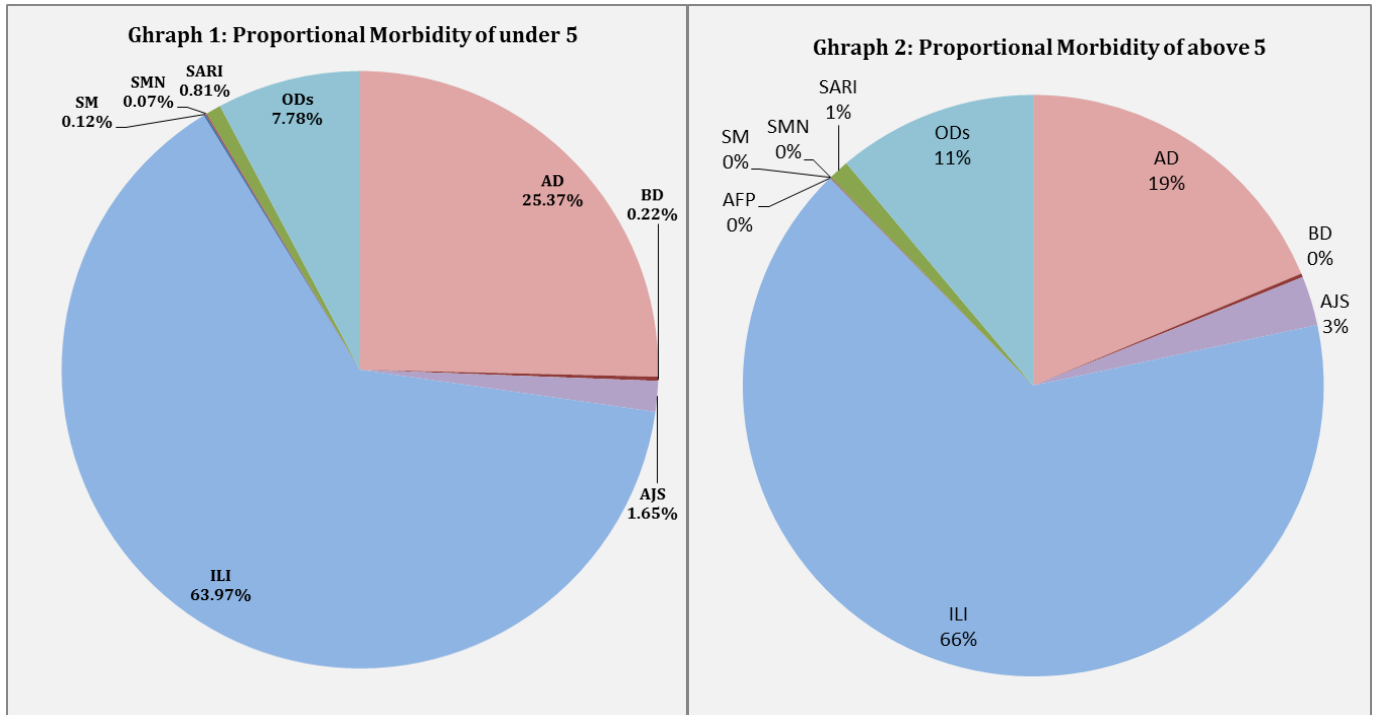
❖ Completeness & Timeliness of Reporting

- ❖ The overall completeness of reporting was 78%; (903 out of total 1163 EWARS sentinel sites). (14) Governorates have reported this week. Timeliness of reporting was 95%.

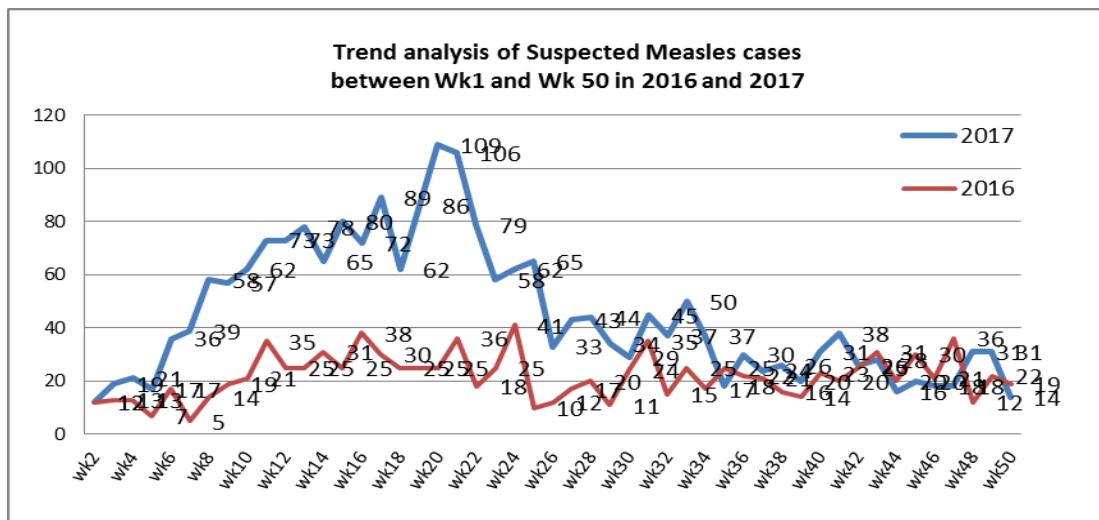


❖ The Morbidity Cases

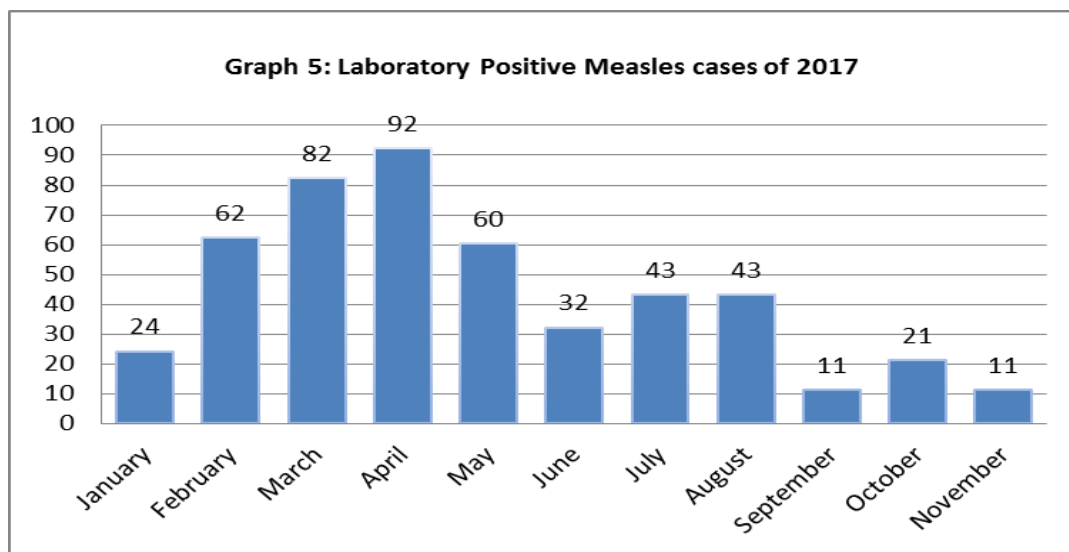
- ❖ Out of the 205,982 total consultations, a total of 21,436 EWARS notifiable cases were reported; of which 4,838 cases were Acute Diarrhoea (23%), 13,129 cases were Influenza like Illness (61%), 460 cases of AJS, 210 cases of Sever Acute Respiratory Infection, 55 cases of Bloody Diarrhoea, 31 cases of Suspected Measles, 27 cases of Suspected Meningitis, and 3 AFP cases.
- ❖ Graphs 1 and 2 below show the proportional morbidity among < 5 and ≥ 5 year age groups respectively.



- ❖ AD constitutes (25.37%) among < 5 and (19%) among ≥ 5, while ILI constitutes (63.97%) of the cases among <5 and (66%) among ≥ 5.
- ❖ 51% of the cases were distributed among males. 58% of the cases were distributed among ≥5 age group.
- ❖ In total 1,982 cases were reported as “other diseases”. The most important diseases reported within this group were; 472 cases of Leishmaniasis, 120 cases of Typhoid, 56 cases of Brucellosis, 13 cases of Pertussis, 15 cases of Mumps, 616 cases of lice, and 10 cases of TB.
- ❖ **Graph 4** shows the trend analysis of suspected Measles cases reported between week 1 and week 50 of 2016 and 2017.



❖ **Graph 5** shows the number of laboratory confirmed Measles cases reported till November 2017. It shows that the peak of measles cases was in April.



❖ **Graph 6:** Shows the distribution of Suspected Measles per governorate in week 50.

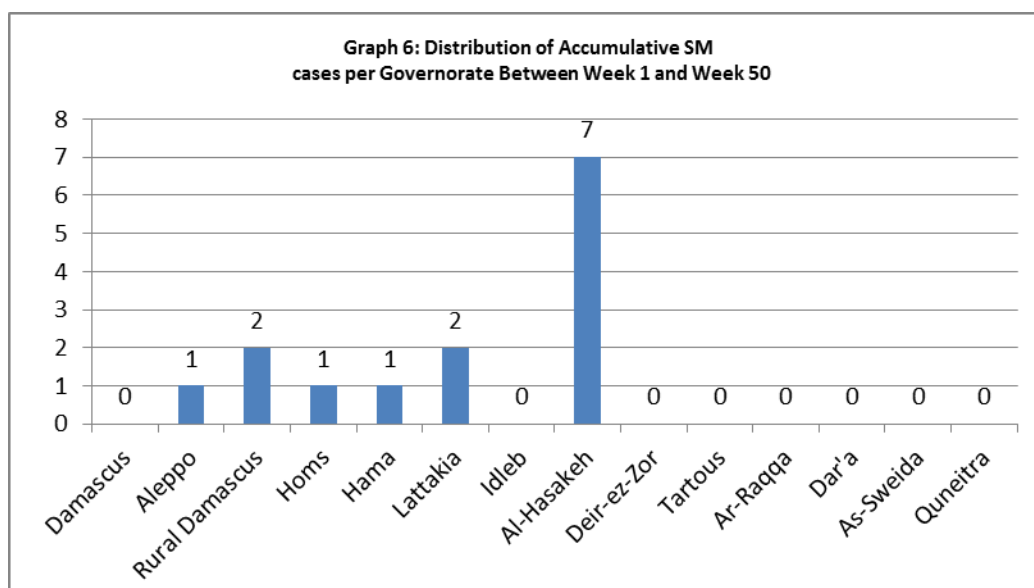


Table 1 shows a comparison between all notifiable cases in week 49 & week 50 in 2017.

Disease	Week 49	Week 50
AD	4,838	4,375
BD	55	43
AWD	0	0
AJS	460	466
ILI	13,129	13,268
AFP	3	2
SM	31	14
SMN	27	11
SARI	210	204
TYF	106	120
PER	19	13
LSH	634	472
BRU	66	56
TB	6	10
SCA	380	261
LIC	529	326
CHP	782	611
Others	146	98
Mum	15	15

❖ Disease surveillance & Response

❖ **cVDPV2 outbreak response:**

Regional team on polio is conducting a special field mission to Syria from 10-14/12/2017 to support the establishment of the polio Environmental Surveillance laboratory.

A committee of the Ministry of Health, Ministry of Water Resources and WHO has been developed for the expansion of environmental surveillance in Syria. Staffs have been trained and the first specimen has been collected and will be tested for poliovirus this week.

- ❖ As a response to Hepatitis A cases in the northern area of Homs; and with coordination with MoH and SARC the following measures have been conducted critical cases were referred to the hospital and have recovered. distribution of 300 tablets of water purification tablets, sessions were conducted and brochures were distributed for raising health awareness and hygiene practice of the residents.

Table-2: Distribution of cases per age group, and by Governorate-week- 50, 2017:

Code	Age Group	Idleb	Hassaka	Raqqqa	Sweida	Qunaitra	Lattakia	Aleppo	Hama	Homs	Daraa	Damascus	Dier-ez-Zor	Rural Damascus	Tartous	Grand Total	
AD	< 5	197	69	181	87	42	212	281	193	79	150	357	47	183	75	2153	4,375
	≥ 5	158	32	62	85	74	329	272	133	76	116	429	49	228	179	2222	
BD	< 5	0	0	1	5	0	6	0	1	0	3	2	1	0	0	19	43
	≥ 5	0	3	0	3	0	12	0	0	0	3	0	0	0	3	24	
AWD	< 5	0	0	0	0	0	0	0	0	0	0	0	0	0	0	0	0
	≥ 5	0	0	0	0	0	0	0	0	0	0	0	0	0	0	0	
AJS	< 5	8	3	33	1	0	10	40	11	5	11	9	6	3	0	140	466
	≥ 5	25	5	12	4	3	41	100	49	8	21	35	5	11	7	326	
ILI	< 5	70	86	0	248	371	1243	918	197	212	316	486	252	605	424	5428	13,268
	≥ 5	67	65	0	397	823	1495	973	120	291	553	809	230	1096	921	7840	
AFP	< 5	0	0	0	0	0	0	0	0	0	0	0	0	0	0	0	2
	≥ 5	0	0	0	0	0	0	0	0	0	0	1	0	0	1	2	
SM	< 5	0	6	0	0	0	1	1	0	1	0	0	0	1	0	10	14
	≥ 5	0	1	0	0	0	1	0	1	0	0	0	0	1	0	4	
SMN	< 5	0	0	1	0	0	2	0	0	1	1	1	0	0	0	6	11
	≥ 5	0	0	0	2	0	0	0	2	0	0	1	0	0	0	5	
SARI	< 5	0	0	0	2	0	0	0	49	0	0	12	0	0	6	69	204
	≥ 5	0	0	0	14	0	12	0	50	0	0	57	0	0	2	135	
Other	< 5	265	4	27	9	15	14	124	45	49	25	14	32	16	21	660	1,982
	≥ 5	325	8	12	15	16	47	324	183	97	48	51	81	61	54	1322	
Total Sum of < 5		540	168	243	352	428	1488	1364	496	347	506	881	338	808	526	8485	20,365
Total Sum of ≥ 5		575	114	86	520	916	1937	1669	538	472	741	1383	365	1397	1167	11880	