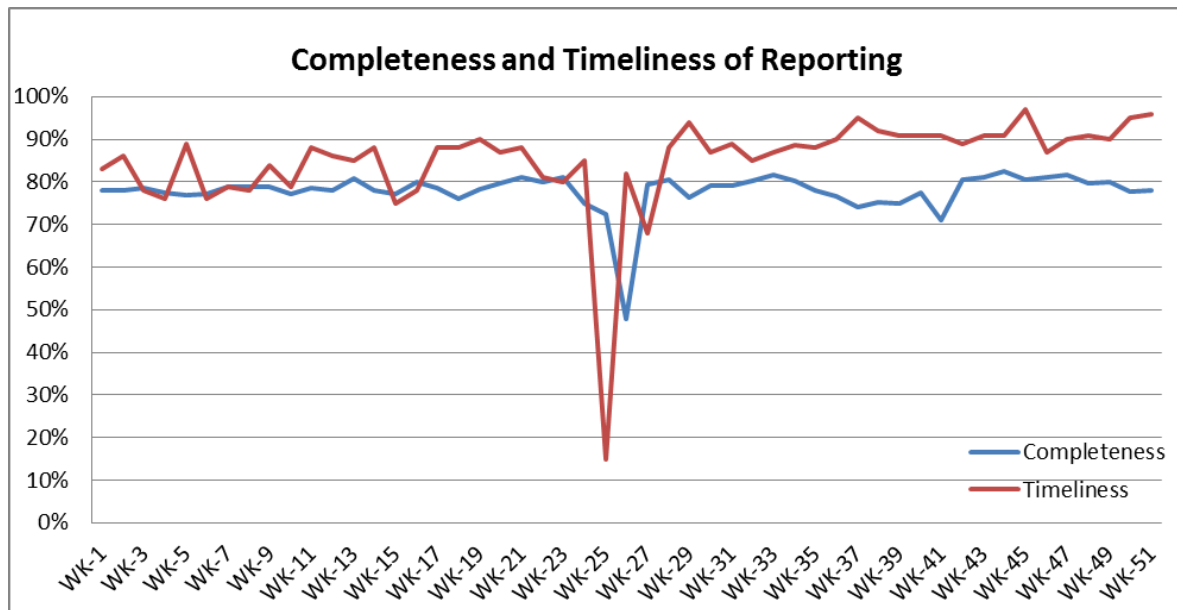


#### ❖ Highlights:

- ❖ During this week 5 AFP cases were reported 2 cases from Al-Hassakeh, one case from Hama, one case from Damascus, and one case from Rural Damascus.
- ❖ (38) Suspected Measles cases were reported during this week; mostly from Al-Hassakeh 27 cases, from Damascus 3 cases, Aleppo 2 cases, and from Dar'a 2 cases.

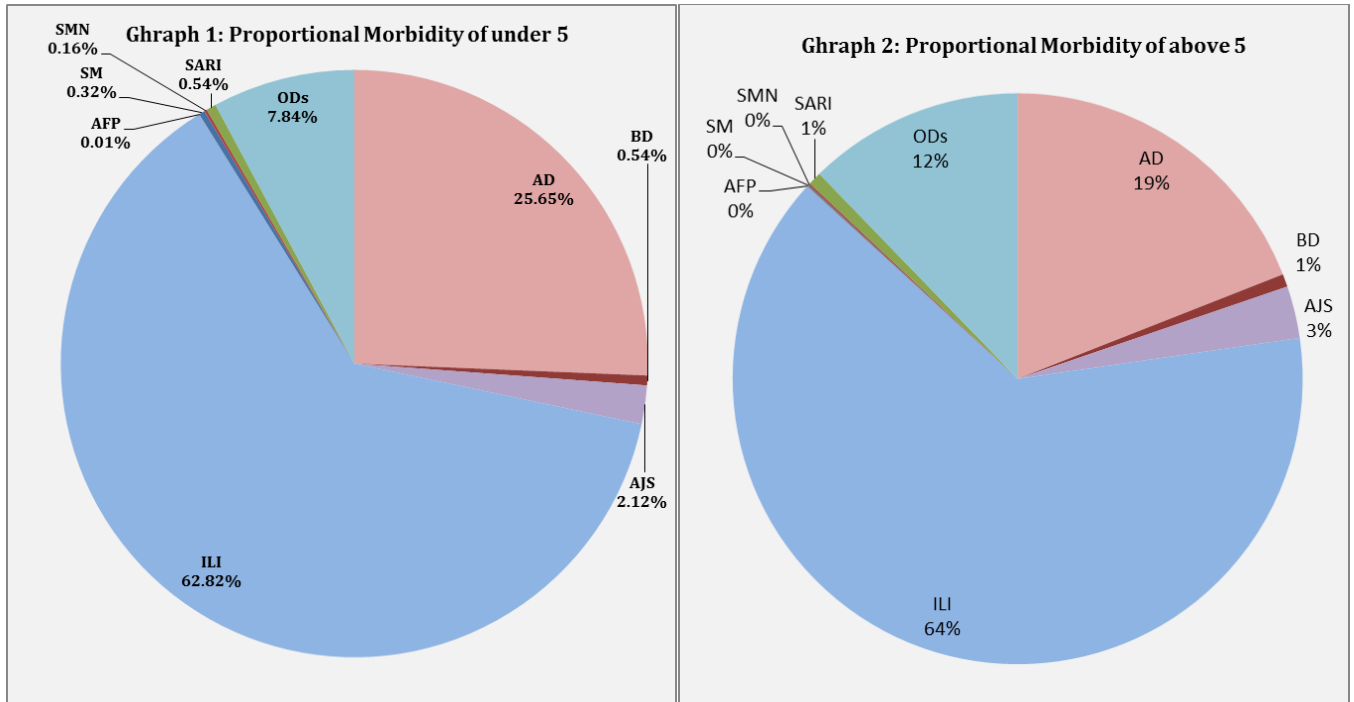
#### ❖ Completeness & Timeliness of Reporting

- ❖ The overall completeness of reporting was 78%; (897 out of total 1163 EWARS sentinel sites). (14) Governorates have reported this week. Timeliness of reporting was 96%.

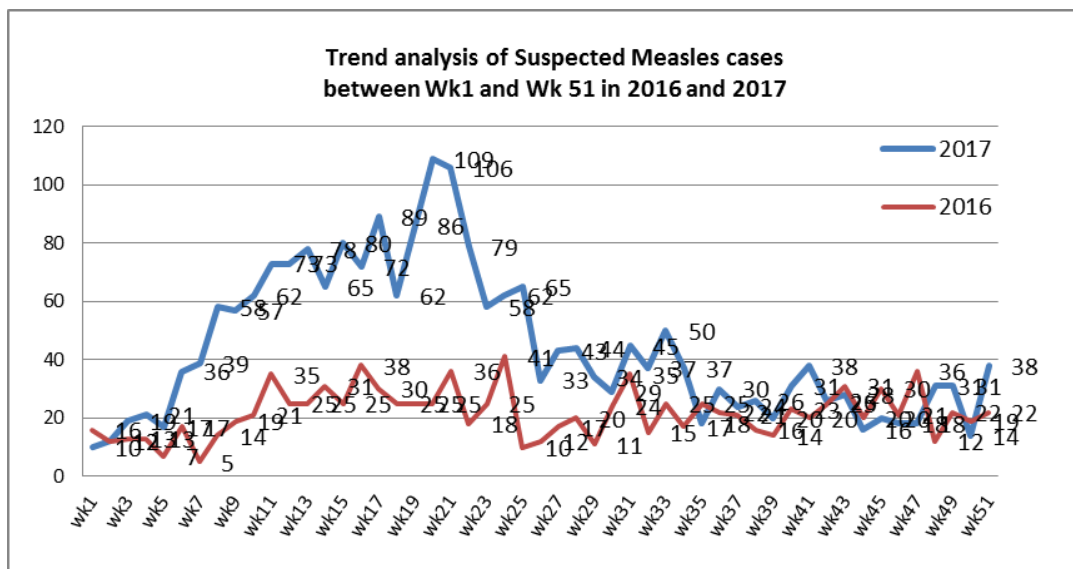


#### ❖ The Morbidity Cases

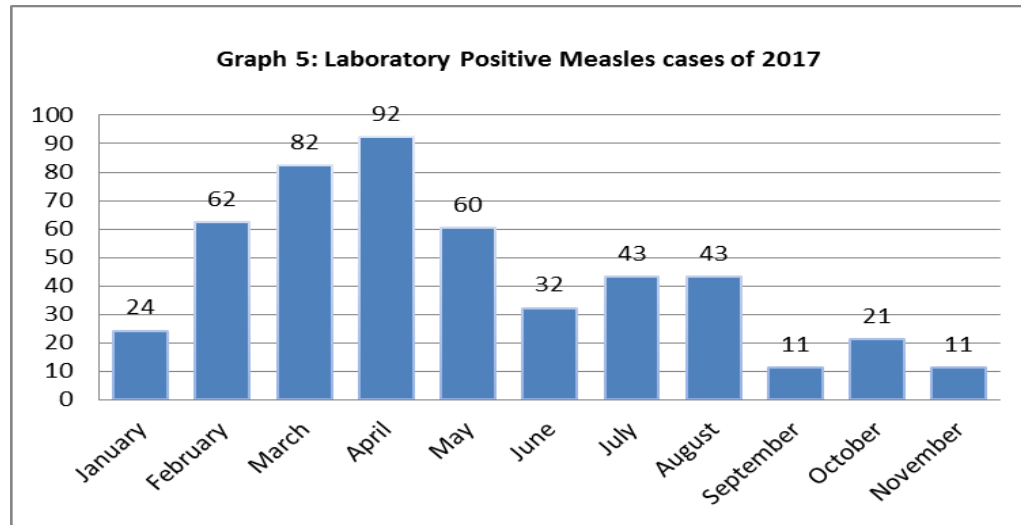
- ❖ Out of the 200,699 total consultations, a total of 21, 249 EWARS notifiable cases were reported; of which 4,651 cases were Acute Diarrhoea (22%), 13,498 cases were Influenza like Illness (64%), 551 cases of AJS, 140 cases of Sever Acute Respiratory Infection, 137 cases of Bloody Diarrhoea, 38 cases of Suspected Measles, 29 cases of Suspected Meningitis, and 5 AFP cases.
- ❖ Graphs 1 and 2 below show the proportional morbidity among < 5 and ≥ 5 year age groups respectively.



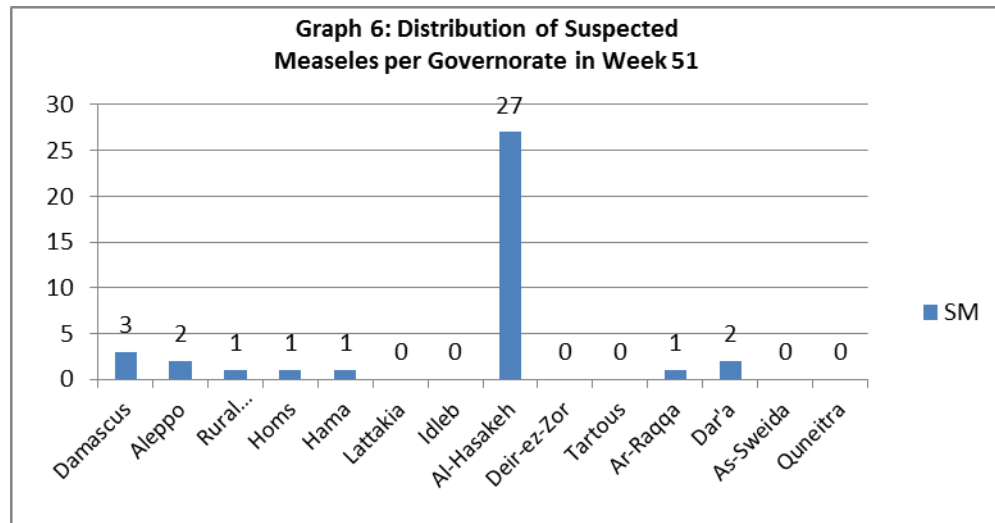
- ❖ AD constitutes (25.65%) among < 5 and (19%) among ≥ 5, while ILI constitutes (62.82%) of the cases among <5 and (64%) among ≥ 5.
- ❖ 51% of the cases were distributed among males. 57% of the cases were distributed among ≥5 age group.
- ❖ In total 2,200 cases were reported as “other diseases”. The most important diseases reported within this group were; 574 cases of Leishmaniasis, 115 cases of Typhoid, 68 cases of Brucellosis, 13 cases of Pertussis, 8 cases of Mumps, 709 cases of lice, and 3 cases of TB.
- ❖ **Graph 4** shows the trend analysis of suspected Measles cases reported between week 1 and week 51 of 2016 and 2017.



❖ **Graph 5** shows the number of laboratory confirmed Measles cases reported till November 2017. It shows that the peak of measles cases was in April.



❖ **Graph 6:** Shows the distribution of Suspected Measles per governorate in week 51.



**Table 1** shows a comparison between all notifiable cases in week 50 & week 51 in 2017.

Disease	Week 50	Week 51
AD	4,375	4,651
BD	43	137
AWD	0	0
AJS	466	551
ILI	13,268	13,498
AFP	2	5
SM	14	38
SMN	11	29
SARI	204	140
TYF	120	115
PER	13	13
LSH	472	574
BRU	56	68
TB	10	3
SCA	261	255
LIC	326	363
CHP	611	709
Others	98	92
Mum	15	8

## ❖ Disease surveillance & Response

### ❖ **cVDPV2 outbreak response:**

The national vaccination program staffs work together with outbreak response teams to prepare for upcoming vaccination campaign with mOPV2 in Deir-ez-Zor, Ar-Raqqa, Al-Hassakeh during the period 14-19-January-2018. Teams are revising and updating micro plans to ensure population movements are accounted for and newly accessible areas are included. There has also been mapping of roads for transporting vaccines and centers for vaccine distribution.

A national field assessment of cold chain capacity is taking place this week in all accessible health facilities. MoH staffs have been trained on assessment methodology with the support of UNICEF consultants.

**Table-2: Distribution of cases per age group, and by Governorate-week- 51, 2017:**

Code	Age Group	Idleb	Hassaka	Raqqqa	Sweida	Qunaitra	Lattakia	Aleppo	Hama	Homs	Daraa	Damascus	DierEzor	Rural Damascus	Tartous	Grand Total
AD	< 5	267	47	235	69	36	251	278	206	107	177	283	49	262	81	2348
	≥ 5	209	43	56	79	52	372	285	149	52	127	427	45	253	154	2303
BD	< 5	0	28	8	3	0	1	0	0	0	4	2	3	0	0	49
	≥ 5	66	10	2	3	0	4	0	0	0	1	1	0	0	1	88
AWD	< 5	0	0	0	0	0	0	0	0	0	0	0	0	0	0	0
	≥ 5	0	0	0	0	0	0	0	0	0	0	0	0	0	0	0
AJS	< 5	11	21	71	1	0	10	29	12	7	9	9	7	6	1	194
	≥ 5	10	20	29	1	2	32	110	62	14	15	36	5	13	8	357
ILI	< 5	140	131	22	184	342	1336	996	261	257	229	456	228	701	468	5751
	≥ 5	124	54	15	354	839	1543	904	210	306	470	727	222	1104	875	7747
AFP	< 5	0	1	0	0	0	0	0	0	0	0	0	0	0	0	1
	≥ 5	0	1	0	0	0	0	0	1	0	0	1	0	1	0	4
SM	< 5	0	19	1	0	0	0	2	1	1	2	2	0	1	0	29
	≥ 5	0	8	0	0	0	0	0	0	0	0	1	0	0	0	9
SMN	< 5	0	0	7	1	0	2	0	4	0	0	1	0	0	0	15
	≥ 5	0	4	3	0	0	0	0	1	0	1	3	0	2	0	14
SARI	< 5	0	0	0	2	0	6	0	26	0	0	12	0	0	3	49
	≥ 5	0	2	0	7	0	22	0	15	1	0	36	0	0	8	91
Other	< 5	282	5	35	13	5	30	103	38	59	22	17	30	42	37	718
	≥ 5	367	10	17	17	15	105	260	188	129	50	45	79	117	83	1482
<b>Total Sum of &lt; 5</b>		700	252	379	273	383	1636	1408	548	431	443	782	317	1012	590	9154
<b>Total Sum of ≥ 5</b>		776	152	122	461	908	2078	1559	626	502	664	1277	351	1490	1129	12095
<b>Total</b>		<b>1476</b>	<b>404</b>	<b>501</b>	<b>734</b>	<b>1291</b>	<b>3714</b>	<b>2967</b>	<b>1174</b>	<b>933</b>	<b>1107</b>	<b>2059</b>	<b>668</b>	<b>2502</b>	<b>1719</b>	<b>21,249</b>