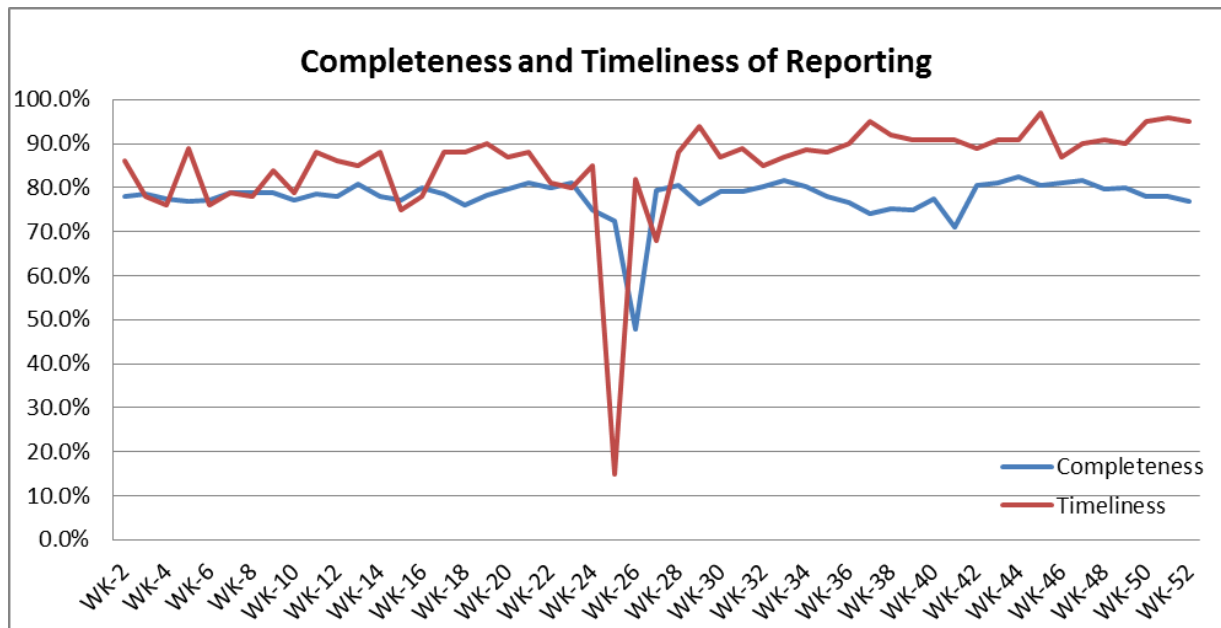


❖ Highlights:

- ❖ During this week (24) Suspected Measles cases were reported; mostly from Al-Hassakeh 10 cases, from Al-Raqqa 9 cases, and from Aleppo 3 cases.

❖ Completeness & Timeliness of Reporting

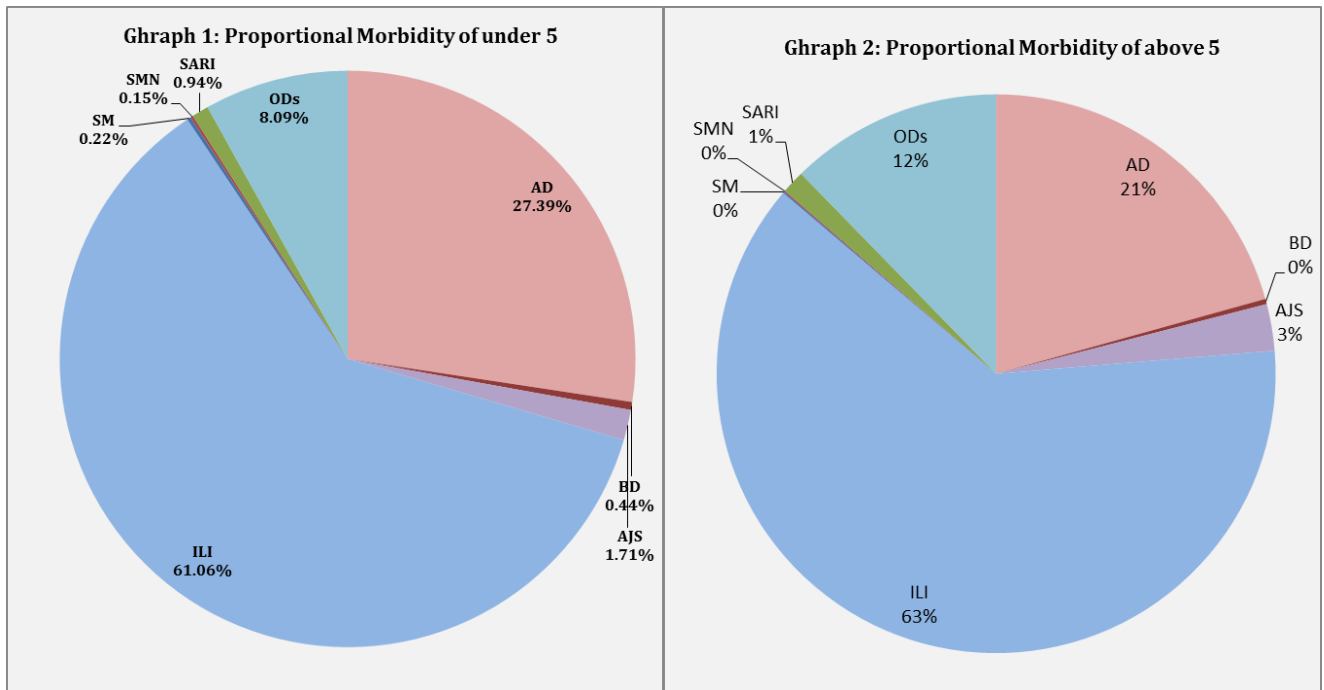
- ❖ The overall completeness of reporting was 77%; (838 out of total 1163 EWARS sentinel sites). (14) Governorates have reported this week. Timeliness of reporting was 95%.



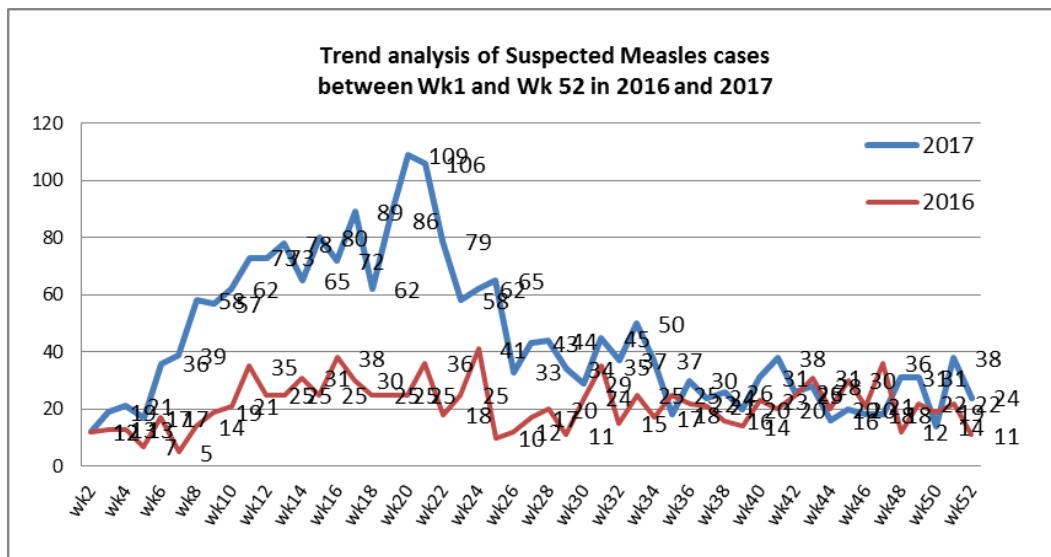
❖ The Morbidity Cases

- ❖ Out of the 155,342 total consultations, a total of 16,929 EWARS notifiable cases were reported; of which 4,000 cases were Acute Diarrhoea (24%), 10,476 cases were Influenza like Illness (62%), 383 cases of AJS, 197 cases of Severe Acute Respiratory Infection, 62 cases of Bloody Diarrhoea, 24 cases of Suspected Measles, and 18 cases of Suspected Meningitis.

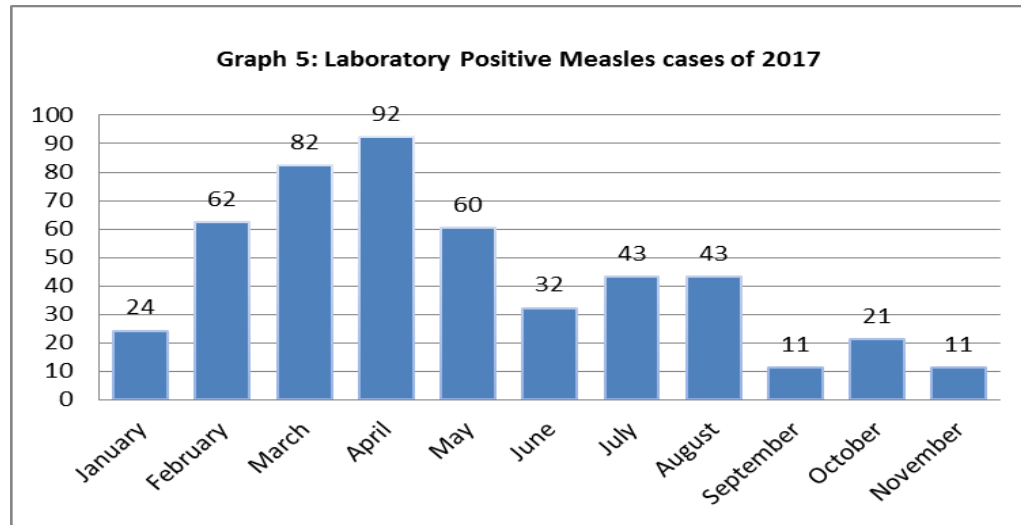
❖ Graphs 1 and 2 below show the proportional morbidity among < 5 and ≥ 5 year age groups respectively.



- ❖ AD constitutes (27.39%) among < 5 and (21%) among ≥ 5, while ILI constitutes (61.06%) of the cases among <5 and (63%) among ≥ 5.
- ❖ 52% of the cases were distributed among males. 56% of the cases were distributed among ≥5 age group.
- ❖ In total 1,769 cases were reported as “other diseases”. The most important diseases reported within this group were; 484 cases of Leishmaniasis, 96 cases of Typhoid, 72 cases of Brucellosis, 20 cases of Pertussis, 12 cases of Mumps, 501 cases of lice, and 2 cases of TB.
- ❖ **Graph 4** shows the trend analysis of suspected Measles cases reported between week 1 and week 52 of 2016 and 2017.



❖ **Graph 5** shows the number of laboratory confirmed Measles cases reported till November 2017. It shows that the peak of measles cases was in April.



❖ **Graph 6:** Shows the distribution of Suspected Measles per governorate in week 52.

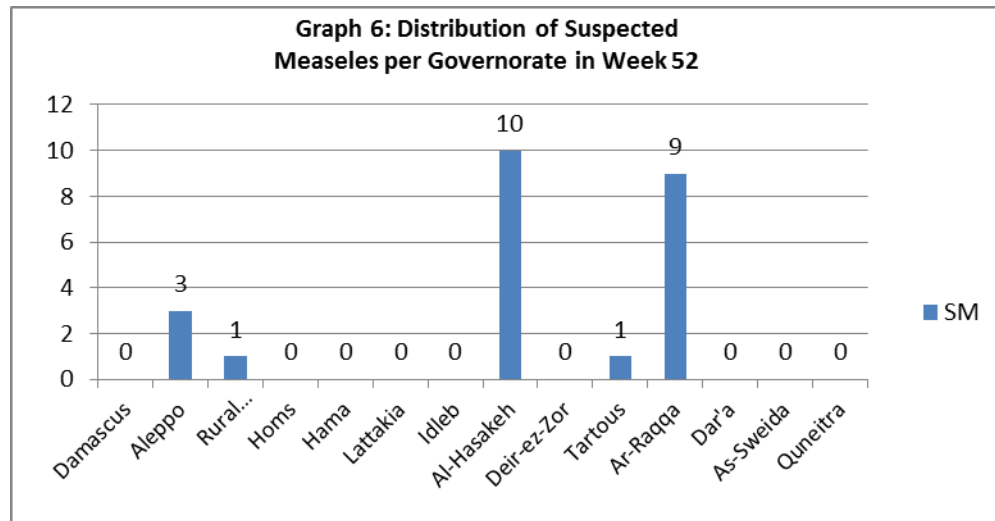


Table 1 shows a comparison between all notifiable cases in week 50 & week 51 in 2017.

Disease	Week 51	Week 52
AD	4,651	4,000
BD	137	62
AWD	0	0
AJS	551	383
ILI	13,498	10,476
AFP	5	0
SM	38	24
SMN	29	18
SARI	140	197
TYF	115	96
PER	13	20
LSH	574	484
BRU	68	72
TB	3	2
SCA	255	197
LIC	363	239
CHP	709	501
Others	92	146
Mum	8	12

❖ Disease surveillance & Response

❖ cVDPV2 outbreak response:

Planning continues for the second phase of the outbreak response. The national vaccination program staffs work together with outbreak response teams to prepare for upcoming vaccination campaign with mOPV2 in Deir-ez-Zor, Ar-Raqqa, Al-Hassakeh during the period 14-19-January-2018. WHO polio adviser will visit the targeted governorates to assure the quality of campaign.

❖ WHO responded to the notification about Measles cases detected in Al-Roj camp in Al-Malikia district in Hassaka governorate , WHO coordinated with MoH and informed DoH about this alert, the rapid response team of Al-Malikia district conducted the following response measures:

- On 25 December blood samples were collected from 7 suspected cases, and investigation forms were filled for all cases, samples were sent to the reference lab in Damascus for Laboratory confirmation.
- On 27 December DoH team conducted vaccination session in the camp: 36 children under one year old and 328 children between 1 and 12 years old were vaccinated with Measles vaccine
Vitamin A was provided to all suspected cases and children under 12 years old.

Table-2: Distribution of cases per age group, and by Governorate-week- 52, 2017:

Code	Age Group	Idleb	Hassaka	Raqqa	Sweida	Qunaitra	Lattakia	Aleppo	Hama	Homs	Daraa	Damascus	DierEzor	Rural Damascus	Tartous	Grand Total
AD	< 5	222	50	197	84	27	194	233	174	81	172	319	47	181	54	2035
	≥ 5	209	57	54	65	46	314	240	118	61	102	330	58	202	109	1965
BD	< 5	0	10	2	4	0	2	0	0	0	7	2	6	0	0	33
	≥ 5	0	11	4	1	0	6	0	0	0	1	6	0	0	0	29
AWD	< 5	0	0	0	0	0	0	0	0	0	0	0	0	0	0	0
	≥ 5	0	0	0	0	0	0	0	0	0	0	0	0	0	0	0
AJS	< 5	7	9	38	1	0	3	28	12	6	5	7	7	4	0	127
	≥ 5	12	17	31	1	0	31	68	24	7	13	18	12	17	5	256
ILI	< 5	76	103	3	192	182	943	911	202	194	279	407	240	476	328	4536
	≥ 5	78	109	1	288	264	1185	764	188	260	443	660	235	842	623	5940
AFP	< 5	0	0	0	0	0	0	0	0	0	0	0	0	0	0	0
	≥ 5	0	0	0	0	0	0	0	0	0	0	0	0	0	0	0
SM	< 5	0	6	9	0	0	0	1	0	0	0	0	0	0	0	16
	≥ 5	0	4	0	0	0	0	2	0	0	0	0	0	1	1	8
SMN	< 5	0	0	4	0	0	1	0	2	1	3	0	0	0	0	11
	≥ 5	1	0	2	0	0	0	0	1	0	0	3	0	0	0	7
SARI	< 5	0	0	13	4	0	0	0	34	0	0	13	0	0	6	70
	≥ 5	0	4	13	13	0	11	3	32	1	0	45	0	0	5	127
Other	< 5	246	29	70	7	1	8	72	22	47	20	21	26	17	15	601
	≥ 5	301	63	44	15	6	62	206	118	108	29	34	75	72	35	1168
Total Sum of < 5		551	207	336	292	210	1151	1245	446	329	486	769	326	678	403	7429
Total Sum of ≥ 5		601	265	149	383	316	1609	1283	481	437	588	1096	380	1134	778	9500