

As part of the strategic preparedness and response plan for COVID-19, and in coordination with the Government of Lebanon, Ministry of Public Health and partners, WHO Lebanon has:



PROCURED PERSONAL PROTECTIVE EQUIPMENT

ensuring the protection of health staff since the start of the crisis

1 641 300 surgical masks **228 845** gowns/coveralls

385 950 N95 masks **59 360** goggles

215 945 gloves (box of 100)



INCREASED CLINICAL MANAGEMENT CAPACITY

through procuring

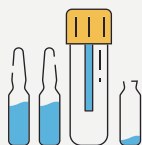
105 oxygen concentrators

19 ventilators

9 portable X Ray machines

45 syringe and suction pumps

55 Oximeters, tensiometers, and thermometers to support isolation sites



STRENGTHENED LABORATORY TESTING

through procuring material sufficient for for 92 days

183 520 RT-PCR tests

5 PCR machines

103 820 swabs for sample collection

1 automated extractor machine

18 Biological Safety Cabinets



PARTICIPATED IN THE GLOBAL SOLIDARITY TRIALS

4 hospitals in Lebanon are participating in the WHO-led clinical trials to assess the efficiency of different potential treatment regimens for COVID-19



STRENGTHENED HUMAN RESOURCE CAPACITY

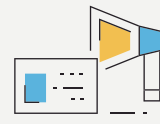
creating a larger pool of qualified health professionals

20 staff recruited to support surveillance unit, call center, contact tracing, IPC, and screening of travelers at airport

93 nurses deployed to isolation sites while operational

12 nurses, **2** medico-social staff, and **1** infectious disease specialist supporting Roumieh central prison in COVID-19 response

> 2 000 health and non-health staff trained on IPC, case management, and rapid response



PROVIDED INFORMATION TO PUBLIC

- **> 390 000** awareness material printed and disseminated
- **255 daily briefs** produced and disseminated, covering COVID-19 latest updates in Lebanon
- **78 interviews** conducted on COVID-19 in newspapers, radios and TV stations
- **> 17** technical feedback on thematic audiovisual material
- Launched in collaboration with partners different campaigns to **combat misinformation**, raise awareness on the **harmful effects of tobacco**, **youth mental health**, and **chronic conditions in the context of COVID-19**



PROVIDED TECHNICAL SUPPORT

10+ technical guidance documents developed, including back to school guidelines, testing strategy, isolation sites, preparedness in prisons, mental health in quarantine and protection resources

