

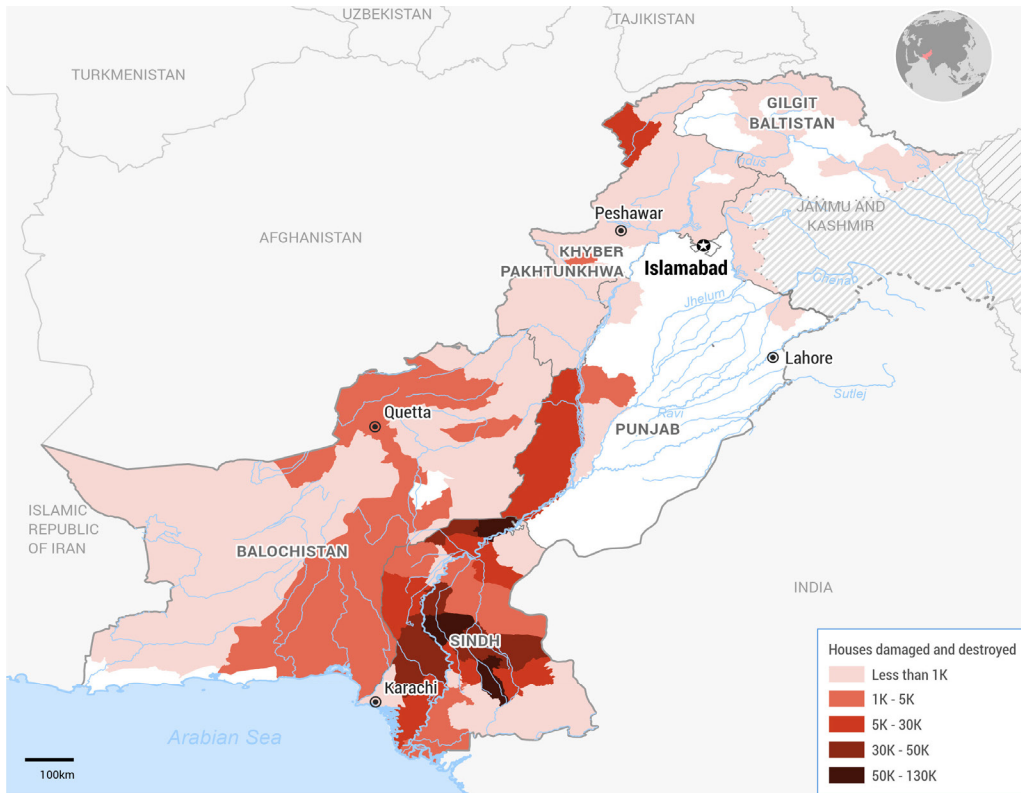


World Health Organization

REGIONAL OFFICE FOR THE Eastern Mediterranean

PAKISTAN

FLOODS IMPACT ON HEALTH



The designations employed and the presentation of the material in this publication do not imply the expression of any opinion whatsoever on the part of WHO concerning the legal status of any country, territory, city or area or of its authorities, or concerning the delimitation of its frontiers or boundaries. Dotted and dashed lines on maps represent approximate border lines for which there may not yet be full agreement.

1 735 deaths	12 867 injuries	33M people impacted	84 calamity hit districts
2M houses damaged or destroyed	2 000 (HFs) health facilities damaged	8M people need urgent essential healthcare	Over 1M crops and stocks impacting health and nutrition conditions



Ongoing health threats:
Malaria, diarrheal diseases, measles, Dengue fever, and severe acute malnutrition

WHO RESPONSE:

US\$ 10M
released from the WHO Contingency Fund for Emergencies.

US\$ 1.5M
worth of essential medicines and medical supplies provided.

10
emergency operation centers.

3
operational Hubs established.

WHO supports 26 nutrition stabilization centers across country.

WHO and Ministry of Health is strengthening the surveillance system and establishing Emergency Disease Surveillance System (EDSS).

HEALTH RESPONSE PRIORITIES

1 a coordinated delivery of essential health care services

2 efficient management of severe acute malnutrition

3 stronger outbreak detection and control