



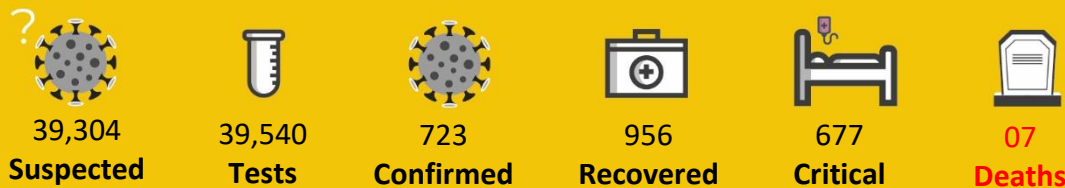
# WHO PAKISTAN COVID-19 SITUATION REPORT

Friday, 11<sup>th</sup> March 2022 (02 Years & 13 Days)

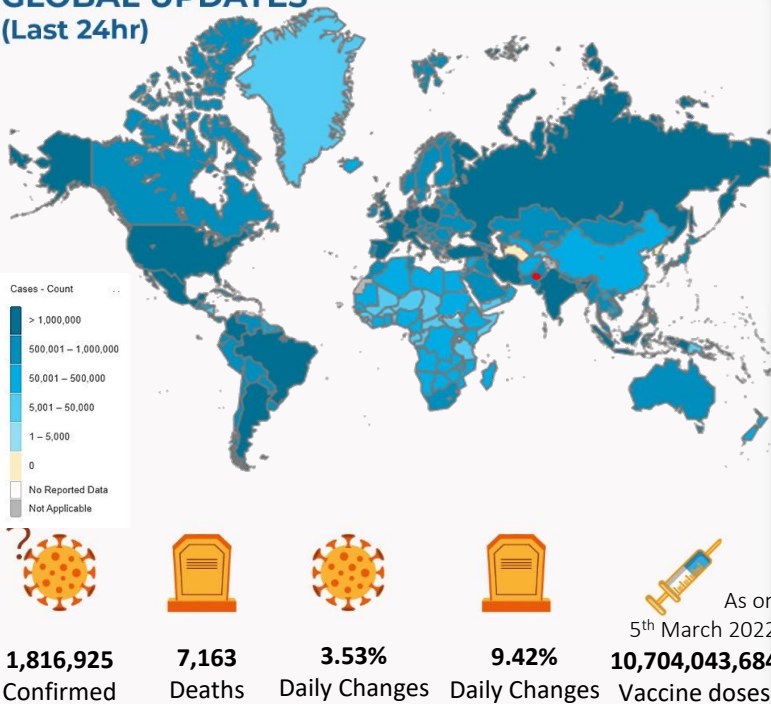
## COVID-19 PREVENTIVE MEASURES

- WEAR A **FACE MASK** PROPERLY
- WASH YOUR HANDS **WITH SOAP & WATER**
- GET **VACCINATED**
- PRACTICE PHYSICAL **DISTANCING**

## PAKISTAN SNAPSHOT (LAST 24hr)



## GLOBAL UPDATES (Last 24hr)

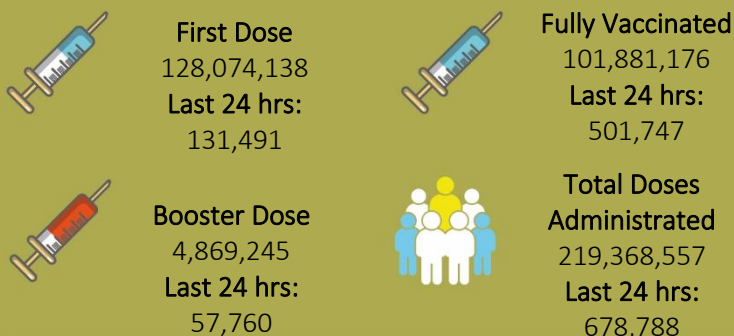


## PAKISTAN COVID-19 SNAPSHOT (Cumulative)

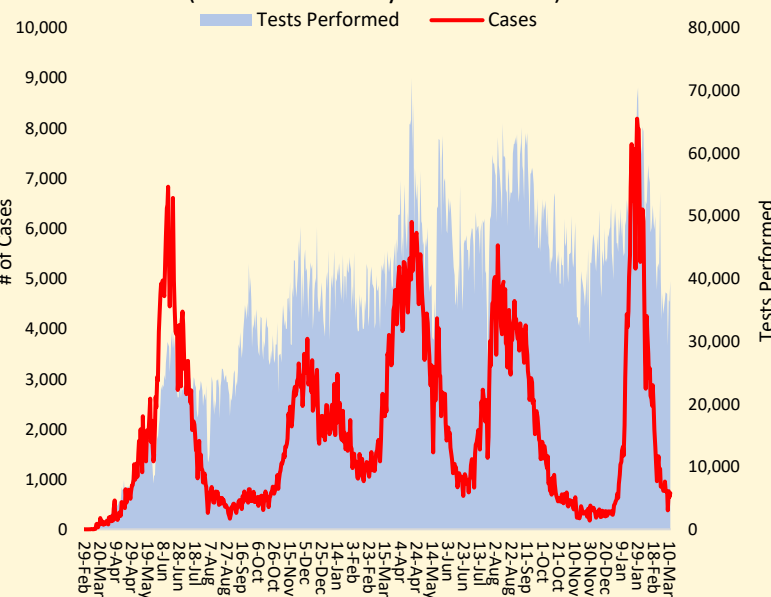


## PAKISTAN VACCINE STATS

As on 5<sup>th</sup> March 2022



## Daily Confirmed cases and Lab. Tests (From 29 February 2020 till date)



## Positivity Rate by Major Cities/Districts

Districts	Daily Trend	Test Conducted (Last 24hrs)	Positive Cases (Last 24hrs)	Positivity Rate (%)
Abbottabad		171	6	3.5%
Swat		103	0	0.0%
Peshawar		1794	56	3.1%
Faisalabad		1082	3	0.3%
Gujranawala		699	0	0.0%
Gujrat		262	0	0.0%
Lahore		4052	112	2.8%
Multan		1480	4	0.3%
Rawalpindi		1701	6	0.4%
Islamabad		2292	31	1.4%
Karachi		1875	109	5.8%
Hyderabad		1638	50	3.1%
Mirpur		59	2	3.4%
Muzaffarabad		84	1	1.2%

## FUNDS

Funds Requested for 2021: 14 million USD  
Gaps: 13.16 million USD

WHO appreciates the contribution of donors:  
(UNOCHA & USAID)

## Meetings & Coordination



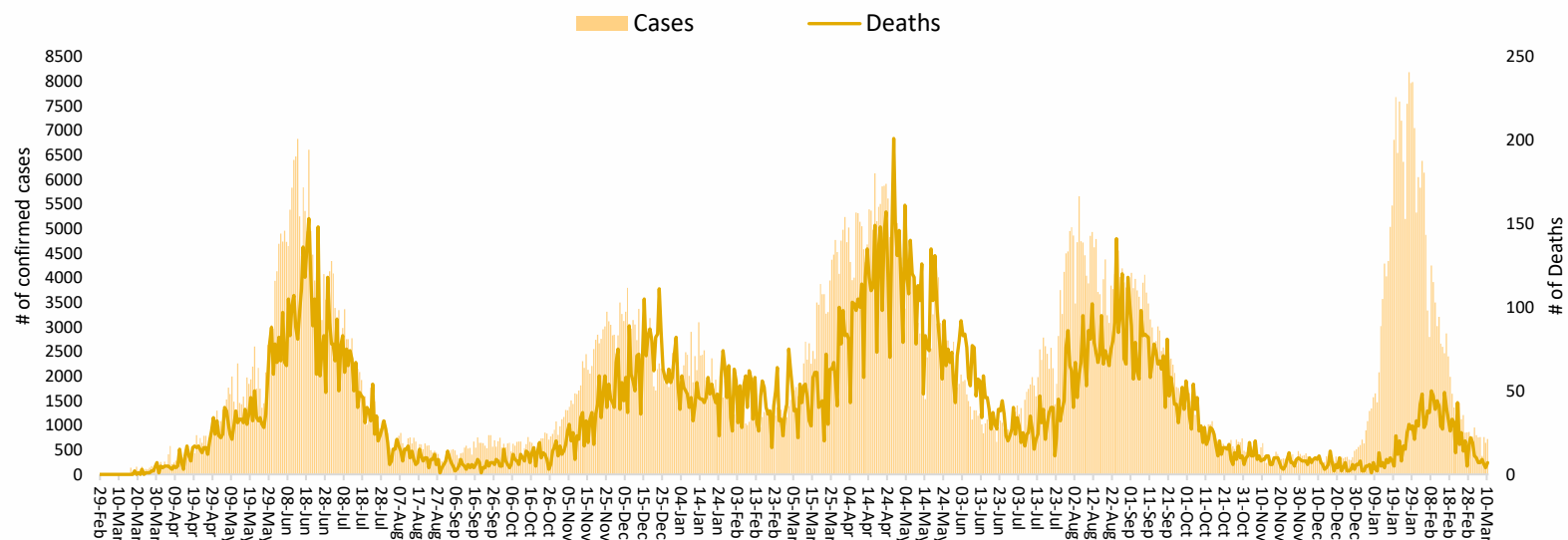
On 5th March 2022, WHO Country Representative Pakistan Dr Palitha Mahipala inaugurated a WHO's supported Maternal and Child Health (MCH) Centre at Mekhthar, district Loralai. The ceremony was graced by the District Health Officer Dr. Shabir Mengal and District Support Manager PPHI Dr Fahim Ahmed.

The support from WHO aims at strengthening Basic EMONC services through refurbishment of the MCH centre, provision of equipment, and capacity building of the health care provider working at the MCH Centre. The MCH Center serves more than 60,000 people in Mekhthar and nearby districts and conducts an average of 50-60 deliveries per month.

In his remarks, Dr Palitha thanked and praised the front-line healthcare workers for their hard work, commitment, and dedication to providing quality maternal and newborn care. The District Health Official appreciated WHO's role in strengthening Basic EMONC services at the PHC level.

### Daily Incidence and Deaths

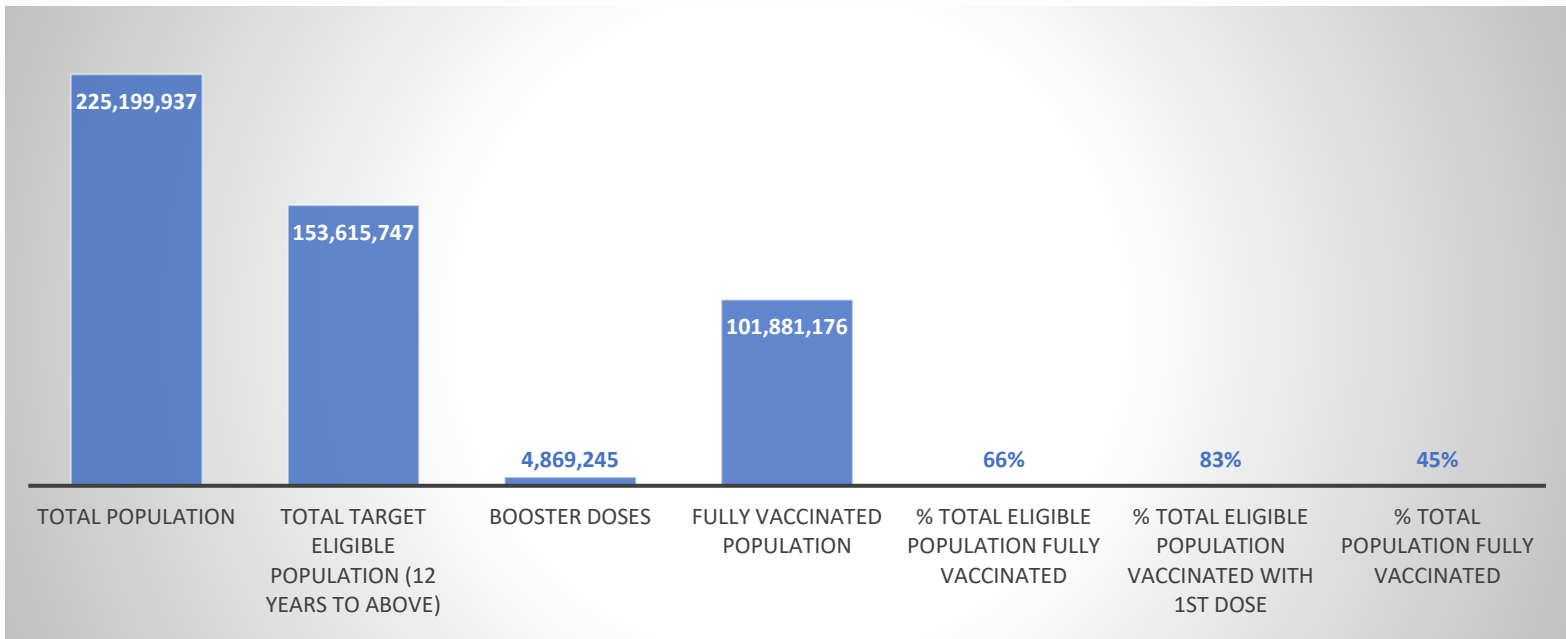
### From 29 February 2020 till data



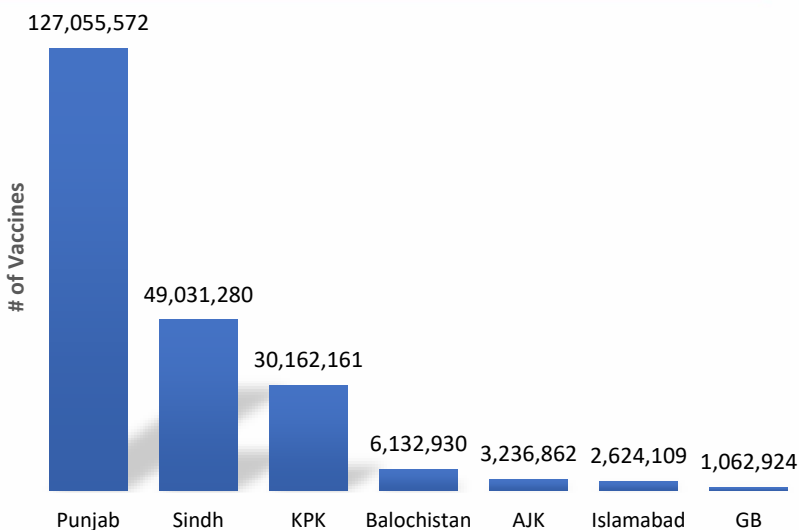
### Summary Table (Major Cities /Districts)

Districts	Hospitalized				Home or elsewhere Isolation
	Stable	On low flow oxygen	On High flow oxygen	On Vent	
Mirpur	00	00	00	00	23
Muzaffarabad	00	01	00	00	27
Quetta	00	00	02	00	44
Gilgit	00	06	00	00	123
Islamabad	01	21	45	03	286
Abbottabad	00	06	06	00	51
Peshawar	00	27	30	11	806
Swat	00	02	01	00	16
Bahawalpur	00	07	00	03	13
Faisalabad	00	08	27	02	21
Gujranwala	02	01	01	00	05
Lahore	09	07	64	52	467
Multan	11	01	00	01	26
Rawalpindi	00	03	07	00	13
Hyderabad	00	00	00	00	2,061
Karachi	00	49	33	09	5,876

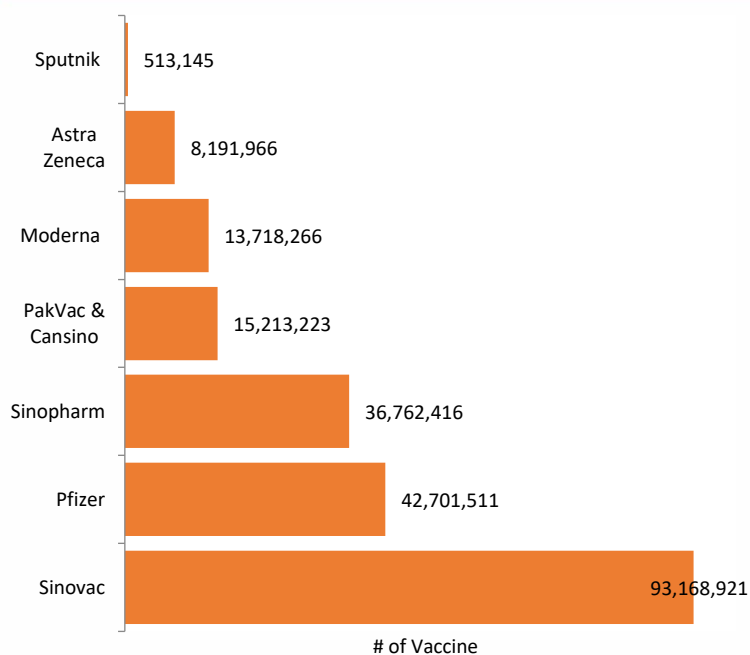
# COVID-19 Vaccine Doses Analysis



## COVID-19 Vaccination status by province



## COVID-19 Vaccination by vaccine doses



## Vaccination Targets-2022 Pakistan

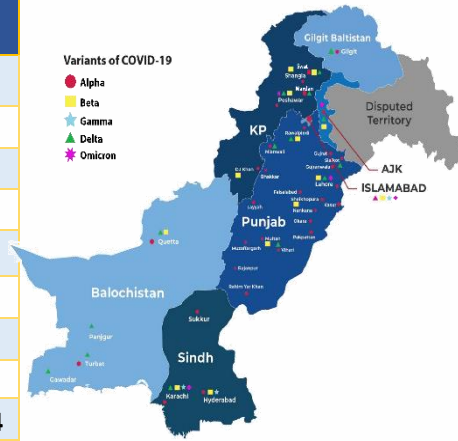
Target	Eligible Population	Total Target Min 1 Dose	% Of Eligible Population	% Of Total Population	Total Target Fully Vax	% Of Eligible Population	% Of Total Population
<b>Summary</b>							
March -22	153.6	130 Mn	85%	57%	110 Mn	72%	48%
Jun-22	197.3 Mn	165 Mn	84%	72%	141 Mn	71%	61%
<b>12+ Population</b>							
March -22	153.6	130 Mn	85%	57%	110 Mn	72%	48%
June - 22	153.6	138 Mn	90%	60%	123 Mn	80%	54%
<b>5-11 years Population</b>							
June - 22	43.7 Mn	27 Mn	62%		18 Mn	41%	

# SARI/ILI surveillance summary, Week-09, 2022 (182 Sentinel Sites)

Province	SARI Cases					ILI Cases					Contact Tracing					Sentinel Sites			Bed Occupancy		
	Week-9					Week-9					Week-9					Week-9			Week-9		
	SARI Reported	Tested		Lab Positive		ILI Reported	Tested		Lab Positive		Contact Identified	Contact Lab Tested		Contact Lab Positive		Total Sentinel Sites	Sites Reported		Total Allocated Beds	Occupied Beds	
		No	%	No	%		No	%	No	%		No	%	No	%		No	%		No	%
Islamabad	89	89	100.0	3	3.4	255	247	96.9	7	2.8	412	395	95.9	16	4.1	7	7	100.0	544	90	16.5
Punjab	1248	1248	100.0	34	2.7	2526	2053	81.3	71	3.5	1483	1165	78.6	54	4.6	53	53	100.0	2650	212	8.0
Sindh	772	772	100.0	69	8.9	1179	984	83.5	88	8.9	1206	1120	92.9	165	14.7	22	22	100.0	2030	67	3.3
KP	131	131	100.0	25	19.1	3987	3016	75.6	148	4.9	34	34	100.0	2	5.9	30	30	100.0	1448	94	6.5
Balochistan	169	149	88.2	4	2.7	801	596	74.4	10	1.7	167	131	78.4	3	2.3	44	44	100.0	135	38	28.1
AJK	124	124	100.0	17	13.7	507	471	92.9	28	5.9	692	692	100.0	27	3.9	13	13	100.0	215	10	4.7
GB	9	9	100.0	1	11.1	12	12	100.0	0	0.0	0	0	0.0	0	0.0	13	10	76.9	51	0	0.0
<b>Total</b>	<b>2542</b>	<b>2522</b>	<b>99.2</b>	<b>153</b>	<b>6.1</b>	<b>9267</b>	<b>7379</b>	<b>79.6</b>	<b>352</b>	<b>4.8</b>	<b>3994</b>	<b>3537</b>	<b>88.6</b>	<b>267</b>	<b>7.5</b>	<b>182</b>	<b>179</b>	<b>98.4</b>	<b>7073</b>	<b>511</b>	<b>7.2</b>

## COVID-19 sequenced genomes

Province	Wild Type	ALPHA	BETA	GAMMA	DELTA	DELTA +	Omicron	Total
Punjab	46	371	16	01	610	-	2,985	4,029
Sindh	77	121	235	34	545	-	510	1,522
KP	28	48	06	-	65	-	519	666
Baluchistan	07	03	18	-	76	-	02	106
Islamabad	248	2,789	19	01	4,975	03	1,487	9,522
Gilgit	05	-	-	-	40	-	122	167
AJK	04	04	01	-	26	-	09	44
Unspecified	27	44	15	01	31	-	-	118
<b>Totals</b>	<b>442</b>	<b>3,380</b>	<b>310</b>	<b>37</b>	<b>6,368</b>	<b>03</b>	<b>5,634</b>	<b>16,174</b>



Data Source: GISAID : <https://www.gisaid.org>, National Institute of Health, Pakistan, Aga Khan University hospital, Karachi. The reported data is inclusive of PCR based genotyping for SARS-CoV2 variants and Whole Genome Sequencing information. Variant of Interest data is not including in this report.

## Summary Table by Province

Provinces	Lab Status				Hospitalized				Home Isolation	Total Recovered	Total Deaths
	Tested		Positive		Stable	Oxygen		On Vent.			
	Last 24hrs	Total (PCR+RA)	Last 24hrs	Total		On low flow	On High flow				
AJK	636	400,458	10	43,159	02	02	02	00	150	42,213	790
Balochistan	522	530,982	24	35,427	00	00	02	00	74	34,974	377
GB	333	245,082	10	11,608	00	06	00	00	163	11,248	191
Islamabad	2,292	2,743,688	31	134,767	01	21	45	03	286	133,392	1,019
KP	8,951	4,477,776	167	217,857	00	69	102	11	1,894	209,484	6,297
Punjab	17,065	10,304,480	147	503,426	27	82	159	63	2,855	486,705	13,535
Sindh	9,741	8,122,837	334	571,268	11	55	46	09	11,669	551,389	8,089

### Contact Details

#### Dr Palitha Mahipala

WHO Representative  
WHO Country Office  
Islamabad – Pakistan  
Tel: +92 51 9255183  
Email: mahipalap@who.int

#### Dr Michael Lukwiya

Incident Manager  
WHO Country Office  
Islamabad - Pakistan  
Tel: +92 51 9255184  
Email: lukwiyam@who.int