

COVID-19 CASES IN THE GAZA STRIP

Weekly comparison from 10/11-16/11 to 17/11-23/11 2020

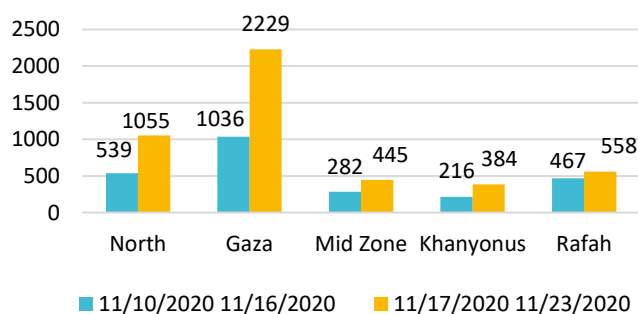
GENERAL

		Weekly cases		Cumulative
		10/11/2020 16/11/2020	17/11/2020 23/11/2020	31/1- 23/11/2020
# of samples tested	total	17,462	19,371	176,022
	# of positive cases*	2,540	4,671	16,142
# of positive cases*	mild	2,493	4,502	
	moderate	13	91	
	severe	25	55	
	critical	9	23	
positivity rate	total	14.55%	24.11%	9.2%
	contacts	15.3%	26.2%	
	suspect	25.5%	31.4%	
	surveillance	8.8%	11.0%	

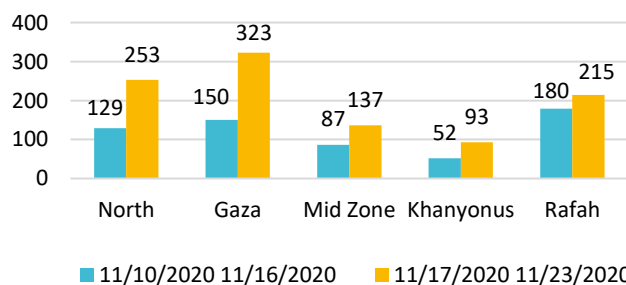
* The reported classification of positive cases by severity reflects the status at first day of detection. This classification may change over time according to progression of COVID-19 infection among patients.

- There is an increase in reported positive COVID-19 cases along all Gaza Strip governorates. Regarding the incidence per 100,000 populations, there is a noticeable increase in this rate at Gaza governorate (from 150/100,000 up to 323/100,000) and North governorate (from 129/100,000 to 253/100,000).

New reported COVID-19 cases by district

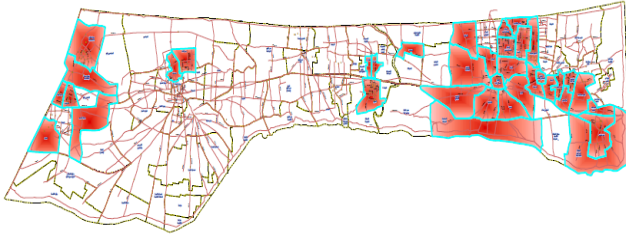


Reported COVID-19 incidence/100,000 population by district

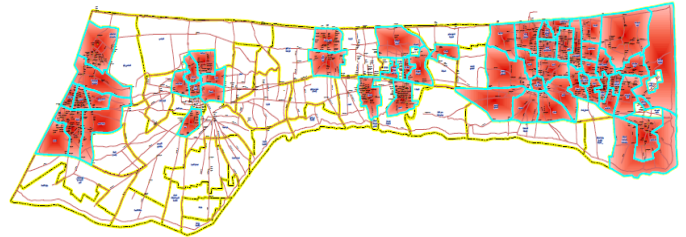


- The PNIPH/WHO supported MOH in developing a traffic light system (TLS) which distributes the new detected COVID-19 cases geographically throughout the Gaza Strip neighbourhoods during the previous 7 days. This system classifies the neighbourhoods by colour code (Red, Yellow, Green) to visualise the high-risk areas and support decisions.

- The MAP below (developed by MOH) reflects that 56 out of 96 neighbourhoods were coded by red colour on 23 November 2020, compared to 36 neighbourhoods on 16 November. It is important to mention that the population living in the classified red neighbourhoods forms more than 50% of the total population living in Gaza Strip.



16 November 2020

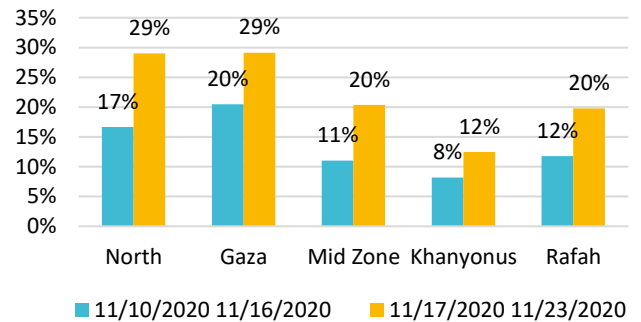


23 November 2020

POSITIVITY RATES

- The positivity rate increased from 14.5% to 24% comparing between the two reporting weeks: the highest increase since the beginning of the community outbreak in Gaza Strip.
- The positivity rate increased during the comparison weeks along all sample types (contacts, suspected cases and random screening) as illustrated in the table above.
- The positivity rate increased in all Gaza Strip districts as presented in the graph on the right.
- The overall positivity rate has been continuously increasing during the last weeks reaching 9.2%.

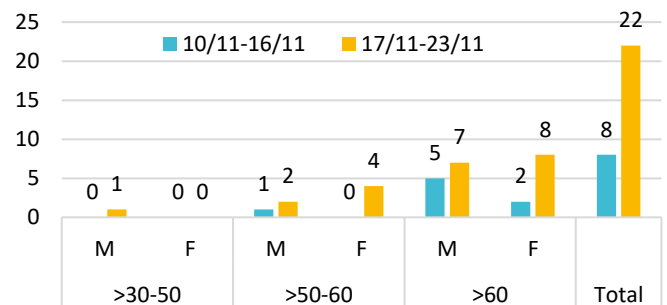
Reported COVID-19 Positivity Rates by districts



REPORTED COVID-19 DEATHS

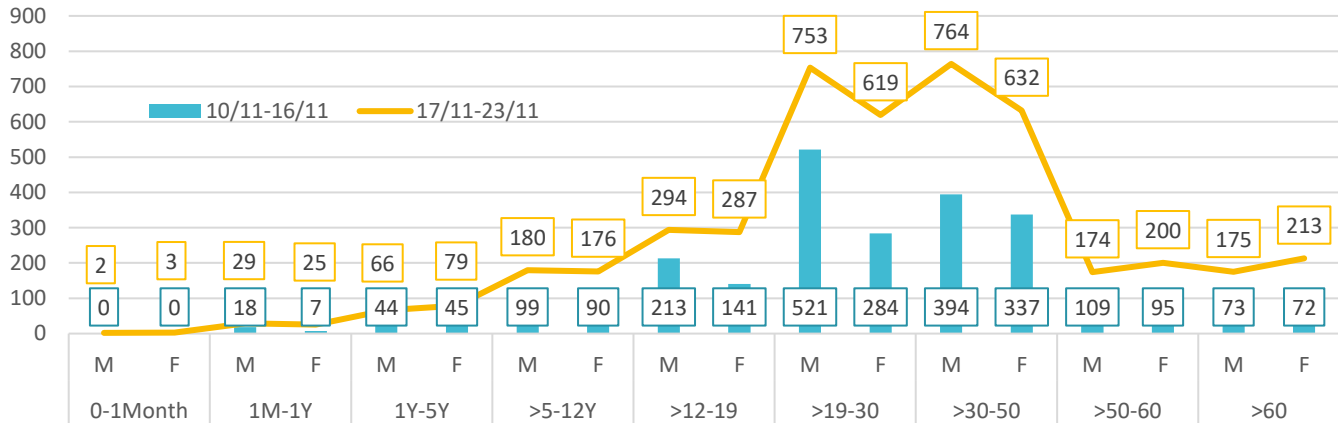
- The total reported deaths sharply increased from 8 in the week 10-16 November to 22 in the week 17-23 November 2020. This is the highest reported number of deaths in a one-week period.
- One death was reported among age group >30-50, while six deaths were reported among age group >50-60, showing a significant increase with the previous reporting week.
- Deaths among the age group >60 increased from 7 to 15 comparing between the two reporting periods.
- Percentage of females among total deaths increased to 52% in the week 17-23 November from 33% in the previous week.

Reported COVID-19 deaths distributed by age group and gender



DISTRIBUTION OF COVID-19 CASES AMONG AGE GROUPS AND GENDER

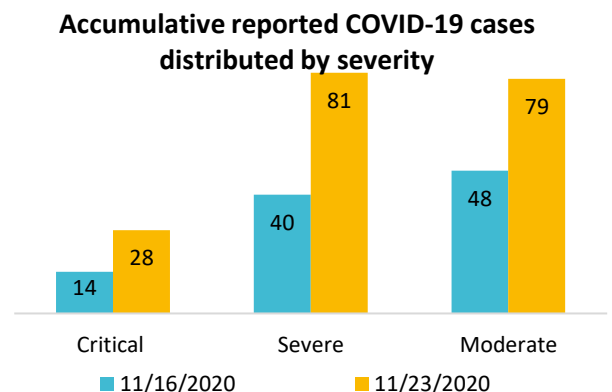
Reported new COVID-19 cases distributed by age groups and gender



- There is a noticeable increase in number of COVID-19 cases among almost all age groups and also among both males and females among the same age group.
- There is a continuous increase in reporting of new COVID-19 cases among age group >5-19, both among males and females in the same group.
- There is a noticeable increase in reported cases among males and females >50-60 years and an alarming increase in the reported COVID-19 cases among age group above 60 reaching 140% among males and 196% among females. Reported cases among older age groups also indicate a higher risk for COVID-19 severe complications.

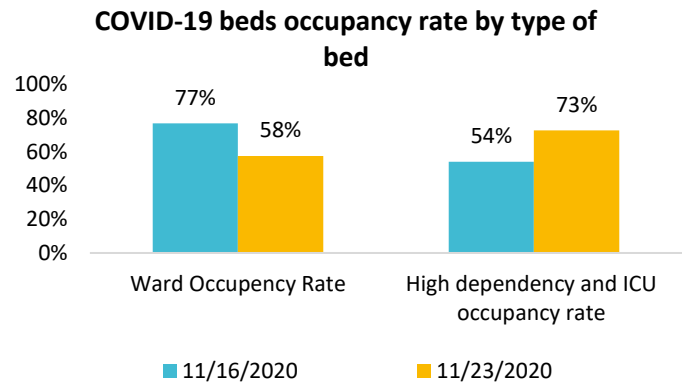
DISTRIBUTION OF COVID-19 CASES BY SEVERITY

- The total number of accumulative severe and critical cases increased in this reporting week when comparing to the previous reporting week, indicating that infection is reaching more vulnerable groups at the community level.
- The total accumulative moderate cases increased from 48 on 16/11 to 79 cases on 23 /11. Severe cases increased from 40 cases to 81 cases and critical cases increased from 14 to 18 cases.
- There is an increase in reporting of severe and critical COVID-19 cases among young age groups 30-50 years.



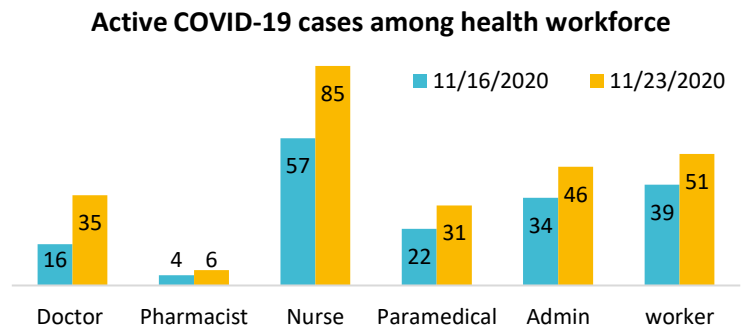
HEALTH SYSTEM CAPACITY (COVID-19 MANAGEMENT)

- According to MOH's latest update, 500 beds are assigned for COVID-19 patients at the Turkish hospital and European Gaza Hospital. 350 beds of these are for mild cases with co-morbidities and moderate cases, and 150 beds are for severe and critical cases.
- MOH started home isolation for mild COVID-19 cases who do not have any known co-morbidities since 14 November 2020. As a result, the overall ward occupancy rate decreased from 77% by 16 November to 58% by 23 November 2020.
- The occupancy rate of high dependency and ICU beds (for severe and critical cases) increased from 54% to 73% between the two reporting periods, explained by the increase in the reported COVID-19 infections at community level where older age groups and other vulnerable groups are more at risk of infection and to develop severe complications.



HEALTH CARE WORKERS INFECTIONS

- There is an increase in newly detected COVID-19 cases among all health workforce professions comparing with the previous week.
- The increase of newly reported COVID-19 cases is among male and female health care workers, except for female nurses where the number of newly reported COVID-19 infections decreased to 21 compared to 24 in the previous week.
- Most reported COVID-19 infections among health workers are in hospital health settings.



RECOMMENDATIONS

- There is an increase in number of cases in all districts in the Gaza Strip, increasing the infection rate among the most vulnerable population. More than 50% of the total population in Gaza live in the 56 neighbourhoods classified as RED.
- There is an alarming increase in infections among older age groups indicating the urgent need for further measures to protect vulnerable populations and investigate the sources of infection.
- There is an increase in reported cases among school and university age groups both among males and females when comparing between the two reporting periods. As highlighted in the previous report, this observation should be monitored closely and investigated if the increase is related to contact at schools and/or universities.
- There is a change in the status of severity of COVID-19 infection among younger age groups. As a result, one death was reported from the age group >30-50. This situation should be closely monitored.
- There is an increasing trend in reported COVID-19 infections among health workforce, requiring further efforts of implementing and monitoring Infection Prevention and Control (IPC) measures at all health care settings.

- **The previous report and this report reached similar alarming trends of increase in total cases, increase in the severity of cases and also higher utilization of existing MOH capacity. Thus, urgent and stricter social procedures and community awareness initiatives are highly recommended to avoid further deterioration of the situation and potential breakdown of the health care system in Gaza.**