

CURRENT SITUATION

Somalia is experiencing worsening drought following four consecutive seasons of failed rainy season. According to the Food Security and Nutrition Analysis Unit (FSNAU) and Famine Early Warning Network (FEWS NEST), Somalia received suboptimal amount of drier rains than expected since October 2021. Currently, the United Nations Office for the Coordination of Humanitarian Affairs (UNOCHA) estimates that the number of people affected by extreme drought has risen from 7.8 million in March to 8.3 million in January 2023, with 1.4 million displaced from their homes in search of water, food, and pasture. Some 6.5 million people – 40.6 per cent of the population - are acutely food insecure. For the first time since 2017, the Integrated Food Security Phase Classification has confirmed pockets of catastrophic food insecurity (Phase 5) affecting more than 322,010 people. An estimated 1.8 million children under 5 face acute malnutrition, including 478,000 who are severely malnourished. It is also estimated that about 8 million people lack access to safe water and proper sanitation. The current situation including the displacement has led to more people being vulnerable to epidemic prone diseases, particularly acute diarrhoeal disease, and measles.










SUMMARY STATISTICS FOR DROUGHT-AFFECTED DISTRICTS

7.8 million people estimated to be affected by the current drought; 1.4 million have been internally displaced by drought and 50,000 have migrated to Ethiopia and Kenya¹.

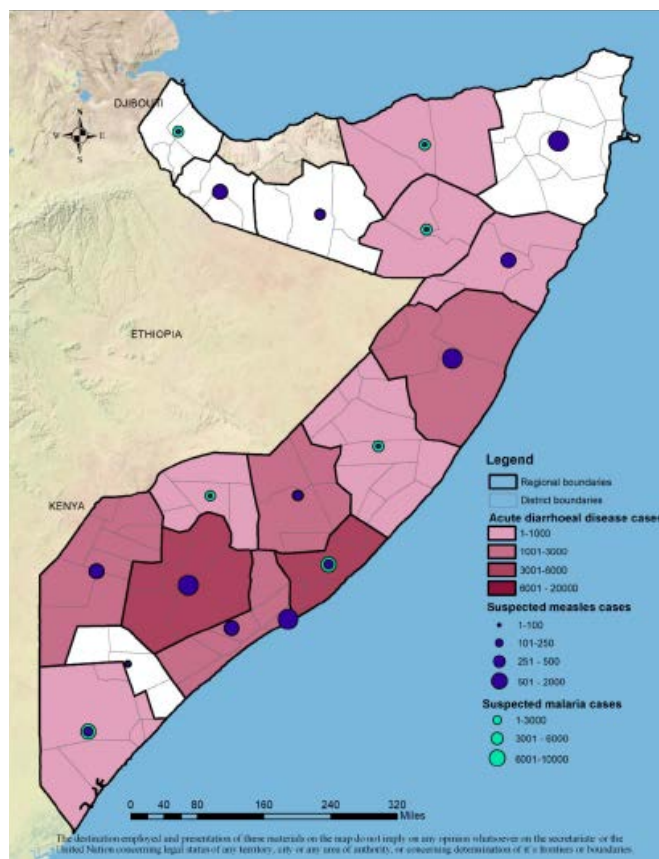
Some **6.5 million** people - **40.6 per cent** of the population - are experiencing acute food insecurity. **45 per cent** of children are facing acute malnutrition².

An estimated **8.3 million** people in the country require humanitarian assistance and protection.

Epidemiological weeks 06-07, 06/02/2023-19/02/2023

| | |
|---|---|
|  | 417 suspected cholera cases |
|  | 5828 acute diarrhoeal disease cases |
|  | 339 suspected measles cases |
|  | 3415 SARI cases |
|  | 909 confirmed cases of Malaria in December 2022 |
|  | 435 health facilities reporting through Early Warning Alert and Response Network (EWARN) |
|  | 2163 community health workers deployed in high risk areas including in drought affected districts |

REPORTED CASES OF ACUTE DIARRHOEAL DISEASE, SUSPECTED MEASLES, SARI AND CLINICALLY DIAGNOSED MALARIA CASES IN DROUGHT-AFFECTED REGION OF SOMALIA, (EPIDEMIOLOGICAL WEEK 1-7 2023; 02 JANUARY- 19 FEBRUARY 2023)



The Federal Ministry of Health and WHO monitor the trends of epidemic-prone diseases in drought affected districts using data from the electronic-based EWARN, fever and rash surveillance system and community health workers deployed in drought affected districts. With support from the Central Emergency Response Fund (CERF) and in collaboration with state ministries of health, WHO is implementing activities aimed at preventing disease outbreaks, including the timely detection and response to alerts of epidemic-prone diseases reported among vulnerable communities in drought affected districts.

1 Somalia: Drought response & famine prevention (15 January - 15 February 2023) - Somalia | ReliefWeb
2 Integrated Food Security Phase Classification Report -February 2023

CHOLERA IN DROUGHT-AFFECTED DISTRICTS

Recurrent cholera outbreaks have been reported in the drought-affected districts of Somalia since 2022, with no interruption in transmission in Banadir region. (Figure 1). The number of cholera cases reported in drought affected districts have increased significantly compared to the same time over the past two years. This increase is attributed to a higher proportion of people with limited access to safe water and uncontrolled cross border movement triggered by drought. Since epidemiological week 1 of 2023, a total of 1504 cases of suspected cholera and one death (Case Fatality Rate 0.1%) were reported in 26 drought affected districts of which 917 (61%) cases were children under 5, 737 (49%) were women and 605 (40.2%) were severe cases. In 2023, The regions reporting most of the cases are Lower Juba (480), Banadir (372) and Lower Shebelle (261) (see Table 1). Despite reduction in cases in Kismayo and Afmadow, cholera cases have been reported in Belethawa district bordering Kenya and Ethiopia.

Since January 2023, total of 430 stool samples were collected from suspected cases admitted in eight treatment facilities supported by WHO and analyzed in the national public health laboratory in Mogadishu, out of which 4(0.9%) samples tested positive for *Vibrio cholerae* O1 serotype Ogawa. Culture and sensitivity studies conducted showed that the *V. cholerae* serotypes isolate is sensitive to chloramphenicol and tetracycline but resistant to ampicillin and nalidixic acid.

ACUTE DIARRHOEAL DISEASES

The number of new acute diarrheal disease cases reported in the Early Warning Alert and Response Network (EWARN) and from the communities in drought affected districts increased by two-fold during the first five weeks of 2023 compared to the past two years. Over the past two weeks, the number of acute diarrhoeal cases increased by 11% from 2761 cases in week 6 to 3067 in week 8 of 2023. The increase in new cases is linked to increased displaced population in drought affected districts in need of water, sanitation and hygiene. Since epidemiological week 1 of 2023, 19,943 cases of acute diarrhoeal disease were reported of which 14,643 (73%) were children under five. The regions reporting most of the cases are Banadir (5506), Bari (3074), and Lower Shabelle (2222) (Table 1). WHO conducts sentinel-based surveillance for rotavirus in Banadir region which is the most common case of acute diarrhoeal disease among children aged under 5 years worldwide. Of the 200 stool samples collected from three sentinel centers in Banadir region from children aged under 5 years in 2023, 102 (50%) were tested positive for rotavirus infections.

INFLUENZA SURVEILLANCE

The trends of cases of severe acute respiratory illness (SARI) increased by two fold in 2023 compared to the same time in the past two years. This increase may be attributed to increased displaced people who have poor shelter which resulted in people living in overcrowded conditions in camps (Figure 3). Since epidemiological week 1 of 2023, 10,347 cases of SARI were reported from the drought affected districts of which 7058(68%) are children under five. The regions reporting most of the cases are Galgadud (3658), Banadir (1783), and South Mudug (1256), (Table 1). WHO, in collaboration with United States Center for Disease Control (US-CDC) and the

Week 1-7 of 2023 (2 January to 19 February 2023)

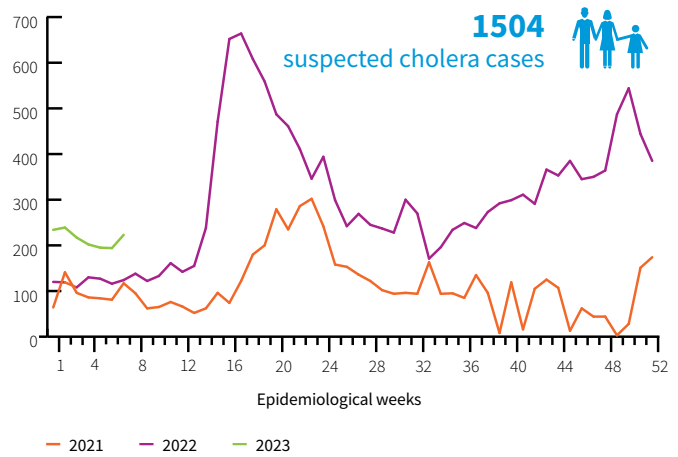


Figure 1. Trends of suspected cholera/acute watery diarrhoea cases reported in drought-affected regions/districts of Somalia, 2021-2023

Week 1-7 of 2023 (2 January to 19 February 2023)

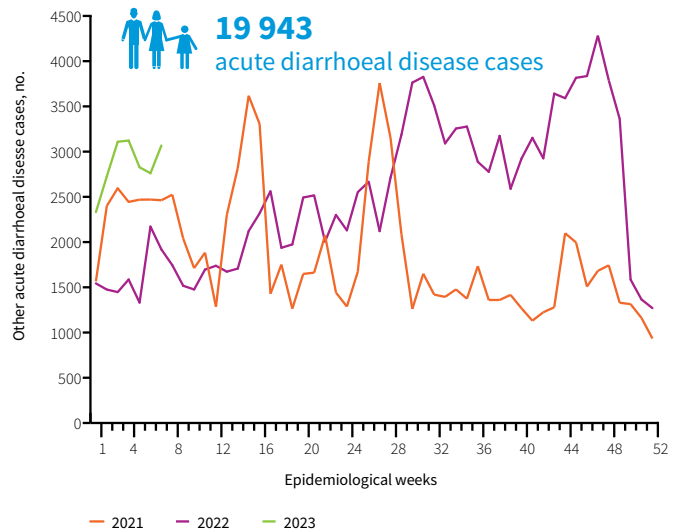


Figure 2. Trends of acute diarrhoeal disease cases reported in drought-affected regions/districts of Somalia, 2021-2023

Week 1-7 of 2023 (2 January to 19 February 2023)

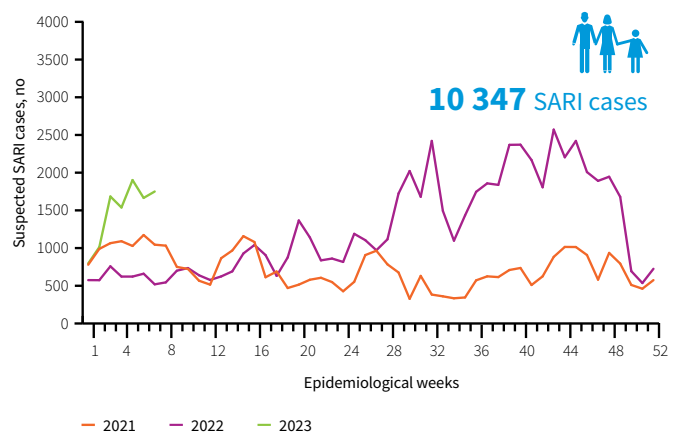


Figure 3. Trends of severe acute respiratory infection (SARI) reported from drought affected regions/districts of Somalia, 2021-2023

Pandemic Influenza Preparedness (PIP) Framework supports Ministry of Health to implement sentinel-based surveillance for seasonal influenza in three sites-two located in Banadir region and one in Puntland.

In 2023, a total of 662 suspected cases of seasonal influenza were enrolled at three sentinel sites and were reported in the platform of Eastern Mediterranean Flu (EMFLU) network. Since epidemiological week 1 of 2023, 597 influenza cases were tested at the National Public Health Laboratory of which 25 (4.4%) were tested positive for influenza; 1 (4%) were positive for seasonal influenza A (H1N1); 2 (8%) were positive for influenza A (H1N1) pdm09, 9(1.5%) were positive for influenza B Victoria Lineage.

MEASLES UPDATES

The number of suspected cases of measles reported in January 2023 decreased by two-fold compared to the same period in 2022. This reduction in cases is linked to an increase in the number of children vaccinated mainly in IDP camps through integrated outreach services supported by WHO. (Figure 4). A total of 1265 cases of measles were reported through the AFP/Polio surveillance system from week 1 to week 7 of 2023 of which 901(71%) are children under 5. The regions reporting most cases are Bay (481), Banadir (367) and Lower Shabelle (89). Of the 200 blood samples collected from cases of fever and rash,153 (76.5%) were tested positive for measles specific Immunoglobulin M(IgM)

MEASLES VACCINE UPDATES

A total of 596,737(91%) out of the targeted 658,035 children under one year received the first dose of measles-containing vaccine (MCV1) in drought-affected districts in 2022 according to data from district health Information software 2 (DHIS2) (Figure 5)³. From 2019 to 2022, the measles vaccination coverage ranged between 80% and 91% per month compared to the national target of 95%.

MALARIA UPDATES

The number of laboratory-confirmed cases of malaria reported through DHIS2 has gradually decreased since January 2021 which might be linked scaling up of implementation of additional malaria control interventions in drought affected districts (Fig 6). Since epidemiological week 1 of 2023, a total of 28 717 cases of suspected malaria have been reported of which 909 (3.2%) have been confirmed positive by Rapid Diagnostic Test (RDT) and blood smear. Of the 909 confirmed cases, 255 (28%) are children under 5. Regions reporting most of the suspected malaria cases in 2023 are Bay (3182) Gedo (2839) and Middle Shebelle (2,633) (Table 1).

POLIO UPDATE

A total of 52 cases of acute flaccid paralysis (AFP) were reported in January 2023, of whom 26 case were female and 26 were male. Of the 52 AFP cases reported,34 (65.4%)cases had stool samples collected and analysed in the laboratory while 18 (34.6%)AFP cases are pending laboratory diagnosis.

In 2023 one circulating vaccine-derived poliovirus type 2 (cVDPV2) was isolated from Acute Flaccid Paralysis (AFP) cases, compared to five cases isolated in 2022.

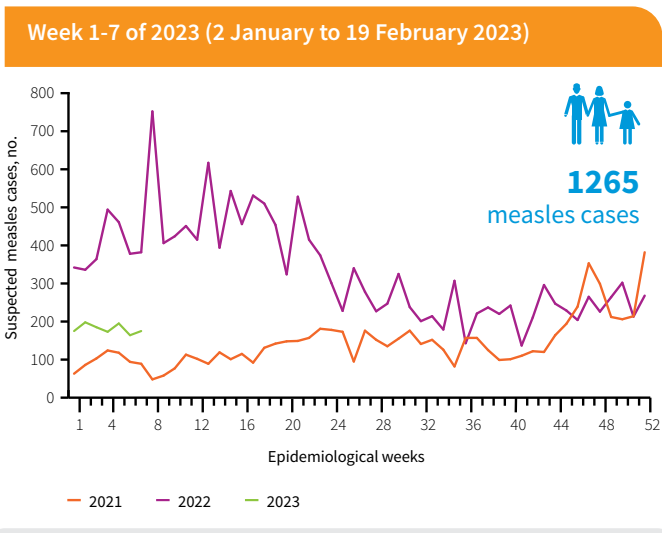


Figure 4. Trends of measles cases reported in drought-affected regions/districts of Somalia, 2021-2023

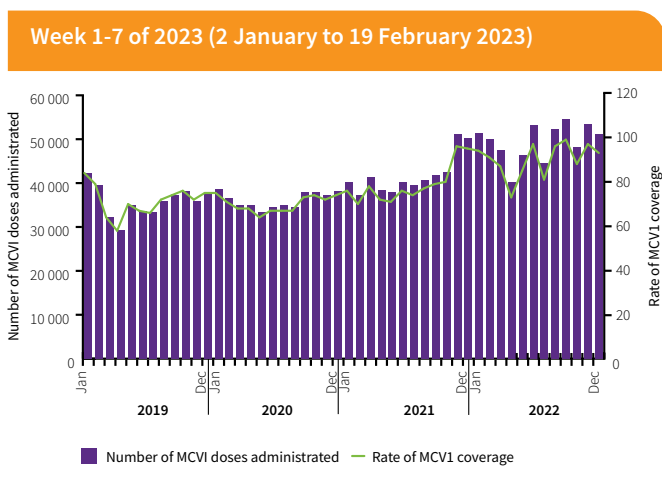


Figure 5. Number of children under 1 vaccinated against measles by month, 2019-2022

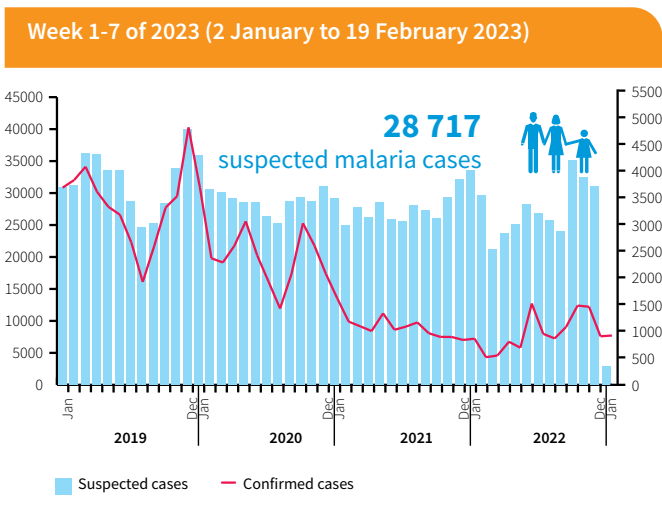


Figure 6. Trends of malaria cases reported in drought-affected regions, 2019-2023

3 Measles vaccination data for January 2023 is missing

A total 221 environmental samples were collected from 16 sites and sent to the laboratory in 2022. Out of these samples, four were positive for cVDPV2, one was positive for VDPV2, 47 were positive for No Polio Enterovirus (NPEV), two Sabin

like virus type 3(SL3), fifteen Sabin like virus type (SL2), one positive for both SL2, None enterovirus, one hundred fourteen samples were negative and thirty eight are pending for processing.

Table 1: Cumulative number of acute diarrhoeal disease, suspected cholera, suspected measles, SARI, and suspected malaria cases in drought-affected regions of Somalia (epidemiological weeks 1 -Week 07 2023, 06 to 19 February 2023)

| Regions | Acute diarrhoeal disease ⁴ | Suspected Measles cases ⁵ | Suspected Malaria case ⁶ | SARI cases ⁷ | Suspected cholera cases ^{8,9} |
|-----------------|---------------------------------------|--------------------------------------|-------------------------------------|-------------------------|--|
| AWDAL | 0 | 10 | 1425 | 0 | 0 |
| BAKOOL | 198 | 34 | 984 | 38 | 66 |
| BANADIR | 5506 | 367 | 2318 | 1783 | 372 |
| BARI | 3074 | 29 | 2444 | 78 | 0 |
| BAY | 1366 | 481 | 3182 | 686 | 106 |
| GALBEED | 0 | 9 | 716 | 0 | 0 |
| GALGADUD | 157 | 0 | 1362 | 3658 | 0 |
| GEDO | 433 | 5 | 2839 | 692 | 128 |
| HIRAN | 769 | 32 | 1362 | 492 | 1 |
| KARKAR | 1342 | - | 583 | 389 | 0 |
| LOWER JUBA | 0 | 54 | 1151 | 0 | 480 |
| LOWER SHABELLE | 2222 | 89 | 1068 | 303 | 261 |
| MIDDLE JUBA | 0 | 0 | 0 | 0 | 0 |
| MIDDLE SHABELLE | 236 | 24 | 2633 | 22 | 90 |
| MUDUG | 1382 | 69 | 2268 | 273 | 0 |
| NUGAL | 1587 | 16 | 1289 | 427 | 0 |
| SOUTH MUDUG | 719 | 0 | 0 | 1256 | 0 |
| SAHIL | 0 | 1 | 504 | 0 | 0 |
| SANAG | 947 | 0 | 803 | 0 | 0 |
| SOOL | 5 | 1 | 390 | 245 | 0 |
| TOGDHER | 0 | 44 | 1373 | 0 | 0 |
| TOTAL | 19 943 | 1265 | 28 717 | 10 347 | 1504 |

Note: Continuous data quality review has been conducted which may lead to variation of figures for new cases and cumulative cases of epidemic prone disease in each region.

4 Source of data is EWARN as of February 2023

5 Source of data is fever and rash surveillance system as of January 2023

6 Source of data is DHIS2 as of January 2023

7 Source of data is EWARN as of February 2023

8 Source of data is suspected cholera/acute watery diarrhoea surveillance system managed by the FMOH as of February 2023

9 Source of data is EPI/Polio Weekly update sitrep report.



@WHO Somalia



WHO Somalia



somaliawho