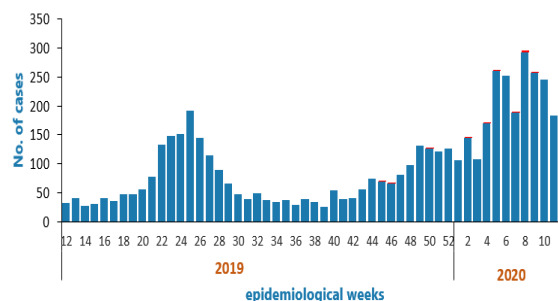


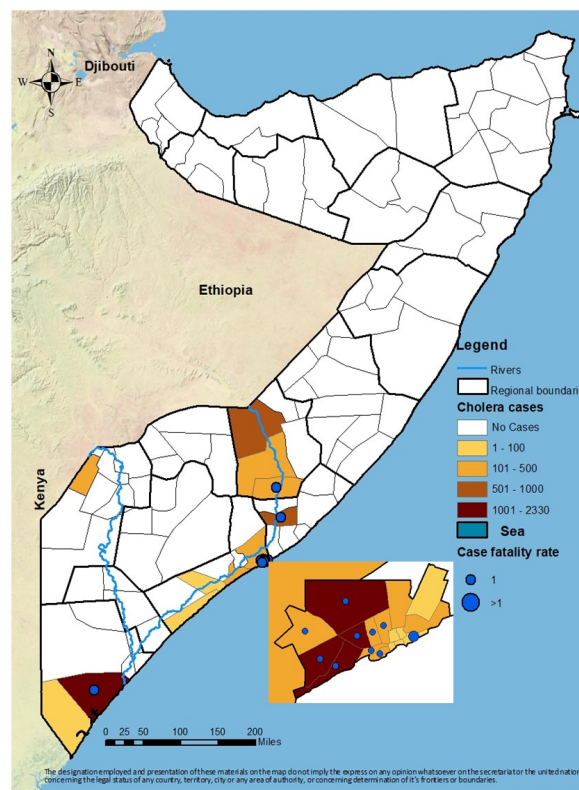
### Highlights

- During week 12, a total of 180 new cases of cholera and 0 death were reported from 16 districts of Banadir, Jowhar district and 3 districts of Hiran regions. No case was reported from other areas
- Since December 2017, a total of 12 251 cumulative cases, including 60 deaths (CFR 0.5%), were reported from three (3) states of Somalia (Hirshabelle, Jubbaland and South West state) and Banadir region
- Since December 2017 a cumulative attack rate of 273 cases per 100 000 population was reported, with Kismayo (Jubbaland) and Daynile (Banadir) districts being the most affected districts
- Though the overall case-fatality rate (CFR) was 0.5%, higher rates were observed in Abdilaziz, Karan and Kurtunwarey districts exceeding the WHO's threshold of <1% case fatality rate
- Of the 1 398 stool samples tested for culture since December 2017, 376 samples were tested positive for Vibrio cholerae serotype Ogawa
- Culture and sensitivity tests performed at the central public health laboratory in Mogadishu, show that the isolated Vibrio cholerae, O1, serotype Ogawa is sensitive to chloramphenicol and tetracycline but resistant to ampicillin and nalidixic acid

Trends of cholera cases in Somalia from week 12 2019 to week 12 2020



Distribution of cholera cases from December 2017 to week 12/2020

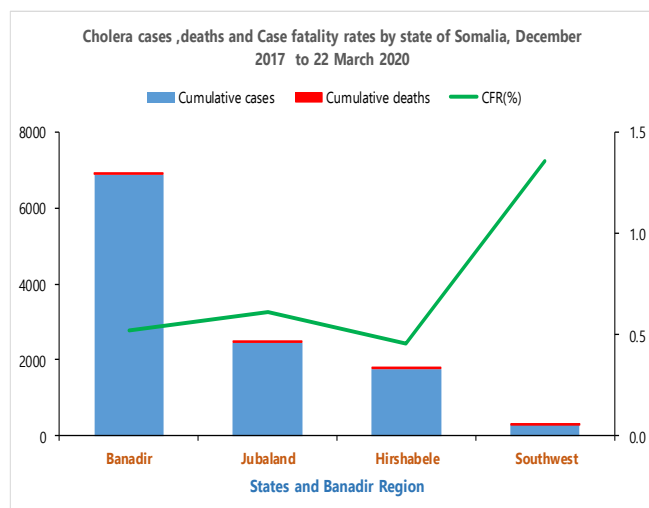


### Summary of statistics

- **180** new cases of cholera and **0** deaths were reported during week 12, of which **123 (68.3%)** were children under 5 years of age
- **12 251** cumulative cases including **60** deaths were reported since December 2017 when the outbreak began, of which **7 738 (63.1%)** were children under 5 years of age and **5 922 (48.3%)** cases were females
- **12 390** cumulative cases of cholera and five (**10**) deaths have been reported in 2020

Suspected cholera cases, attack rate, deaths and case-fatality rate by district (December 2017 to 22 March 2020)

State/region	District	Cases	Population	Deaths	CFR (%)	Attack Rate
Banadir	Abdul Aziz	26	47,332	1	3.8	55
	Bondere	42	109,840	0	0.0	38
	Dharkenly	1090	163,855	1	0.1	665
	Daynile	1356	93,977	12	0.9	1443
	Hamar Jabjab	376	95,296	2	0.5	395
	Hamar Weyn	91	100,088	0	0.0	91
	Hawal Wadag	273	118,585	1	0.4	230
	Heliwa	59	131,341	0	0.0	45
	Hodan	1491	251,045	2	0.1	594
	Kahda	174	112,130	1	0.6	155
	Karan	114	253,106	1	0.9	45
	Madina	1435	173,573	5	0.3	827
	Shangani	21	43,775	0	0.0	48
	Shibis	23	172,842	0	0.0	13
	Waberi	237	100,540	2	0.8	236
	Wardegly	272	128,159	2	0.7	212
Yaqshid	127	314,160	0	0.0	40	
Hirshabelle	Belet Weyne	904	222,251	6	0.7	407
	Bulo Burti	174	95,403	0	0.0	182
	Jalalaqsi	197	73861	1	0.5	267
	Jowhar	957	291,189	4	0.4	329
Jubbaland	Belet Hawa	117	108,876	0	0.0	107
	Kismayo	2,330	139,585	15	0.6	1669
	Badade	30	45,956	0	0.0	65
South West	Afgoi	153	263,633	0	0.0	58
	Brava	14	111,433	0	0.0	13
	Kurtunwarey	31	211,924	4	12.9	15
Marka	137	511,031	0	0.0	27	
<b>Total</b>		<b>12,251</b>	<b>4,484,786</b>	<b>60</b>	<b>0.5</b>	<b>273</b>



\* Case fatality rate >1% has been highlighted as red \* Banadir is not classified as a state