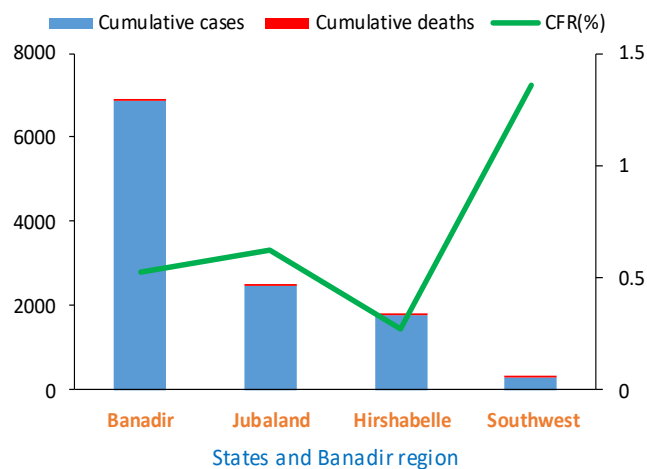


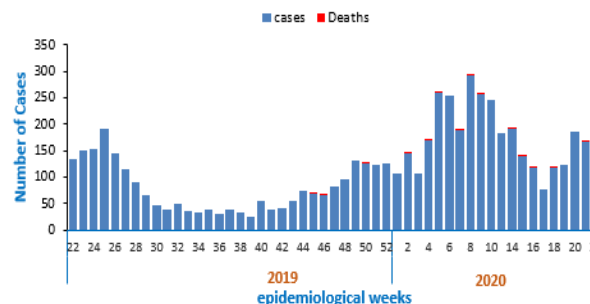
### Highlights

- During week 22 a total of 290 new cases of cholera and 5 death were reported from 15 districts of Banadir, Beletweyne district of Hiran region and Baidoa district. No case was reported from other areas
- Since December 2017, a total of 13 818 cumulative cases, including 72 deaths (CFR 0.5%), were reported from three (3) states of Somalia (Hirshabelle, Jubbaland and South West state) and Banadir region
- With a cumulative attack rate of 308 cases per 100 000 populations., Kismayo (Jubbaland) and Daynile (Banadir) districts are the most affected districts with an attack rate of 1 669 and 1 587 cases per 100,000 population.
- Though the overall case-fatality rate (CFR) was 0.5%, higher rates were observed in Abdilaziz, Baidoa and Kurtunwarey districts exceeding the WHO's threshold of <1% case fatality rate
- Of the 1 413 stool samples tested for culture since December 2017, 380 samples were tested positive for *Vibrio cholerae* serotype Ogawa
- Culture and sensitivity tests performed at the central public health laboratory in Mogadishu, show that the isolated *Vibrio cholerae*, O1, serotype Ogawa is sensitive to chloramphenicol and tetracycline but resistant to ampicillin and nalidixic acid

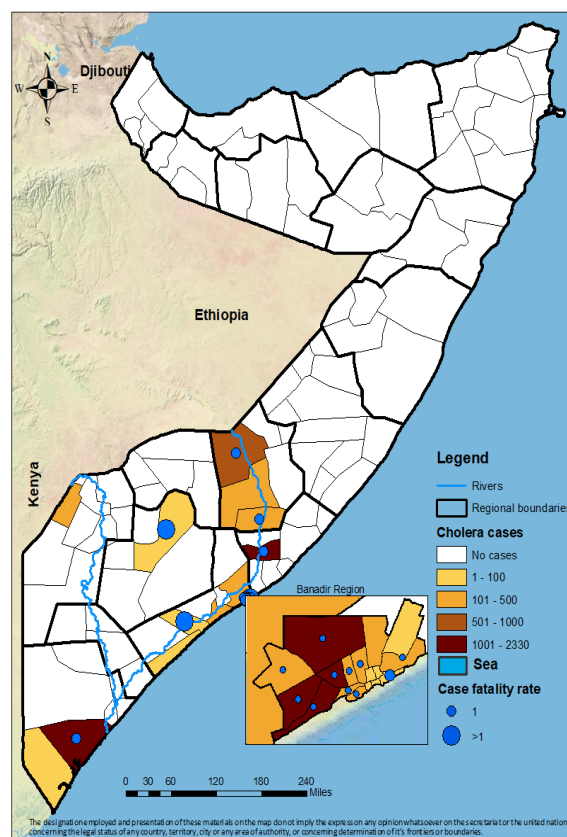
### Cholera cases ,deaths and Case fatality rates by state of Somalia, December 2017 to 31 May, 2020



### Trends of cholera cases in Somalia from 31 May, 2019 to 31 May, 2020



### Distribution of cholera cases from December 2017 to 31 May, 2020



### Summary of statistics

- 290** new cases of cholera and **5** death was reported during week **22**, of which **189 (65.17%)** were children under **5** years of age
- 13 818** cumulative cases including **72** deaths were reported since December 2017 when the outbreak began, of which **8 806 (63.72%)** were children under **5** years of age and **6 692 (48.42%)** cases were females
- 3 957** cumulative cases of cholera and twenty two (**22**) deaths have been reported in 2020

### Suspected cholera cases, attack rate, deaths and case-fatality rate by district (December 2017 to 31 May, 2020)

State/region	District	Cases	Population	Deaths	CFR (%)	Attack Rate
Banadir <sup>b</sup>	Abdul Aziz	31	47 332	1	3.2	65
	Bondere	55	109 840	0	0.0	50
	Dharkenly	1268	163 855	2	0.2	774
	Daynile	1594	93 977	14	0.9	1696
	Hamar Jabjab	457	95 296	2	0.4	480
	Hamar Weyn	97	100 088	0	0.0	97
	Hawal Wadag	316	118 585	1	0.3	266
	Heliwa	69	131 341	0	0.0	53
	Hodan	1683	251 045	3	0.2	670
	Kahda	238	112 130	2	0.8	212
	Karan	143	253 106	1	0.7	56
	Madina	1639	173 573	9	0.5	944
	Shangani	23	43 775	0	0.0	53
	Shibis	28	172 842	0	0.0	16
	Waberi	286	100 540	2	0.7	284
Wardegly	304	128 159	2	0.7	237	
Yaqshid	157	314 160	0	0.0	50	
Hirshabelle	Belet Weyne	989	222 251	6	0.6	445
	Bulo Burti	196	95 403	0	0.0	205
	Jalalaqsi	226	73 861	1	0.4	306
Jubbaland	Jowhar	1118	291 189	4	0.4	384
	Belet Hawa	120	108 876	0	0.0	110
	Kismayo	2,330	139 585	15	0.6	1669
South West	Badade	30	45 956	0	0.0	65
	Afgoi	153	263 633	0	0.0	58
	Brava	14	111 433	0	0.0	13
	Kurtunwaarey	31	211 924	4	12.9	15
	Marka	137	511 031	0	0.0	27
	Baidoa	86	360 041	3	3.5	24
<b>Total</b>		<b>13,818</b>	<b>4,484,786</b>	<b>72</b>	<b>0.5</b>	<b>308</b>

<sup>b</sup> Case fatality rate >1% has been highlighted as red \* Banadir is not classified as a state