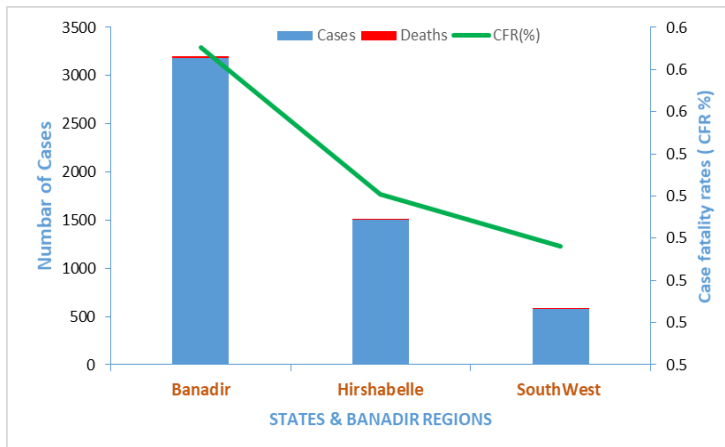


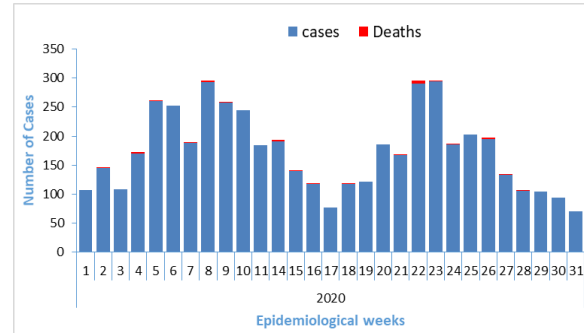
Highlights

- During week 31 a total of 70 new cases of cholera and no death was reported from 14 districts of Banadir, and Baidoa district of Bay region. No case was reported from other areas
- Since epidemiological week1 2020, a total of 5 341 cumulative cases, including 29 deaths (CFR 0.6%), were reported from two states of Somalia (Hirshabelle and South West state) and Banadir region
- with a cumulative attack rate of 148 cases per 100 000 populations. Daynile (Banadir region) Madina and districts are the most affected districts with an attack rate of 721 and 336 cases per 100 000 populations
- Though the overall case-fatality rate (CFR) was 0.6%, higher rates were observed in Hamarweyne, Wardegley and Daynile, exceeding the WHO's threshold of <1% case fatality rate
- Of the 482 stool samples tested for culture since Epidemiological week1 2020, 164 samples were tested positive for *Vibrio cholerae* serotype Inapa.
- Culture and sensitivity tests performed at the central public health laboratory in Mogadishu, show that the isolated *Vibrio cholerae*, O1, serotype Inapa is sensitive to chloramphenicol and tetracycline but resistant to ampicillin and nalidixic acid

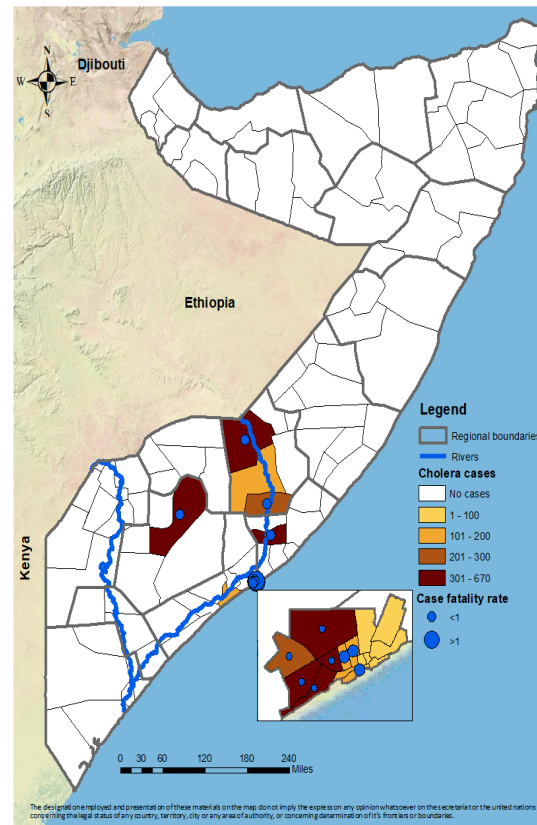
Cholera case, deaths, and Case fatality rates By state of Somalia, January to 2 August 2020



Trends of cholera cases in Somalia from January to 2 August 2020



Distribution of cholera cases from January to 2 August, 2020



Summary of statistics

70 new cases of cholera, and no death was reported during week 31 of which **45 (64.2%)** were children under 5 years of age

5 341 cumulative cases including **29** deaths were reported since epidemiological week 1 to 31. Since the beginning of the year of which **3 784 (70.8%)** were children under 5 years of age and **2 592 (48.53%)** cases were females

Suspected cholera cases, attack rate, deaths and case-fatality rate by district (January to 2 August, 2020)

State/region	District	Cases	Population	Deaths	CFR (%)	Attack Rate (per 100,000 population)
Banadir	Abdul Aziz	15	47 332	0	0.0	32
	Bondere	32	109 840	0	0.0	29
	Dharkenly	501	163 855	1	0.2	306
	Daynile	678	93 977	7	1.0	721
	Hamar Jabjab	147	95 296	0	0.0	154
	Hamar Weyn	31	100 088	1	3.2	31
	Hawl Wadag	125	118 585	0	0.0	105
	Heliwa	25	131 341	0	0.0	19
	Hodan	543	251 045	1	0.2	216
	Kahda	197	112 130	1	0.5	176
	Karan	67	253 106	0	0.0	26
	Madina	584	173 573	5	0.9	336
Hirshabelle state	Shangani	8	43 775	0	0.0	18
	Shibis	12	172 842	0	0.0	7
	Waberi	98	100 540	0	0.0	97
	Wardegley	100	128 159	2	2.0	78
	Yaqshid	63	314 160	0	0.0	20
	Belet Weyne	569	222 251	5	0.9	256
	Bulo Burti	160	95 403	0	0.0	168
South west state	Jalalaqsi	219	73 861	1	0.5	297
	Jowhar	560	291 189	2	0.4	192
	Merka	109	511 031	0	0.0	21
Baidoa	Baidoa	498	360041	3	0.6	138
	Total	5 341	3 603 379	29	0.5	148

* Case fatality rate >1% has been highlighted as red * Banadir is not classified as a state