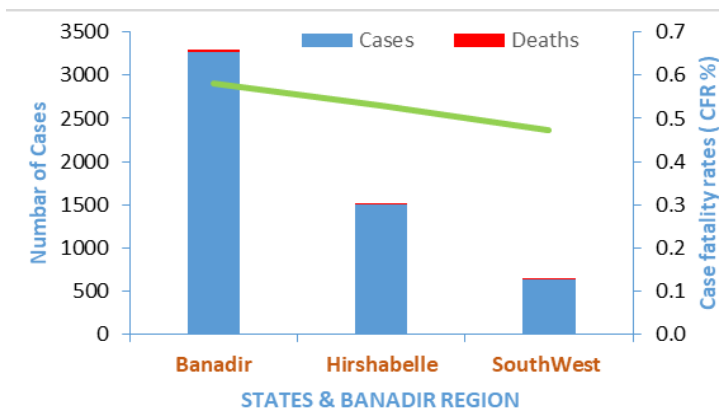


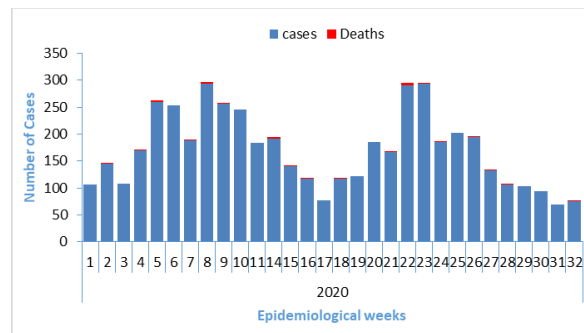
Highlights

- During week 32 a total of 76 new cases of cholera and 1 death was reported from 10 districts of Banadir, and Baidoa district of Bay region. No case was reported from other areas
- Since epidemiological week1 2020, a total of 5 417 cumulative cases, including 30 deaths (CFR 0.6%), were reported from two states of Somalia (Hirshabelle and South West state) and Banadir region
- with a cumulative attack rate of 150 cases per 100 000 populations. Daynile (Banadir region) Madina and districts are the most affected districts with an attack rate of 731 and 340 cases per 100 000 populations
- Though the overall case-fatality rate (CFR) was 0.6%, higher rates were observed in Hamarweyne, Wardegley and Daynile, exceeding the WHO's threshold of <1% case fatality rate
- Of the 489 stool samples tested for culture since Epidemiological week1 2020, 165 samples were tested positive for *Vibrio cholerae* serotype Inapa.
- Culture and sensitivity tests performed at the central public health laboratory in Mogadishu, show that the isolated *Vibrio cholerae*, O1, serotype Inapa is sensitive to chloramphenicol and tetracycline but resistant to ampicillin and nalidixic acid

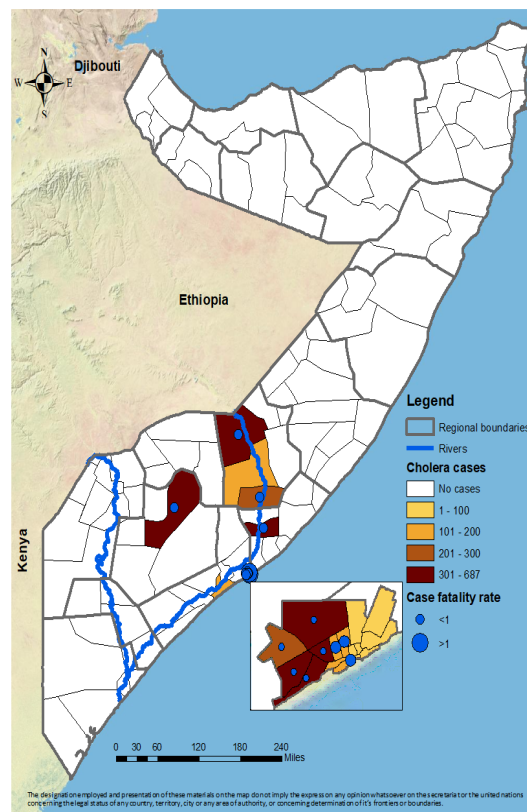
Cholera case, deaths, and Case fatality rates By state of Somalia, January to 9 August 2020



Trends of cholera cases in Somalia from January to 9 August 2020



Distribution of cholera cases from January to 9 August, 2020



Summary of statistics

76 new cases of cholera, and **1** death was reported during week **32** of which **44(57.8%)** were children under **5** years of age

5 417 cumulative cases including **30** deaths were reported since epidemiological week **1** to **32**. Since the beginning of the year of which **3 828 (70.6%)** were children under **5** years of age and **2 629 (48.5%)** cases were females

Suspected cholera cases, attack rate, deaths and case-fatality rate by district (January to 9 August, 2020)

State/region	District	Cases	Population	Deaths	CFR (%)	Attack Rate (per 100,000 population)
Banadir	Abdul Aziz	15	47 332	0	0.0	32
	Bondere	32	109 840	0	0.0	29
	Dharkenly	508	163 855	1	0.2	310
	Danyile	687	93 977	7	1.0	731
	Hamar Jabjab	151	95 296	0	0.0	158
	Hamar Weyn	31	100 088	1	3.2	31
	Hawl Wadag	131	118 585	1	0.8	110
	Heliwa	25	131 341	0	0.0	19
	Hodan	549	251 045	1	0.2	219
	Kahda	198	112 130	1	0.5	177
	Karan	67	253 106	0	0.0	26
	Madina	591	173 573	5	0.8	340
	Shangani	8	43 775	0	0.0	18
	Shibis	12	172 842	0	0.0	7
Waberi	103	100 540	0	0.0	102	
Wardegly	102	128 159	2	2.0	80	
Yaqshid	63	314 160	0	0.0	20	
Hirshabelle state	Belet Weyne	569	222 251	5	0.9	256
	Bulo Burti	160	95 403	0	0.0	168
	Jalalaqsi	219	73 861	1	0.5	297
	Jowhar	560	291 189	2	0.4	192
South west state	Merka	109	511 031	0	0.0	21
	Baidoa	527	360041	3	0.6	146
Total		5 417	3 603 379	30	0.6	150

* Case fatality rate >1% has been highlighted as red * Banadir is not classified as a state