

Djibouti



Tuberculosis

| High HIV burden |

Population 2010 (millions) <1

Estimates of burden * 2010	Number (thousands)	Rate (per 100 000 pop)
Mortality (excluding HIV)	0.63 (0.4–0.94)	70 (45–106)
Prevalence (incl HIV)	7.4 (3.1–12)	838 (348–1 399)
Incidence (incl HIV)	5.5 (4.5–6.6)	620 (510–741)
Incidence (HIV-positive)	0.62 (0.49–0.77)	70 (56–86)
Case detection, all forms (%)	76 (63–93)	

Case notifications 2010

New cases	(%) Retreatment cases	(%)
Smear-positive	1 181 (30)	Relapse 200 (91)
Smear-negative	538 (14)	Treatment after failure 11 (5)
Smear unknown	0 (0)	Treatment after default 8 (4)
Extrapulmonary	2 253 (57)	Other 0 (0)
Other	0 (0)	
Total new	3 972	Total retreatment 219
Total < 15 years	48	

Total new and relapse	4 172	(100% of total)
Total cases notified	4 191	

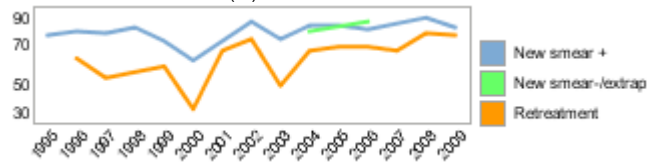
Drug regimens

Rifampicin used throughout treatment	Yes
% of patients treated with fixed-dose combinations (FDCs)	100
Paediatric formulations procured	Yes

Treatment success rate 2009 (%)

New smear-positive	79
New smear-negative/extrapulmonary	
Retreatment	75

Treatment success rate (%)



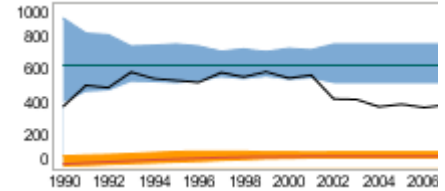
MDR-TB, Estimates among notified cases *

% of new TB cases with MDR-TB	0.90 (0.50–1.4)
% of retreatment TB cases with MDR-TB	14 (2.2–26)
Estimated MDR-TB cases among new pulmonary TB cases notified in 2010	15 (8.6–24)
Estimated MDR-TB cases among retreated pulmonary TB cases notified in 2010	30 (4.8–56)

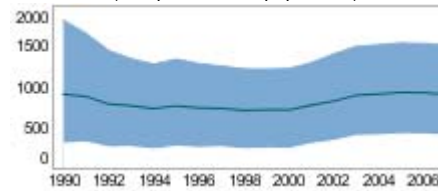
MDR-TB reported cases 2010	New	Retreat-ment	Total
Cases tested for MDR-TB			
% of notified tested for MDR-TB			
Confirmed cases of MDR-TB			
MDR-TB patients started treatment			7

Laboratories	2009	2010	2011
Smear (per 100 000 population)	1.8	1.8	1.8
Culture (per 5 million population)	5.7	0	5.5
DST (per 5 million population)	0	0	5.5

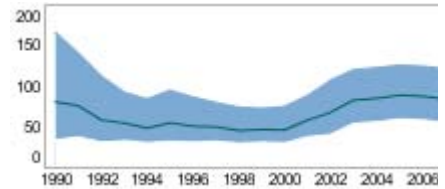
Incidence (HIV+TB in orange), notifications (black) (rates per 100 000 population)



Prevalence (rate per 100 000 population)



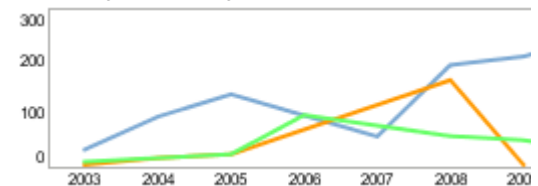
Mortality excluding HIV (rate per 100 000 population)



TB/HIV 2010

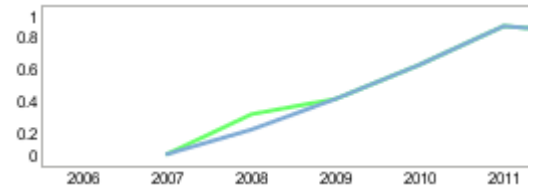
TB patients with known HIV status	
% of TB patients with known HIV status	
TB patients that are HIV-positive	
% of tested TB patients that are HIV-positive	
% HIV-positive TB patients started on CPT	
% HIV-positive TB patients started on ART	
HIV-positive people screened for TB	
HIV-positive people provided with IPT	

CPT (orange) and ART (green) for HIV-positive TB patients (



Financing	2011
Total budget (US\$ millions)	<1
Available funding (US\$ millions)	<1
% of budget funded	100
% available funding from domestic sources	0
% available funding from Global Fund	93
NTP Budget (blue) and available funding (green) (US\$ million)	

Second-line DST available	Outside country
National Reference Laboratory	Yes



* Ranges represent uncertainty intervals

Generated: August 28, 2011