

Iran (Islamic Republic of)

-DR/

Tuberculosis

Population 2010 (millions) 74

Estimates of burden * 2010	Number (thousands)	Rate (per 100 000 pop)
Mortality (excluding HIV)	1.3 (0.78–2.2)	1.8 (1.1–2.9)
Prevalence (incl HIV)	17 (6.1–30)	23 (8.3–40)
Incidence (incl HIV)	13 (10–15)	17 (14–21)
Incidence (HIV-positive)	0.44 (0.26–0.66)	0.59 (0.35–0.89)
Case detection, all forms (%)	80 (69–100)	

Case notifications 2010

New cases	(%) Retreatment cases	(%)	
Smear-positive	5 188 (52) Relapse	320 (42)	
Smear-negative	1 612 (16) Treatment after failure	166 (22)	
Smear unknown	373 (4) Treatment after default	40 (5)	
Extrapulmonary	2 869 (29) Other	234 (31)	
Other	0 (0)		
Total new	10 042	Total retreatment	760
Total < 15 years	352		

Total new and relapse	10 362	(96% of total)
Total cases notified	10 802	

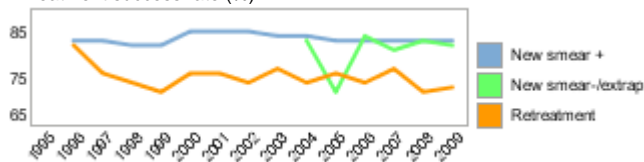
Drug regimens

Rifampicin used throughout treatment	Yes
% of patients treated with fixed-dose combinations (FDCs)	0
Paediatric formulations procured	Yes

Treatment success rate 2009 (%)

New smear-positive	83
New smear-negative/extrapulmonary	82
Retreatment	73

Treatment success rate (%)



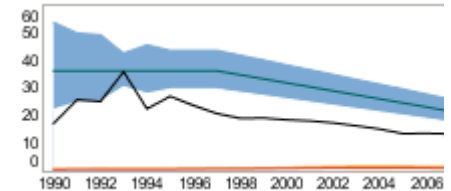
MDR-TB, Estimates among notified cases *

% of new TB cases with MDR-TB	5.0 (3.4–7.0)
% of retreatment TB cases with MDR-TB	48 (35–62)
Estimated MDR-TB cases among new pulmonary TB cases notified in 2010	360 (240–500)
Estimated MDR-TB cases among retreated pulmonary TB cases notified in 2010	370 (260–470)

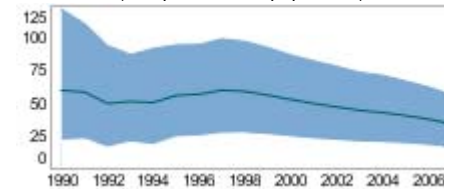
MDR-TB reported cases 2010	New	Retreat-ment	Total
Cases tested for MDR-TB	271	169	440
% of notified tested for MDR-TB	3	22	4
Confirmed cases of MDR-TB	17	41	58
MDR-TB patients started treatment			73

Laboratories	2009	2010	2011
Smear (per 100 000 population)	0.5	0.5	0.5
Culture (per 5 million population)	2.6	3.2	3.9
DST (per 5 million population)	0.1	0.1	0.3

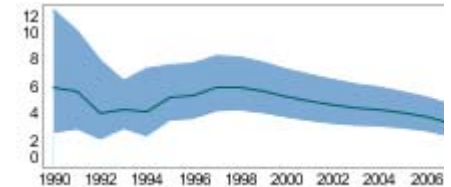
Incidence (HIV+TB in orange), notifications (black) (rates per 100 000 population)



Prevalence (rate per 100 000 population)



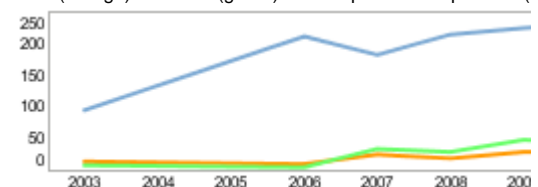
Mortality excluding HIV (rate per 100 000 population)



TB/HIV 2010

TB patients with known HIV status	
% of TB patients with known HIV status	
TB patients that are HIV-positive	
% of tested TB patients that are HIV-positive	
% HIV-positive TB patients started on CPT	
% HIV-positive TB patients started on ART	
HIV-positive people screened for TB	
HIV-positive people provided with IPT	

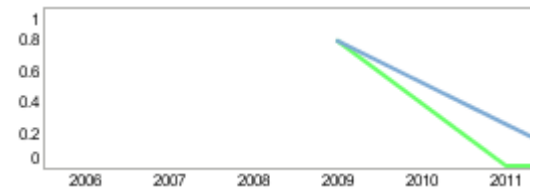
CPT (orange) and ART (green) for HIV-positive TB patients (



Financing 2011

Total budget (US\$ millions)	
Available funding (US\$ millions)	0
% of budget funded	
% available funding from domestic sources	
% available funding from Global Fund	
NTP Budget (blue) and available funding (green) (US\$ million)	

Second-line DST available	In country
National Reference Laboratory	Yes



* Ranges represent uncertainty intervals

Generated: August 28, 2011