

Jordan



Tuberculosis

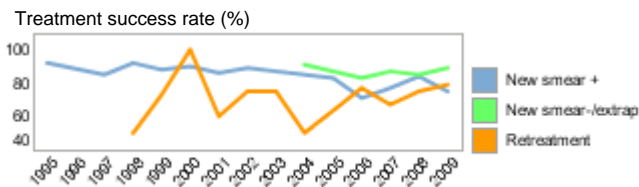
Population 2010 (millions)	6	
Estimates of burden * 2010	Number (thousands)	Rate (per 100 000 pop)
Mortality (excluding HIV)	0.044 (0.031–0.06)	0.7 (0.49–0.97)
Prevalence (incl HIV)	0.5 (0.21–0.82)	8 (3.4–13)
Incidence (incl HIV)	0.33 (0.29–0.38)	5.4 (4.7–6.2)
Incidence (HIV-positive)		
Case detection, all forms (%)	100 (89–120)	

Case notifications 2010			
New cases	(%)	Retreatment cases	(%)
Smear-positive	117 (35)	Relapse	2 (11)
Smear-negative	56 (17)	Treatment after failure	0 (0)
Smear unknown	13 (4)	Treatment after default	0 (0)
Extrapulmonary	150 (45)	Other	16 (89)
Other	0 (0)		
Total new	336	Total retreatment	18
Total < 15 years	51		

Total new and relapse	338	(95% of total)
Total cases notified	354	

Drug regimens	
Rifampicin used throughout treatment	Yes
% of patients treated with fixed-dose combinations (FDCs)	95
Paediatric formulations procured	Yes

Treatment success rate 2009 (%)	
New smear-positive	75
New smear-negative/extrapulmonary	89
Retreatment	79

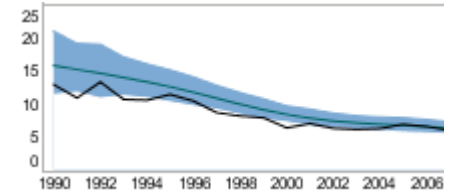


MDR-TB, Estimates among notified cases *	
% of new TB cases with MDR-TB	6.3 (2.4–13)
% of retreatment TB cases with MDR-TB	29 (3.7–71)
Estimated MDR-TB cases among new pulmonary TB cases notified in 2010	12 (4.5–25)
Estimated MDR-TB cases among retreated pulmonary TB cases notified in 2010	5.1 (0.67–13)

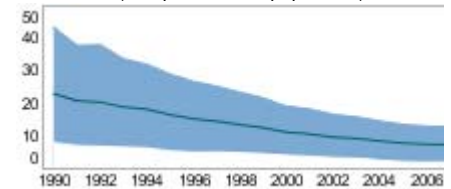
MDR-TB reported cases 2010	New	Retreat-ment	Total
Cases tested for MDR-TB	74	7	81
% of notified tested for MDR-TB	22	39	23
Confirmed cases of MDR-TB	5	3	10
MDR-TB patients started treatment			10

Laboratories	2009	2010	2011
Smear (per 100 000 population)	2.6	2.6	2.7
Culture (per 5 million population)	41.5	44.4	43.4
DST (per 5 million population)	0.8	0.8	0.8

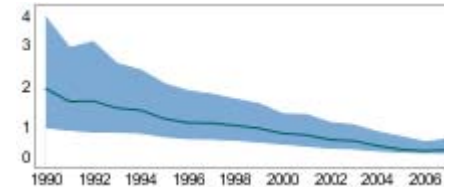
Incidence (HIV+TB in orange), notifications (black)
(rates per 100 000 population)



Prevalence (rate per 100 000 population)

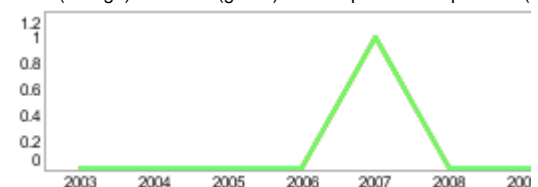


Mortality excluding HIV
(rate per 100 000 population)



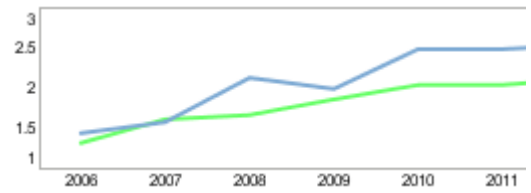
TB/HIV 2010

TB patients with known HIV status
% of TB patients with known HIV status
TB patients that are HIV-positive
% of tested TB patients that are HIV-positive
% HIV-positive TB patients started on CPT
% HIV-positive TB patients started on ART
HIV-positive people screened for TB
HIV-positive people provided with IPT
CPT (orange) and ART (green) for HIV-positive TB patients (



Financing	2011
Total budget (US\$ millions)	2
Available funding (US\$ millions)	2
% of budget funded	82
% available funding from domestic sources	81
% available funding from Global Fund	19
NTP Budget (blue) and available funding (green) (US\$ million)	

Second-line DST available	No
National Reference Laboratory	Yes



* Ranges represent uncertainty intervals

Generated: August 28, 2011