

Libyan Arab Jamahiriya



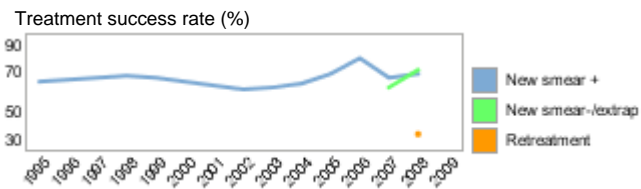
Tuberculosis

Population 2010 (millions)	6	
Estimates of burden * 2010	Number (thousands)	Rate (per 100 000 pop)
Mortality (excluding HIV)	0.25 (0.15–0.43)	4 (2.3–6.8)
Prevalence (incl HIV)	3.4 (1.1–6)	53 (17–94)
Incidence (incl HIV)	2.5 (2.1–3)	40 (33–48)
Incidence (HIV-positive)		
Case detection, all forms (%)		

Case notifications 2010		
New cases	(%)	Retreatment cases (%)
Smear-positive		Relapse
Smear-negative		Treatment after failure
Smear unknown		Treatment after default
Extrapulmonary		Other
Other		
Total new		Total retreatment
Total < 15 years		
Total new and relapse		
Total cases notified		

Drug regimens	
Rifampicin used throughout treatment	
% of patients treated with fixed-dose combinations (FDCs)	
Paediatric formulations procured	

Treatment success rate 2009 (%)
New smear-positive
New smear-negative/extrapulmonary
Retreatment

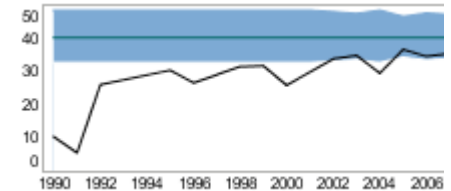


MDR-TB, Estimates among notified cases *	
% of new TB cases with MDR-TB	3.4 (0.80–6.0)
% of retreatment TB cases with MDR-TB	21 (7.3–34)
Estimated MDR-TB cases among new pulmonary TB cases notified in 2010	0 (0–0)
Estimated MDR-TB cases among retreated pulmonary TB cases notified in 2010	0 (0–0)

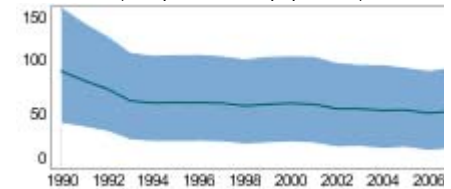
MDR-TB reported cases 2010	New	Retreat-ment	Total
Cases tested for MDR-TB			
% of notified tested for MDR-TB			
Confirmed cases of MDR-TB			
MDR-TB patients started treatment			

Laboratories	2009	2010	2011
Smear (per 100 000 population)	0.4	0.5	
Culture (per 5 million population)	2.4	22.8	
DST (per 5 million population)	1.6	1.6	

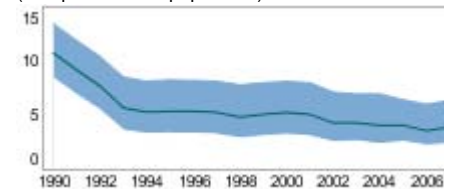
Incidence (HIV+TB in orange), notifications (black) (rates per 100 000 population)



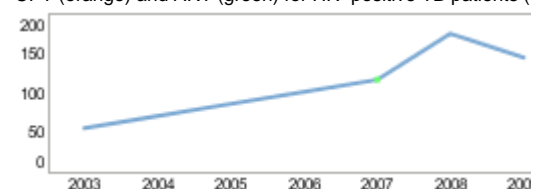
Prevalence (rate per 100 000 population)



Mortality excluding HIV (rate per 100 000 population)



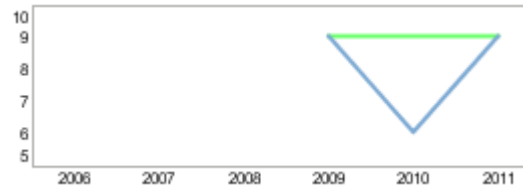
TB/HIV 2010
TB patients with known HIV status
% of TB patients with known HIV status
TB patients that are HIV-positive
% of tested TB patients that are HIV-positive
% HIV-positive TB patients started on CPT
% HIV-positive TB patients started on ART
HIV-positive people screened for TB
HIV-positive people provided with IPT
CPT (orange) and ART (green) for HIV-positive TB patients (



Financing	2011
Total budget (US\$ millions)	9
Available funding (US\$ millions)	9
% of budget funded	100
% available funding from domestic sources	100
% available funding from Global Fund	0
NTP Budget (blue) and available funding (green) (US\$ million)	

Second-line DST available

National Reference Laboratory



* Ranges represent uncertainty intervals

Generated: August 28, 2011