

Morocco



Tuberculosis

Population 2010 (millions) 32

Estimates of burden * 2010	Number (thousands)	Rate (per 100 000 pop)
Mortality (excluding HIV)	2 (1.4–3.1)	6.2 (4.4–9.7)
Prevalence (incl HIV)	34 (8.7–58)	105 (27–182)
Incidence (incl HIV)	29 (25–33)	91 (80–104)
Incidence (HIV-positive)	0.5 (0.31–0.74)	1.6 (0.96–2.3)
Case detection, all forms (%)	98 (86–110)	

Case notifications 2010

New cases	(%) Retreatment cases	(%)	
Smear-positive	12 239 (45) Relapse	1 216 (74)	
Smear-negative	2 174 (8) Treatment after failure	179 (11)	
Smear unknown	0 (0) Treatment after default	250 (15)	
Extrapulmonary	12 730 (47) Other	0 (0)	
Other	0 (0)		
Total new	27 143	Total retreatment	1 645
Total < 15 years	2 159		

Total new and relapse	28 359	(99% of total)
Total cases notified	28 788	

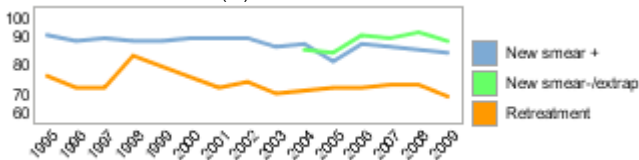
Drug regimens

Rifampicin used throughout treatment	Yes
% of patients treated with fixed-dose combinations (FDCs)	100
Paediatric formulations procured	Yes

Treatment success rate 2009 (%)

New smear-positive	84
New smear-negative/extrapulmonary	88
Retreatment	69

Treatment success rate (%)



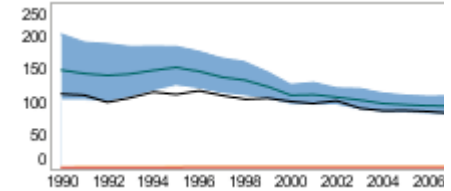
MDR-TB, Estimates among notified cases *

% of new TB cases with MDR-TB	0.50 (0.20–1.1)
% of retreatment TB cases with MDR-TB	12 (7.8–18)
Estimated MDR-TB cases among new pulmonary TB cases notified in 2010	72 (29–160)
Estimated MDR-TB cases among retreated pulmonary TB cases notified in 2010	200 (130–290)

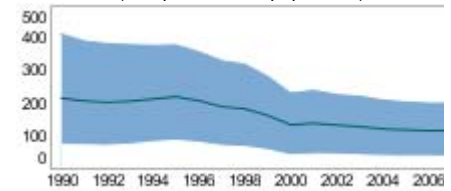
MDR-TB reported cases 2010	New	Retreat-ment	Total
Cases tested for MDR-TB	47	403	450
% of notified tested for MDR-TB	<1	24	2
Confirmed cases of MDR-TB	0	54	54
MDR-TB patients started treatment			263

Laboratories	2009	2010	2011
Smear (per 100 000 population)	0.5	0.5	0.5
Culture (per 5 million population)	2.2	2.5	2.5
DST (per 5 million population)	0.3	0.3	0.3

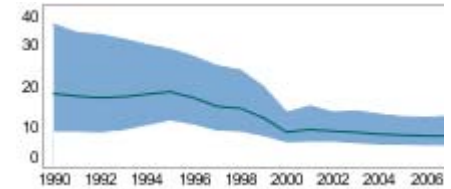
Incidence (HIV+TB in orange), notifications (black) (rates per 100 000 population)



Prevalence (rate per 100 000 population)

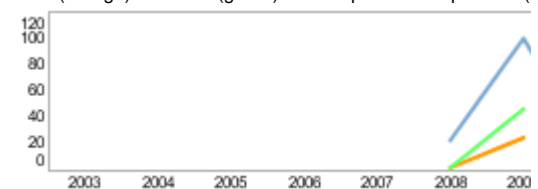


Mortality excluding HIV (rate per 100 000 population)



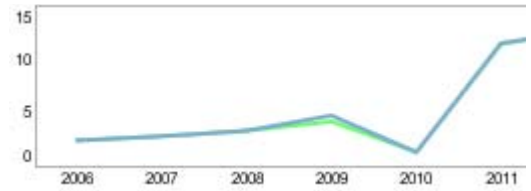
TB/HIV 2010

TB patients with known HIV status	
% of TB patients with known HIV status	
TB patients that are HIV-positive	
% of tested TB patients that are HIV-positive	
% HIV-positive TB patients started on CPT	
% HIV-positive TB patients started on ART	
HIV-positive people screened for TB	
HIV-positive people provided with IPT	
CPT (orange) and ART (green) for HIV-positive TB patients (



Financing	2011
Total budget (US\$ millions)	11
Available funding (US\$ millions)	11
% of budget funded	99
% available funding from domestic sources	92
% available funding from Global Fund	8
NTP Budget (blue) and available funding (green) (US\$ million)	

Second-line DST available	No
National Reference Laboratory	Yes



* Ranges represent uncertainty intervals

Generated: August 28, 2011