

## Oman



## Tuberculosis

Population 2010 (millions) 3

Estimates of burden * 2010	Number (thousands)	Rate (per 100 000 pop)
Mortality (excluding HIV)	0.028 (0.024–0.033)	1 (0.86–1.2)
Prevalence (incl HIV)	0.46 (0.15–0.78)	16 (5.3–28)
Incidence (incl HIV)	0.36 (0.32–0.41)	13 (12–15)
Incidence (HIV-positive)	<0.01 (<0.01–0.01)	0.16 (0.03–0.37)
Case detection, all forms (%)	86 (75–96)	

## Case notifications 2010

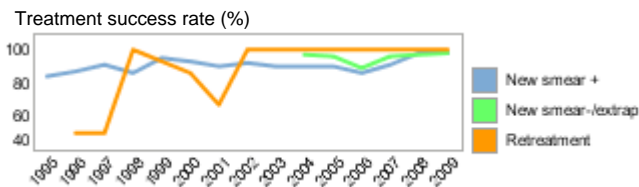
New cases	(%) Retreatment cases	(%)
Smear-positive	152 (50) Relapse	4 (44)
Smear-negative	28 (9) Treatment after failure	0 (0)
Smear unknown	0 (0) Treatment after default	0 (0)
Extrapulmonary	124 (41) Other	5 (56)
Other	0 (0)	
Total new	304	Total retreatment 9
Total < 15 years	14	

Total new and relapse	308	(98% of total)
Total cases notified	313	

## Drug regimens

Rifampicin used throughout treatment	Yes
% of patients treated with fixed-dose combinations (FDCs)	98
Paediatric formulations procured	No

Treatment success rate 2009 (%)	
New smear-positive	98
New smear-negative/extrapulmonary	98
Retreatment	100



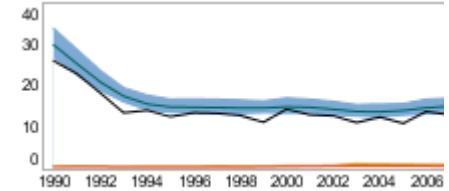
## MDR-TB, Estimates among notified cases \*

% of new TB cases with MDR-TB	0.0 (0.0–2.0)
% of retreatment TB cases with MDR-TB	13 (0.30–53)
Estimated MDR-TB cases among new pulmonary TB cases notified in 2010	0 (0–3.6)
Estimated MDR-TB cases among retreated pulmonary TB cases notified in 2010	1.1 (0.027–4.7)

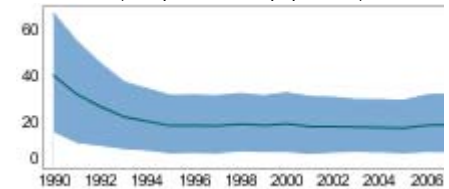
MDR-TB reported cases 2010	New	Retreat-ment	Total
Cases tested for MDR-TB	185	8	193
% of notified tested for MDR-TB	61	89	62
Confirmed cases of MDR-TB	0	1	1
MDR-TB patients started treatment			1

Laboratories	2009	2010	2011
Smear (per 100 000 population)	7.0	8.9	8.6
Culture (per 5 million population)	18.4	18.0	17.6
DST (per 5 million population)	1.8	1.8	1.8

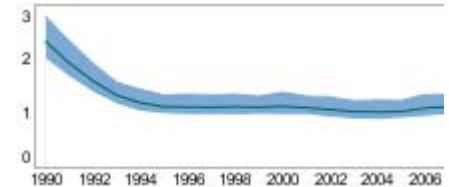
Incidence (HIV+TB in orange), notifications (black) (rates per 100 000 population)



Prevalence (rate per 100 000 population)



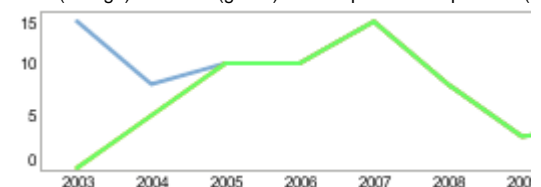
Mortality excluding HIV (rate per 100 000 population)



## TB/HIV 2010

TB patients with known HIV status	
% of TB patients with known HIV status	
TB patients that are HIV-positive	
% of tested TB patients that are HIV-positive	
% HIV-positive TB patients started on CPT	
% HIV-positive TB patients started on ART	
HIV-positive people screened for TB	
HIV-positive people provided with IPT	

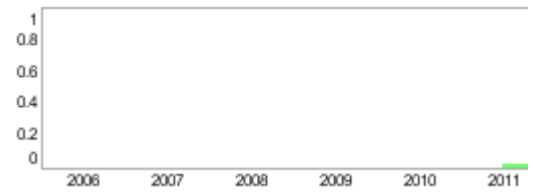
CPT (orange) and ART (green) for HIV-positive TB patients (



## Financing 2011

Total budget (US\$ millions)	
Available funding (US\$ millions)	0
% of budget funded	
% available funding from domestic sources	
% available funding from Global Fund	
NTP Budget (blue) and available funding (green) (US\$ million)	

Second-line DST available	In country
National Reference Laboratory	Yes



\* Ranges represent uncertainty intervals

Generated: August 28, 2011