

Pakistan



| High TB burden | High MDR-TB burden |

Population 2010 (millions) 174

Estimates of burden * 2010	Number (thousands)	Rate (per 100 000 pop)
Mortality (excluding HIV)	58 (38–84)	34 (22–48)
Prevalence (incl HIV)	630 (270–1 100)	363 (154–606)
Incidence (incl HIV)	400 (330–480)	231 (189–277)
Incidence (HIV-positive)	1.2 (0.67–1.9)	0.69 (0.39–1.1)
Case detection, all forms (%)	65 (54–79)	

Case notifications 2010

New cases	(%) Retreatment cases	(%)
Smear-positive	104 263 (41) Relapse	5 870 (54)
Smear-negative	105 623 (41) Treatment after failure	1 003 (9)
Smear unknown	0 (0) Treatment after default	1 527 (14)
Extrapulmonary	45 443 (18) Other	2 525 (23)
Other	0 (0)	
Total new	255 329	Total retreatment 10 925
Total < 15 years	24 474	

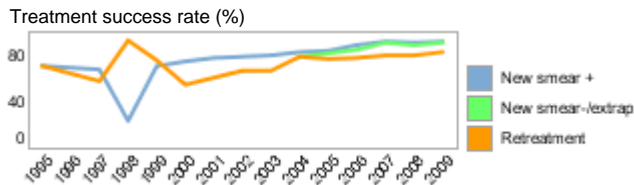
Total new and relapse	261 199	(97% of total)
Total cases notified	269 290	

Drug regimens

Rifampicin used throughout treatment	No
% of patients treated with fixed-dose combinations (FDCs)	100
Paediatric formulations procured	Yes

Treatment success rate 2009 (%)

New smear-positive	91
New smear-negative/extrapulmonary	90
Retreatment	82



MDR-TB, Estimates among notified cases *

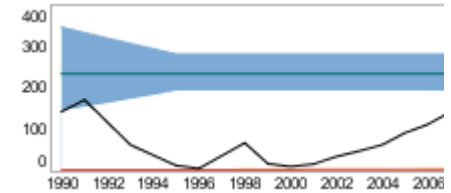
% of new TB cases with MDR-TB	3.4 (0.80–6.0)
% of retreatment TB cases with MDR-TB	21 (7.3–34)
Estimated MDR-TB cases among new pulmonary TB cases notified in 2010	7 100 (1 700–13 000)
Estimated MDR-TB cases among retreated pulmonary TB cases notified in 2010	2 300 (800–3 700)

MDR-TB reported cases 2010	New	Retreat-ment	Total
Cases tested for MDR-TB	9	306	444
% of notified tested for MDR-TB	<1	3	<1
Confirmed cases of MDR-TB	9	306	
MDR-TB patients started treatment			424

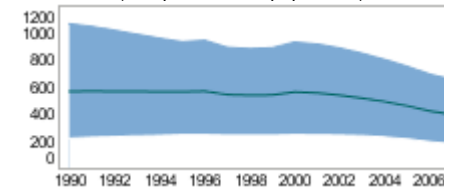
Laboratories	2009	2010	2011
Smear (per 100 000 population)	0.7	0.7	0.7
Culture (per 5 million population)	0.4	0.4	0.4
DST (per 5 million population)	0.3	0.3	0.3

Tuberculosis

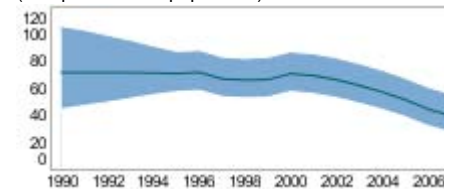
Incidence (HIV+TB in orange), notifications (black) (rates per 100 000 population)



Prevalence (rate per 100 000 population)



Mortality excluding HIV (rate per 100 000 population)



TB/HIV 2010

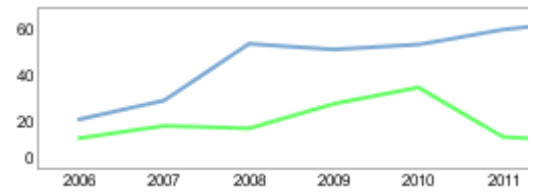
TB patients with known HIV status	
% of TB patients with known HIV status	
TB patients that are HIV-positive	
% of tested TB patients that are HIV-positive	
% HIV-positive TB patients started on CPT	
% HIV-positive TB patients started on ART	
HIV-positive people screened for TB	
HIV-positive people provided with IPT	

CPT (orange) and ART (green) for HIV-positive TB patients (



Financing	2011
Total budget (US\$ millions)	60
Available funding (US\$ millions)	13
% of budget funded	22
% available funding from domestic sources	34
% available funding from Global Fund	41
NTP Budget (blue) and available funding (green) (US\$ million)	

Second-line DST available	In country
National Reference Laboratory	Yes



* Ranges represent uncertainty intervals

Generated: August 28, 2011