

Somalia



| High HIV burden |

Population 2010 (millions) 9

Estimates of burden * 2010	Number (thousands)	Rate (per 100 000 pop)
Mortality (excluding HIV)	5.2 (3.9–6.8)	56 (42–72)
Prevalence (incl HIV)	48 (23–78)	514 (243–833)
Incidence (incl HIV)	27 (22–32)	286 (235–342)
Incidence (HIV-positive)	2.1 (1.6–2.7)	23 (18–29)
Case detection, all forms (%)	38 (32–46)	

Case notifications 2010

New cases	(%) Retreatment cases	(%)
Smear-positive	5 225 (54) Relapse	375 (53)
Smear-negative	1 587 (16) Treatment after failure	79 (11)
Smear unknown	1 067 (11) Treatment after default	27 (4)
Extrapulmonary	1 885 (19) Other	224 (32)
Other	0 (0)	
Total new	9 764	Total retreatment 705
Total < 15 years	200	

Total new and relapse	10 139	(97% of total)
Total cases notified	10 469	

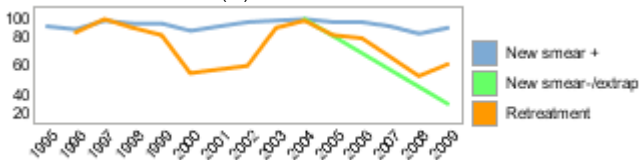
Drug regimens

Rifampicin used throughout treatment	Yes
% of patients treated with fixed-dose combinations (FDCs)	100
Paediatric formulations procured	Yes

Treatment success rate 2009 (%)

New smear-positive	85
New smear-negative/extrapulmonary	33
Retreatment	60

Treatment success rate (%)



MDR-TB, Estimates among notified cases *

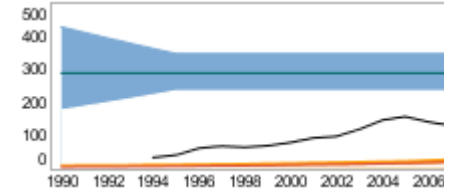
% of new TB cases with MDR-TB	0.90 (0.50–1.4)
% of retreatment TB cases with MDR-TB	14 (2.2–26)
Estimated MDR-TB cases among new pulmonary TB cases notified in 2010	71 (39–110)
Estimated MDR-TB cases among retreated pulmonary TB cases notified in 2010	98 (16–180)

MDR-TB reported cases 2010	New	Retreat-ment	Total
Cases tested for MDR-TB	488	79	567
% of notified tested for MDR-TB	5	11	5
Confirmed cases of MDR-TB	27	30	57
MDR-TB patients started treatment			0

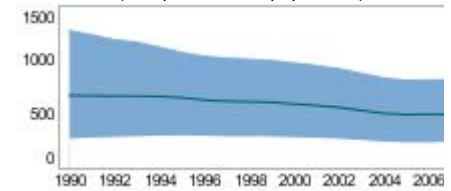
Laboratories	2009	2010	2011
Smear (per 100 000 population)	0.6	0.7	0.7
Culture (per 5 million population)	0	0	0.5
DST (per 5 million population)	0	0	0

Tuberculosis

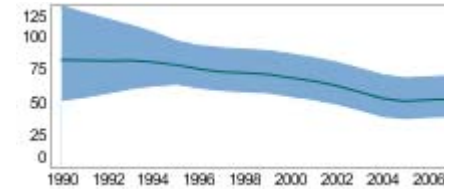
Incidence (HIV+TB in orange), notifications (black) (rates per 100 000 population)



Prevalence (rate per 100 000 population)

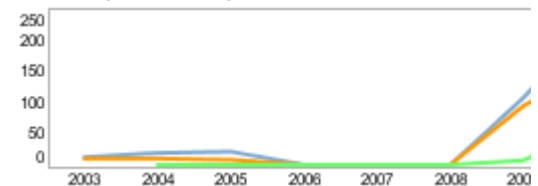


Mortality excluding HIV (rate per 100 000 population)



TB/HIV 2010

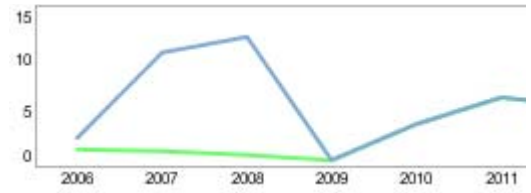
TB patients with known HIV status	
% of TB patients with known HIV status	
TB patients that are HIV-positive	
% of tested TB patients that are HIV-positive	
% HIV-positive TB patients started on CPT	
% HIV-positive TB patients started on ART	
HIV-positive people screened for TB	
HIV-positive people provided with IPT	
CPT (orange) and ART (green) for HIV-positive TB patients (



Financing

Financing	2011
Total budget (US\$ millions)	6
Available funding (US\$ millions)	6
% of budget funded	100
% available funding from domestic sources	0
% available funding from Global Fund	100
NTP Budget (blue) and available funding (green) (US\$ million)	

Second-line DST available	Outside country
National Reference Laboratory	No



* Ranges represent uncertainty intervals

Generated: August 28, 2011