

Sudan



Tuberculosis

| High HIV burden |

Population 2010 (millions) 44

Estimates of burden * 2010	Number (thousands)	Rate (per 100 000 pop)
Mortality (excluding HIV)	8.3 (5.9–11)	19 (13–26)
Prevalence (incl HIV)	82 (38–130)	188 (88–306)
Incidence (incl HIV)	52 (43–62)	119 (98–142)
Incidence (HIV-positive)	7.1 (4.7–9.9)	16 (11–23)
Case detection, all forms (%)	50 (42–61)	

Case notifications 2010

New cases	(%) Retreatment cases	(%)	
Smear-positive	9 958 (39) Relapse	812 (42)	
Smear-negative	7 250 (29) Treatment after failure	178 (9)	
Smear unknown	1 894 (7) Treatment after default	691 (36)	
Extrapulmonary	6 217 (25) Other	241 (13)	
Other			
Total new	25 319	Total retreatment	1 922
Total < 15 years	404		

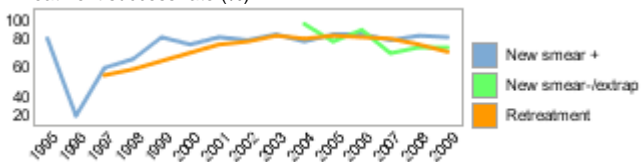
Total new and relapse	26 131	(96% of total)
Total cases notified	27 241	

Drug regimens

Rifampicin used throughout treatment	Yes
% of patients treated with fixed-dose combinations (FDCs)	10
Paediatric formulations procured	Yes

Treatment success rate 2009 (%)	
New smear-positive	80
New smear-negative/extrapulmonary	73
Retreatment	70

Treatment success rate (%)



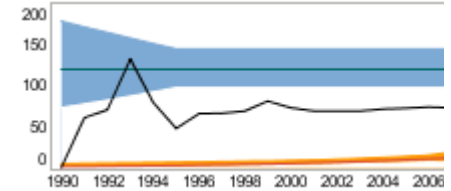
MDR-TB, Estimates among notified cases *

% of new TB cases with MDR-TB	0.90 (0.50–1.4)
% of retreatment TB cases with MDR-TB	14 (2.2–26)
Estimated MDR-TB cases among new pulmonary TB cases notified in 2010	170 (96–270)
Estimated MDR-TB cases among retreated pulmonary TB cases notified in 2010	270 (42–490)

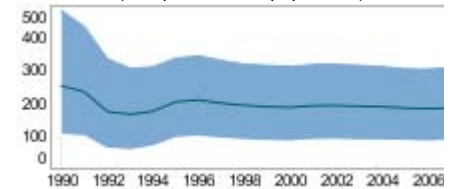
MDR-TB reported cases 2010	New	Retreat-ment	Total
Cases tested for MDR-TB			
% of notified tested for MDR-TB			
Confirmed cases of MDR-TB			62
MDR-TB patients started treatment			59

Laboratories	2009	2010	2011
Smear (per 100 000 population)	0.9	0.9	
Culture (per 5 million population)	0.1	0.1	
DST (per 5 million population)	0.1	0.1	

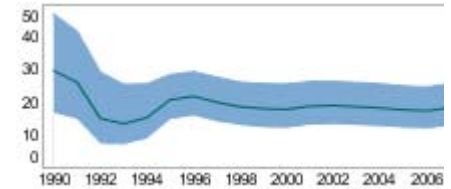
Incidence (HIV+TB in orange), notifications (black) (rates per 100 000 population)



Prevalence (rate per 100 000 population)



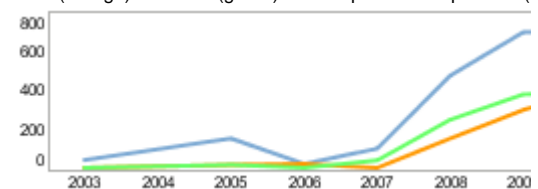
Mortality excluding HIV (rate per 100 000 population)



TB/HIV 2010

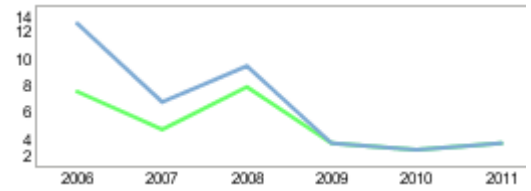
TB patients with known HIV status	
% of TB patients with known HIV status	
TB patients that are HIV-positive	
% of tested TB patients that are HIV-positive	
% HIV-positive TB patients started on CPT	
% HIV-positive TB patients started on ART	
HIV-positive people screened for TB	
HIV-positive people provided with IPT	

CPT (orange) and ART (green) for HIV-positive TB patients (



Financing	2011
Total budget (US\$ millions)	4
Available funding (US\$ millions)	4
% of budget funded	100
% available funding from domestic sources	39
% available funding from Global Fund	58
NTP Budget (blue) and available funding (green) (US\$ million)	

Second-line DST available	Outside country
National Reference Laboratory	Yes



* Ranges represent uncertainty intervals

Generated: August 28, 2011