

Syrian Arab Republic



Tuberculosis

Population 2010 (millions) 20

Estimates of burden * 2010	Number (thousands)	Rate (per 100 000 pop)
Mortality (excluding HIV)	0.28 (0.19–0.49)	1.4 (0.95–2.4)
Prevalence (incl HIV)	4.7 (1.1–8.3)	23 (5.6–41)
Incidence (incl HIV)	4.1 (3.3–4.8)	20 (16–24)
Incidence (HIV-positive)		
Case detection, all forms (%)	89 (76–110)	

Case notifications 2010

New cases	(%)	Retreatment cases	(%)
Smear-positive	1 122 (31)	Relapse	52 (49)
Smear-negative	453 (13)	Treatment after failure	13 (12)
Smear unknown	91 (3)	Treatment after default	10 (9)
Extrapulmonary	1 948 (54)	Other	31 (29)
Other	0 (0)		
Total new	3 614	Total retreatment	106
Total < 15 years	421		

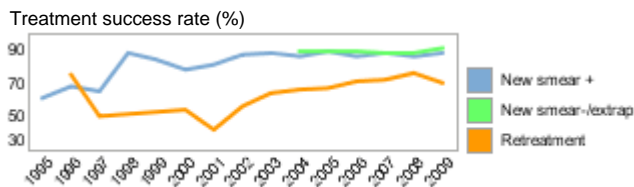
Total new and relapse	3 666	(96% of total)
Total cases notified	3 827	

Drug regimens

Rifampicin used throughout treatment	Yes
% of patients treated with fixed-dose combinations (FDCs)	75
Paediatric formulations procured	No

Treatment success rate 2009 (%)

New smear-positive	88
New smear-negative/extrapulmonary	91
Retreatment	70



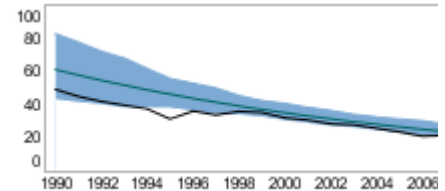
MDR-TB, Estimates among notified cases *

% of new TB cases with MDR-TB	6.2 (3.9–9.3)
% of retreatment TB cases with MDR-TB	26 (15–40)
Estimated MDR-TB cases among new pulmonary TB cases notified in 2010	100 (65–150)
Estimated MDR-TB cases among retreated pulmonary TB cases notified in 2010	27 (16–42)

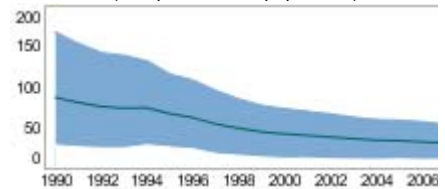
MDR-TB reported cases 2010	New	Retreat-ment	Total
Cases tested for MDR-TB	63	12	75
% of notified tested for MDR-TB	2	11	2
Confirmed cases of MDR-TB	13	12	25
MDR-TB patients started treatment			13

Laboratories	2009	2010	2011
Smear (per 100 000 population)	2.8	2.7	2.7
Culture (per 5 million population)	0.2	1.0	1.0
DST (per 5 million population)	0.2	0.2	1.2

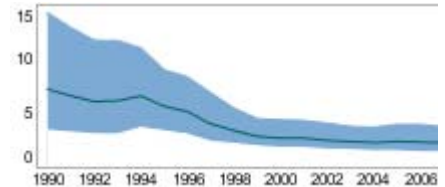
Incidence (HIV+TB in orange), notifications (black) (rates per 100 000 population)



Prevalence (rate per 100 000 population)



Mortality excluding HIV (rate per 100 000 population)



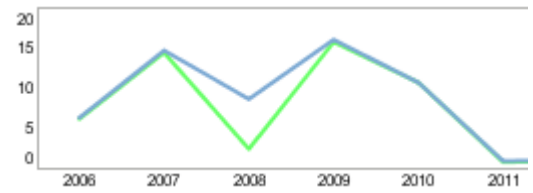
TB/HIV 2010

TB patients with known HIV status	
% of TB patients with known HIV status	
TB patients that are HIV-positive	
% of tested TB patients that are HIV-positive	
% HIV-positive TB patients started on CPT	
% HIV-positive TB patients started on ART	
HIV-positive people screened for TB	
HIV-positive people provided with IPT	
CPT (orange) and ART (green) for HIV-positive TB patients (



Financing	2011
Total budget (US\$ millions)	<1
Available funding (US\$ millions)	<1
% of budget funded	85
% available funding from domestic sources	39
% available funding from Global Fund	61
NTP Budget (blue) and available funding (green) (US\$ million)	

Second-line DST available	In country
National Reference Laboratory	Yes



* Ranges represent uncertainty intervals

Generated: August 28, 2011