

Tunisia



Tuberculosis

Population 2010 (millions) 10

Estimates of burden * 2010	Number (thousands)	Rate (per 100 000 pop)
Mortality (excluding HIV)	0.23 (0.15–0.35)	2.2 (1.5–3.3)
Prevalence (incl HIV)	3.3 (1.1–5.6)	31 (10–53)
Incidence (incl HIV)	2.6 (2.3–2.9)	25 (22–28)
Incidence (HIV-positive)	0.022 (0.012–0.035)	0.21 (0.11–0.33)
Case detection, all forms (%)	91 (82–100)	

Case notifications 2010

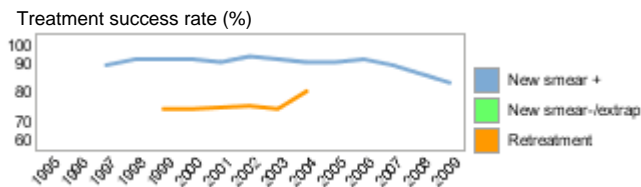
New cases	(%) Retreatment cases	(%)	
Smear-positive	1 091 (47) Relapse	36 (100)	
Smear-negative	151 (6) Treatment after failure		
Smear unknown	Treatment after default		
Extrapulmonary	1 090 (47) Other		
Other			
Total new	2 332	Total retreatment	36
Total < 15 years	13		

Total new and relapse	2 368	(100% of total)
Total cases notified	2 368	

Drug regimens

Rifampicin used throughout treatment	Yes
% of patients treated with fixed-dose combinations (FDCs)	80
Paediatric formulations procured	Yes

Treatment success rate 2009 (%)	
New smear-positive	83
New smear-negative/extrapulmonary	
Retreatment	



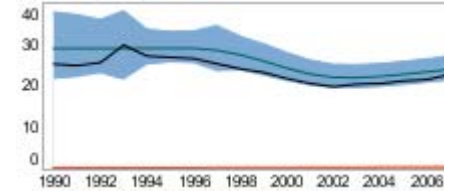
MDR-TB, Estimates among notified cases *

% of new TB cases with MDR-TB	3.4 (0.80–6.0)
% of retreatment TB cases with MDR-TB	21 (7.3–34)
Estimated MDR-TB cases among new pulmonary TB cases notified in 2010	42 (9.9–75)
Estimated MDR-TB cases among retreated pulmonary TB cases notified in 2010	7.4 (2.6–12)

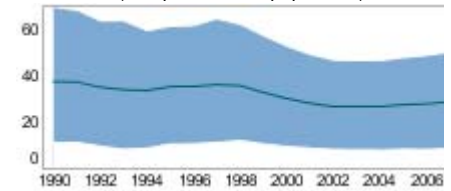
MDR-TB reported cases 2010	New	Retreat-ment	Total
Cases tested for MDR-TB	6	6	12
% of notified tested for MDR-TB	<1	17	<1
Confirmed cases of MDR-TB	6	6	12
MDR-TB patients started treatment			12

Laboratories	2009	2010	2011
Smear (per 100 000 population)	0.6	0.6	
Culture (per 5 million population)	3.4	5.2	
DST (per 5 million population)	2.4	2.4	

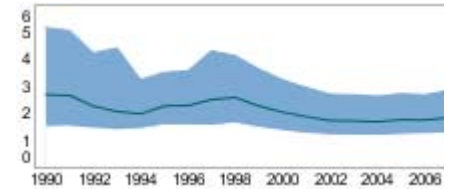
Incidence (HIV+TB in orange), notifications (black) (rates per 100 000 population)



Prevalence (rate per 100 000 population)

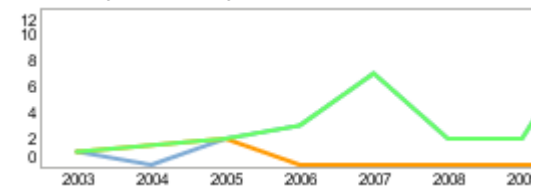


Mortality excluding HIV (rate per 100 000 population)



TB/HIV 2010

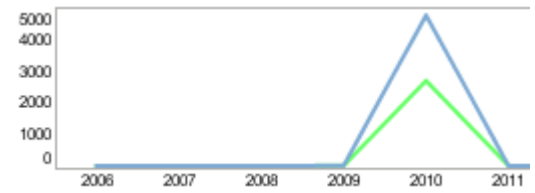
TB patients with known HIV status	
% of TB patients with known HIV status	
TB patients that are HIV-positive	
% of tested TB patients that are HIV-positive	
% HIV-positive TB patients started on CPT	
% HIV-positive TB patients started on ART	
HIV-positive people screened for TB	
HIV-positive people provided with IPT	
CPT (orange) and ART (green) for HIV-positive TB patients (



Financing	2011
Total budget (US\$ millions)	<1
Available funding (US\$ millions)	<1
% of budget funded	106
% available funding from domestic sources	94
% available funding from Global Fund	6
NTP Budget (blue) and available funding (green) (US\$ million)	

Second-line DST available

National Reference Laboratory



* Ranges represent uncertainty intervals

Generated: August 28, 2011