

United Arab Emirates



Tuberculosis

Population 2010 (millions) 8

Estimates of burden * 2010	Number (thousands)	Rate (per 100 000 pop)
Mortality (excluding HIV)	0.023 (0.016–0.031)	0.3 (0.21–0.42)
Prevalence (incl HIV)	0.47 (0.2–0.84)	6.2 (2.7–11)
Incidence (incl HIV)	0.23 (0.16–0.31)	3.1 (2.1–4.2)
Incidence (HIV-positive)	<0.01 (<0.01–0.013)	0.05 (0–0.17)
Case detection, all forms (%)	57 (42–82)	

Case notifications 2010

New cases	(%) Retreatment cases	(%)
Smear-positive	56 (43) Relapse	0 (0)
Smear-negative	28 (21) Treatment after failure	0 (0)
Smear unknown	0 (0) Treatment after default	1 (100)
Extrapulmonary	47 (36) Other	0 (0)
Other	0 (0)	
Total new	131	Total retreatment 1
Total < 15 years	18	

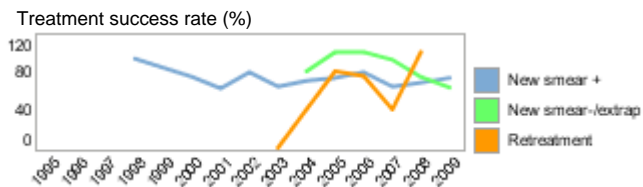
Total new and relapse	131	(99% of total)
Total cases notified	132	

Drug regimens

Rifampicin used throughout treatment	Yes
% of patients treated with fixed-dose combinations (FDCs)	0
Paediatric formulations procured	No

Treatment success rate 2009 (%)

New smear-positive	73
New smear-negative/extrapulmonary	63
Retreatment	



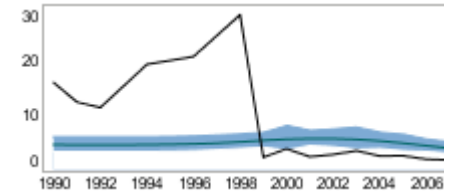
MDR-TB, Estimates among notified cases *

% of new TB cases with MDR-TB	1.2 (0.70–1.6)
% of retreatment TB cases with MDR-TB	9.0 (5.6–12)
Estimated MDR-TB cases among new pulmonary TB cases notified in 2010	1 (0.59–1.3)
Estimated MDR-TB cases among retreated pulmonary TB cases notified in 2010	0.09 (0.056–0.12)

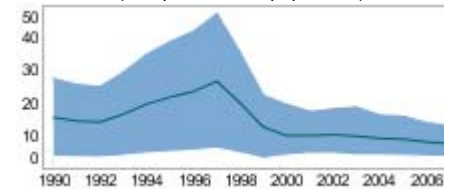
MDR-TB reported cases 2010	New	Retreat-ment	Total
Cases tested for MDR-TB			
% of notified tested for MDR-TB			
Confirmed cases of MDR-TB			0
MDR-TB patients started treatment			0

Laboratories	2009	2010	2011
Smear (per 100 000 population)		0.3	
Culture (per 5 million population)		2.2	
DST (per 5 million population)		0	

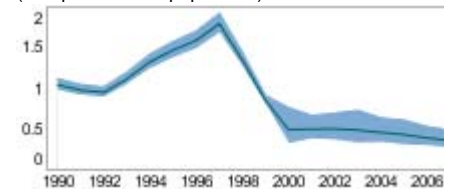
Incidence (HIV+TB in orange), notifications (black) (rates per 100 000 population)



Prevalence (rate per 100 000 population)

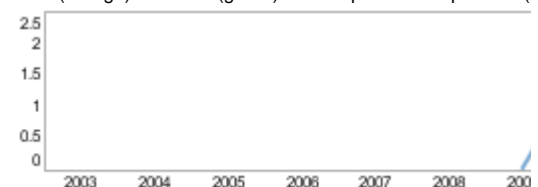


Mortality excluding HIV (rate per 100 000 population)



TB/HIV 2010

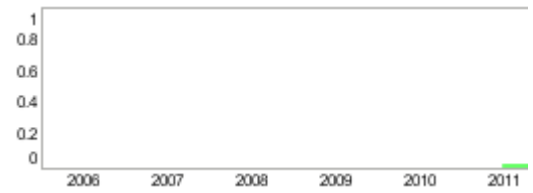
TB patients with known HIV status	
% of TB patients with known HIV status	
TB patients that are HIV-positive	
% of tested TB patients that are HIV-positive	
% HIV-positive TB patients started on CPT	
% HIV-positive TB patients started on ART	
HIV-positive people screened for TB	
HIV-positive people provided with IPT	
CPT (orange) and ART (green) for HIV-positive TB patients (



Financing 2011

Total budget (US\$ millions)	
Available funding (US\$ millions)	0
% of budget funded	
% available funding from domestic sources	
% available funding from Global Fund	
NTP Budget (blue) and available funding (green) (US\$ million)	

Second-line DST available	No
National Reference Laboratory	No



* Ranges represent uncertainty intervals

Generated: August 28, 2011