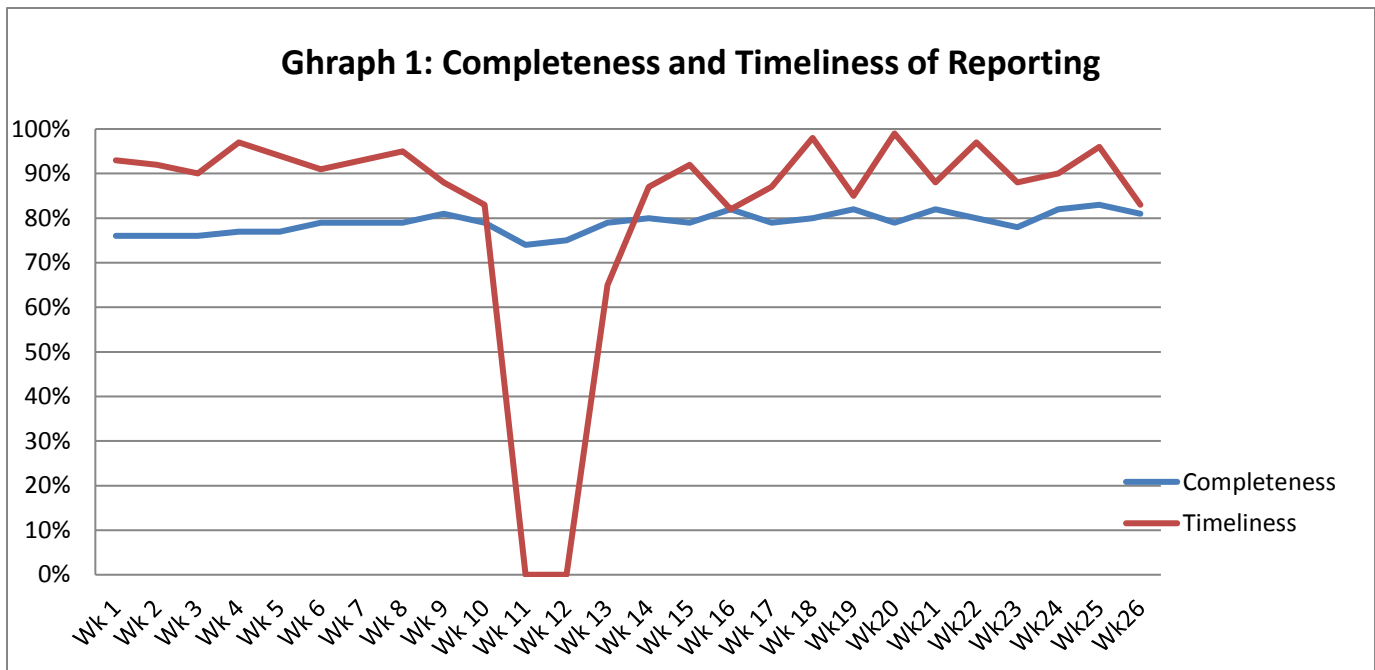


**Highlights:**

- ❖ A notification on increase of SM cases in Mabrouka camp in Hasska governorate.
- ❖ The increase of suspected Typhoid cases has continued this week; in week 26 numbers of probable cases are 57 cases.

**❖ Completeness & Timeliness of Reporting**

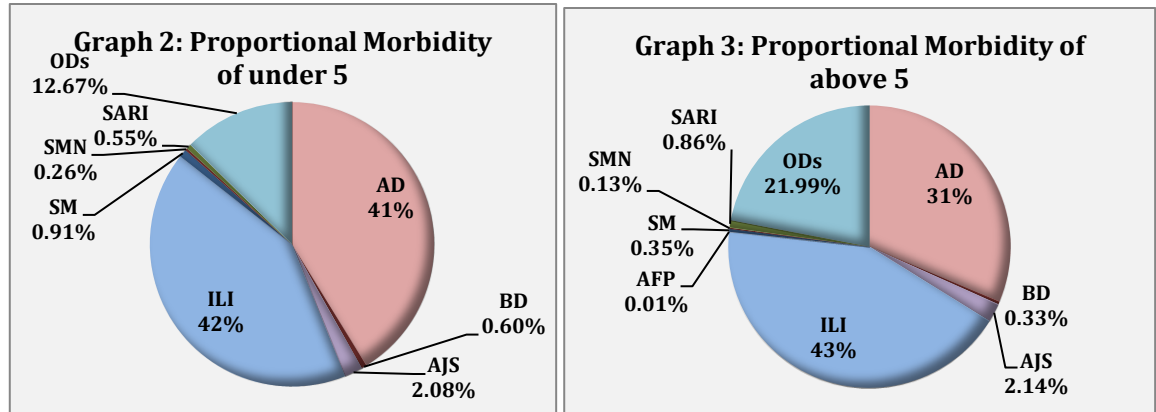
- ❖ The overall completeness of reporting was 81%; (1026 out of total 1267 EWARS sentinel sites). 14 governorates have reported this week.
- ❖ Timeliness of reporting was 82%.



**❖ The Morbidity Cases**

- ❖ Out of the 225,828 total consultations, a total of 24,985 EWARS notifiable cases were reported; of which 10,580 cases were Influenza like Illness (42%), 8,895 cases were Acute Diarrhoea (35%), 528 cases of AJS, 111 cases of Bloody Diarrhoea, 181 cases of Sever Acute Respiratory Infection, 148 cases of Suspected Measles, and 47 cases of Suspected Meningitis.

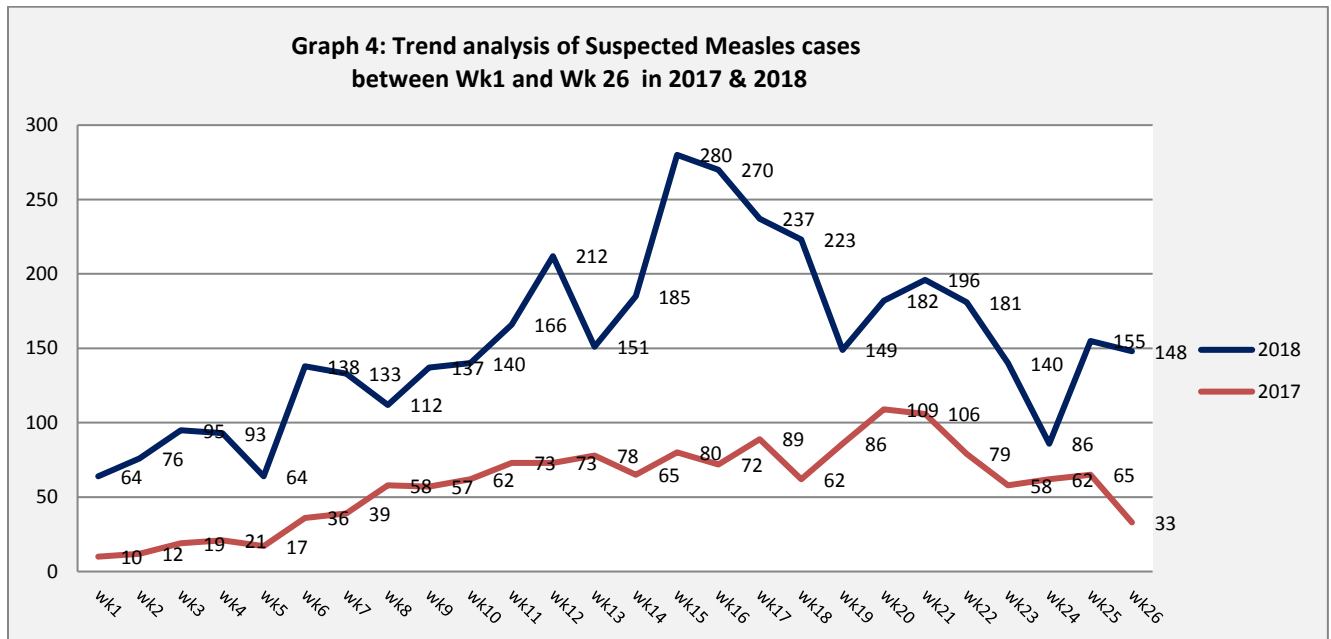
❖ **Graphs 2 and 3 below** show the proportional morbidity among < 5 and ≥ 5 year age groups respectively.



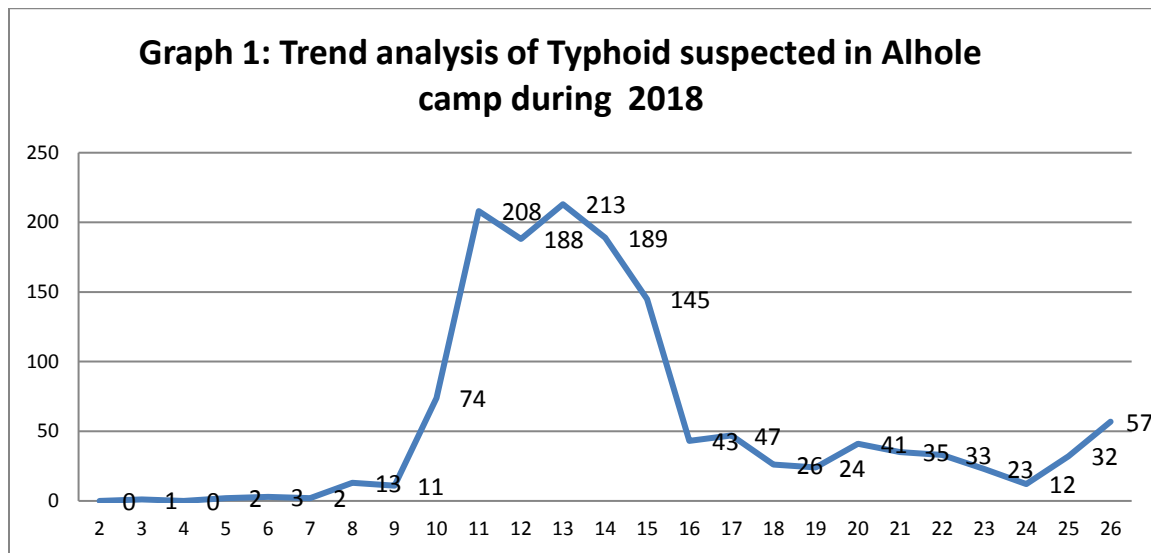
- ❖ 51% of the cases were distributed among males. 57% of the cases were distributed among ≥5 age group.
- ❖ AD constitutes (41%) among < 5 and (31%) among ≥ 5, while ILI constitutes (42%) of the cases among < 5 and (43%) among ≥ 5.

❖ In total 4,492 cases were reported as “other diseases”. The most important diseases reported within this group were; 1088 cases of Leishmaniasis (mostly from Aleppo, Idlib and Hama), 211 cases of Brucellosis, 235 cases of Typhoid, 12 cases of TB.

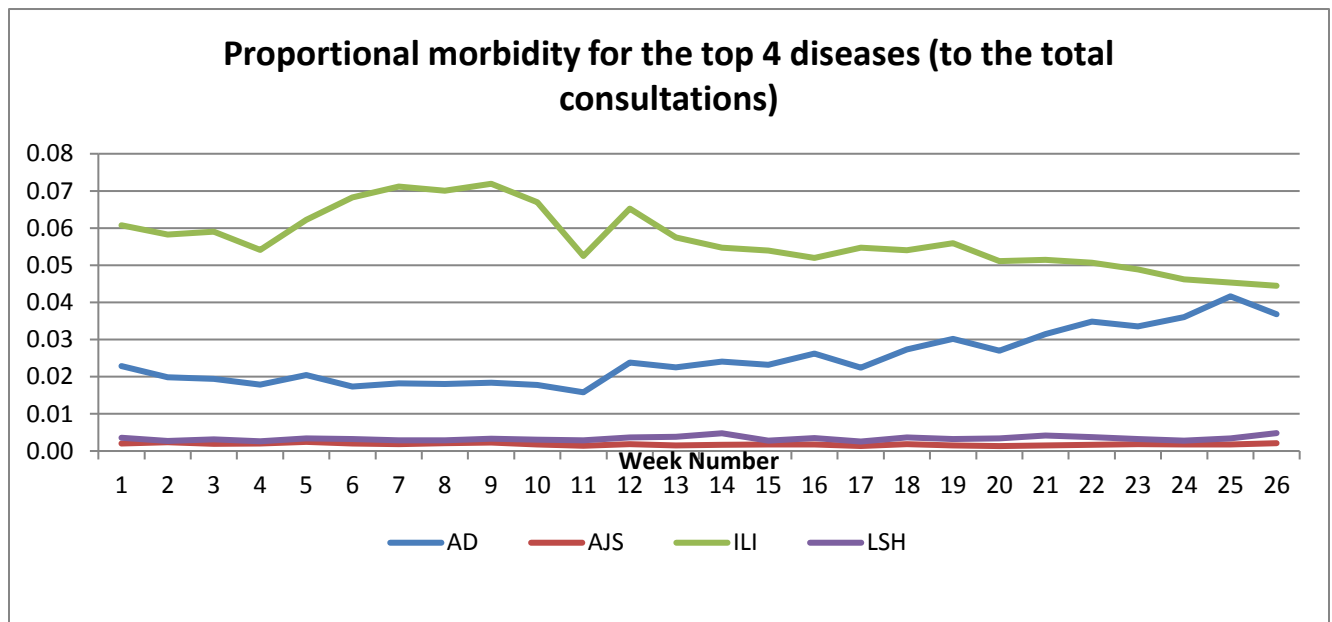
❖ **Graph 4:** shows the trend analysis of suspected Measles cases reported between week 1 and week 26 of 2017 and 2018. It a shows increase in reported cases in week 25 and 26



**Graph 5: Trend analysis of suspected Typhoid cases in Alhole camp.** The graph indicates that cases has started to re-increase again since week 24:



**Graph 6** shows the trend analysis of top four diseases to total consultations. It shows an increase in the trend of Acute Diarrhea cases in this week, this increase is synchronized with summer season.



- ❖ The table below shows comparison between reported cases in week-25 and week-26 2018.

**Table 1: Comparison between reported cases for week 25 & week 26 in 2018.**

Disease	1st Week	2nd Week
	25	26
AD	8,483	8,895
BD	190	111
AWD	0	0
AJS	379	528
ILI	9,406	10,580
AFP	2	2
SM	155	148
SMN	30	47
SARI	155	181
TYF	180	235
PER	60	54
LSH	665	1088
BRU	186	211
TB	11	12
SCA	406	503
LIC	353	695
CHP	464	480
MUM	22	32
Others	990	1182
<b>Total</b>	<b>22137</b>	<b>24985</b>

## ❖ The Response

### **Measles in Mabrouka Camp:**

Investigation mission to the camp was conducted through WHO - EWARS focal point in Hassakeh, blood samples were collected in coordination with lab technician in a medical point inside the camp. EWARS training for health workers in the camp on reporting format and diseases standard case definitions.

Blood samples were collected from 3 suspected cases, samples will be tested at the reference lab in Damascus.

The Ministry of Health in collaboration with WHO will conduct a Measles campaign in two rounds in the second half of 2018 as follows:

- Round1: 15-26 July 2018 for children 7-71 months
  - Round2: 16-27 August 2018 school children 6 – 12 year old
- The campaign will be conducted in 7 governorates including Hasakah, IDPs and refugees camps.

### **Typhoid cases in Alhole camp:**

All cases reported through EWARS were tested by Widal (results above 1/40). Blood specimens will be collected from some suspected cases and will be tested at WHO reference lab.

**Table-2: Distribution of cases per age group, and by Governorate-week-26, 2018:**

Code	age group	Idleb	Hassaka	Raqqa	Sweida	Qunaitra	Lattakia	Aleppo	Hama	Homs	Daraa	Damascus	DierEzor	Rural Damascus	Tartous	Grand Total	
AD	< 5	194	231	229	133	49	345	726	287	142	97	422	913	566	98	4,432	8,895
	≥ 5	139	195	129	152	74	486	541	156	125	112	559	855	720	220	4,463	
BD	< 5	0	26	20	1	0	3	1	0	0	1	0	12	0	0	64	111
	≥ 5	0	32	10	0	0	0	0	0	0	0	5	0	0	0	47	
AWD	< 5	0	0	0	0	0	0	0	0	0	0	0	0	0	0	0	0
	≥ 5	0	0	0	0	0	0	0	0	0	0	0	0	0	0	0	
AJS	< 5	0	15	58	2	0	2	25	11	3	0	9	85	12	2	224	528
	≥ 5	0	31	37	0	2	17	64	43	14	4	25	34	19	14	304	
ILI	< 5	25	124	26	121	208	1,038	684	98	82	106	216	608	979	168	4,483	10,580
	≥ 5	17	144	14	160	348	1,007	820	63	137	220	528	603	1,507	529	6,097	
AFP	< 5	0	0	0	0	0	0	0	0	0	0	0	0	0	0	0	2
	≥ 5	0	0	0	0	0	0	1	0	0	1	0	0	0	0	2	
SM	< 5	0	22	39	0	0	4	1	2	1	0	0	28	1	0	98	148
	≥ 5	0	25	11	0	0	1	0	1	0	0	0	12	0	0	50	
SMN	< 5	0	1	7	1	0	2	2	8	0	1	4	0	0	2	28	47
	≥ 5	0	0	4	1	0	0	0	9	0	0	2	0	1	2	19	
SARI	< 5	0	6	13	3	0	0	3	21	0	0	11	0	0	2	59	181
	≥ 5	0	5	16	9	0	7	4	21	1	0	56	0	0	3	122	
Others	< 5	474	87	41	11	6	13	366	45	11	17	9	144	137	1	1,362	4,492
	≥ 5	347	167	63	13	20	68	587	248	53	23	52	595	887	7	3,130	
Total Sum of < 5		693	512	433	272	263	1,407	1,808	472	239	222	671	1,790	1,695	273	10,750	24,985
Total Sum of ≥ 5		503	599	284	335	444	1,586	2,017	541	330	360	1,227	2,100	3,134	775	14,235	
Total		1,196	1,111	717	607	707	2,993	3,825	1,013	569	582	1,898	3,890	4,829	1,048	24,985	