







Photo Credit: Social Media, Syria

## In this issue of Syria COVID-19 Morbidity and Mortality Summary (SMMS) N° 05:

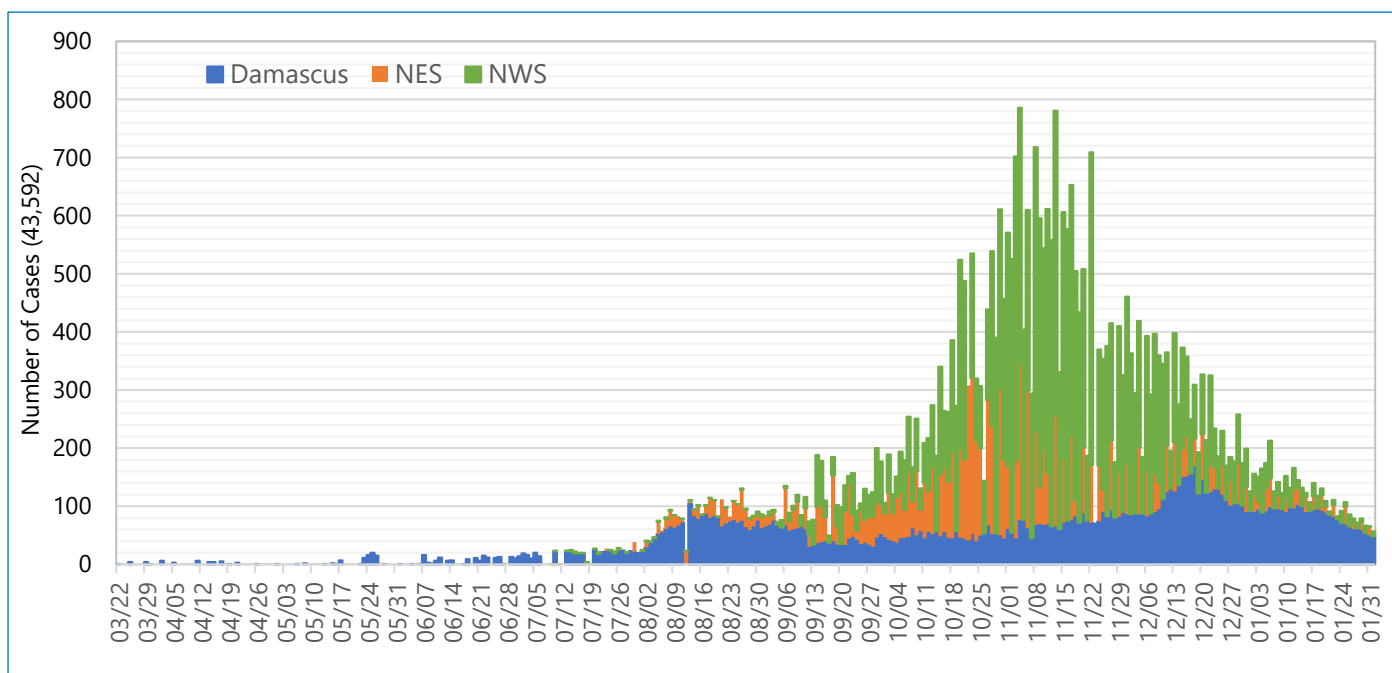
- ✓ *dashboard with key figures for whole of Syria*
- ✓ *detailed epidemiological update on COVID-19 outbreak in Syria and North East Syria*
- ✓ *daily and weekly distribution of COVID-19 cases and related deaths*
- ✓ *daily distribution of COVID-19 cases and rolling seven-day average per governorate in whole of Syria*
- ✓ *overall and cumulative weekly attack rate and rates in selected governorates in Syria*
- ✓ *number of COVID-19 testing laboratories and number of daily tested per 100,000 in Syria and North East Syria*
- ✓ *geographical distribution of COVID-19 attack rate (AR) per governorate in Syria*

Whole of Syria	Tested	Confirmed	Recovered	Dead
				
<b>TOTAL</b>	<b>166,301</b>	<b>43,592</b>	<b>25,662</b>	<b>1,622</b>
<b>Syria</b>	<b>59,418</b>	<b>14,096</b>	<b>7,644</b>	<b>926</b>
<b>NES</b>	<b>22,188</b>	<b>8,490</b>	<b>1,216</b>	<b>296</b>
<b>NWS</b>	<b>84,695</b>	<b>21,006</b>	<b>16,762</b>	<b>400</b>
	<b>Tests/100,000</b>	<b>AR/100,000</b>	<b>Recovery Rate %</b>	<b>CFR%</b>
	<b>815.5</b>	<b>213.8,1</b>	<b>58.9%</b>	<b>3.7</b>
	<b>COVID-19 Hospitals</b>	<b>Isolation Beds</b>	<b>ICU Beds</b>	<b>Ventilators</b>
<b>TOTAL</b>	<b>38</b>	<b>2,902</b>	<b>482</b>	<b>417</b>
<b>Syria</b>	<b>22</b>	<b>1,131</b>	<b>214</b>	<b>180</b>
<b>NES</b>	<b>4</b>	<b>683</b>	<b>34</b>	<b>75</b>
<b>NWS</b>	<b>12</b>	<b>1,088</b>	<b>234</b>	<b>162</b>

## 1. Whole of Syria (WoS)

Between 23 March 2020 and 01 February 2021, there were forty-three-thousand-five-hundred-ninety-two (**43,592**) COVID-19 cases<sup>1</sup> confirmed by rt-PCR. Out of the total number of cases, **48.2%** (**21,006/43,592**) were reported from North West Syria (NWS), **32.3%** (**14,096**) from Damascus, and the remaining **19.5%** (**8,490**) were reported from North East Syria (NES). During the same reporting period, a total of one-thousand-six-hundred-twenty-two (**1,622**) related deaths were reported, of them **57.1%** (**926/1,622**) from **Syria**, **24.7%** (**400**) from **NWS**, and **18.2%** (**296**) from **NES** - the overall Case Fatality Ratio (CFR)<sup>2</sup> is **3.7%**.

*The figure below is showing the daily distribution of reported confirmed COVID-19 cases, 23 March – 01 February 2021, whole of Syria.*



*The following table is showing the reported number of cases, deaths, testing rate, positivity rate, attack rate and case fatality rate per governorate, 23 March 2020 – 01 February 2021, whole of Syria.*

Governorate	# Test	Test/100,000	Positive	Positivity Rate	Attack Rate	# Deaths	CFR
Damascus	17,605	959	2,733	15.52%	148.9	261	9.55%
Rural Damascus	6,179	196	1,424	23.05%	45.1	27	1.90%
Homs	3,920	270	2,223	56.71%	153.2	214	9.63%
As-Sweida	1,315	347	835	63.50%	220.2	45	5.39%
Al-Hasakeh	13,159	1,241	4,992	37.94%	470.8	216	4.33%
Dar'a	2,861	282	924	32.30%	91.0	43	4.65%
Lattakia	15,570	1,312	1,763	11.32%	148.6	83	4.71%
Aleppo	55,391	1,408	13,015	23.50%	330.9	336	2.58%
Ar-Raqqa	5,174	749	1,928	37.26%	279.1	4	0.21%
Deir-ez-Zor	907	122	275	30.32%	37.1	13	4.73%
Hama	1,954	146	658	33.67%	49.0	40	6.08%
Quneitra	1,368	1,325	240	17.54%	232.4	23	9.58%
Tartous	1,754	194	1,061	60.49%	117.1	89	8.39%
Idleb	39,144	1,512	11,521	29.43%	445.1	228	1.98%
<b>Total</b>	<b>166,301</b>	<b>815</b>	<b>43,592</b>	<b>26.21%</b>	<b>213.8</b>	<b>1,622</b>	<b>3.72%</b>

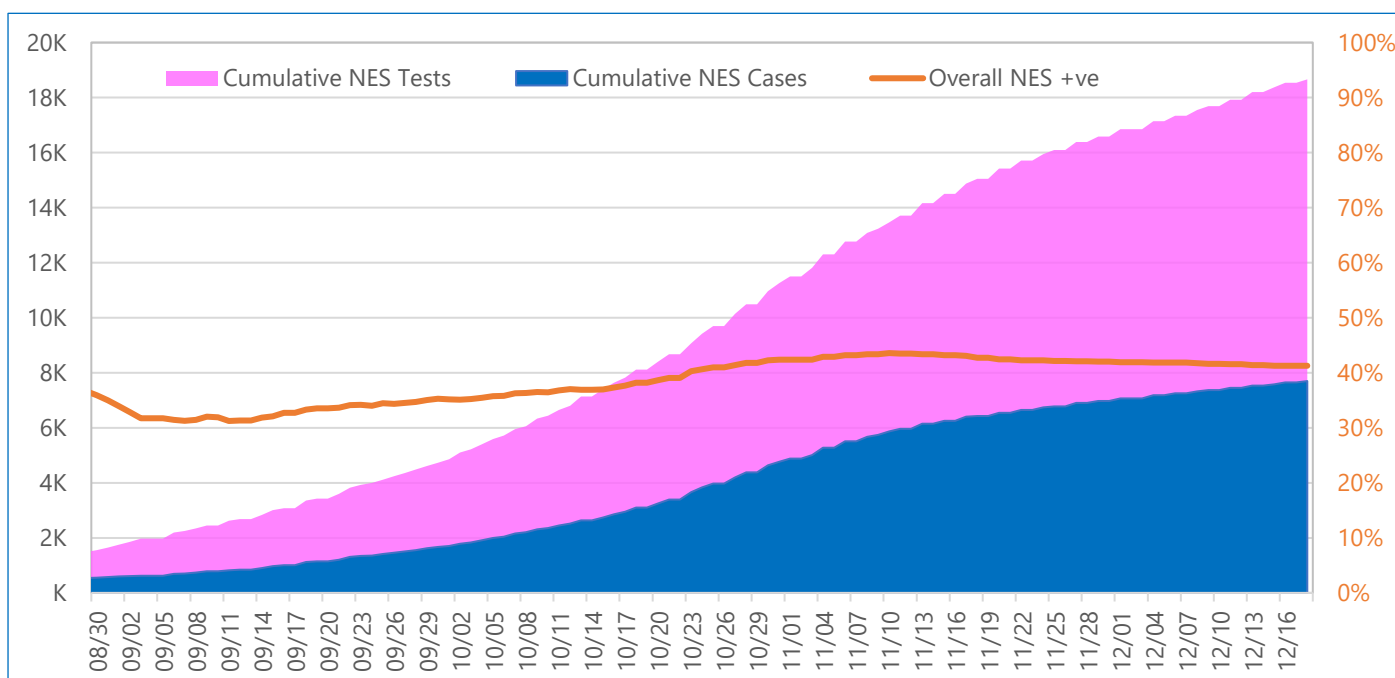
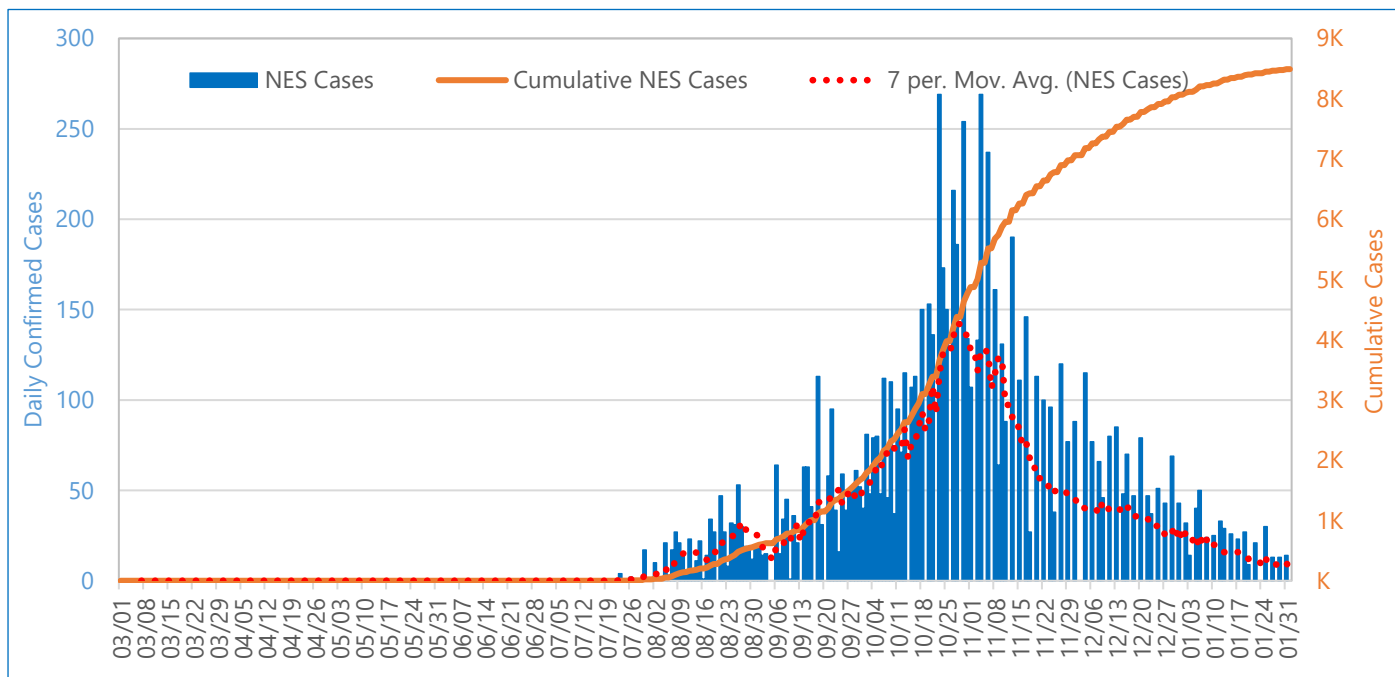
<sup>1</sup> WHO Syria COVID-19 Situation Reports present official counts of confirmed COVID-19 as announced by the MOH on the indicated date. Difference in data between the WHO reports and other sources can result from using different cutoff times for the aggregation and reporting of data. the total number of new cases in the country.

## 2. North East Syria (NES)

In North East Syria, between 23 July 2020 and 01 February 2021, there were eight-thousand-four-hundred-nighty (**8,490**) COVID-19 cases<sup>3</sup> confirmed by rt-PCR, including two-hundred-nighty-six (**296**) related deaths. Case Fatality Ratio (**CFR**) is **3.5%**.

During the same period, a total of **22,188** COVID-19 tests were conducted with the overall positivity rate of **38.3%**. According to available data, health workers are representing **8.1%** (770) among the total number of reported cases.

**The figures below are showing the daily distribution of reported confirmed COVID-19 cases, cumulative number of samples tested and positivity rate, 23 March 2020 – 01 February 2021, North East Syria (NES).**

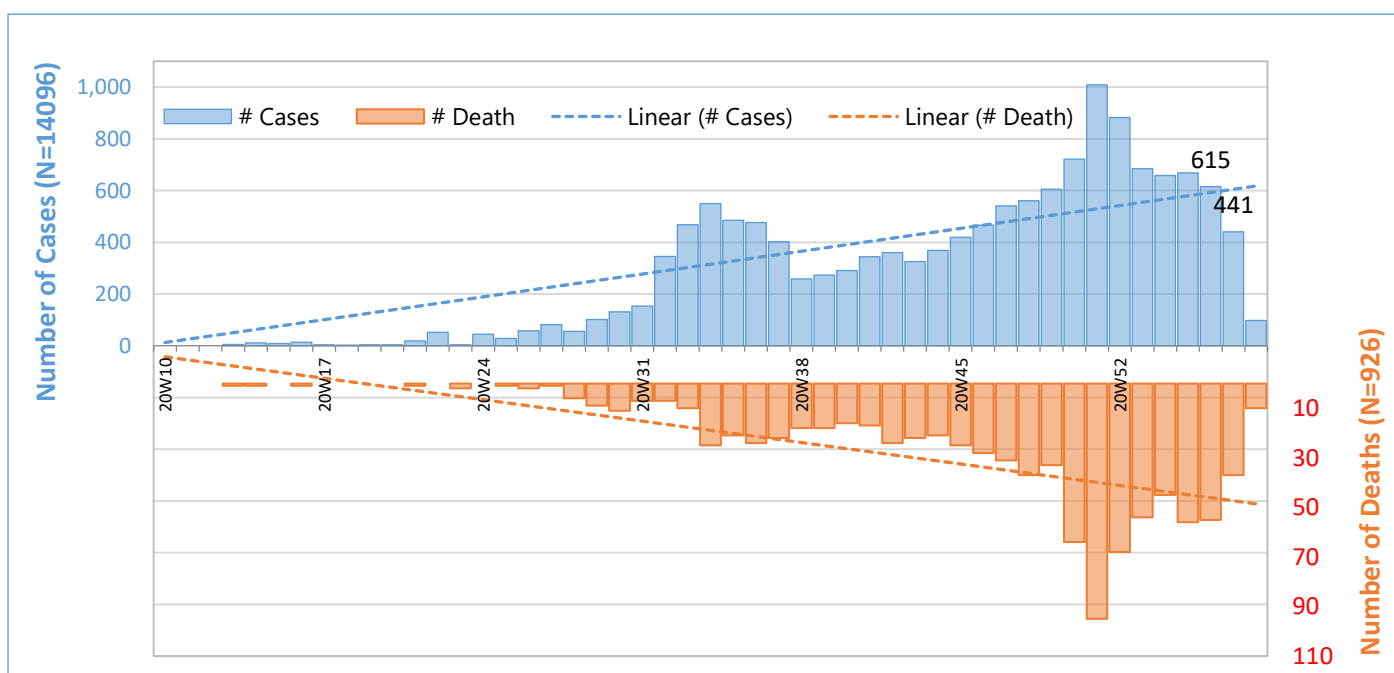
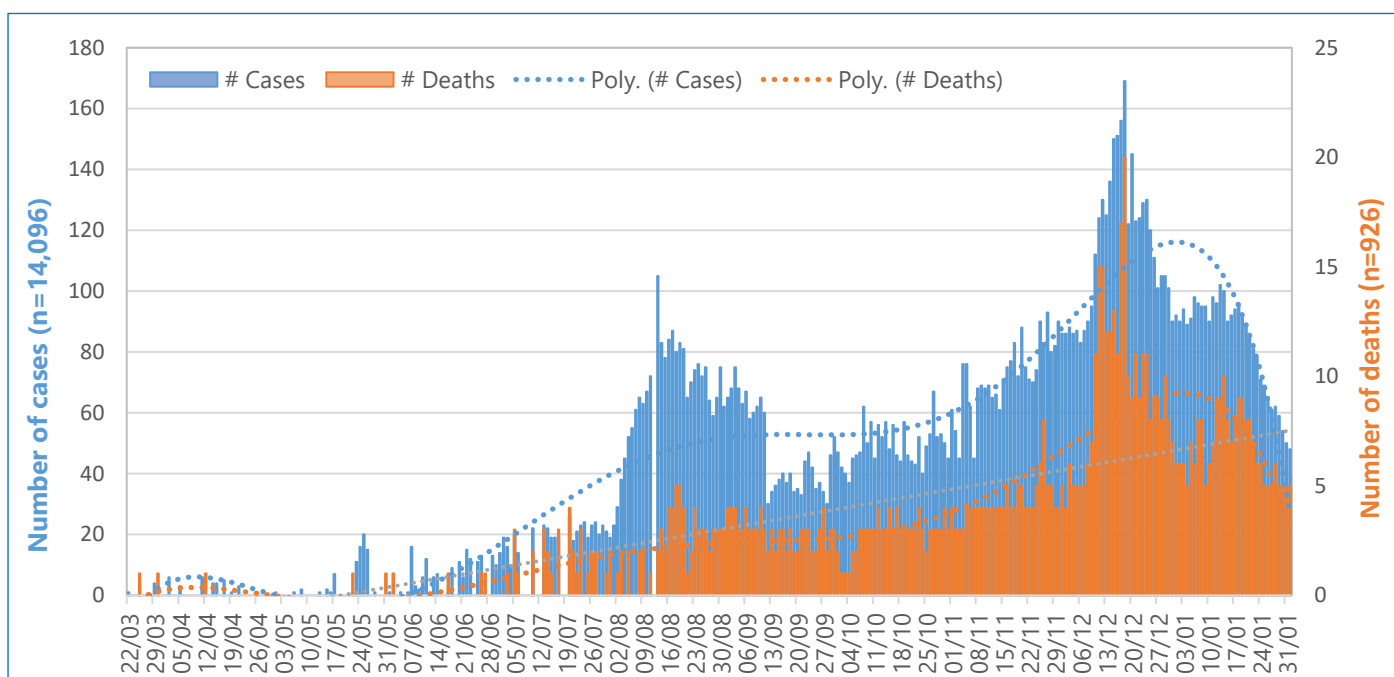


<sup>3</sup> WHO Syria COVID-19 Situation Reports present official counts of confirmed COVID-19 as announced by the MOH on the indicated date. Difference in data between the WHO reports and other sources can result from using different cutoff times for the aggregation and reporting of the total number of new cases in the country.

### 3. Syria

Between 23 March 2020 and 01 February 2021, according to the Ministry of Health (MOH) there were fourteen-thousand-nighty-six (**14,096**) COVID-19 cases<sup>4</sup> confirmed by rt-PCR, including seven-hundred-twenty-nine (**926**) related deaths. Case Fatality Ratio (CFR)<sup>5</sup> is **6.6%**. In the epidemiological week 4 of 2021 in comparison to the previous epidemiological week, the number of new weekly COVID-19 cases decreased by **28.3%** (**411** and **615** respectively) and the weekly number of death cases increased by **32.7%** (**37** and **55** respectively).

**The figures below are showing the daily and weekly distribution of reported confirmed COVID-19 cases and deaths, 23 March 2020 – 01 February 2021, Syria.**

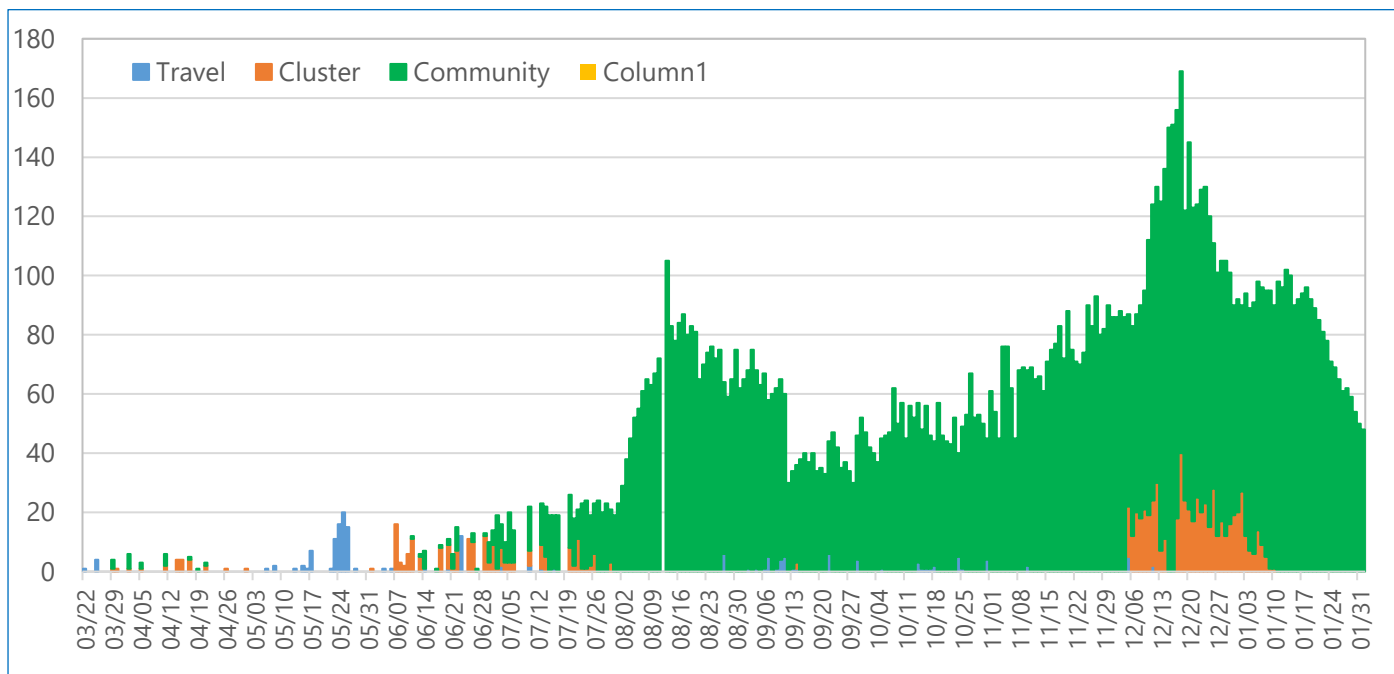


<sup>4</sup> WHO Syria COVID-19 Situation Reports present official counts of confirmed COVID-19 as announced by the MOH on the indicated date. Difference in data between the WHO reports and other sources can result from using different cutoff times for the aggregation and reporting of the total number of new cases in the country.

<sup>5</sup> CFR is not same as Infection fatality ratio (IFR) which is the proportion of individuals diagnosed with a disease who die from that disease and is therefore a measure of severity among detected cases, Estimating mortality from COVID-19, WHO scientific brief, 4 August 2020. <https://www.who.int/publications/i/item/WHO-2019-nCoV-Sci-Brief-Mortality-2020>.

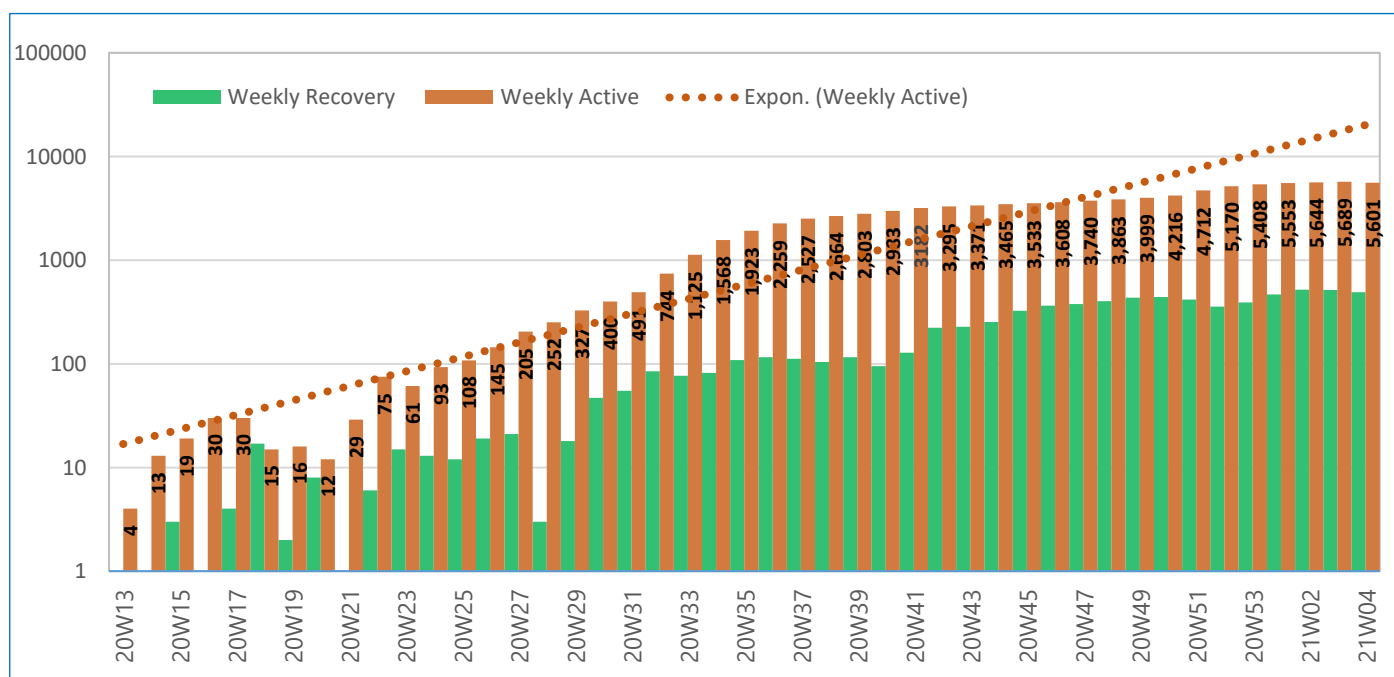
As of 01 February 2021, information on the mode of transmission was available on **100%** of confirmed reported COVID-19 cases (**14,096/14,609**). Of all cases, **93.2%** (13,136) were community transmission, **5.6%** (791) - contacts of confirmed cases (cluster) and **1.2%** (169) were imported cases.

**The figure below is showing the mode of transmission of the reported confirmed COVID-19 cases, 23 March 2020 – 01 February 2021, Syria.**



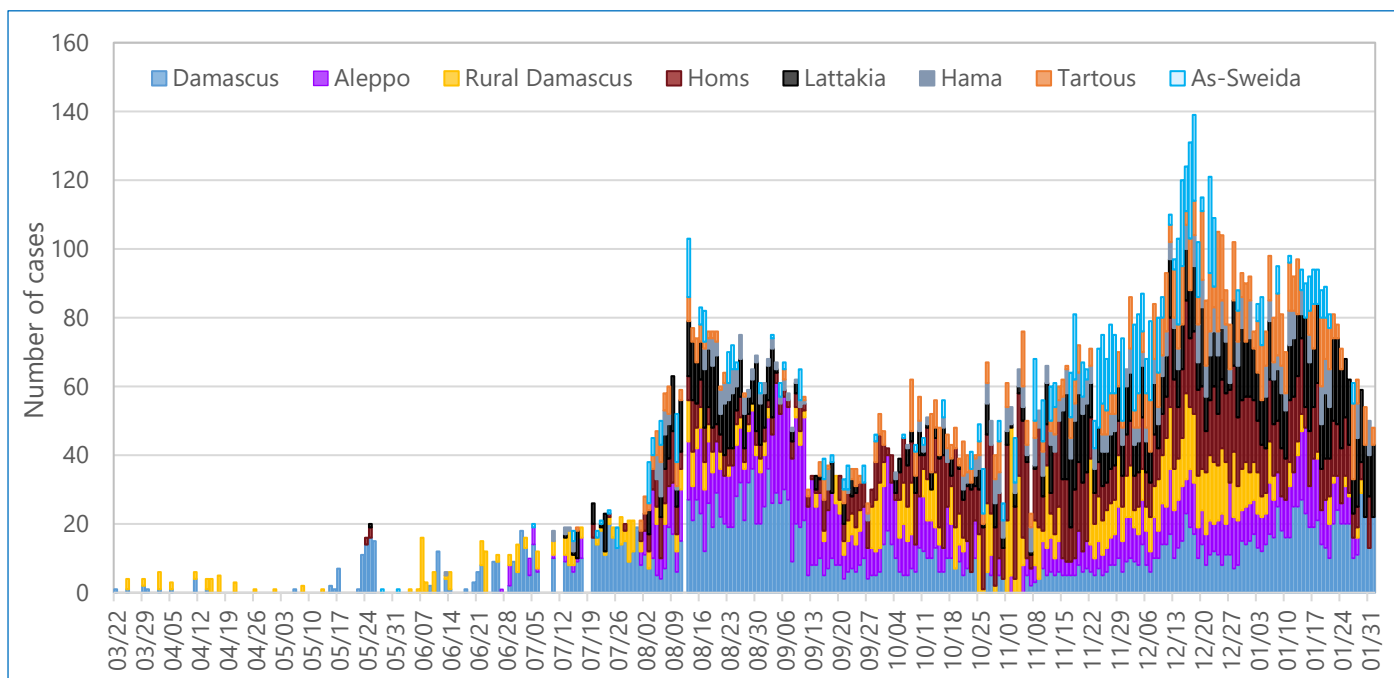
In the epidemiological week 4, 2021, the number of COVID-19 **active cases** decreased by **1.5%**, in comparison to the previous week (**5,601** and **5,689**) and at the same time, the number of **recovered** COVID-19 cases decreased by **4.5%** (**492** and **515** respectively).

**The figure below is showing the weekly outcomes of the reported confirmed COVID-19 cases, 23 March 2020 – 01 February 2021, Syria.**

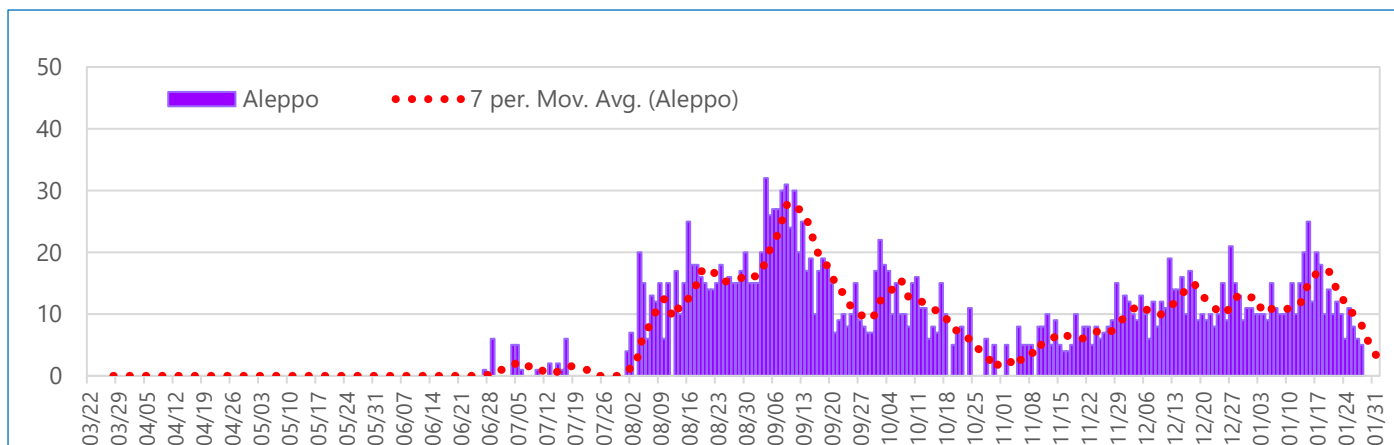
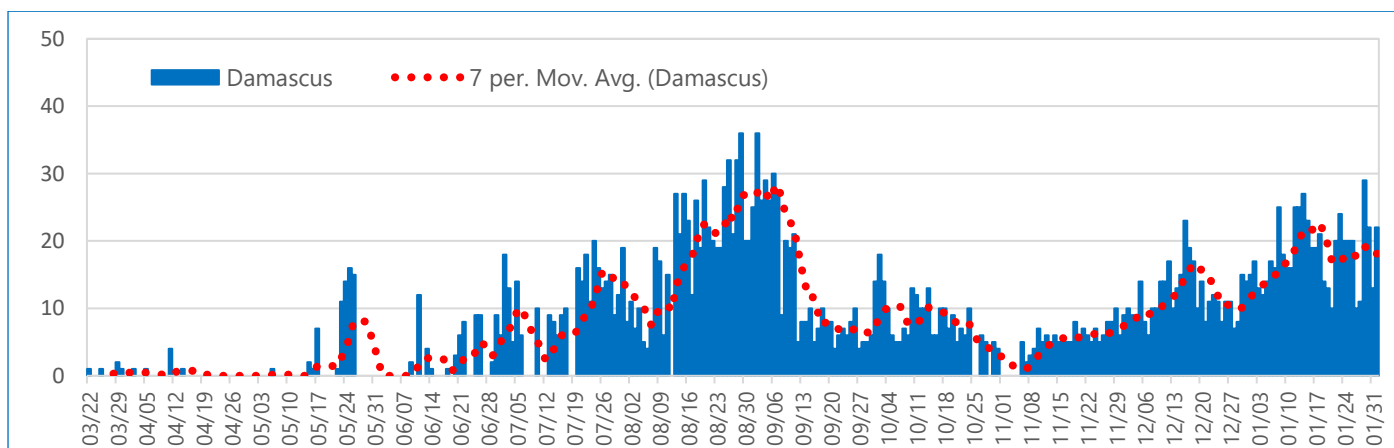


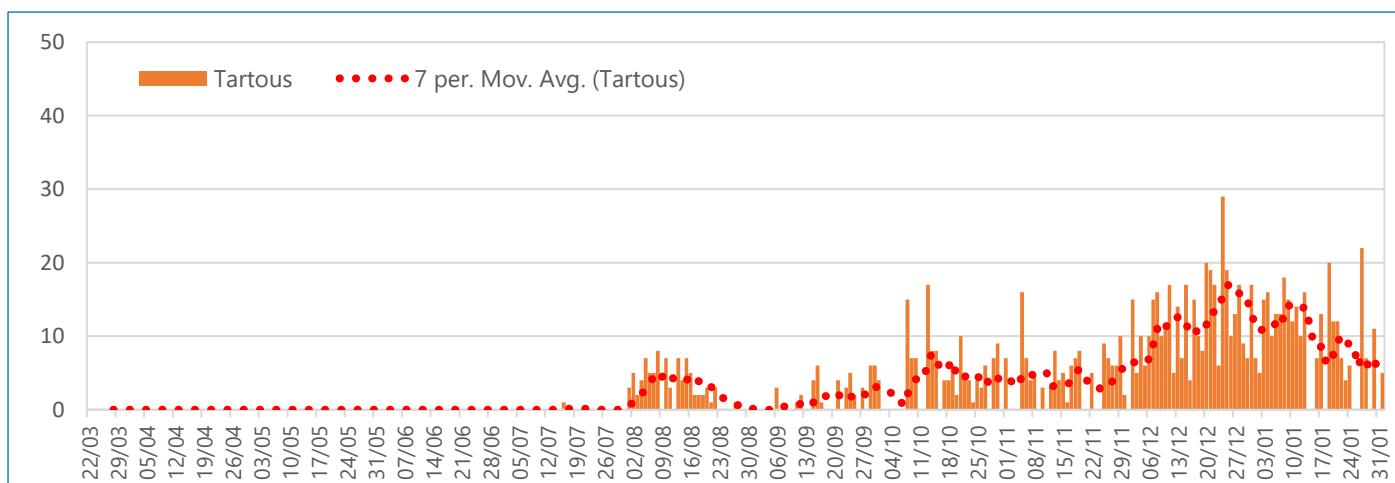
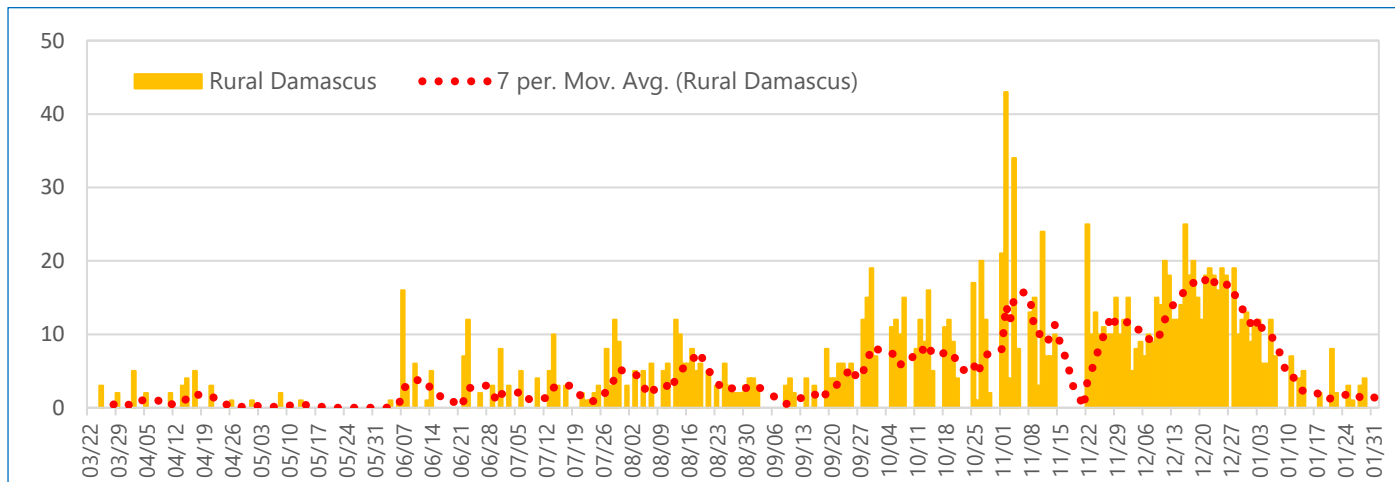
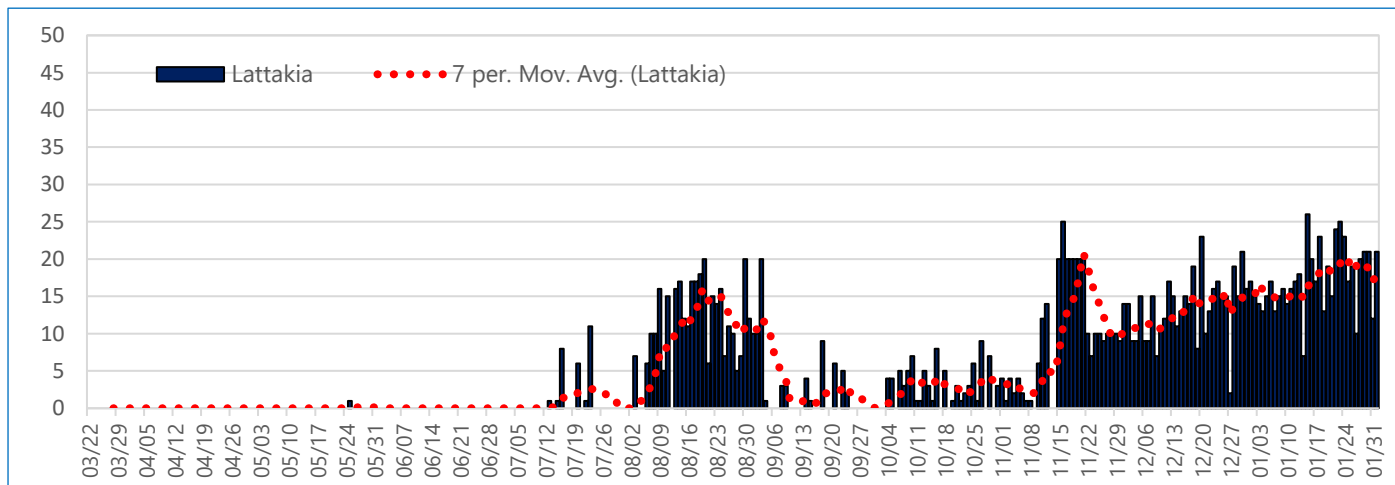
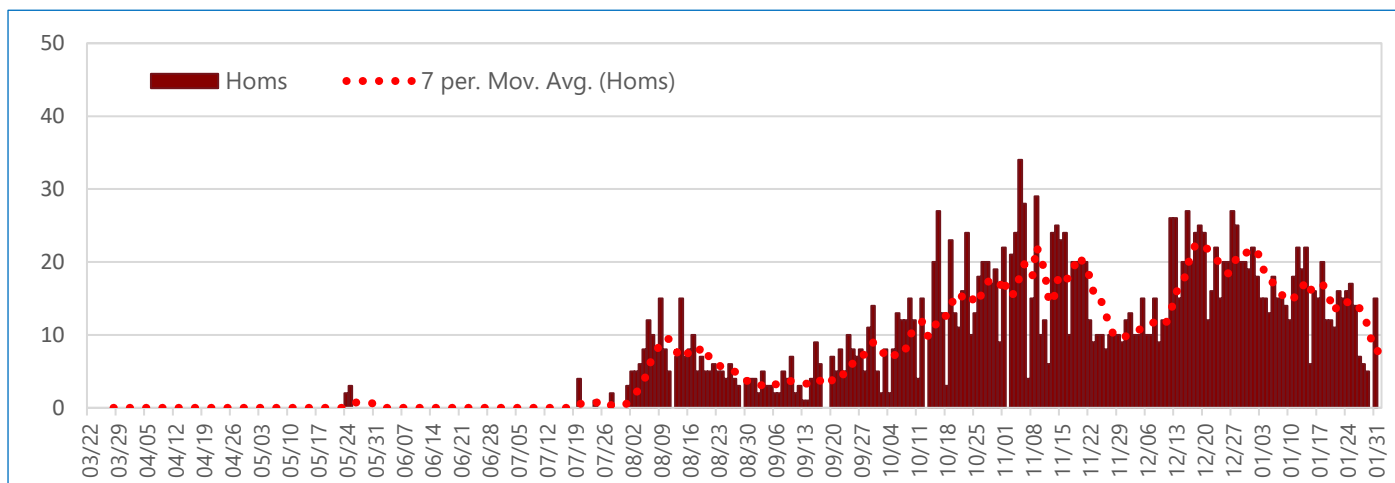
As of 01 February 2021, geographical distribution of confirmed reported COVID-19 cases was available on **100%** of cases (**14,096/14,096**). Of all cases, **19.4% (2,733)** reported from the **Damascus** governorate, followed by **15.8% (2,223)** from **Homs**, **Aleppo**, **15.1% (2135)**, **Lattakia**, **12.5% (1,763)**, **Rural Damascus**, **10.1% (1,424)**, **Tartous**, **7.5% (1,061)**, **Dar'a**, **6.6% (924)**, **As-Sweida**, **5.9% (835)**, **Hama**, **4.7% (658)**, **Quneitra**, **1.7% (240)**, and the remaining **0.4%**. **0.2%** and **0.1%** are from **Deir-ez-Zor**, **Al-Hasakeh**, and **Ar-Raqqa** governorates, respectively.

**The figure below is showing the daily distribution of reported confirmed COVID-19 cases per selected governorate, 23 March 2020 – 01 February 2021, Syria.**



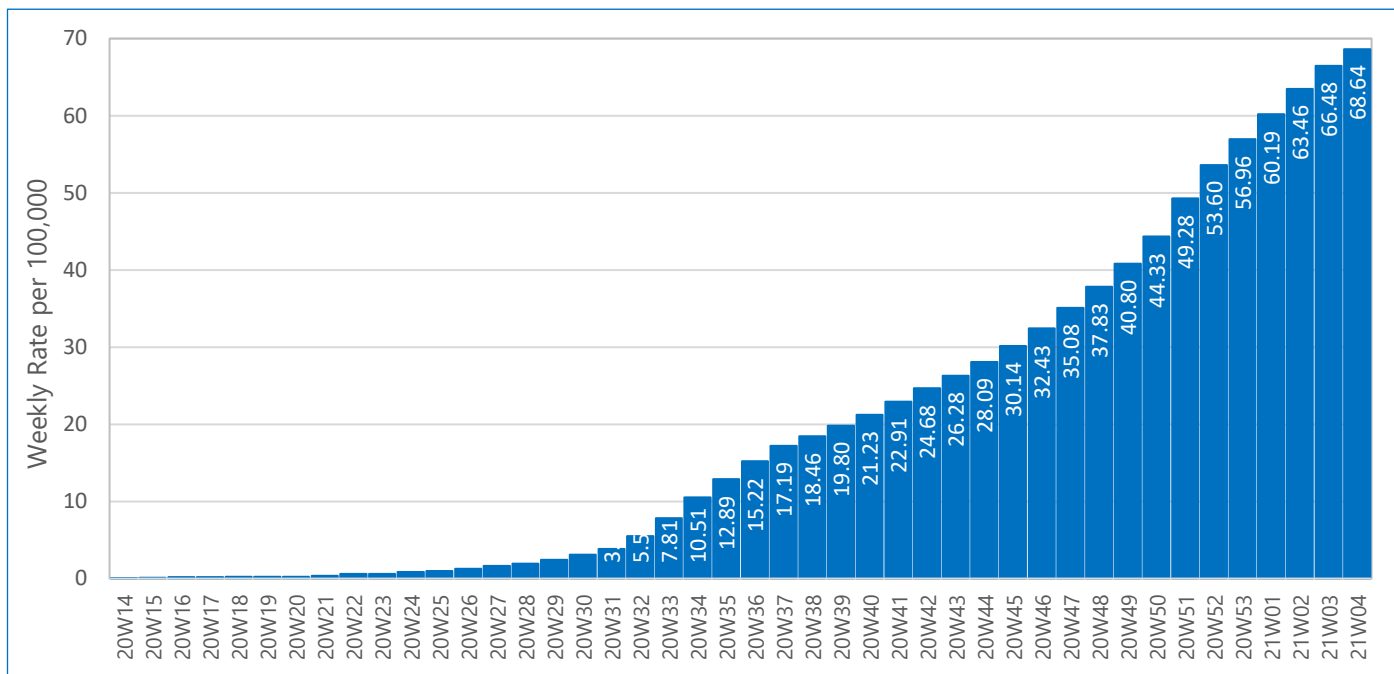
**The figures below are showing the daily distribution of reported confirmed COVID-19 cases and rolling seven-day average in selected governorates, 23 March 2020– 01 February 2021, Syria.**





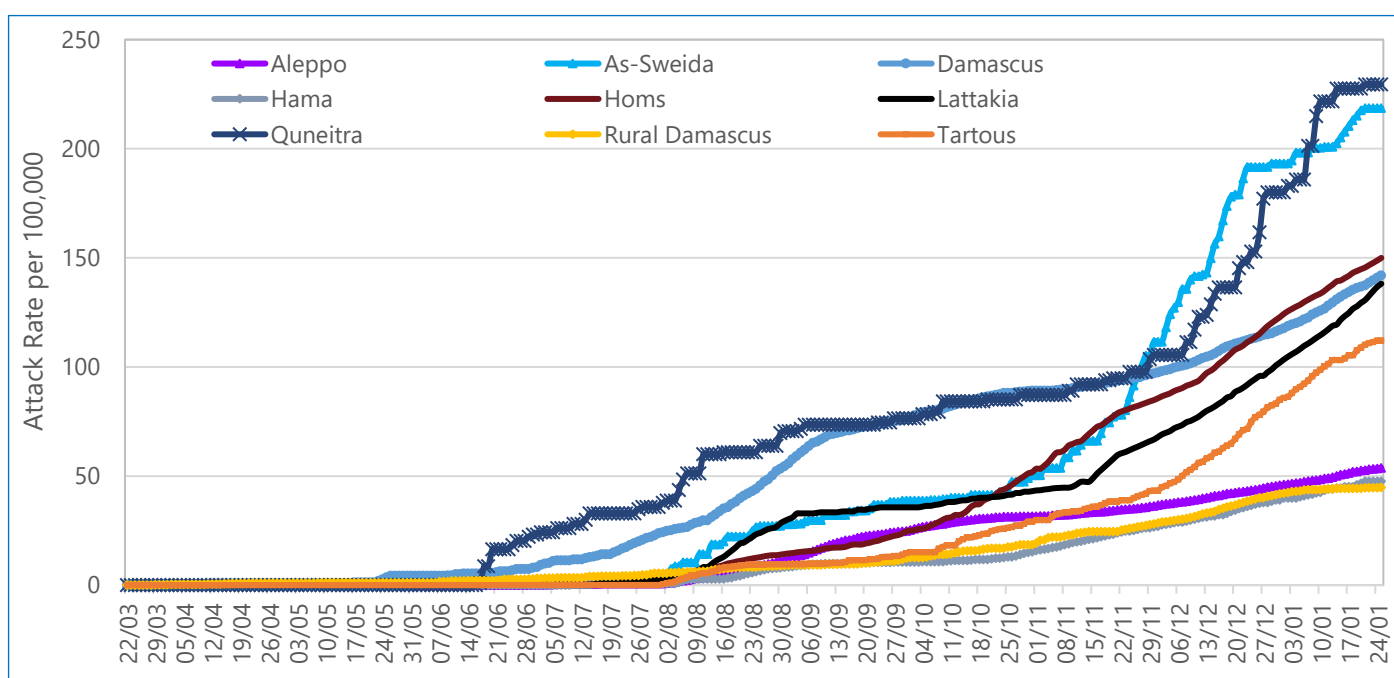
On 01 February 2021, the overall attack rate (AR) in Syria is **68.62** per 100,000 and **100% (13/13)** of governorates, with the total population of 20,393,662 people, have reported confirmed COVID-19 cases. In the epidemiological week 4/2021, COVID-19 weekly AR increased by **6.1%** in comparison to the previous week (68.64 and 66.4) respectively.

**The figure below is showing the weekly COVID-19 attack rate (AR) per 100,000, 23 March 2020 – 01 February 2021, Syria.**



The highest AR is reported from **Quneitra (229.50/100,000)** followed **As-Sweida** by governorate (**1218.64/1,000,000**), **Homs** governorate (**149.96/100,000**), **Damascus** governorate (**141.99/100,000**), **Lattakia** governorate (**138.14/100,000**), **Tartous** governorate (**112.10/100,000**), **Dar'a** governorate (**91.01/100,000**), **Aleppo** (**53.80/100,100**), **Rural Damascus** (**44.80/100,000**), **Hama** governorate (**47.53/100,000**), **Deir-ez-Zor** governorate (**7.82/100,000**), **Al-Hasakeh** governorate (**3.30/100,000**), and the lowest rate (**1.01/100,000**) in **Ar-Raqqa** governorate.

**The following figure is showing the COVID-19 attack rate per 100,000 population in selected governorates, 23 March 2020 – 01 February 2021, Syria.**



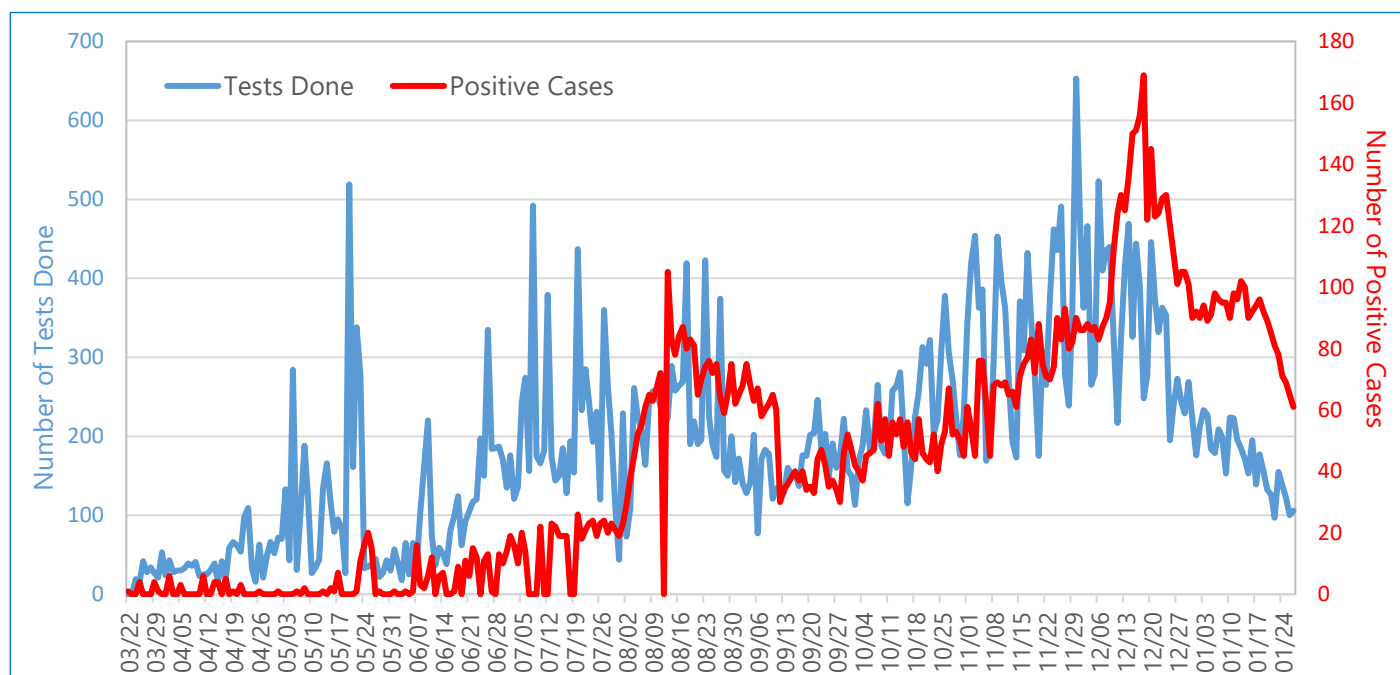
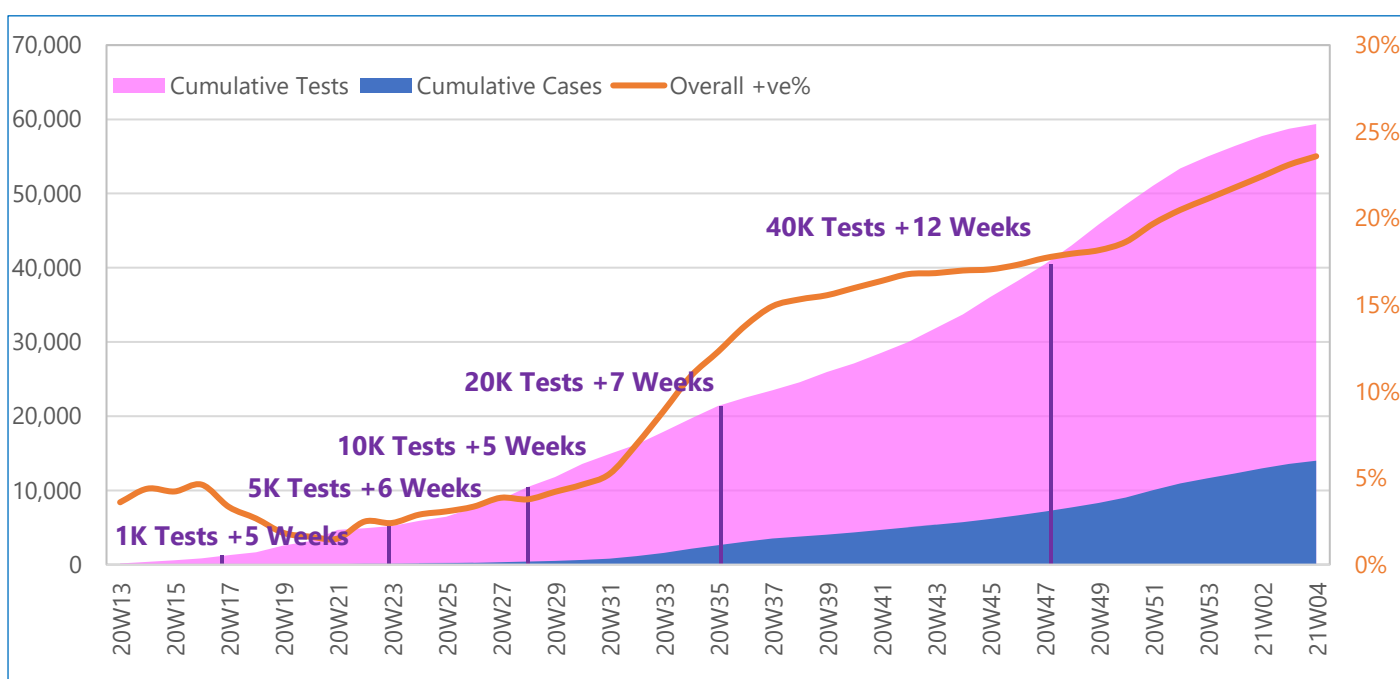


As of 01 February 2021, there are **24** functional RPC machines in 13 COVID-19 laboratories, out of them **8** COVID-19 laboratories (10 PCR machines) in Syria, **3** laboratories (9 PCR machines) in NEW and **2** laboratories (5 PRC machines) in NES.

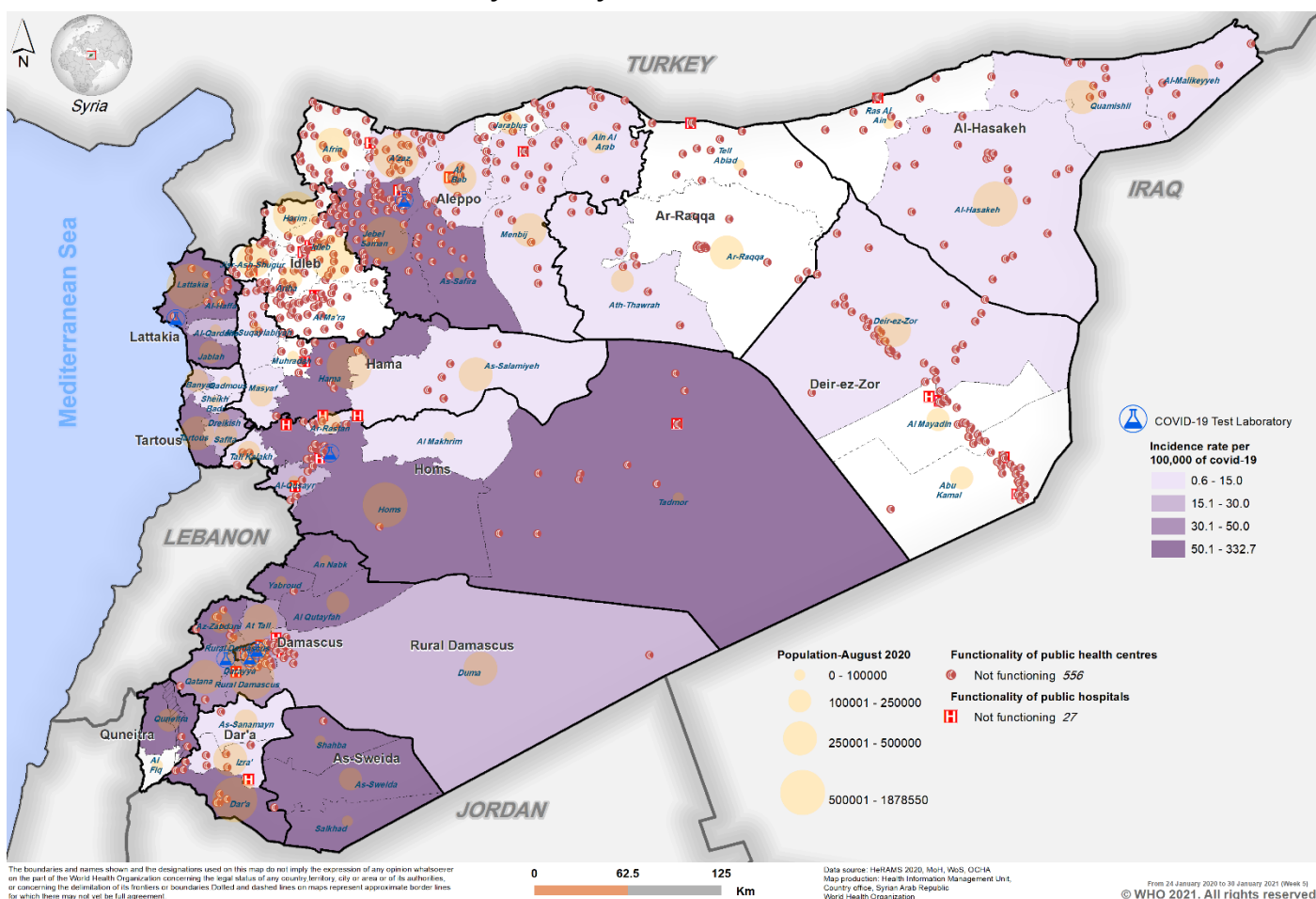
Between 23 March 2020 and 01 February 2021, a total of **166,301** COVID-19 tests with the overall positivity rate of **26.2%** with overall testing rate of **727.5/100,000** in **whole of Syria**. Out of them **50.9%** (**84,695/148,370**) tested in **NWS**, **35.7%** (59,418) in **Syria** and **13.3%** (22,188) in NES.

The overall positivity rate of all **59,418** COVID-19 tests conducted in **Syria** (23 March 2020 - 01 February 2021) was **23.7%**. Since the beginning of COVID-19 testing in Syria, the first 1,000 tests were conducted in 5 weeks, reaching 5,000 tests in 6 weeks, 10,000 tests in 5 weeks, 20,000 tests in 6 weeks, 40,000 tests in 13 weeks and 50,000 tests in 12 weeks. The analysis of data on the two variables (weekly number of tests and number of confirmed cases) in Syria showed correlation coefficient (**R**) between the two variables as **0.631**.

**The graphs below are showing the cumulative number of Samples tested and Positivity rate, 23 March 2020 – 01 February 2021, Syria.**



The map below is showing COVID-19 Attack Rate (AR) by governorates and the location of COVID-19 laboratories, 23 March 2020 – 01 February 2021, Syria.



#### 4. Useful COVID-19 links:

WHO Syria, COVID-19 Dashboard (English):

<https://app.powerbi.com/view?r=eyJrIjojNmY5OGYzNDYtNjZhMy00MWlyLWlyMzctYzc4MmI3ZDNIODk5IiwidCI6ImY2MTBjMGI3LWJkMjQ0NzI0OS04MTBiLTNkYzI4MGFmYjU5MCIslmMiOjhh9>

WHO Syria, COVID-19 Dashboard (Arabic):

<https://app.powerbi.com/view?r=eyJrIjojNTA0NWxzMmYtMDJiMC00ZWU0LTllNTktZTViZjYwYThjZmUzIiwidCI6ImY2MTBjMGI3LWJkMjQ0NzI0OS04MTBiLTNkYzI4MGFmYjU5MCIslmMiOjhh9>

COVID-19 situation in EMRO Region reports: <http://www.emro.who.int/health-topics/corona-virus/index.html>

Latest global WHO weekly update on COVID-19, 02 February 2021: <https://www.who.int/emergencies/diseases/novel-coronavirus-2019/situation-reports>

WHO COVID-19 Country and Technical Guidance: <https://www.who.int/emergencies/diseases/novel-coronavirus-2019/technical-guidance>

WHO COVID-19 Online Training: <https://openwho.org/channels/covid-19>