







Photo, Social Media, Syria

In this issue of Syria COVID-19 Morbidity and Mortality Summary (SMMS) N° 10:

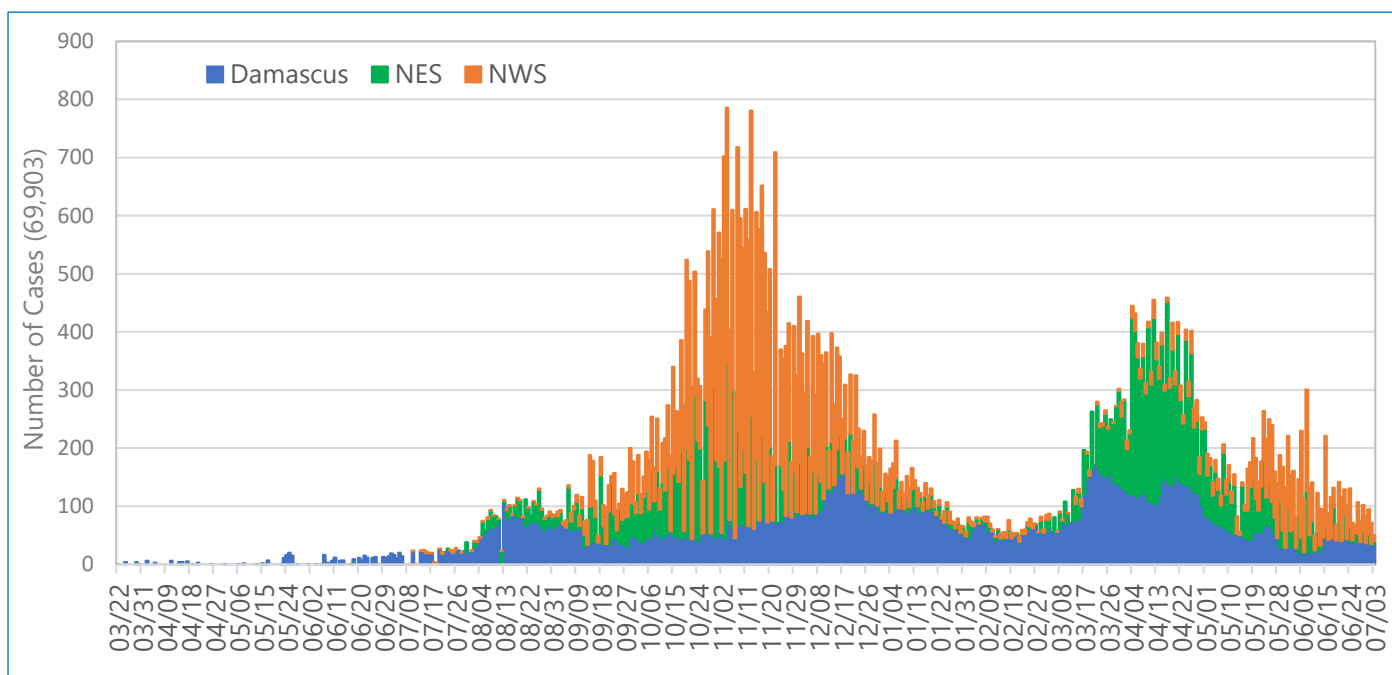
- ✓ summary epidemiological update on COVID-19 outbreak in whole of Syria
- ✓ daily and weekly distribution of COVID-19 cases in whole of Syria and per governorates
- ✓ weekly distribution of COVID cases in the WHO EM region and in Syria
- ✓ number of cases, deaths, testing rate, positivity rate, attack rate and case fatality rate per governorate
- ✓ modes of transmission of weekly reported COVID cases and weekly outcomes of the COVID-19 cases
- ✓ overall and cumulative weekly attack rate and rates in selected governorates in Syria
- ✓ COVID-19 testing rate and positivity rate for the whole of Syria

Whole of Syria	Tested	Confirmed	Recovered	Dead
				
TOTAL	290,280	69,903	46,272	3,357
Syria	82,614	25,619	21,845	1,885
NES	51,738	18,532	1,875	763
NWS	155,928	25,752	22,552	709
	Tests/100,000	AR/100,000	Recovery Rate %	CFR%
	1,423	342.8	66.2%	4.8
	COVID-19 Facilities	Isolation Beds	ICU Beds	Ventilators
TOTAL	185	3,447	1,161	861
Syria	151	1,832	828	602
NES	22	689	85	93
NWS	12	926	248	166

1. Whole of Syria (WoS)

Between 23 March 2020 and 05 July 2021, there were sixty-nine-thousand-nine-hundred-three (**69,903**) COVID-19 cases¹ confirmed by rt-PCR. Out of the total number of cases, **36.7%** (**25,619/69,903**) were reported from Damascus, **36.8%** (**25,752**) from Northwest Syria (NWS), and the remaining **26.5%** (**18,532**) were reported from Northeast Syria (NES). During the same reporting period, a total of three-thousand-three-hundred-fifty-seven (**3,357**) related deaths were reported, of them **56.2%** (**1,885/3,357**) from **Syria**, **22.7%** (**763**) from **NES**, and **21.1%** (**709**) from **NES** - the overall Case Fatality Ratio (**CFR**)² is **4.8%** (**3,357/69,903**).

The figure below is showing the daily distribution of reported confirmed COVID-19 cases, 23 March – 05 July 2021, whole of Syria.



The following table is showing the reported number of cases, deaths, testing rate, positivity rate, attack rate and case fatality rate per governorate, 23 March 2020 – 05 July 2021, whole of Syria.

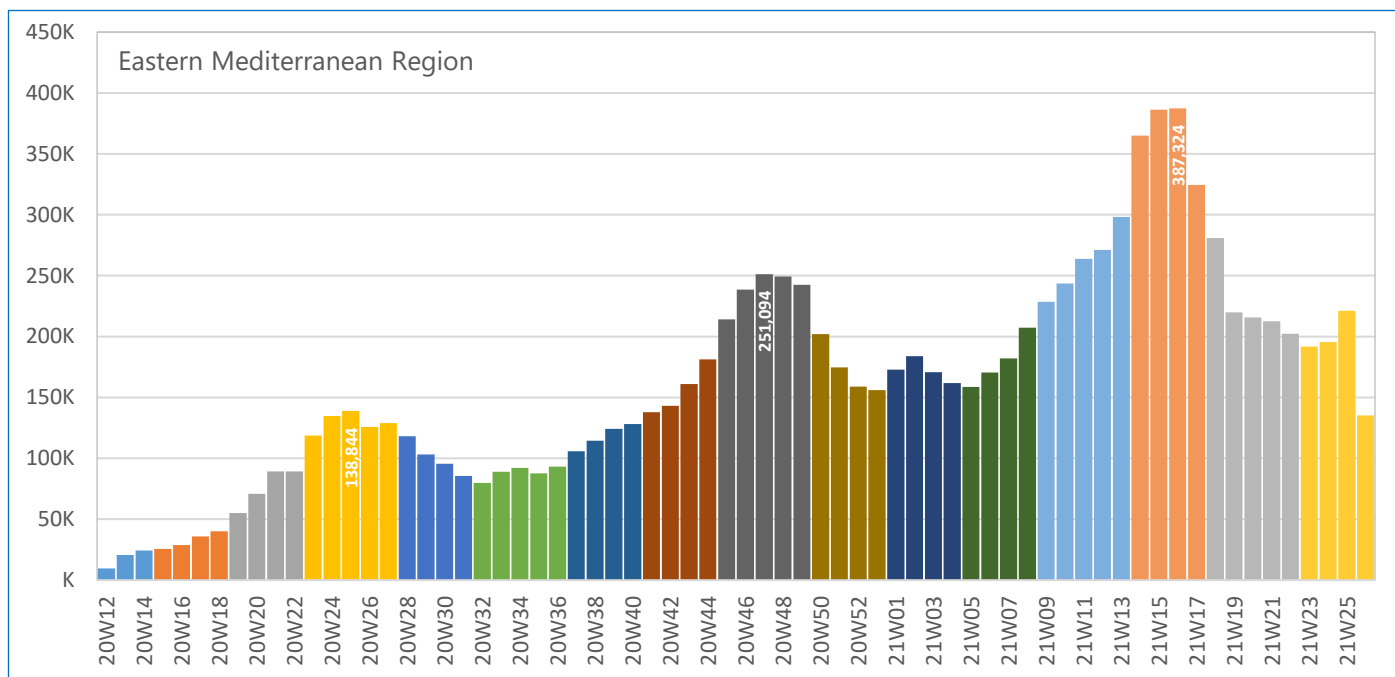
Governorate	# Test	Test/100,000	# Positive	Positivity Rate	Attack Rate	# Deaths	CFR
As-Sweida	1,733	457	1,292	74.6%	340.7	83	6.42%
Tartous	2,863	316	1,856	64.8%	204.8	202	10.88%
Homs	5,299	365	3,026	57.1%	208.5	296	9.78%
Ar-Raqqa	12,620	1,827	4,513	35.8%	653.3	95	2.11%
Hama	2,849	212	1,178	41.3%	87.8	40	3.40%
Aleppo	103,610	2,634	18,633	18.0%	473.7	681	3.65%
Dar'a	3,668	361	1,324	36.1%	130.4	64	4.83%
Deir-ez-Zor	3,006	406	1,067	35.5%	143.9	94	8.81%
Rural Damascus	9,965	315	2,581	25.9%	81.7	36	1.39%
Quneitra	1,916	1,855	494	25.8%	478.4	29	5.87%
Damascus	24,925	1,358	5,633	22.6%	306.9	603	10.70%
Lattakia	17,699	1,492	3,896	22.0%	328.4	225	5.78%
Al-Hasakeh	31,664	2,986	11,363	35.9%	1071.6	483	4.25%
Idleb	68,463	2,645	13,047	19.1%	504.0	426	3.27%
Total	290,280	1,423	69,903	24.1%	342.8	3,357	4.8%

¹ WHO Syria COVID-19 Situation Reports present official counts of confirmed COVID-19 as announced by the MOH on the indicated date. Difference in data between the WHO reports and other sources can result from using different cutoff times for the aggregation and reporting of data. the total number of new cases in the country.

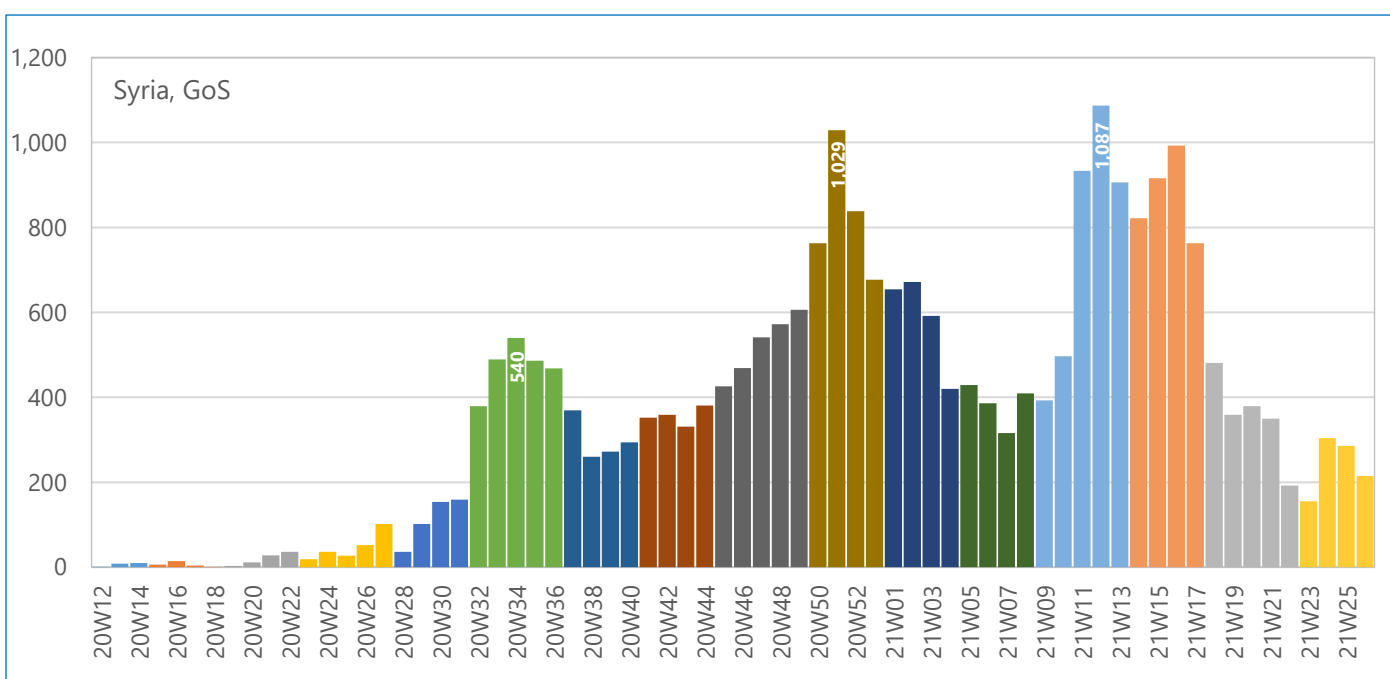
The coronavirus disease COVID-19 continues to spread at the regional and global levels. As of 05 July 2021, the global cumulative incidence reached **182,319,261** reported cases and **3,954,324** associated deaths with a Case Fatality Ratio (CFR) of **2.2%**. Meanwhile, the 22 countries of the Eastern Mediterranean Region (EMR) have reported a total of **11,167,992** cases, which represent **6.0%** of the global count, with **219,353** associated deaths (CFR **2.0%**).

During the epidemiological weeks 24 and 46 in 2020 and week 15 in 2021, the WHO Eastern Mediterranean Region reported increase in reported cases (three ‘waves’), which lasted for about 4 weeks each. Notably, in Syria the increase of the reported cases was recorded in the epidemiological weeks 34 and 51 in 2020 and week 12 in 2021.

The figure below is showing the distribution of the weekly reported confirmed COVID-19 cases, 16 March 2020 – 05 July 2021, Eastern Mediterranean Region (EMR).



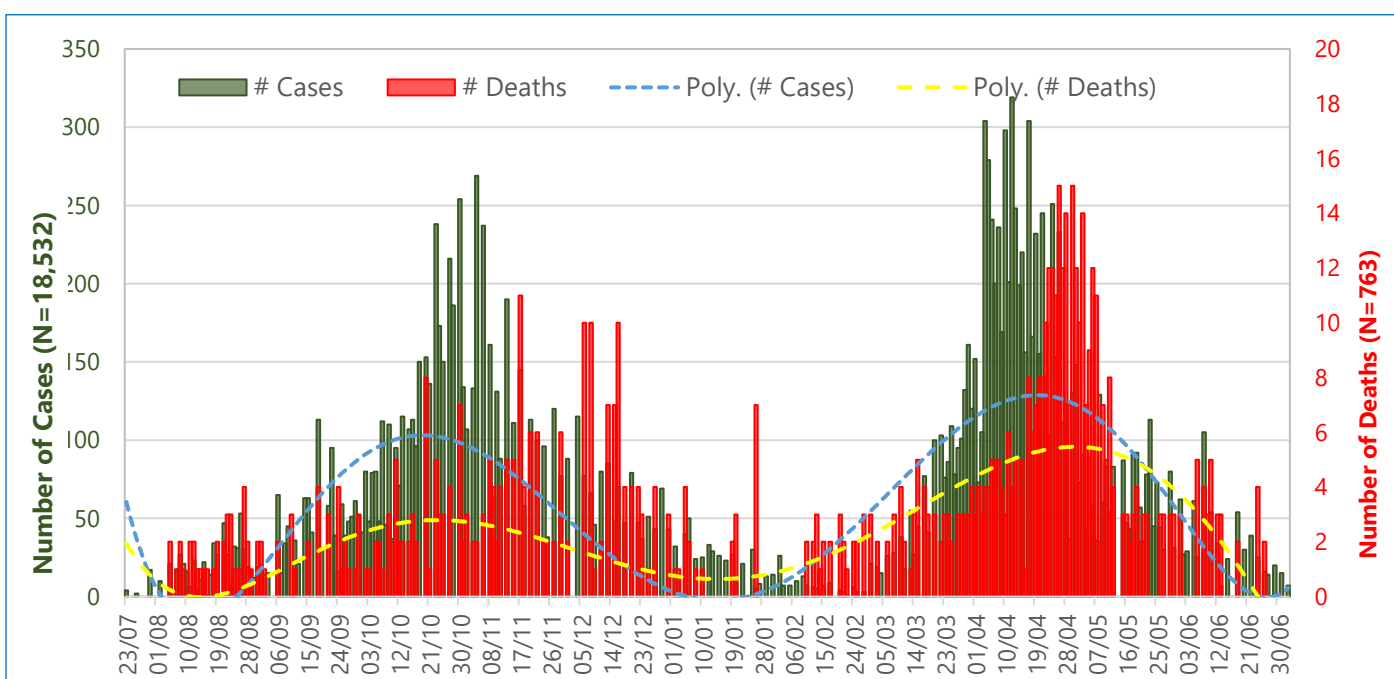
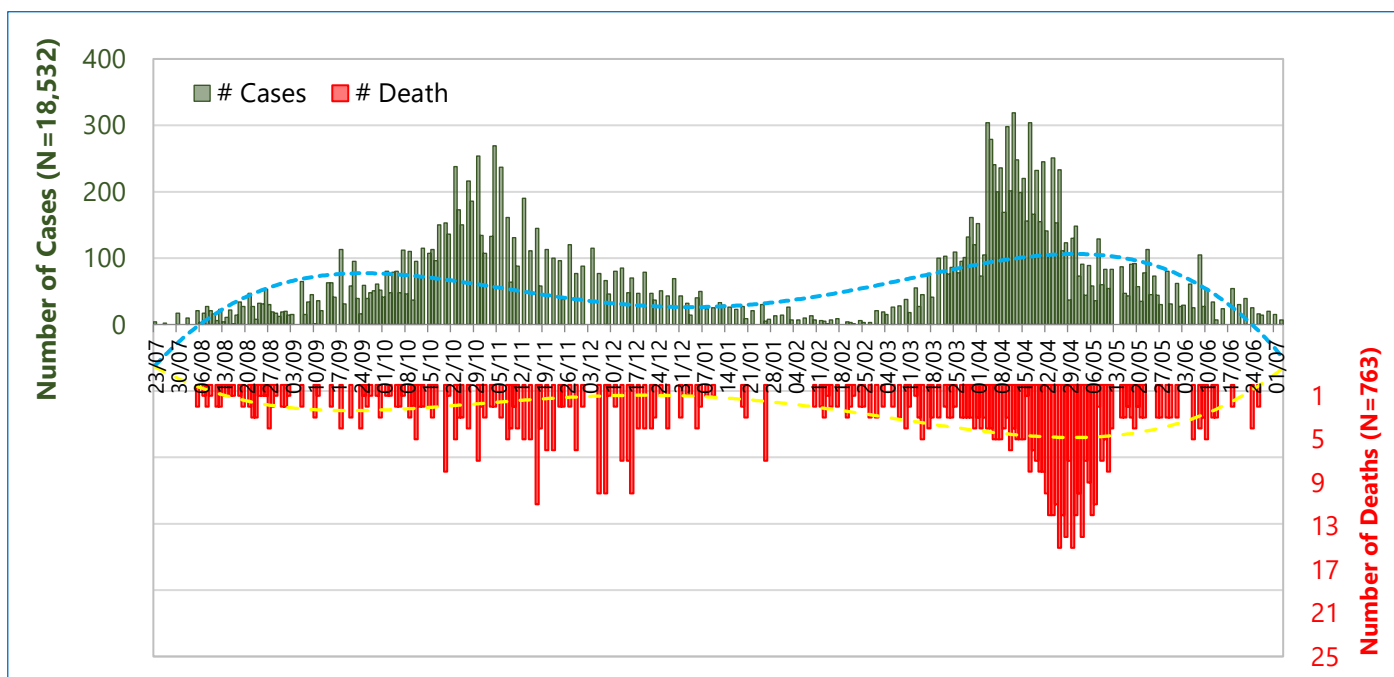
The figure below is showing the distribution of the weekly reported confirmed COVID-19 cases, 16 March 2020 – 05 July 2021, Syria.



In Northeast Syria, between 23 July 2020 and 05 July 2021, there were eighteen-thousand-five-hundred-thirty-two (18,532) COVID-19 cases³ confirmed by rt-PCR, including seven-hundred-sixty-three (763) related deaths. Case Fatality Ratio (CFR) is 4.1% (763/18,532).

During the same period, a total of 51,738 COVID-19 tests were conducted with the overall positivity rate of 35.8%. According to available data, health workers are representing 5.6% (1,046) among the total number of reported confirmed cases.

The figures below are showing the daily distribution of reported confirmed COVID-19 cases, 23 March 2020 – 05 July 2021, Northeast Syria (NES).

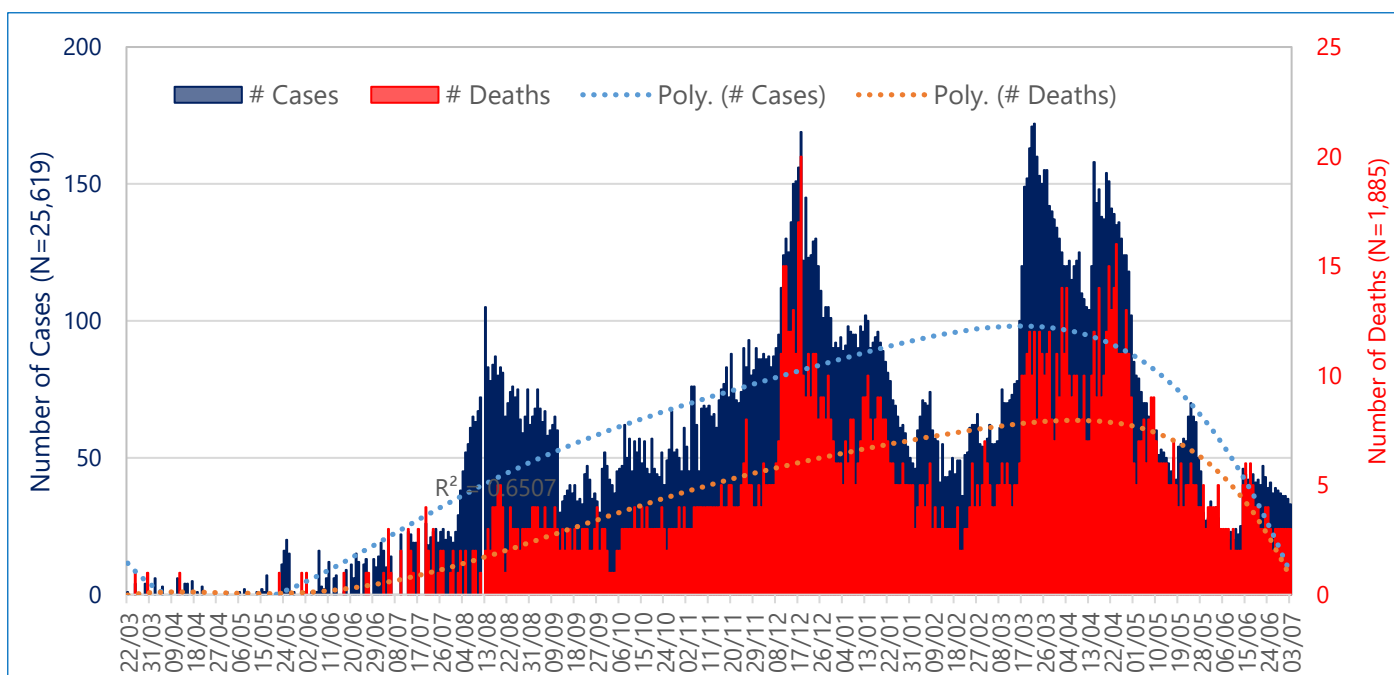
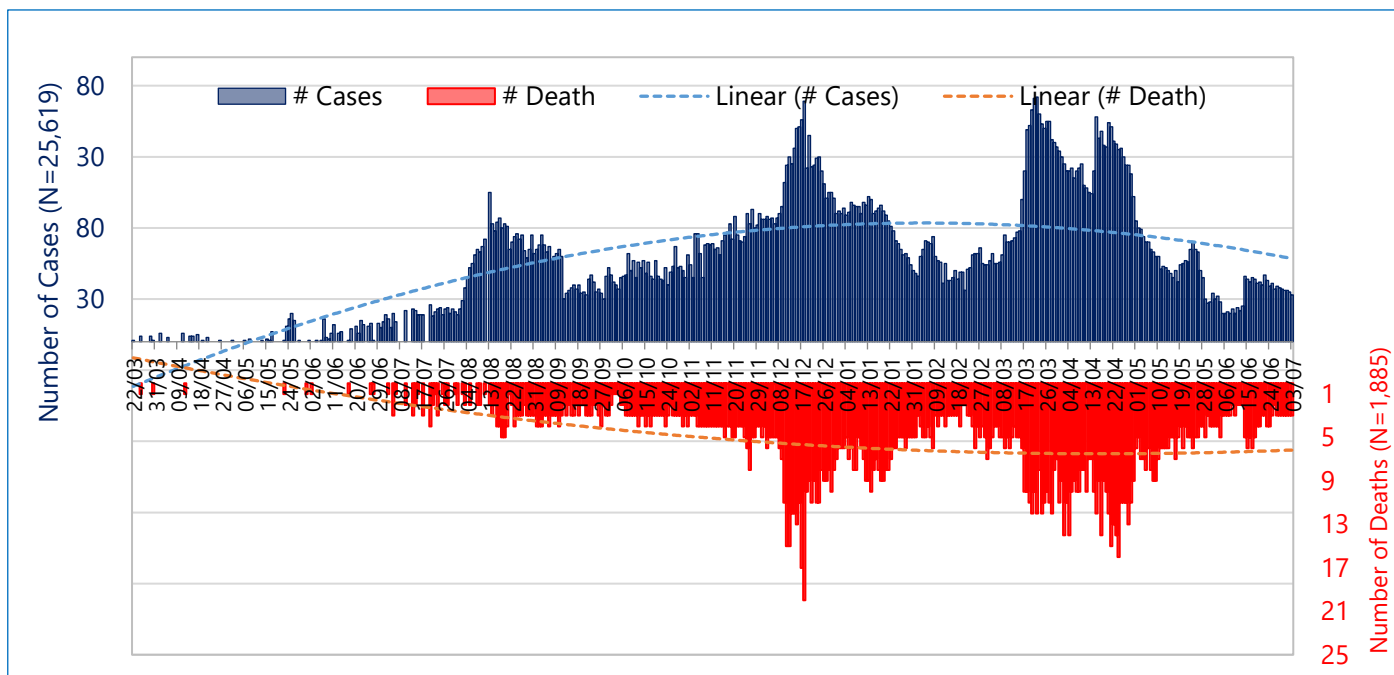


³ WHO Syria COVID-19 Situation Reports present official counts of confirmed COVID-19 as announced by the MOH on the indicated date. Difference in data between the WHO reports and other sources can result from using different cutoff times for the aggregation and reporting of the total number of new cases in the country.

2. Syria

Between 23 March 2020 and 05 July 2021, MOH there were twenty-five-thousand-six-hundred-nineteen (25,619) COVID-19 cases⁴ confirmed by rt-PCR, including one-thousand-eight-hundred-eighty-five (1,885) related deaths. Case Fatality Ratio (CFR)⁵ is 7.4% (1,885/25,619). In the last four epidemiological weeks (22 - 26) of 2021 in comparison to the previous epidemiological four weeks (17 -21), the number of new COVID-19 cases decreased by 22.2% (1,179 and 2,441 respectively) and the number of death cases decreased by 94.3% (122 and 237 respectively).

The figures below are showing the daily distribution of reported confirmed COVID-19 cases and deaths, 23 March 2020 – 05 July 2021, Syria.

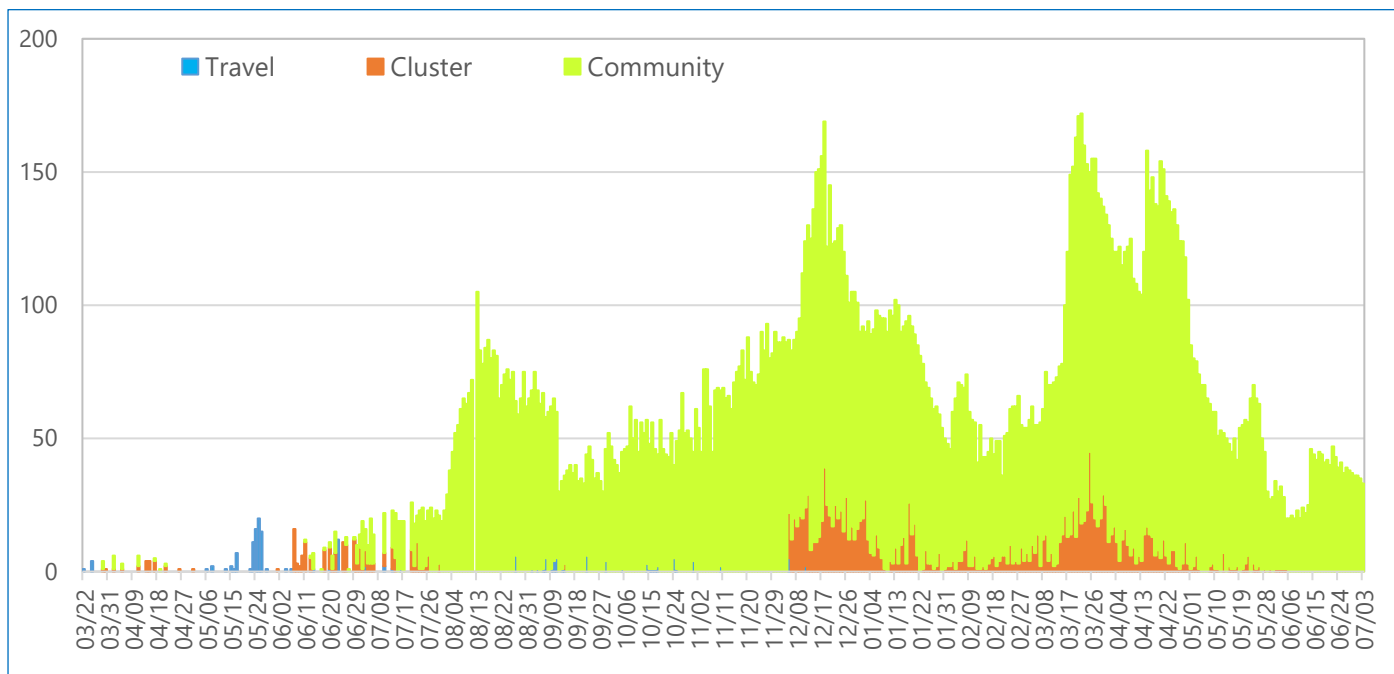


⁴ WHO Syria COVID-19 Situation Reports present official counts of confirmed COVID-19 as announced by the MOH on the indicated date. Difference in data between the WHO reports and other sources can result from using different cutoff times for the aggregation and reporting of the total number of new cases in the country.

⁵ CFR is not same as Infection fatality ratio (IFR) which is the proportion of individuals diagnosed with a disease who die from that disease and is therefore a measure of severity among detected cases, Estimating mortality from COVID-19, WHO scientific brief, 4 August 2020. <https://www.who.int/publications/i/item/WHO-2019-nCoV-Sci-Brief-Mortality-2020>.

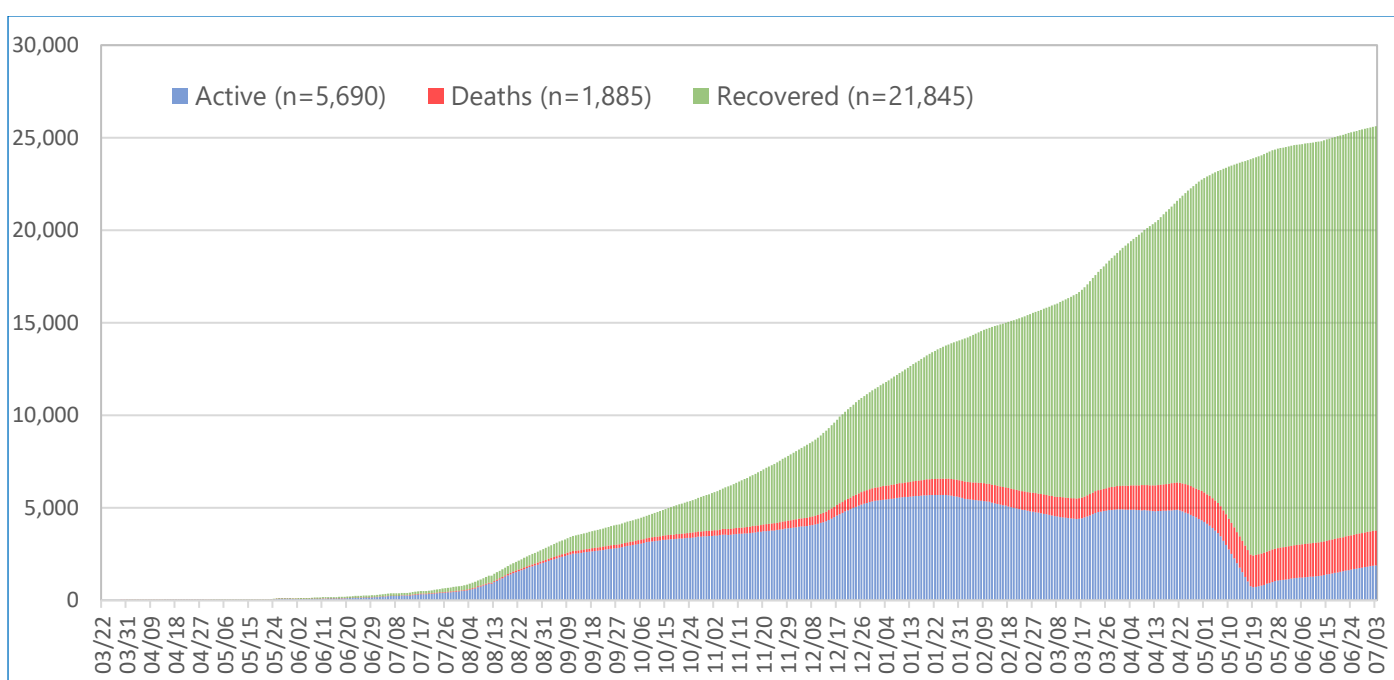
As of 05 July 2021, information on the mode of transmission was available on **100%** of confirmed reported COVID-19 cases (**25,619/25,619**). Of all cases, **92.1%** (23,605) were community transmission, **7.2%** (1,845) - contacts of confirmed cases (cluster) and **0.7%** (169) were imported cases.

The figure below is showing the mode of transmission of the reported confirmed COVID-19 cases, 23 March 2020 – 05 July 2021, Syria.



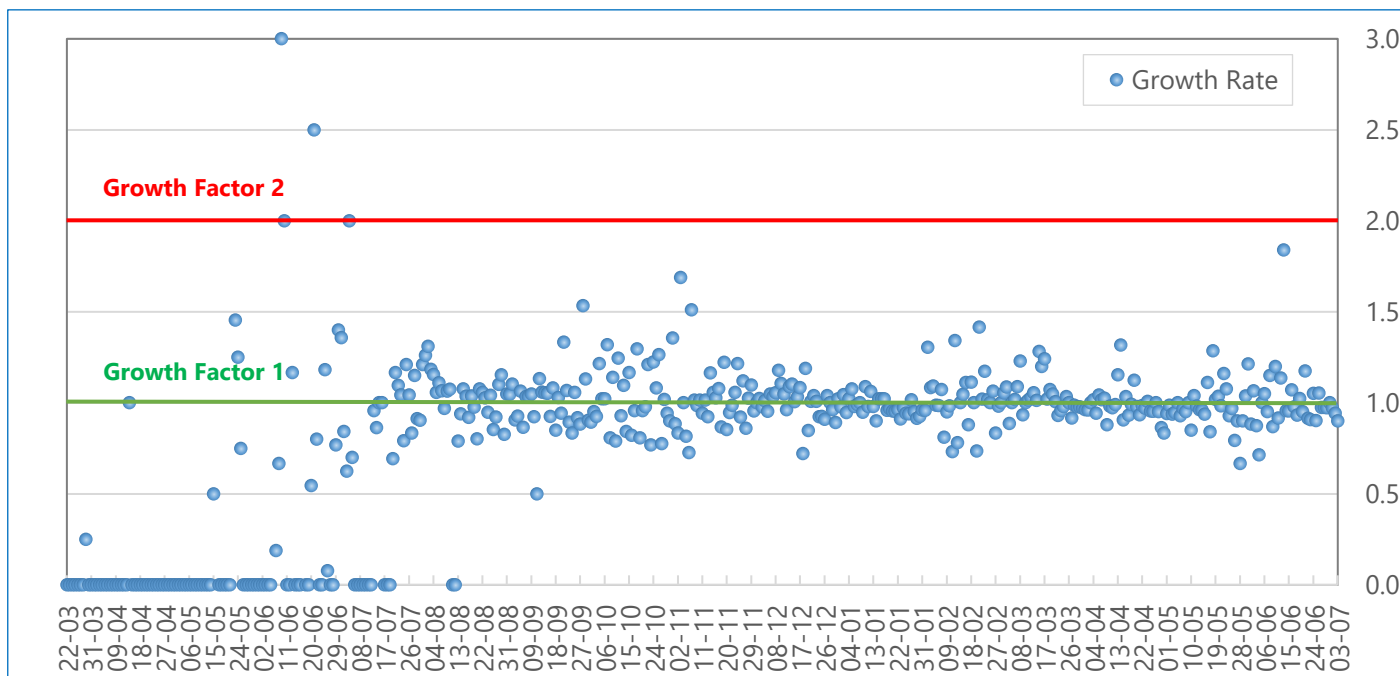
In the epidemiological week 26, 2021, the number of COVID-19 **weekly active** cases increased by **10.5%**, in comparison to the previous week (**1,889** and **1,710** respectively) and over the same period, the number of **recovered** COVID-19 cases decreased by **18.5%** (**64** and **54** respectively).

The figure below is showing the weekly outcomes of the reported confirmed COVID-19 cases, 23 March 2020 – 05 July 2021, Syria.



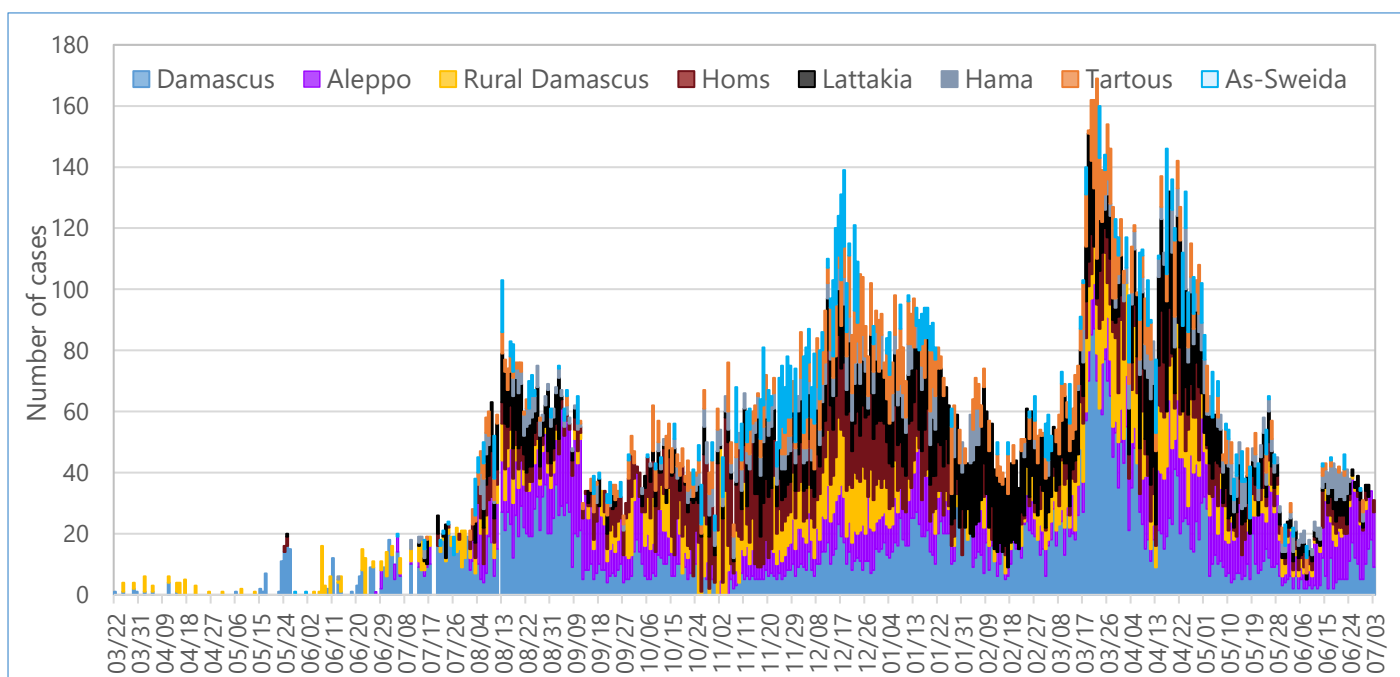
Growth factor (every day's number of new cases/numbers of new cases on the previous day) between **0** and **1** indicates a decline; when it is above 1 it signals an increase, and if it is persistently above 1 this could signify exponential growth.

The figure below is showing the Growth Factor of daily confirmed COVID-19 cases, 23 March 2020 – 05 July 2021, Syria.

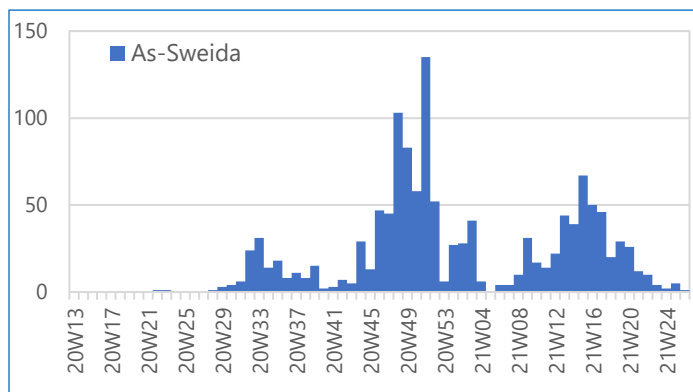
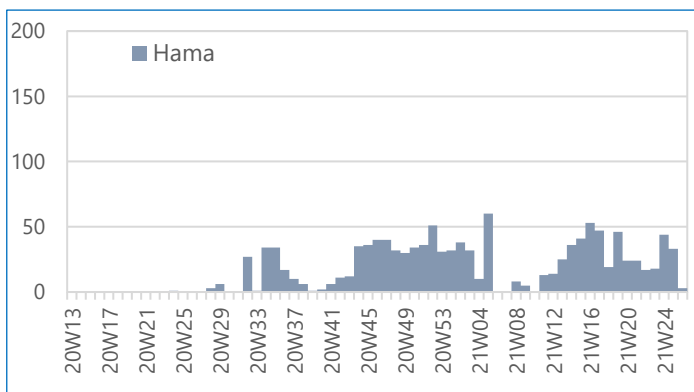
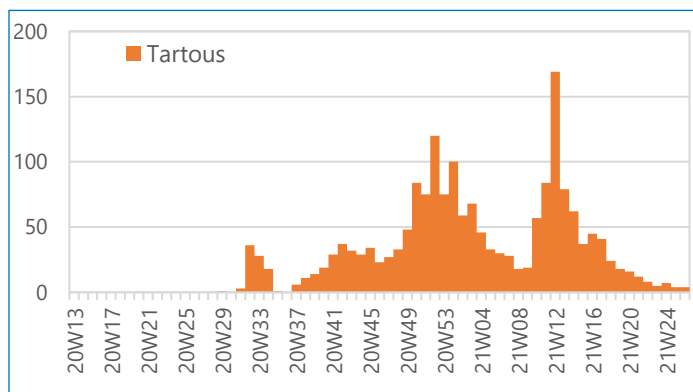
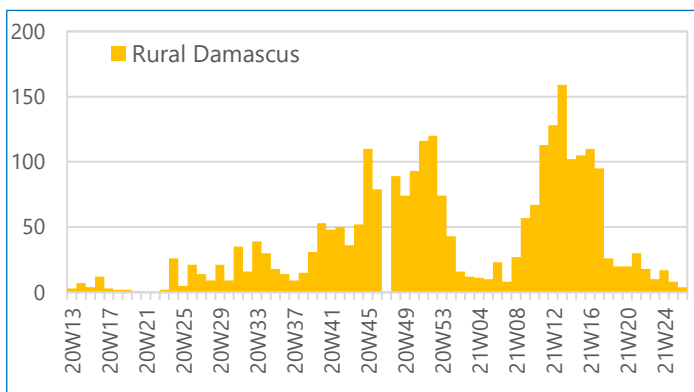
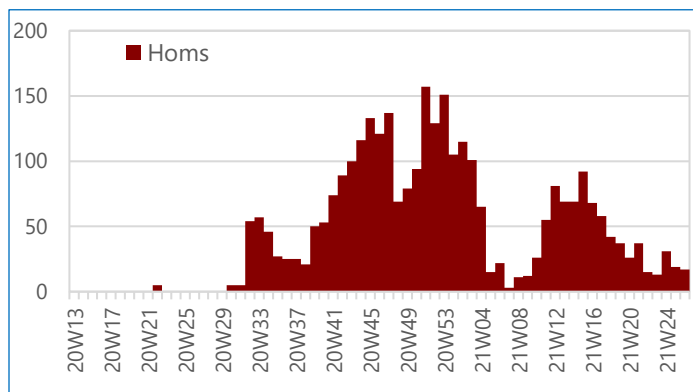
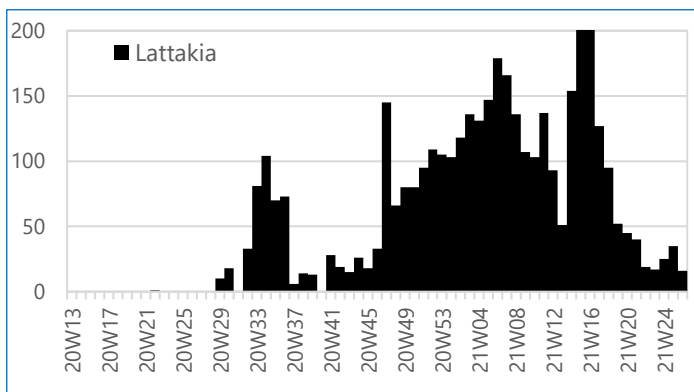
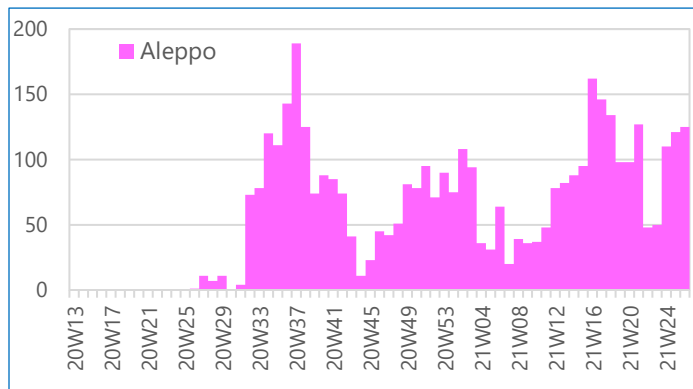
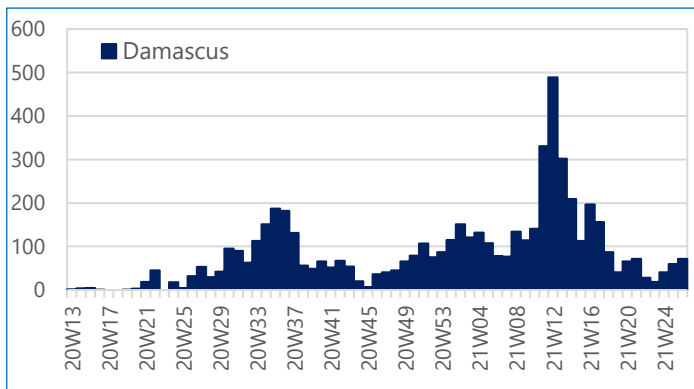


As of 05 July 2021, geographical distribution of confirmed reported COVID-19 cases was available on **100%** of cases (**25,619/25,619**). Of all cases, **22.0%** (5,633) reported from the **Damascus** governorate, followed by **15.2%** (3,972) from **Aleppo**, then **Lattakia - 15.2%** (3,896); **Homs - 11.8%** (3,026); **Rural Damascus - 10.1%** (2,581); **Tartous - 7.2%** (1,856); **Dar'a - 5.2%** (1,324); **As-Sweida; - 5.0%** (1,292); **Hama - 4.6%** (1,187); **Quneitra – 1.9%** (494), and the remaining **0.9%** (234), **0.4%** (109) and **0.1%** (24) are form **Deir-ez-Zor, Al-Hasakeh, and Ar-Raqqa** governorates, respectively.

The figure below is showing the daily distribution of reported confirmed COVID-19 cases per selected governorate, 23 March 2020 – 05 July 2021, Syria.

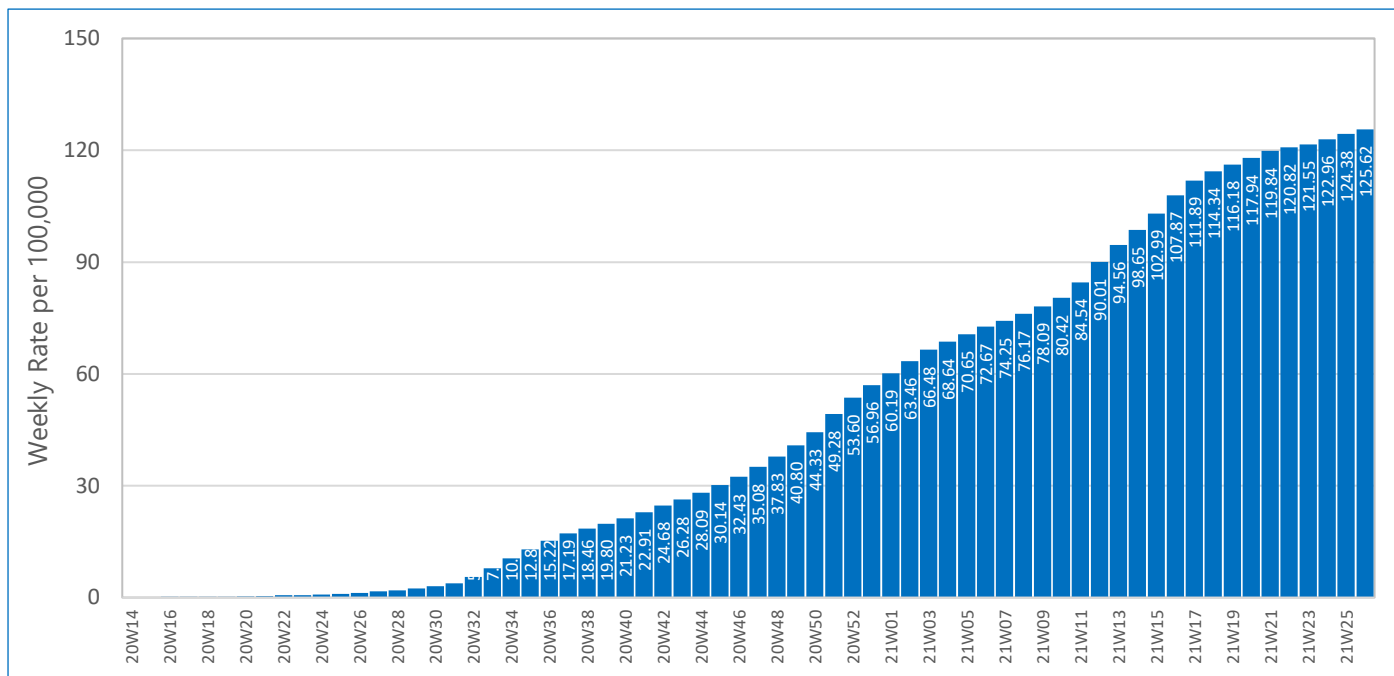


The figures below are showing the weekly distribution of reported confirmed COVID-19 cases and rolling seven-day average in selected governorates, 23 March 2020 – 05 July 2021, Syria.



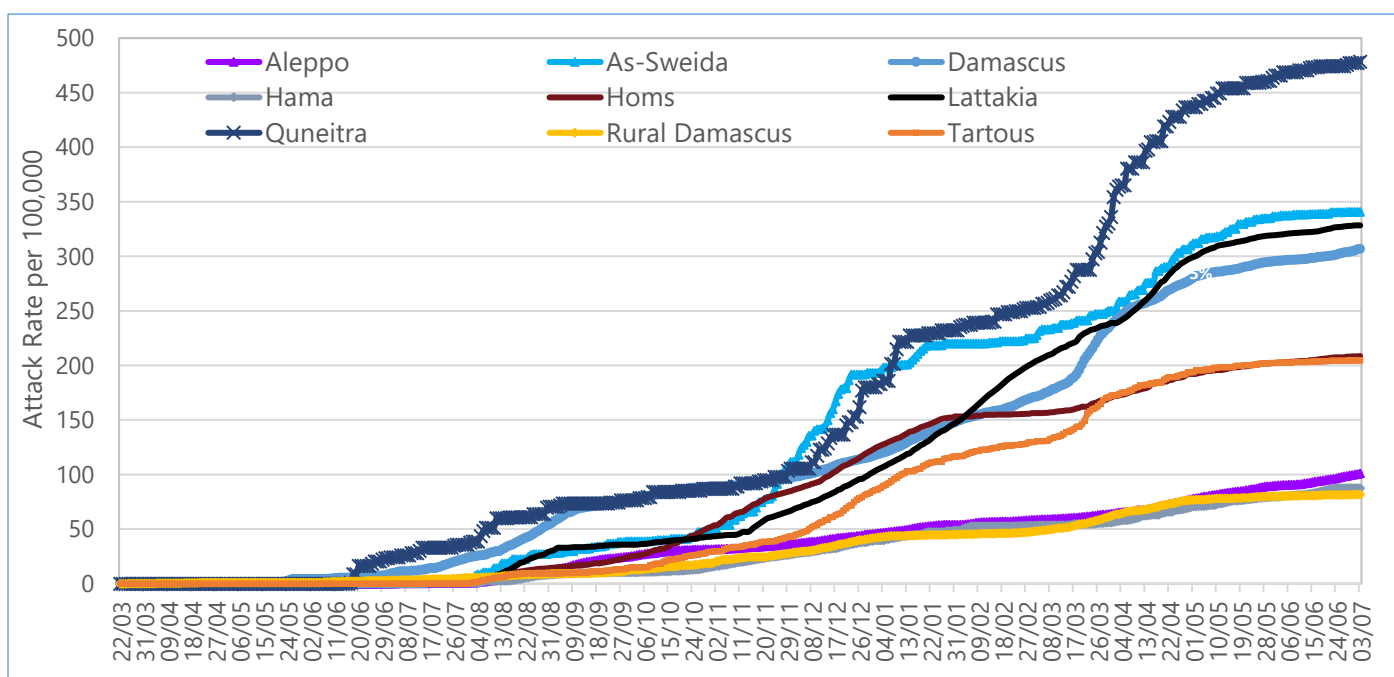
As of 05 July 2021, the overall attack rate (AR) in Syria is **342.8** per 100,000 and **100% (13/13)** of governorates, with the total population of 20,393,662 people, have reported confirmed COVID-19 cases. In the epidemiological week 26/2021, COVID-19 weekly AR increased by **1.0%** in comparison to the previous week (**125.6** and **124.4**) respectively.

The figure below is showing the weekly COVID-19 attack rate (AR) per 100,000, 23 March 2020 – 05 July 2021, Syria.



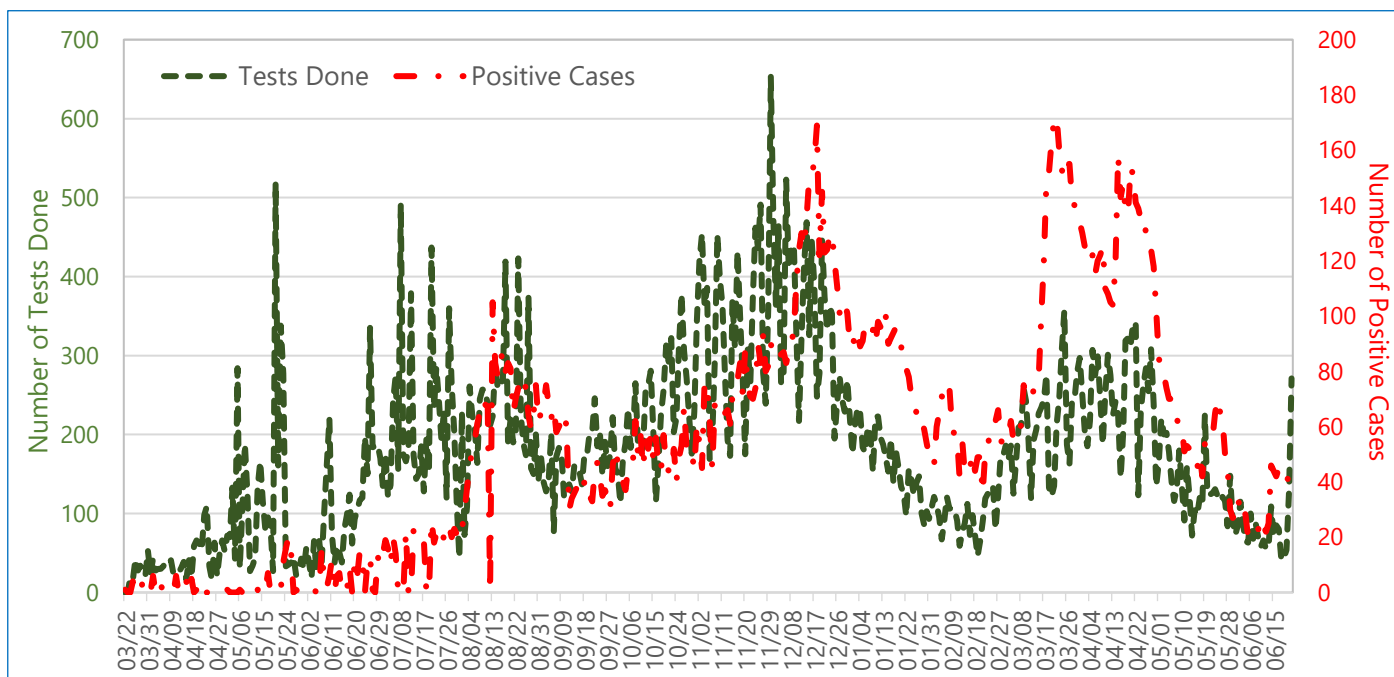
The highest AR is reported from **Quneitra (478.63/100,000)**, followed **As-Sweida** by governorate (**340.74/1,000,000**), **Lattakia** governorate (**328.36/100,000**), **Damascus** governorate (**306.91/100,000**), **Homs** governorate (**208.54/100,000**), **Tartous** governorate (**204.77/100,000**), **Dar'a** governorate (**130.41/100,000**), **Aleppo** governorate (**100.99/100,100**), **Rural Damascus** (**81.67/100,000**), **Hama** governorate (**87.77/100,000**), **Deir-ez-Zor** governorate (**31.57/100,000**), **Al-Hasakeh** governorate (**10.28/100,000**), and the lowest attack rate (**3.47/100,000**) in **Ar-Raqqa** governorate.

The following figure is showing the COVID-19 attack rate per 100,000 population in selected governorates, 23 March 2020 – 05 July 2021, Syria.



As of 05 July 2021, there are **24** functional PCR machines in 17 COVID-19 laboratories, out of them 8 COVID-19 laboratories (12 PCR machines) in public health facilities Syria, **3** laboratories (7 PCR machines including one GeneXpert) in NES + one laboratory at Qamishli hospital, and **5** laboratories (5 PCR machines) in NWS. According to the available date, between 23 March 2020 and 05 July 2021, a total of **290,280** COVID-19 tests with the overall positivity rate of **24.1%** and with overall testing rate of **1,324/100,000** in **whole of Syria**. Out of them **53.7%** (**155,928/290,280**) tested in **NWS**, **28.5%** (82,614) in **Syria** and **17.8%** (51,738) in NES. The analysis of data on the two variables (weekly number of tests and number of confirmed cases) in Syria showed correlation coefficient (**R**) between the two variables as **0.538** (specific measure that quantifies the strength of the linear relationship between two variables in a correlation analysis).

The graph below is showing the number of Samples tested and Positive samples, 23 March 2020 – 05 July 2021, Syria.



3. Useful COVID-19 links:

WHO Syria, COVID-19 Dashboard (English)

<https://app.powerbi.com/view?r=eyJrIjoiNmY5OGYzNDYtNjZhMy00MmWlyLWlyMzctYzc4Mml3ZDNIODk5IiwidCI6ImY2MTBjMGl3LWJkMjQ0NGl3OS04MTBiLTNkYzI4MGFmYjU5MCIslmMiOj9>

WHO Syria, COVID-19 Dashboard (Arabic):

<https://app.powerbi.com/view?r=eyJrIjoiNTA0NWxZmYtMDJiMC00ZWU0LTllNTktZTViZiYwYThjZmUzIiwidCI6ImY2MTBjMGl3LWJkMjQ0NGl3OS04MTBiLTNkYzI4MGFmYjU5MCIslmMiOj9>

COVID-19 situation in EMRO Region reports: <http://www.emro.who.int/health-topics/corona-virus/index.html>

Latest global WHO Weekly epidemiological update on COVID-19 - 29 June 2021:

<https://www.who.int/publications/m/item/weekly-epidemiological-update-on-covid-19---29-june-2021>

WHO COVID-19 Vaccines: <https://www.who.int/emergencies/diseases/novel-coronavirus-2019/covid-19-vaccines>

WHO COVID-19 Country and Technical Guidance: <https://www.who.int/emergencies/diseases/novel-coronavirus-2019/technical-guidance>

WHO COVID-19 online training course series, "Responding to COVID-19": <https://openwho.org/channels/covid-19>.