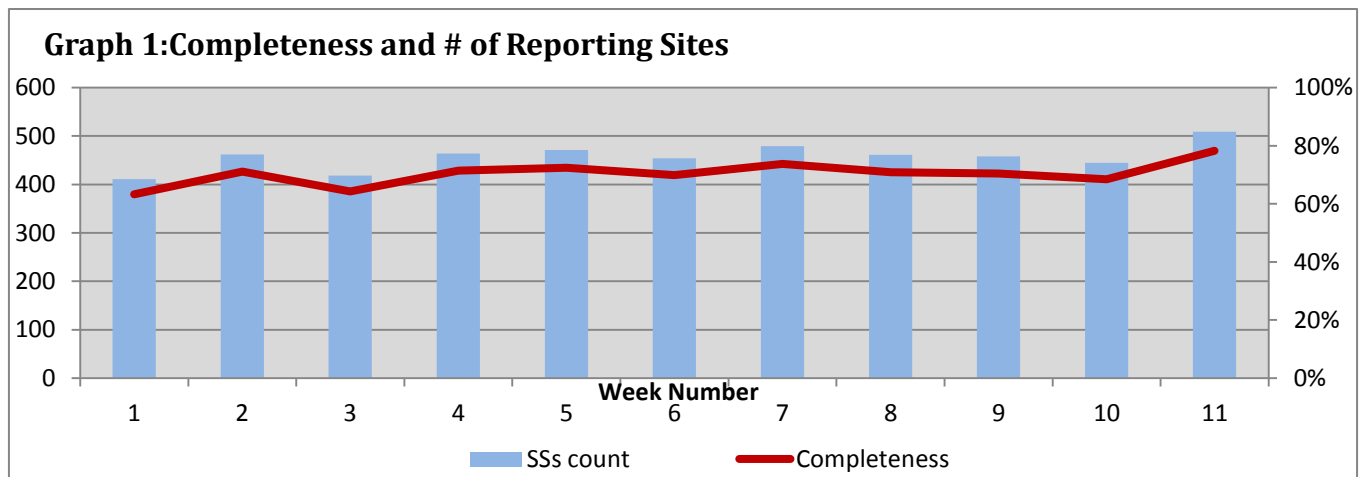


Highlights:

- ❖ 2 AFP cases were detected in Aleppo and Hamah.
- ❖ Further increase in number of AJS cases was noticed this week.
- ❖ A slight decrease in number of SARI cases reported this week.

❖ Completeness& Timeliness of Reporting

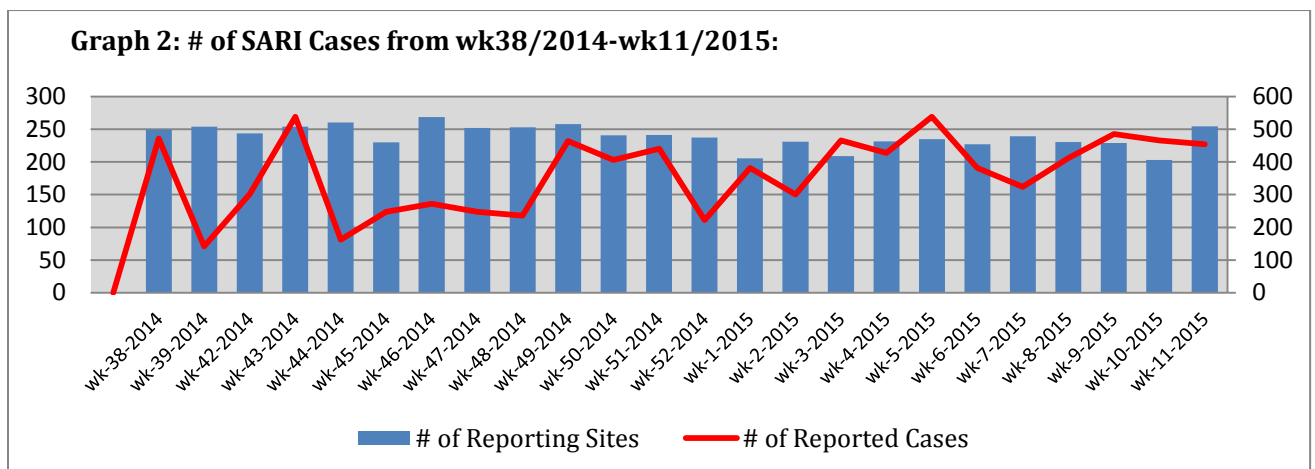
- ❖ The overall completeness of reporting was 78%; (509 out of total 650 EWARS sentinel sites). (See Graph 1). 14 governorates have reported this week.



- ❖ Timeliness of reporting is 86%.

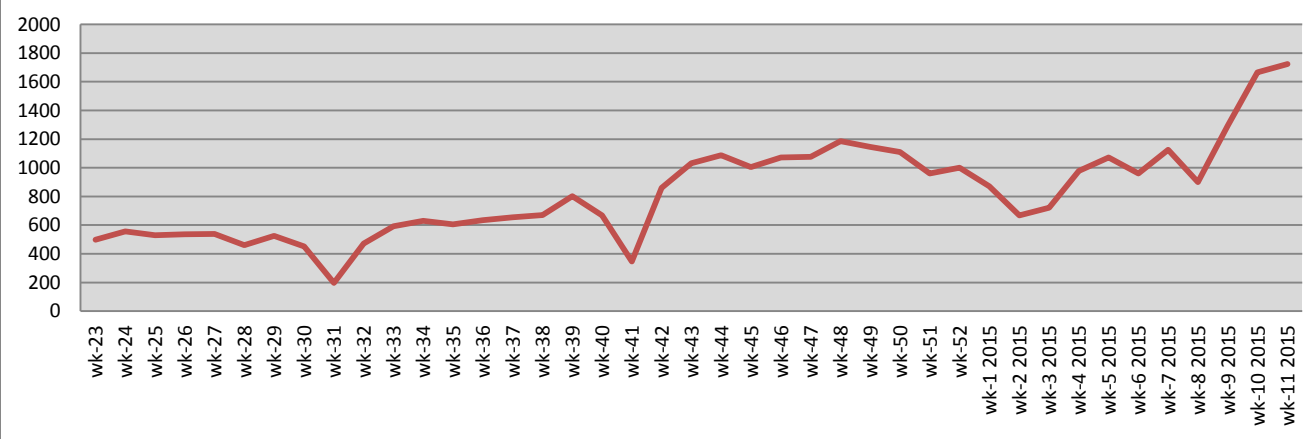
❖ The Morbidity Cases

- ❖ Out of the 155,464 total consultations, a total of 18,166 cases were reported; of which 9,727 cases were Influenza like Illness (53%), 3,672 cases were Acute Diarrhoea (20%), 1,723 cases of AJS, 227cases of Sever Acute Respiratory Infection,75cases of Bloody Diarrhoea, 50 cases of Suspected Measles, 16 cases of Meningitis, and 2 AFP cases.
- ❖ Below chart reflects the trend in the number of SARI cases in 2014 and 2015 in the period between week 38 - 2014 and week 11-2015.

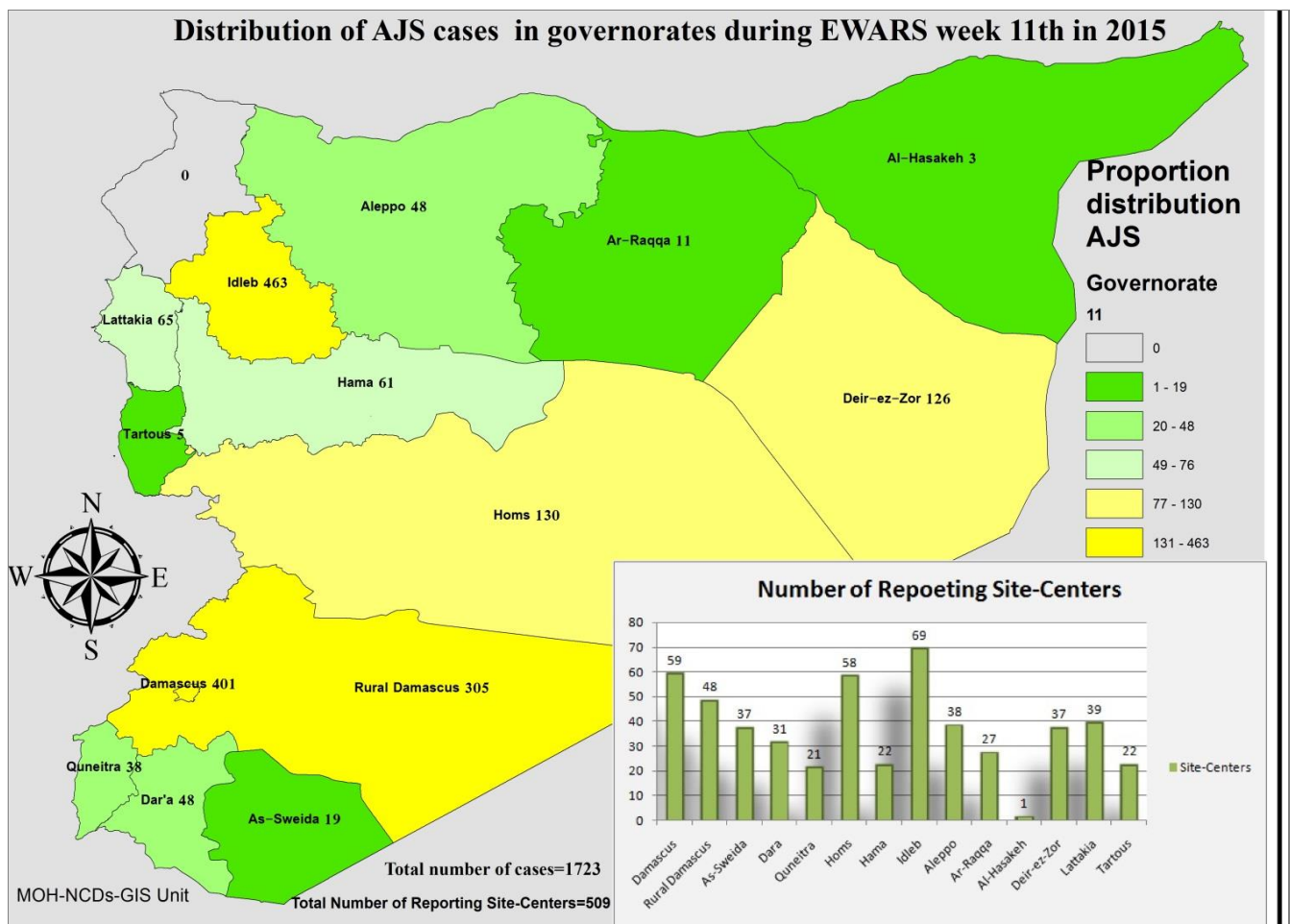


- ❖ Graph 3 displays the trend of the (33,881) AJS cases between wk23/2014-wk11/2015. The distribution of the cases per governorates shows that Idleb , Damascus, and Rural Damascus have the highest number of cases for this week.

Graph 3: Trend of AJS reported cases from wk23/2014-wk11/2015:



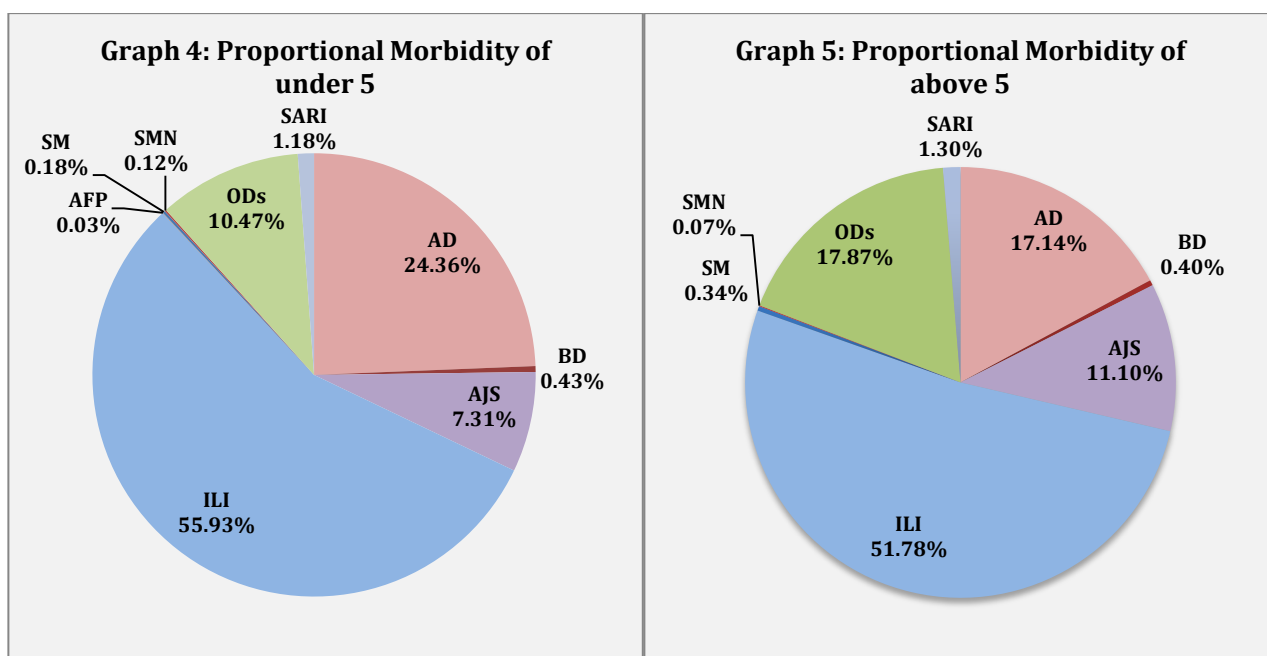
- ❖ Below map display the distribution of AJS cases for week 11 , per governorate:



- ❖ In total, 2,674 cases were reported as “other diseases”. The most important diseases reported within this group were: 470 cases of Leishmaniasis (most of which were reported from Idleb 37% ,and Hamah 25%),

127 cases of Typhoid (most of which were reported from Rural Damascus 47%, and Deir Ezore 28%), 79 cases of Brucellosis (most of which were reported from Deir Ezore 53% and Damascus 19%), 22 cases of TB, and 12 cases of Pertussis.

- ❖ 57% of the cases were distributed among ≥ 5 age group.
- ❖ ILI consists (55.93%) of the cases among <5 and (51.78%) among ≥ 5 , while AD cases consists (24.36%) among <5 and (17.14%) among ≥ 5 .
- ❖ Graphs 4 and 5 below show the proportional morbidity among < 5 and ≥ 5 year age groups respectively.



- ❖ 51% of cases were distributed among males.

❖ **The Response**

AFP: Stool samples were collected from the AFP cases and sent to the reference lab in Damascus. A new national vaccination campaign will be implemented between 22th and 26th March.

AJS and water and food borne diseases: An awareness campaign about food and water borne diseases continued in public health centres, the IDPs shelters, schools, and through media (TV programmes, radio programmes, newspapers ...). Line list of cases started to be collected from different health facilities in the most affected governorates to provide evidence needed on the issue of vaccine procurement. A brochure for raising the awareness on the prevention of hepatitis A has been developed. 100,000 copies will be

printed to be distributed among IDPs and school children. Besides, health educational sessions were scheduled to take place in all health centers, schools, and IDPs focusing on prevention measures against water and food borne diseases and the importance of personal hygiene especially hand washing.

Meningitis: Meningitis cases detected are not clustered. Cases were managed properly; and investigation forms were filled for some cases but not all; it shows that most of the cases are viral meningitis not bacterial. Preventive therapy was provided as necessary for contacts of the probable bacterial meningitis cases.

Table-1: Distribution of cases per age group, and by Governorate-week-11, 2015:

Code	age group	Idleb	Hassaka	Raqa	Sweida	Qunaitra	Lattakia	Aleppo	Hamah	Homs	Daraa	Damascus	DierEzor	Rural Damascus	Tartous	Grand Total
AD	< 5	269	28	40	76	77	185	97	96	62	172	236	258	235	52	1883
	≥ 5	258	8	17	107	129	83	69	63	60	130	336	238	229	62	1789
BD	< 5	0	0	0	5	4	3	0	1	0	7	5	6	2	0	33
	≥ 5	0	12	0	4	8	4	0	0	0	10	3	0	1	0	42
AWD	< 5	0	0	0	0	0	0	0	0	0	0	0	0	0	0	0
	≥ 5	0	0	0	0	0	0	0	0	0	0	0	0	0	0	0
AJS	< 5	252	1	6	3	10	23	20	16	60	7	66	64	36	1	565
	≥ 5	211	2	5	16	28	42	28	45	70	41	335	62	269	4	1158
ILI	< 5	460	0	9	354	79	614	642	89	79	207	432	564	448	346	4323
	≥ 5	711	0	9	498	224	409	421	151	119	299	943	530	543	547	5404
AFP	< 5	0	0	0	0	0	0	1	1	0	0	0	0	0	0	2
	≥ 5	0	0	0	0	0	0	0	0	0	0	0	0	0	0	0
SM	< 5	7	0	0	0	0	1	0	2	0	0	3	1	0	0	14
	≥ 5	29	0	2	0	0	0	0	0	0	1	1	3	0	0	36
SMN	< 5	4	0	0	1	0	2	0	1	1	0	0	0	0	0	9
	≥ 5	4	0	0	0	0	0	0	1	0	0	2	0	0	0	7
SARI	< 5	5	0	0	13	0	1	0	37	0	0	26	9	0	0	91
	≥ 5	4	0	0	15	0	2	0	21	0	0	92	1	1	0	136
Others	< 5	88	0	5	2	92	26	236	30	16	26	43	66	176	3	809
	≥ 5	248	0	6	13	123	161	310	152	69	72	170	157	373	11	1865
Total Sum of < 5		1085	29	60	454	262	855	996	273	218	419	811	968	897	402	7729
Total Sum of ≥ 5		1465	22	39	653	512	701	828	433	318	553	1882	991	1416	624	10437
Total		2550	51	99	1107	774	1556	1824	706	536	972	2693	1959	2313	1026	18166