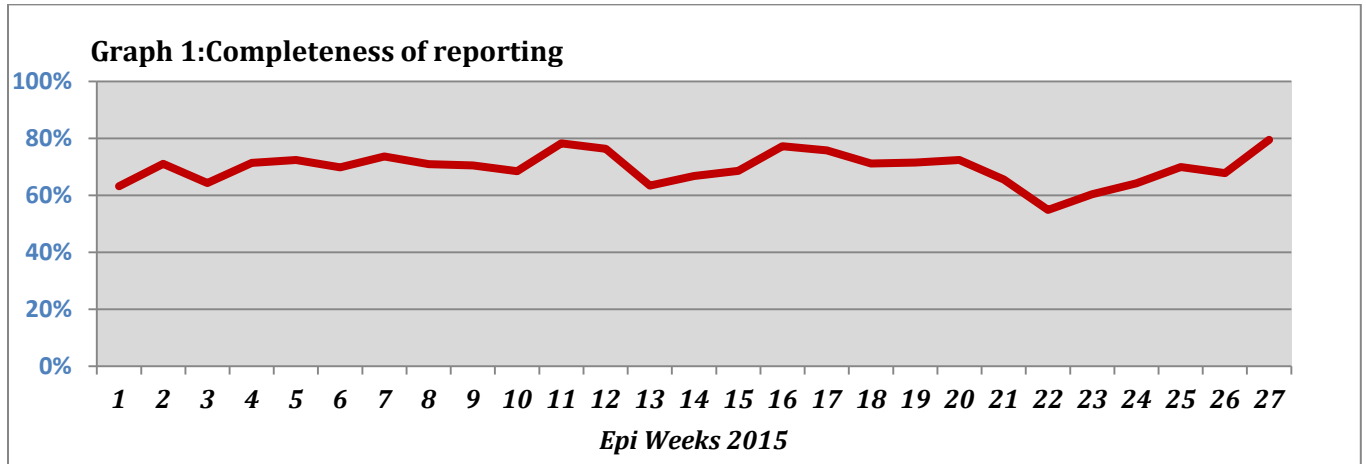


Highlights:

❖ 6 AWD were detected in Rural Damascus.

❖ Completeness& Timeliness of Reporting

❖ The overall completeness of reporting was 79%; (720 out of total 906 EWARS sentinel sites).(See Graph 1). 14 governorates have reported this week.

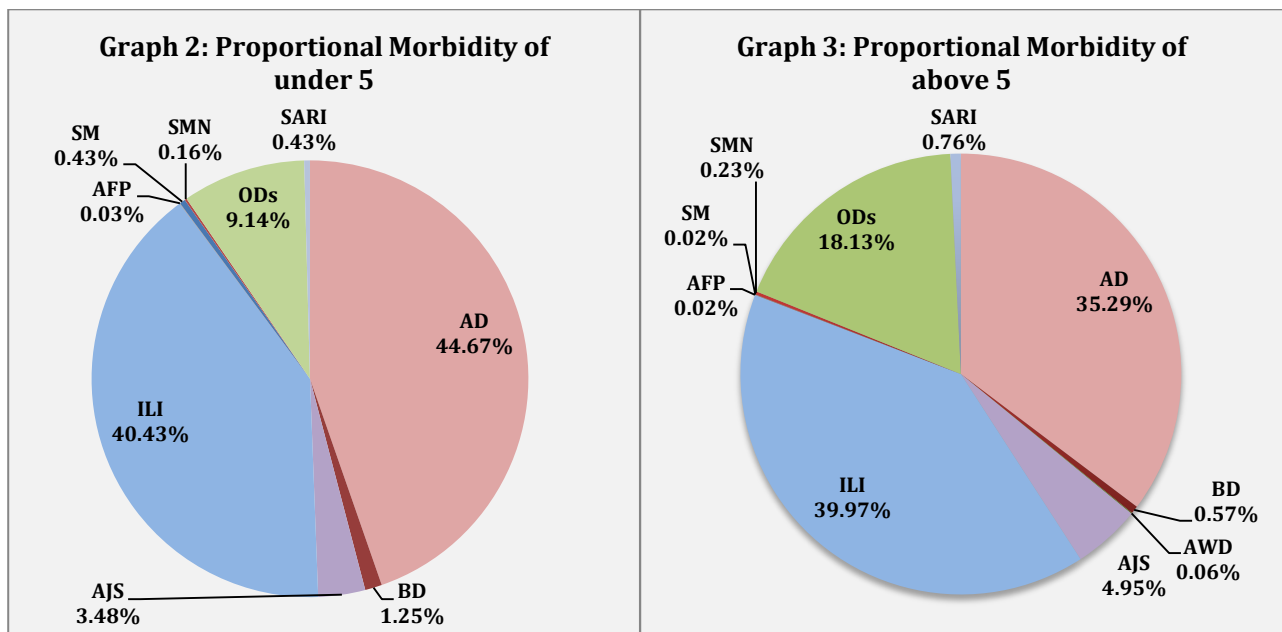


❖ Timeliness of reporting is 72%.

❖ The Morbidity Cases

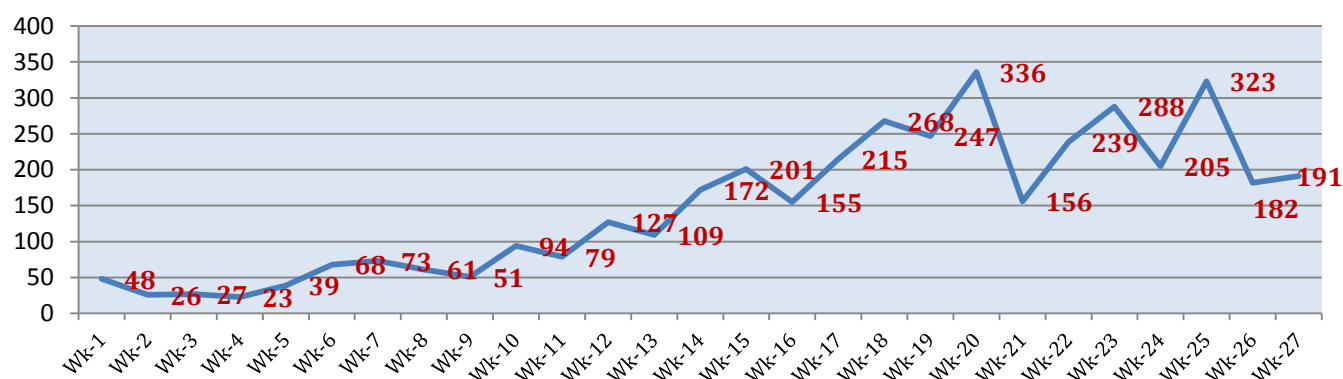
❖ Out of the 171,468 total consultations, a total of 17,038 EWARS notifiable cases were reported; of which 6,738 cases were Acute Diarrhoea (40%) 6,846 cases were Influenza like Illness (40%), 729 cases of AJS, 150 cases of Bloody Diarrhoea, 104 cases of Sever Acute Respiratory Infection, 35 cases of Suspected Measles, 33 cases of Meningitis, 6 cases of AWD and 4 AFP cases.

❖ Graphs 2 and 3 below show the proportional morbidity among < 5 and ≥ 5 year age groups respectively.

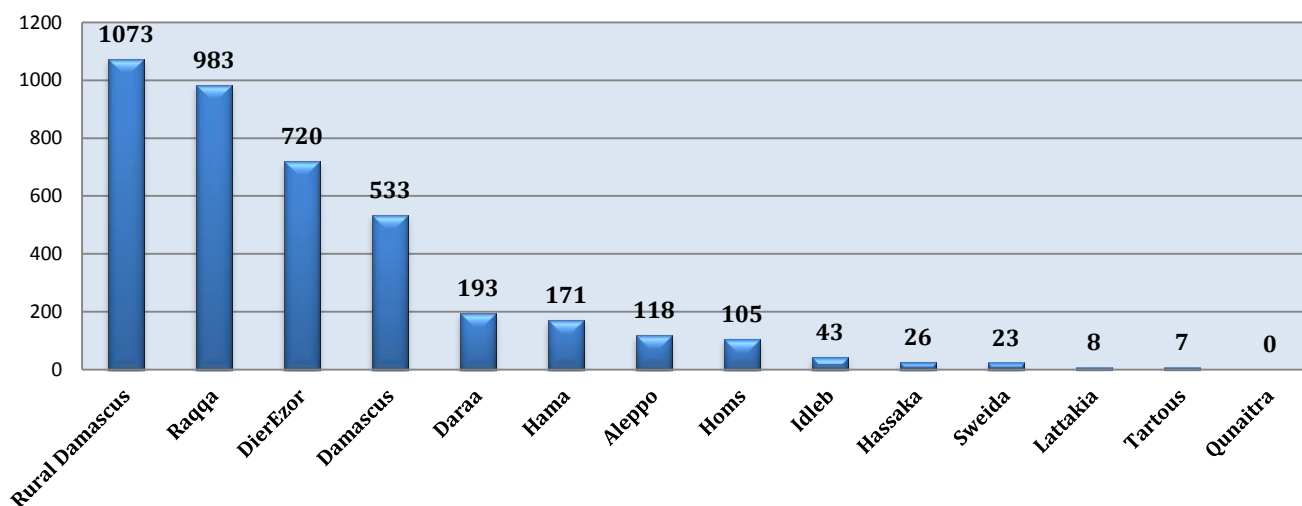


- ❖ AD constitutes (44.67%) among < 5 and (35.29%) among ≥ 5, while ILI constitutes (40.43%) of the cases among <5 and (39.97%) among ≥ 5.
- ❖ 51% of cases were among males. 55% of the cases were among ≥5 age group.
- ❖ In total, 2,393 cases were reported as “other diseases”. The most important diseases reported within this group were: 298 cases of Leishmaniasis (most of which were reported from Idleb 36%, Hamah 23%, and Damascus 16%), 191 cases of Brucellosis (most of which were reported from Rural Damascus 47%, Damascus 18% and DierEzor 12%), 138 cases of Typhoid (most of which were reported from DierEzor 50%, Rural Damascus 22% and Hama 7%), 39 cases of Pertussis, and 22 cases of TB.
- ❖ Graph 4 and 5 below show the trend analysis of Brucellosis cases reported from all governorates and the distribution of cases per governorates respectively. It shows that Rural Damascus, Raqqa and DierEzor have the highest number of cases.

Graph 4: Trend analysis of Brucellosis Cases between WK1-WK27



Graph 5: Distribution of Brucellosis Cases between WK1-WK27 per governorate



❖ The Response

Acute flaccid paralysis: Stool samples were collected from the AFP cases and sent to the reference lab in Damascus. The last round of Polio national vaccination campaign was implemented between 31st May and 4th June. The annualized rate is 3.2 up to this week.

Acute Watery Diarrhoea: the cases were managed properly; no samples were collected as the cases were detected in a besieged area (Douma). Rapid diagnostic kits for cholera were provided to SARC to be delivered to SARC branch inside Douma so that rapid test for cholera can be conducted for the stool on the spot.

Bloody Diarrhoea: No culture for the stool samples was performed. WHO focal point (with the help of some volunteers) in Deir Ezore conducted health educational sessions about water boiling for the families in the affected area. In addition, essential medicines to treat the cases were provided to health centers.

Measles: Blood samples have been collected from some cases and sent to the reference lab in Damascus.

Brucellosis: Several workshops on detecting, laboratory diagnosis and treatment of Brucellosis are being conducted at governorate level.

Meningitis: Cases were managed according to the national protocol; and investigation forms were filled for some cases but not all; it shows that most of the cases are viral meningitis not bacterial. Preventive therapy was provided as necessary for contacts of the probable bacterial meningitis

Table-1: Distribution of cases per age group, and by Governorate-week-27, 2015:

Code	age group	Idleb	Hassaka	Raqqa	Sweida	Qunaitra	Lattakia	Aleppo	Hama	Homs	Daraa	Damascus	DierEzor	Rural Damascus	Tartous	Grand Total	
AD	< 5	134	138	137	146	83	508	394	186	79	160	480	447	471	93	3456	6738
	≥ 5	96	60	41	221	98	676	296	170	57	135	459	349	466	158	3282	
BD	< 5	0	27	0	5	1	5	0	0	0	8	9	39	3	0	97	150
	≥ 5	0	7	0	3	6	0	0	0	0	9	3	22	3	0	53	
AWD	< 5	0	0	0	0	0	0	0	0	0	0	0	0	0	0	0	6
	≥ 5	0	0	0	0	0	0	0	0	0	0	0	0	6	0	6	
AJS	< 5	57	1	11	1	4	33	49	12	21	0	22	19	38	1	269	729
	≥ 5	53	0	9	3	12	34	125	31	18	3	89	24	55	4	460	
ILI	< 5	197	38	0	76	167	794	434	67	22	34	312	455	248	284	3128	6846
	≥ 5	166	53	0	118	303	814	301	110	23	45	498	455	400	432	3718	
AFP	< 5	0	0	0	0	0	0	2	0	0	0	0	0	0	0	2	4
	≥ 5	0	0	0	0	0	0	1	0	0	0	1	0	0	0	2	
SM	< 5	2	0	6	5	0	7	0	1	0	1	1	2	8	0	33	35
	≥ 5	0	0	0	0	0	0	0	0	0	0	0	2	0	0	2	
SMN	< 5	0	0	3	2	0	0	0	1	0	0	2	0	4	0	12	33
	≥ 5	0	0	1	2	0	0	0	5	0	0	4	0	8	1	21	
SARI	< 5	7	0	0	0	0	0	0	10	0	0	10	4	2	0	33	104
	≥ 5	8	4	0	7	0	1	1	6	0	0	27	3	14	0	71	
Others	< 5	122	3	16	8	56	9	236	22	4	12	32	80	100	7	707	2393
	≥ 5	146	0	8	15	100	134	328	126	41	25	250	185	308	20	1686	
Total Sum of < 5		519	207	173	243	311	1356	1115	299	126	215	868	1046	874	385	7737	17038
Total Sum of ≥ 5		469	124	59	369	519	1659	1052	448	139	217	1331	1040	1260	615	9301	
Total		988	331	232	612	830	3015	2167	747	265	432	2199	2086	2134	1000	17038	