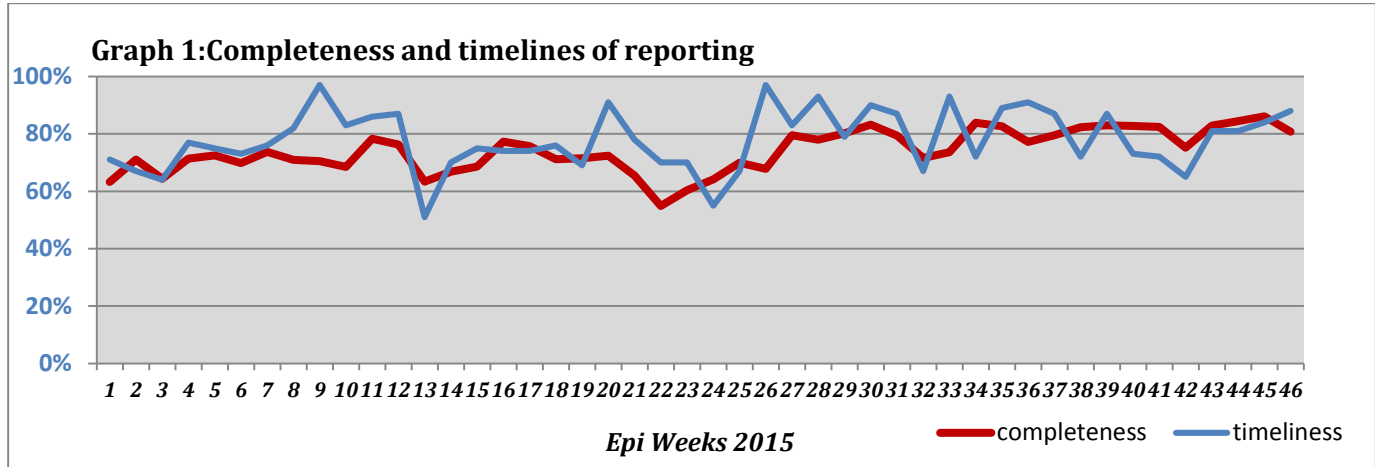


**Highlights:**

- ❖ A slight increase in the number of SARI cases have been noticed for this week.
- ❖ The increase in Pertussis cases in DierEzor continued for this week

**❖ Completeness& Timeliness of Reporting**

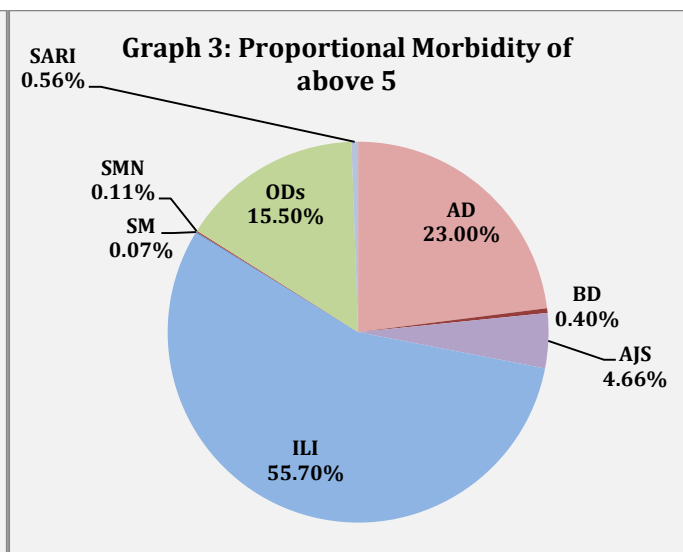
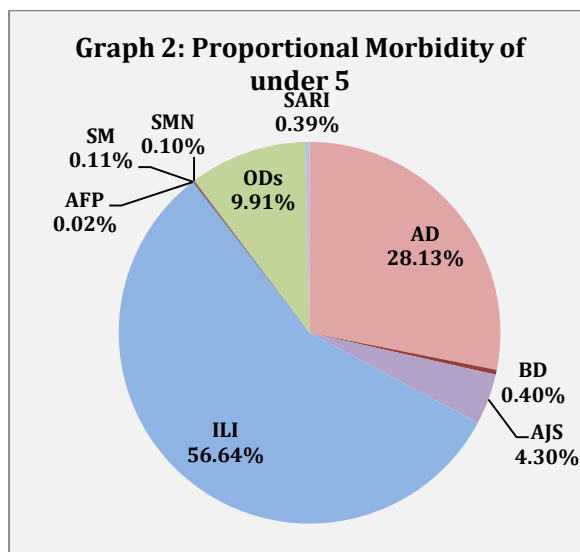
- ❖ The overall completeness of reporting was 81%; (799 out of total 990 EWARS sentinel sites). (See Graph 1). 14 governorates have reported this week.



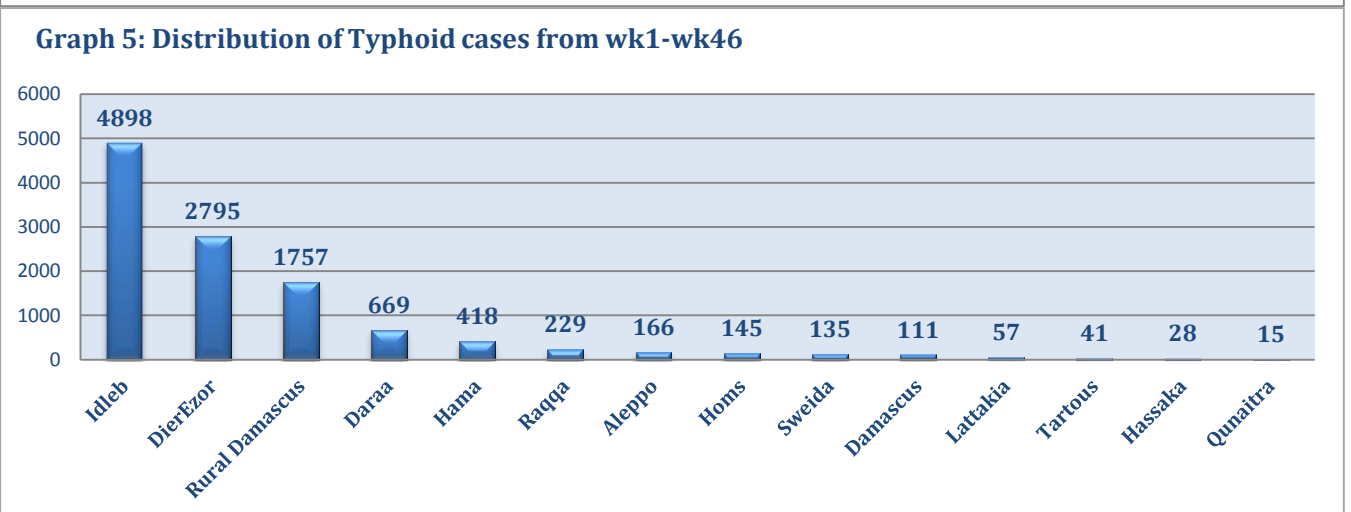
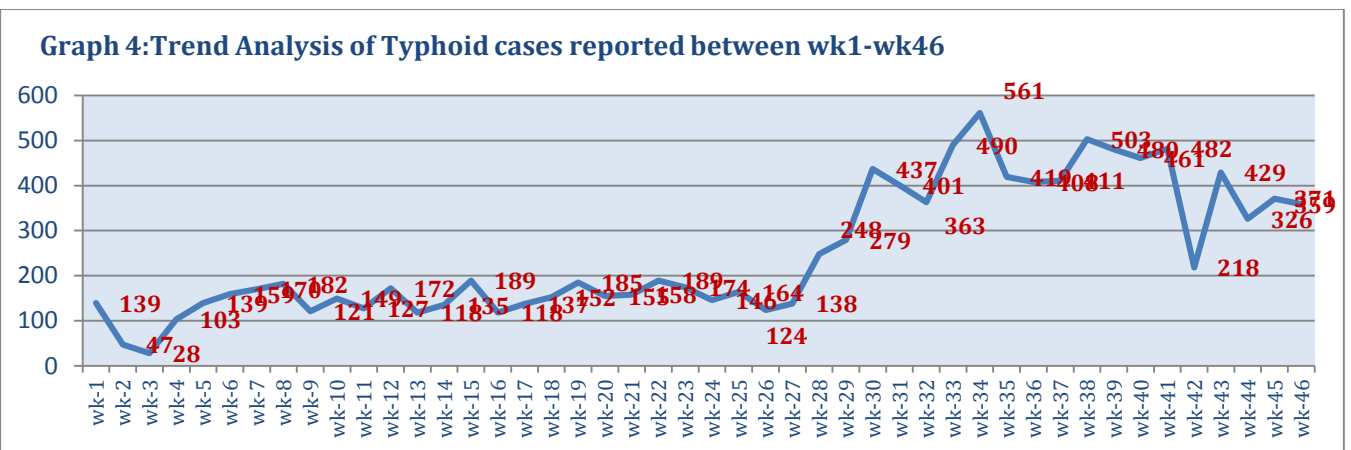
- ❖ Timeliness of reporting is 88%.

**❖ The Morbidity Cases**

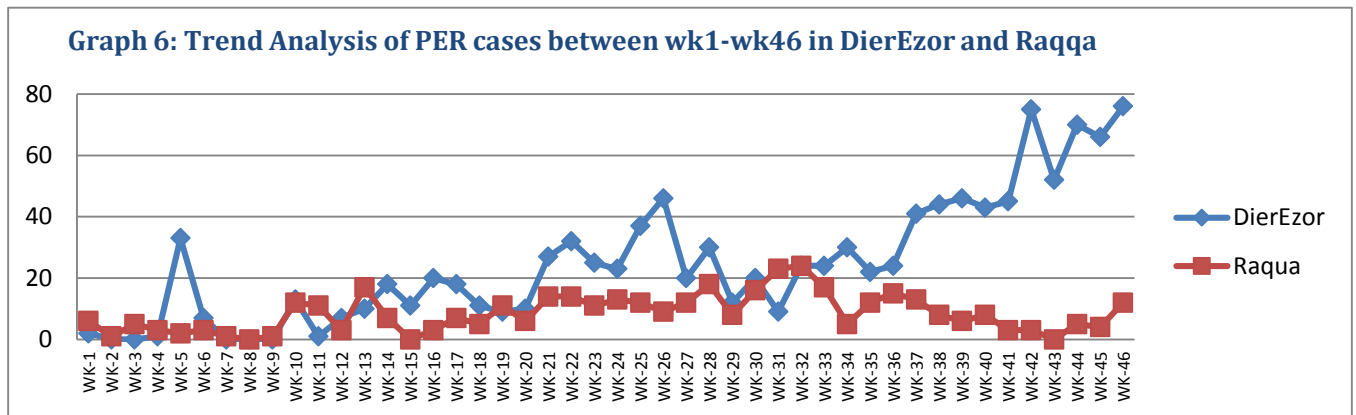
- ❖ Out of the 182,168 total consultations, a total of 22,586 EWARS notifiable cases were reported; of which 12,507 cases were Influenza like Illness (55%), 5,637 cases were Acute Diarrhoea (25%), 1002 cases of AJS, 108 cases of Sever Acute Respiratory Infection, 89 cases of Bloody Diarrhoea, 24 cases of Suspected Meningitis, 20 cases of Suspected Measles, and 2 cases of Acute Flaccid Paralysis.
- ❖ Graphs 2 and 3 below show the proportional morbidity among < 5 and ≥ 5 year age groups respectively.



- ❖ AD constitutes (28, 13 %) among < 5 and (23%) among ≥ 5, while ILI constitutes (56.64%) of the cases among <5 and (55.7%) among ≥ 5. The ascendancy of ILI cases in comparison with AD cases is consistent with the seasonality of both diseases.
- ❖ The cases were distributed equally among males and females. 55% of the cases were distributed among ≥5 age group.
- ❖ In total 3,197 cases were reported as “other diseases”. The most important diseases reported within this group were; 559 cases of Leishmaniasis (most of which were reported from Idleb 53%, Rural Damascus 19% and Hamah 12%), 359 cases of Typhoid (most of which were reported from Idleb 73%, DierEzor 9%, and Rural Damascus 7%), 98 cases of Brucellosis (most of which were reported from Idleb 29%, Rural Damascus 15%, and DierEzor 12%), 94 cases of Pertussis (were reported from DierEzor 81% and Idleb 13%), and 20 cases TB.
- ❖ Graph 4 and 5 below show the trend analysis of Typhoid cases reported from all governorates and the distribution of cases per governorates respectively. It shows that the accumulative number of cases is higher in Idleb, DierEzor, and Rural Damascus (as well the number of the cases reported for this week).



❖ Graph 6 below shows the trend analysis of Pertussis cases reported from DierEzor and Raqqa.



## ❖ The Response

**Acute flaccid paralysis:** Stool sample were collected from AFP cases and sent to the reference lab in Damascus. Sub-National polio vaccination campaign will be implemented in the hard to reach areas between 22 and 26 of November. The annualized rate is 3 up to this week.

**Measles:** Blood samples have been collected from some cases and sent to the reference lab in Damascus. The cases reported from DierEzor are from inaccessible areas, and no sample were collected.

**Pertussis:** efforts for securing the needed quantities of routine vaccines for DierEzor continue by MoH and WHO. Accessibility is still a big challenge preventing routine vaccination in DierEzor.

**Sever Acute Respiratory Infection:** samples were collected from two H1N1 suspected cases (SARI cases admitted to ICU) and sent to the reference lab in Damascus, the results showed negative for H1N1.

Ministry of Health sent official circular to the health directorates in all governorates to undertake the following preparedness procedures:

- Strengthen the surveillance of Sever Acute Respiratory infections, ILI, and MERS – Coron.
- Prepare isolation wards for suspected cases.
- Ensure the availability of needed medicines, P.P.E, and laboratory diagnosis for all suspected cases in ICUs in the governorates.



**Table-1: Distribution of cases per age group, and by Governorate-week-46, 2015:**

Code	age group	Idleb	Hassaka	Raqqa	Sweida	Qunaitra	Lattakia	Aleppo	Hama	Homs	Daraa	Damascus	DierEzor	Rural Damascus	Tartous	Grand Total	
AD	< 5	467	68	252	60	58	228	338	148	94	132	424	266	213	61	2809	5637
	≥ 5	448	17	74	123	89	262	444	102	37	80	557	264	226	105	2828	
BD	< 5	0	3	0	4	3	6	1	0	0	6	4	9	4	0	40	89
	≥ 5	0	6	0	6	11	4	1	0	0	1	6	11	2	1	49	
AWD	< 5	0	0	0	0	0	0	0	0	0	0	0	0	0	0	0	0
	≥ 5	0	0	0	0	0	0	0	0	0	0	0	0	0	0	0	
AJS	< 5	188	4	46	3	3	10	64	12	9	12	23	34	20	1	429	1002
	≥ 5	152	2	17	5	8	44	126	36	7	17	97	11	37	14	573	
ILI	< 5	599	49	16	264	9	1430	1159	188	9	214	389	487	336	508	5657	12507
	≥ 5	478	12	14	505	14	1491	932	266	7	274	708	459	665	1025	6850	
AFP	< 5	0	0	0	0	0	0	0	0	1	0	0	0	0	1	2	2
	≥ 5	0	0	0	0	0	0	0	0	0	0	0	0	0	0	0	
SM	< 5	0	0	1	0	0	1	1	0	0	0	2	4	2	0	11	20
	≥ 5	1	0	0	0	0	1	0	0	0	3	0	3	0	1	9	
SMN	< 5	0	0	5	0	0	0	0	3	0	0	2	0	0	0	10	24
	≥ 5	0	0	2	1	0	1	0	4	0	0	5	0	1	0	14	
SARI	< 5	5	0	0	4	0	0	0	20	0	0	10	0	0	0	39	108
	≥ 5	4	0	0	6	0	6	0	15	0	0	38	0	0	0	69	
Others	< 5	534	0	7	1	54	10	280	60	7	8	31	57	87	3	1139	3197
	≥ 5	487	3	3	13	109	127	412	138	127	75	206	88	258	12	2058	
<b>Total Sum of &lt; 5</b>		1793	124	327	336	127	1685	1843	431	120	372	885	857	662	574	10136	22586
<b>Total Sum of ≥ 5</b>		1570	40	110	659	231	1936	1915	561	178	450	1617	836	1189	1158	12450	
<b>Total</b>		<b>3363</b>	<b>164</b>	<b>437</b>	<b>995</b>	<b>358</b>	<b>3621</b>	<b>3758</b>	<b>992</b>	<b>298</b>	<b>822</b>	<b>2502</b>	<b>1693</b>	<b>1851</b>	<b>1732</b>	<b>22586</b>	

