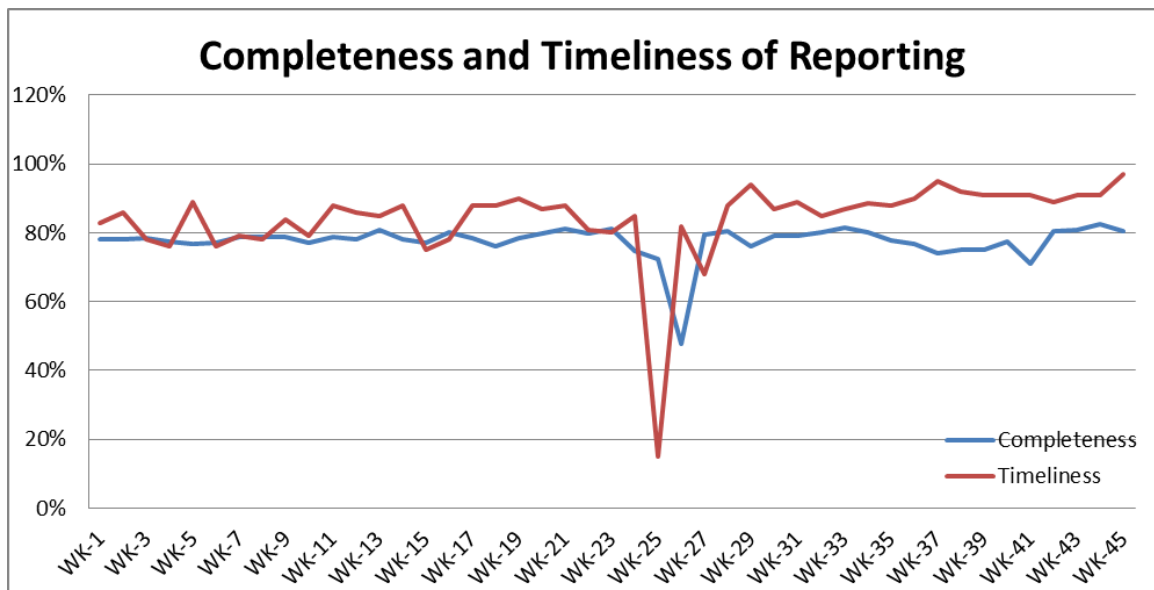


❖ Highlights:

- ❖ During this week 4 AFP case was reported; 3 cases from Damascus and one case from Hama.
- ❖ (20) Suspected Measles cases were reported during this week; mostly from Damascus 8 cases, Ar-Raqqa 6 cases, Aleppo 3 cases.

❖ Completeness & Timeliness of Reporting

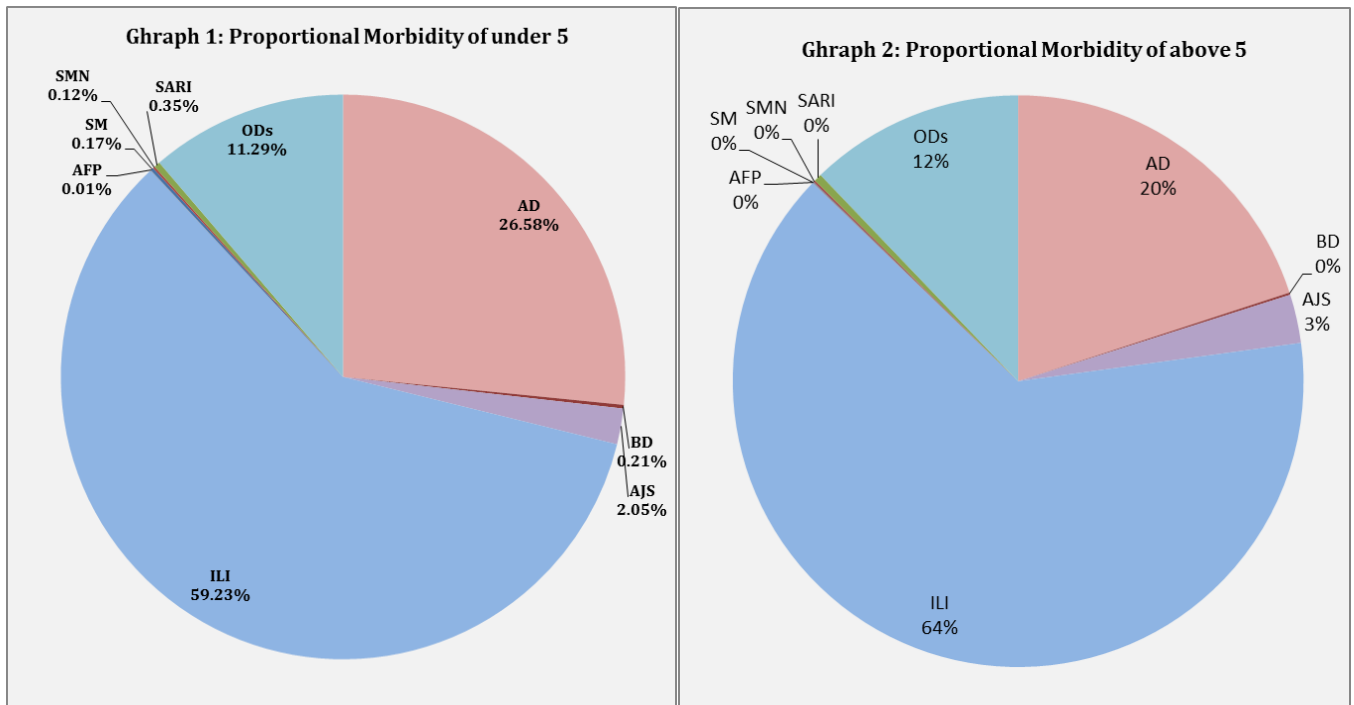
- ❖ The overall completeness of reporting was 80%; (924 out of total 1148 EWARS sentinel sites). (14) Governorates have reported this week. Timeliness of reporting was 97%.



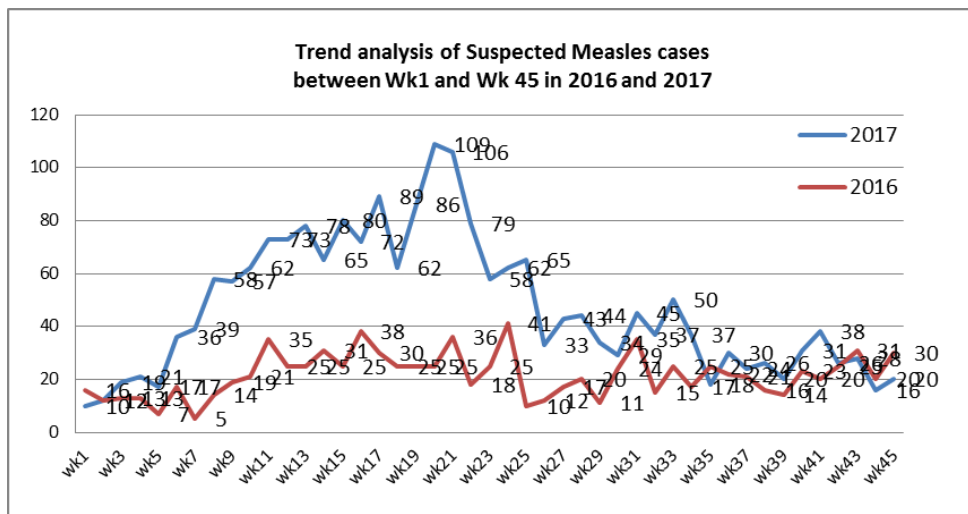
❖ The Morbidity Cases

- ❖ Out of the 218,301 total consultations, a total of 20,548 EWARS notifiable cases were reported; of which 4,674 cases were Acute Diarrhoea (23%), 12,783 cases were Influenza like Illness (62%), 504 cases of AJS, 83 cases of Sever Acute Respiratory Infection, 33 cases of Bloody Diarrhoea, 16 cases of Suspected Measles, 20 cases of Suspected Meningitis, and 4 cases of Acute Flaccid Paralysis.

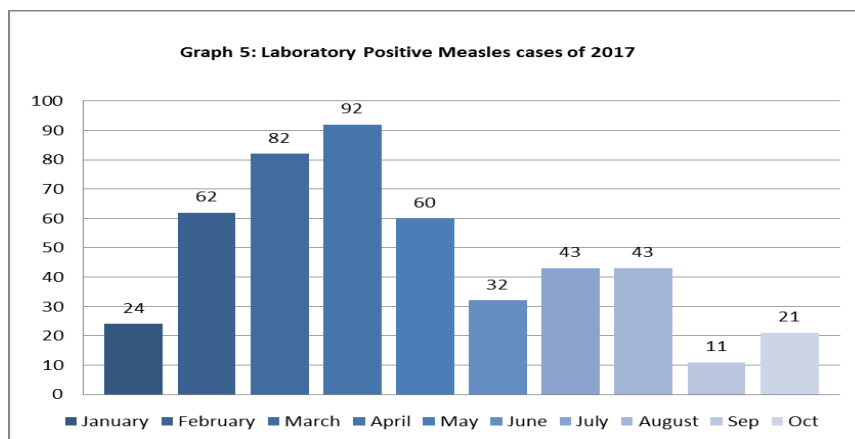
❖ Graphs 1 and 2 below show the proportional morbidity among < 5 and ≥ 5 year age groups respectively.



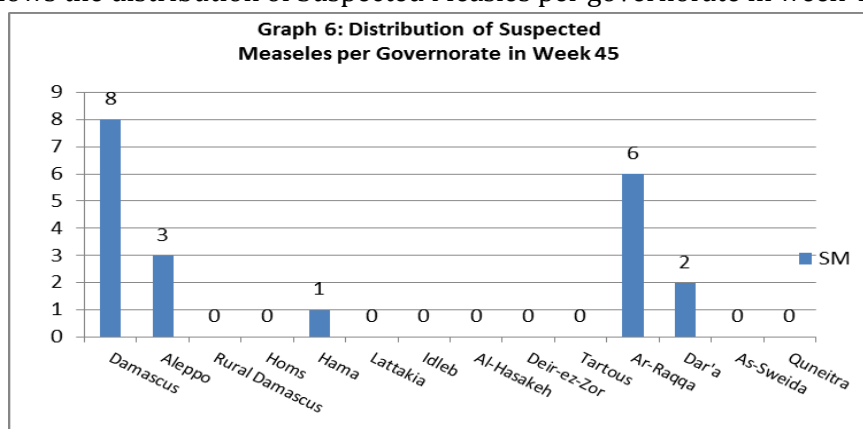
- ❖ AD constitutes (26.58%) among < 5 and (20%) among ≥ 5, while ILI constitutes (59.23%) of the cases among <5 and (64%) among ≥ 5.
- ❖ 52% of the cases were distributed among males. 58% of the cases were distributed among ≥5 age group.
- ❖ In total 2,538 cases were reported as “other diseases”. The most important diseases reported within this group were; 453 cases of Leishmaniasis, 130 cases of Typhoid, 93 cases of Brucellosis, 43 cases of Pertussis, 17 cases of Mumps, and 8 cases of TB.
- ❖ **Graph 4** shows the trend analysis of suspected Measles cases reported between week 1 and week 45 of 2016 and 2017.



❖ **Graph 5** shows the number of laboratory confirmed Measles cases reported till Oct 2017. It shows that the peak of measles cases was in April.



❖ **Graph 6:** Shows the distribution of Suspected Measles per governorate in week 45.



❖ **Graph 7:** Shows the distribution of accumulative AFP cases between week 16 and week 45 of 2017. It shows that most AFP cases were reported from Deir-ez-Zor.

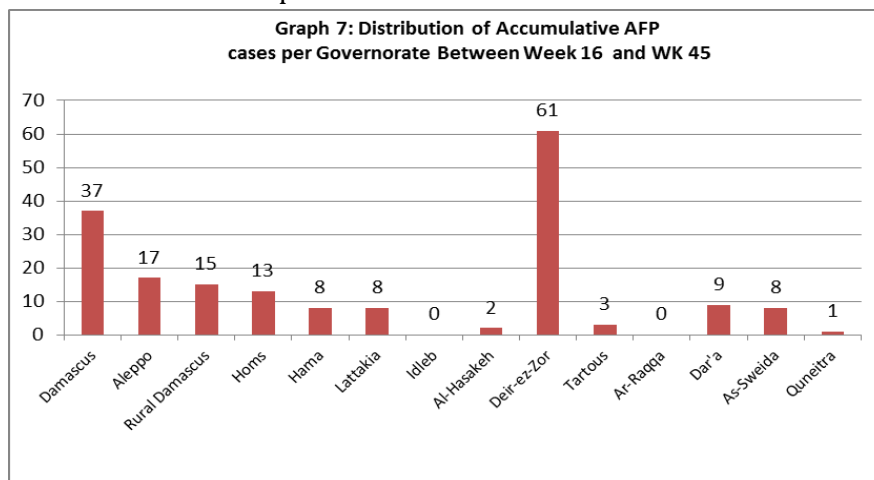


Table 1 shows a comparison between all notifiable cases in week 44 & week 45 in 2017.

Disease	Week 44	Week 45
AD	4,998	4,674
BD	45	33
AWD	0	0
AJS	491	504
ILI	12,704	12,783
AFP	2	4
SM	16	20
SMN	19	22
SARI	104	83
TYF	130	94
PER	43	20
LSH	453	481
BRU	93	105
TB	8	13
SCA	219	232
LIC	558	565
CHP	881	819
Others	136	83
Mum	17	13

❖ Disease surveillance & Response

cVDPV2 outbreak response:

Two immunization rounds have now been completed in Deir-ez-Zor and Ar-Raqqa with more than 350,000 resident, refugee and internally displaced children have been reached with mOPV2 since the start of the outbreak. MoH by collaboration with WHO has strengthened surveillance for other governorates. WHO is supporting the establishment of environmental surveillance in country by end of 2017.

Polio Campaign:

More than 2.1 million children under five years old were vaccinated with bOPV in the National Immunization Days that took place between 8-12 October 2017. Sub national polio campaign was conducted from 19 to 23 November 2017. The campaign targeted HTRs and besieged areas in all governorates except Idleb.

Table-2: Distribution of cases per age group, and by Governorate-week- 45, 2017:

Code	Age Group	Idleb	Hassaka	Raqqqa	Sweida	Qunaitra	Lattakia	Aleppo	Hama	Homs	Daraa	Damascus	DierEzor	Rural Damascus	Tartous	Grand Total	
AD	< 5	206	32	298	64	34	166	370	178	88	84	394	74	234	65	2287	4,674
	≥ 5	147	10	93	84	72	333	377	125	86	111	478	95	232	144	2387	
BD	< 5	0	1	5	3	0	2	1	1	0	2	0	3	0	0	18	33
	≥ 5	0	1	1	3	0	2	2	0	0	1	4	0	0	1	15	
AWD	< 5	0	0	0	0	0	0	0	0	0	0	0	0	0	0	0	0
	≥ 5	0	0	0	0	0	0	0	0	0	0	0	0	0	0	0	
AJS	< 5	13	0	83	0	0	2	29	10	3	3	13	9	11	0	176	504
	≥ 5	9	0	46	6	0	20	127	30	14	9	33	13	18	3	328	
ILI	< 5	6	74	1	150	332	1280	744	250	208	214	445	343	686	363	5096	12,783
	≥ 5	3	58	0	269	927	1518	848	174	277	497	744	342	1059	971	7687	
AFP	< 5	0	0	0	0	0	0	0	1	0	0	0	0	0	0	1	4
	≥ 5	0	0	0	0	0	0	0	0	0	0	3	0	0	0	3	
SM	< 5	0	0	6	0	0	0	2	0	0	1	6	0	0	0	15	20
	≥ 5	0	0	0	0	0	0	1	1	0	1	2	0	0	0	5	
SMN	< 5	0	0	4	2	0	0	1	3	0	0	0	0	0	0	10	22
	≥ 5	0	0	5	0	0	0	0	3	0	2	2	0	0	0	12	
SARI	< 5	0	0	11	2	0	0	3	8	0	0	6	0	0	0	30	83
	≥ 5	0	0	9	9	0	12	2	12	0	0	9	0	0	0	53	
Other	< 5	561	0	54	14	0	21	119	23	91	10	11	25	27	15	971	2,425
	≥ 5	334	6	34	20	7	73	299	185	177	30	62	77	114	36	1454	
Total Sum of < 5		786	107	462	235	366	1471	1269	474	390	314	875	454	958	443	8604	20,548
Total Sum of ≥ 5		493	75	188	391	1006	1958	1656	530	554	651	1337	527	1423	1155	11944	