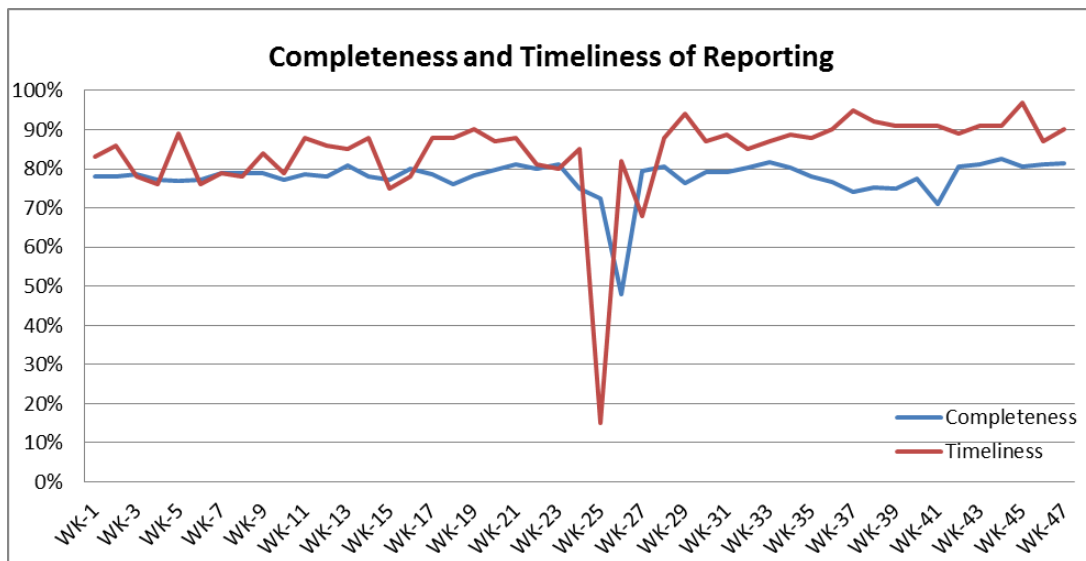


#### ❖ Highlights:

- ❖ During this week only one AFP case from Hama was reported.
- ❖ (18) Suspected Measles cases were reported during this week; mostly from Damascus 4 cases, from Rural Damascus 3 cases, and from Ar-Raqqa 3 cases.

#### ❖ Completeness& Timeliness of Reporting

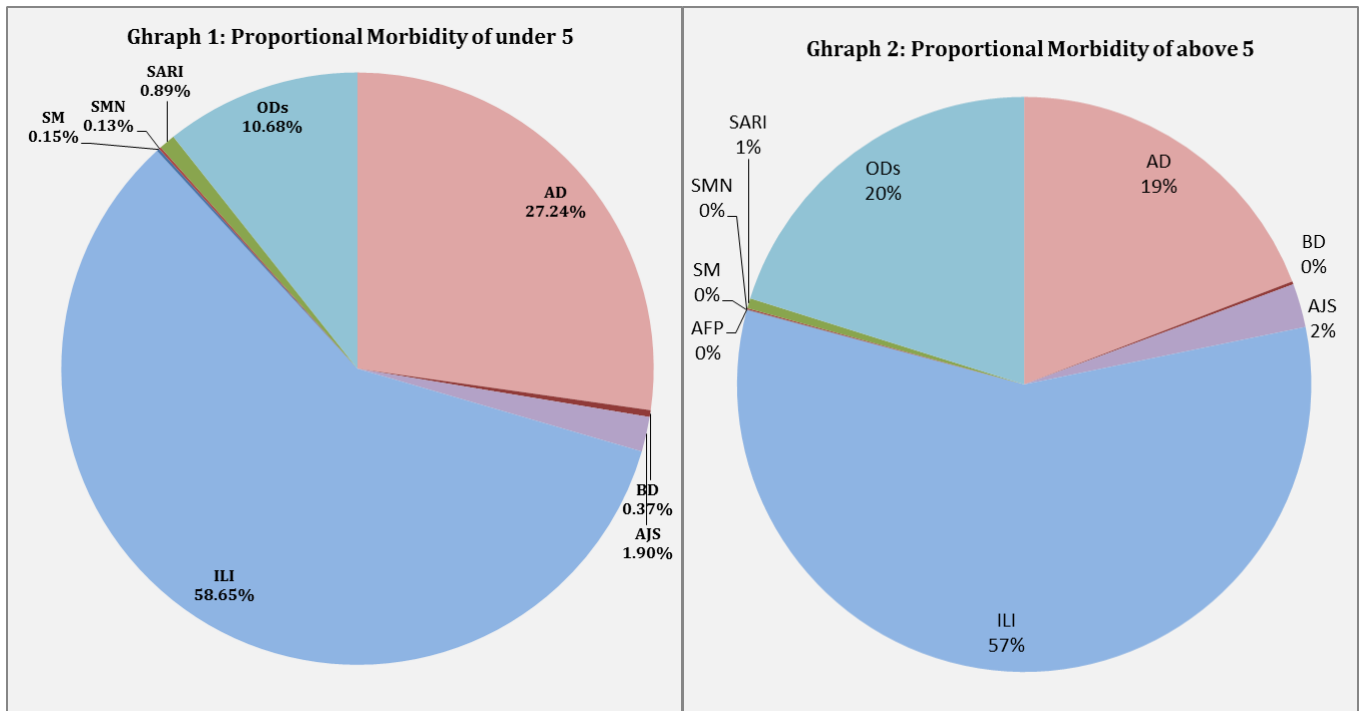
- ❖ The overall completeness of reporting was 82%; (936 out of total 1148 EWARS sentinel sites). (14) Governorates have reported this week. Timeliness of reporting was 90%.



#### ❖ The Morbidity Cases

- ❖ Out of the 422,165 total consultations, a total of 22, 644 EWARS notifiable cases were reported; of which 5,105 cases were Acute Diarrhoea (23%), 13,111 cases were Influenza like Illness (58%), 504 cases of AJS, 158 cases of Sever Acute Respiratory Infection, 57 cases of Bloody Diarrhoea, 18 cases of Suspected Measles, 22 cases of Suspected Meningitis, and 1 cases of Acute Flaccid Paralysis.

❖ Graphs 1 and 2 below show the proportional morbidity among < 5 and ≥ 5 year age groups respectively.

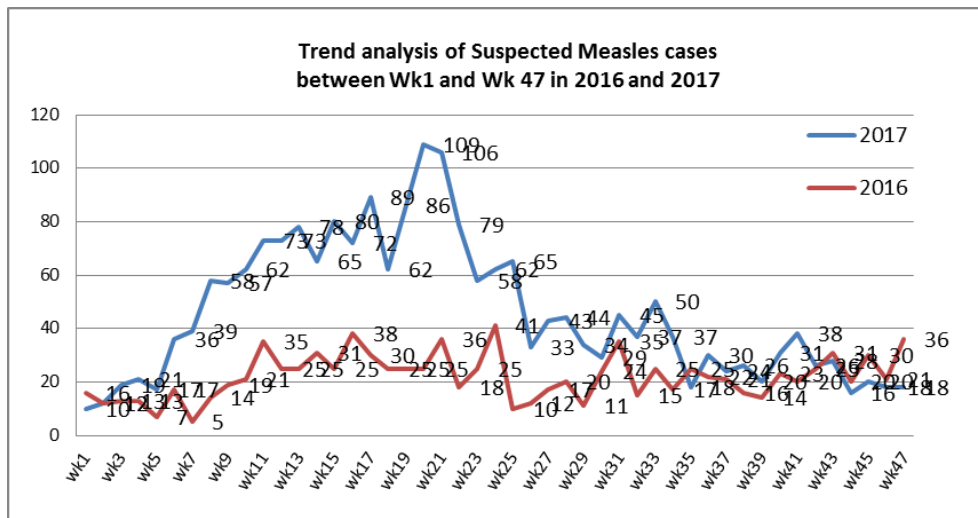


❖ AD constitutes (27.24%) among < 5 and (19%) among ≥ 5, while ILI constitutes (58.65%) of the cases among <5 and (57%) among ≥ 5.

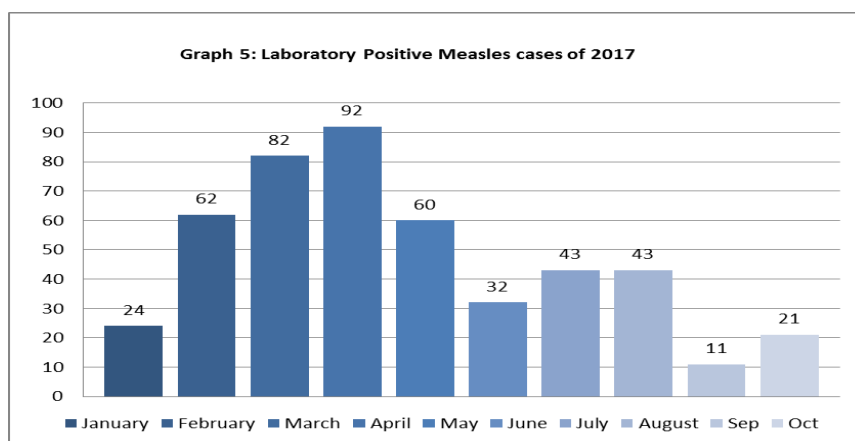
❖ 49% of the cases were distributed among males. 58% of the cases were distributed among ≥5 age group.

❖ In total 3,668 cases were reported as “other diseases”. The most important diseases reported within this group were; 675 cases of Leishmaniasis, 115 cases of Typhoid, 102 cases of Brucellosis, 24 cases of Pertussis, 13 cases of Mumps, 1792 cases of lice, and 19 cases of TB.

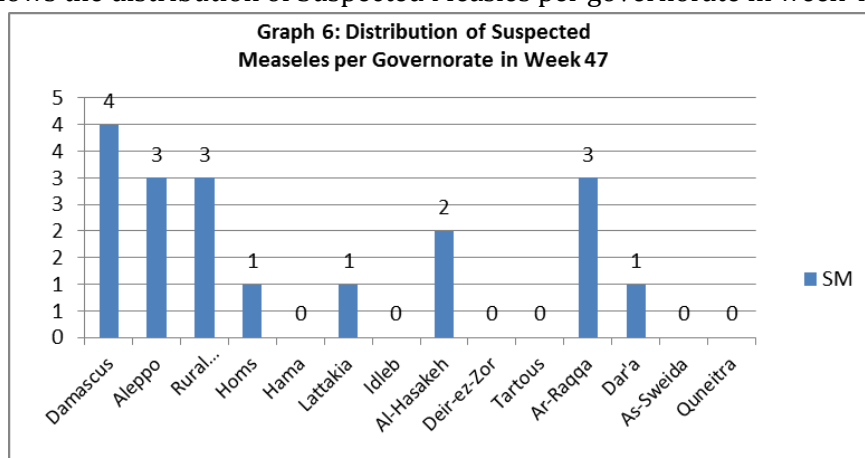
❖ **Graph 4** shows the trend analysis of suspected Measles cases reported between week 1 and week 47 of 2016 and 2017.



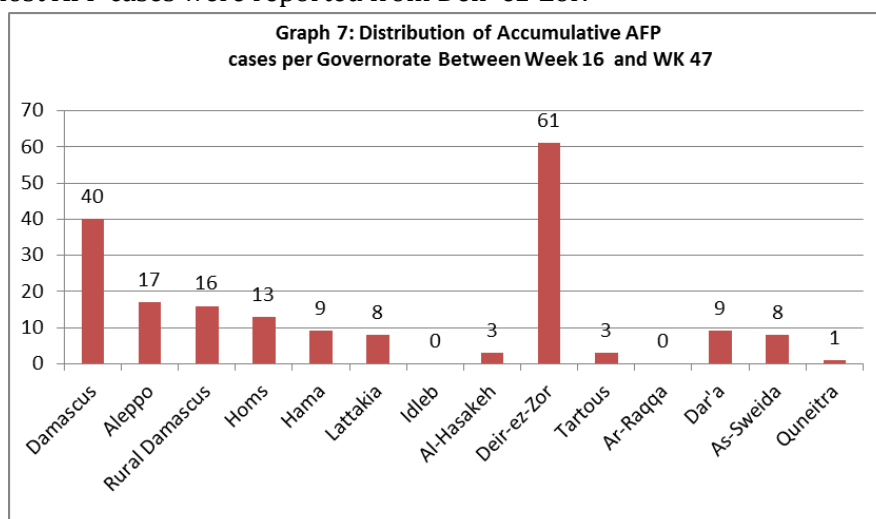
❖ **Graph 5** shows the number of laboratory confirmed Measles cases reported till Oct 2017. It shows that the peak of measles cases was in April.



❖ **Graph 6:** Shows the distribution of Suspected Measles per governorate in week 47.



❖ **Graph 7:** Shows the distribution of accumulative AFP cases between week 16 and week 47 of 2017. It shows that most AFP cases were reported from Deir-ez-Zor.



**Table 1** shows a comparison between all notifiable cases in week 46 & week 47 in 2017.

**Table 1: Comparison between reported cases for week 46 and week 47 in 2017.**

Disease	Week 46	Week 47
AD	4,771	5,105
BD	32	57
AWD	0	0
AJS	486	504
ILI	12,982	13,111
AFP	5	1
SM	18	18
SMN	20	22
SARI	173	158
TYF	116	115
PER	27	24
LSH	571	675
BRU	95	102
TB	11	19
SCA	349	286
LIC	553	483
CHP	1604	1792
Others	114	149
Mum	12	23

## ❖ Disease surveillance & Response

### **cVDPV2 outbreak response:**

MoH by collaboration with WHO has strengthened surveillance for other governorates. WHO is supporting the establishment of environmental surveillance in country.

### **Polio Campaign:**

More than 2.1 million children under five years old were vaccinated with bOPV in the National Immunization Days that took place between 8-12 October 2017. Sub national polio campaign is being conducted from 19 to 23 November 2017. The campaign targets HTRs and besieged areas in all governorates except Idleb.

**Table-2: Distribution of cases per age group, and by Governorate-week- 47, 2017:**

Code	Age Group	Idleb	Hassaka	Raqqqa	Sweida	Qunaitra	Lattakia	Aleppo	Hama	Homs	Daraa	Damascus	DierEzor	Rural Damascus	Tartous	Grand Total
AD	< 5	196	183	304	73	52	245	314	234	109	110	371	84	208	96	2579
	≥ 5	169	71	107	77	74	277	395	204	97	112	446	87	237	173	2526
BD	< 5	0	0	19	4	0	3	0	0	0	6	0	3	0	0	35
	≥ 5	0	2	12	2	0	1	1	0	0	2	2	0	0	0	22
AWD	< 5	0	0	0	0	0	0	0	0	0	0	0	0	0	0	0
	≥ 5	0	0	0	0	0	0	0	0	0	0	0	0	0	0	0
AJS	< 5	10	3	45	1	0	4	57	6	6	9	7	29	3	0	180
	≥ 5	8	2	20	3	1	13	120	42	19	15	26	32	18	5	324
ILI	< 5	13	206	25	262	309	1219	914	218	241	224	487	352	699	383	5552
	≥ 5	29	207	15	291	656	1504	910	157	225	341	781	351	1206	886	7559
AFP	< 5	0	0	0	0	0	0	0	0	0	0	0	0	0	0	0
	≥ 5	0	0	0	0	0	0	0	1	0	0	0	0	0	0	1
SM	< 5	0	1	3	0	0	1	2	0	1	0	4	0	2	0	14
	≥ 5	0	1	0	0	0	0	1	0	0	1	0	0	1	0	4
SMN	< 5	0	0	7	1	0	3	1	0	0	0	0	0	0	0	12
	≥ 5	0	0	3	0	0	1	0	3	0	0	2	0	0	1	10
SARI	< 5	0	22	13	3	0	5	0	24	1	0	16	0	0	0	84
	≥ 5	0	10	11	9	0	16	2	17	0	0	9	0	0	0	74
Other	< 5	519	48	54	8	29	9	128	41	52	17	24	32	30	20	1011
	≥ 5	420	79	48	22	49	214	283	190	112	37	62	86	968	87	2657
<b>Total Sum of &lt; 5</b>		738	463	470	352	390	1489	1416	523	410	366	909	500	942	499	9467
<b>Total Sum of ≥ 5</b>		626	372	216	404	780	2026	1712	614	453	508	1328	556	2430	1152	13177