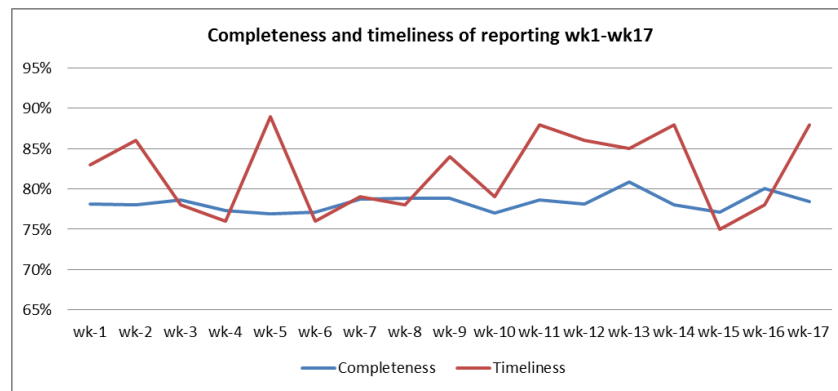


Highlights:

- ❖ (3) AFP cases were detected in Deir-ez-Zor, Lab samples are kept in cool condition and it is expected to reach the reference lab in Damascus within few days.
- ❖ (89) Suspected Measles cases were reported during this week: from Damascus (21), Rural Damascus (15), Aleppo (12), and Ar-Raqqa (11).

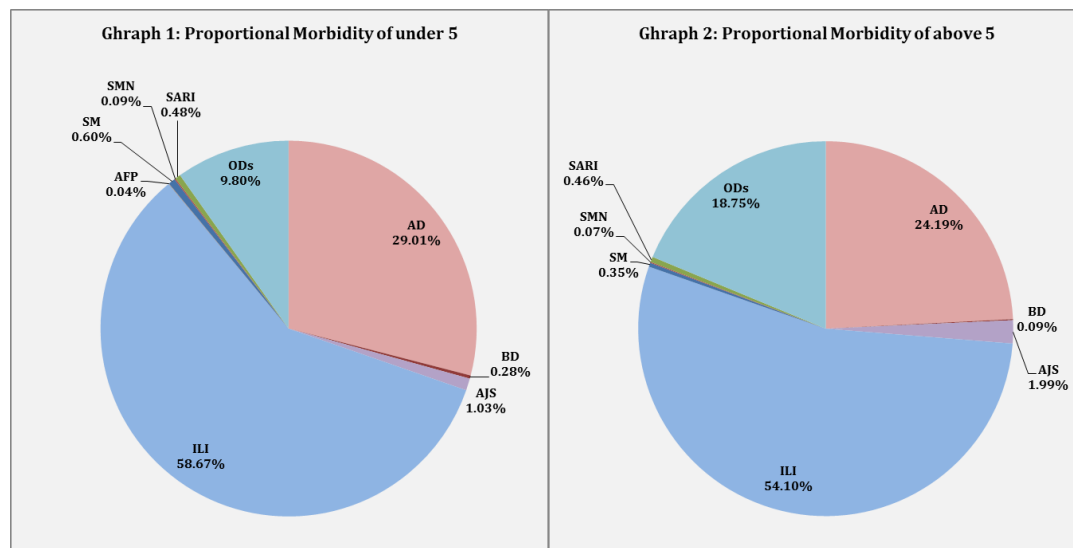
Completeness& Timeliness of Reporting

- ❖ The overall completeness of reporting was 78%, (879 out of total 1120 EWARS sentinel sites), (14) Governorates have reported this week; Timeliness of reporting was 88%.



The Morbidity Cases

- ❖ Out of the 271,763 total consultations, a total of 19,410 EWARS notifiable cases were reported; of which 10,881 cases were Influenza like Illness (56%), 5,101 cases were Acute Diarrhoea (26%), 304 cases of AJS, 97 cases of Sever Acute Respiratory Infection, 89 cases of Suspected Measles, 34 cases of Bloody Diarrhoea, 16 cases of Suspected Meningitis, and 3 cases of Acute Flaccid Paralysis.
- ❖ Graphs 1 and 2 below show the proportional morbidity among < 5 and ≥ 5 year age groups respectively.

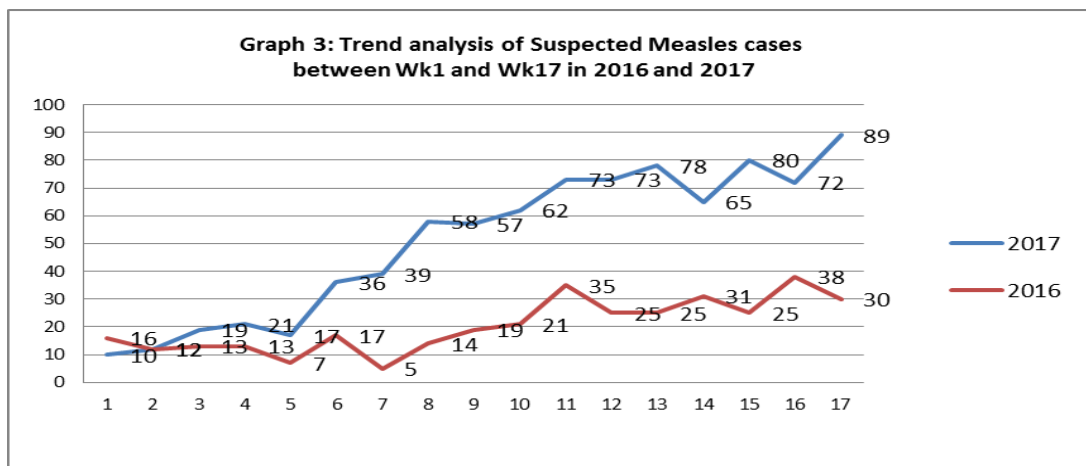


- ❖ AD constitutes (29.01%) among < 5 and (24.19%) among ≥ 5, while ILI constitutes (58.67%) of the cases among <5 and (54.10%) among ≥ 5.

- ❖ 51.9% of the cases were distributed among males, 56% of the cases were distributed among ≥5 age group.

In total 2,877 cases were reported as “other diseases”. The most important diseases reported within this group were; 374 cases of Leishmaniasis (most of which were reported from Hama 27%, Idleb 50%, Aleppo 6%, Lattakia 8%), 217 cases of Typhoid (most of which were reported from DierEzor 51% ,Idlib 18% ,Hama 7%, and Rural Damascus 13%), 139 cases of Brucellosis, 48 cases of Mumps, 30 cases of Pertussis, and 9 cases of TB.

Graph 3 shows the trend analysis of suspected Measles cases reported between week 1 and week 17 of 2016 and 2017. It shows an increase in reported SM cases for this week.



Graph 4 shows the distribution of Suspected Measles cases per governorates reported during week 17 of 2017.

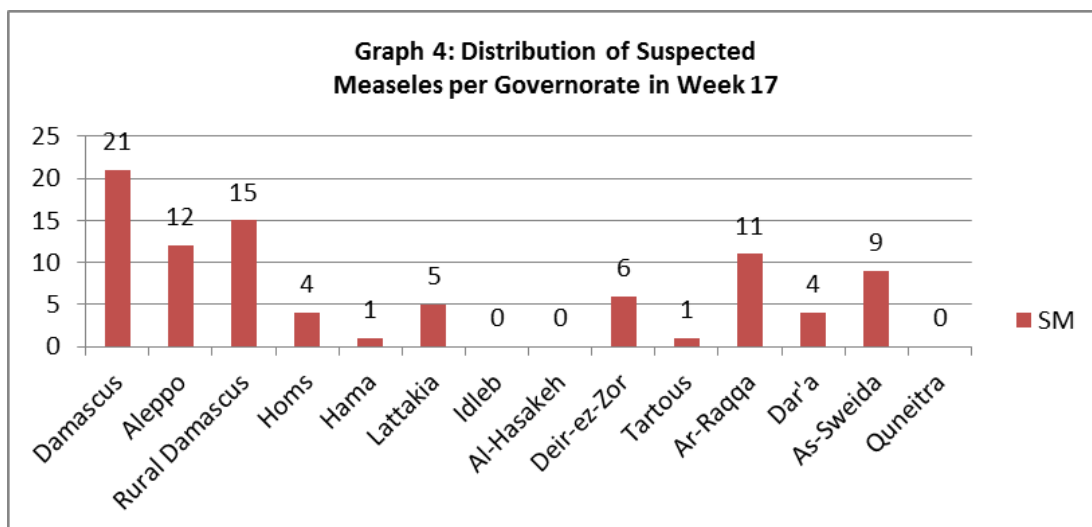


Table 1 shows a comparison between reported cases in week 16 & week 17 in 2017.

	Table 1:		
	Disease	Week 16	Week 17
An increase in brucellosis cases is mainly reported from Rural Damascus, Hama, and Deir-ez-Zor.	AD	4,824	5,101
	BD	41	34
	AWD	0	0
	AJS	343	304
	ILI	10,217	10,881
	AFP	2	3
	SM	72	89
	SMN	13	16
	SARI	97	105
	TYF	156	217
	PER	28	30
	LSH	479	374
	BRU	89	139
	TB	8	9
	SCA	547	593
	LIC	961	841
	CHP	435	362

❖ The Response

Acute flaccid paralysis: The stool samples collected from the AFP case reported are kept in cool condition, and it is expected to reach the reference lab in Damascus within few days. The annualized AFP rate up to week 17 is 3.3 .

Suspected Measles cases: Measles cases continue to be reported and investigated from all governorates, a national vaccination campaign will be implemented 21-25 May targeting children under 5 years old.

Table-2: Distribution of cases per age group, and by Governorate-week- 17, 2017:

Code	age group	Idleb	Hassaka	Raqqa	Sweida	Qunaitra	Lattakia	Aleppo	Hama	Homs	Daraa	Damascus	DierEzor	Rural Damascus	Tartous	Grand Total
AD	< 5	181	17	57	109	34	213	388	144	105	173	510	313	183	34	2461
	≥ 5	159	4	34	82	42	298	473	103	81	154	608	285	250	67	2640
BD	< 5	0	0	0	9	0	2	1	0	1	1	2	7	1	0	24
	≥ 5	0	0	0	6	0	0	0	0	0	0	4	0	0	0	10
AWD	< 5	0	0	0	0	0	0	0	0	0	0	0	0	0	0	0
	≥ 5	0	0	0	0	0	0	0	0	0	0	0	0	0	0	0
AJS	< 5	7	0	8	0	0	2	19	3	1	2	16	18	8	3	87
	≥ 5	12	0	1	2	1	5	73	15	3	4	71	14	12	4	217
ILI	< 5	81	32	7	218	112	1218	848	95	157	296	521	466	548	377	4976
	≥ 5	69	22	4	344	214	1278	710	92	241	387	779	428	784	553	5905
AFP	< 5	0	0	0	0	0	0	0	0	0	0	0	3	0	0	0
	≥ 5	0	0	0	0	0	0	0	0	0	0	0	0	0	0	0
SM	< 5	0	0	8	4	0	2	9	1	1	4	8	5	9	0	51
	≥ 5	0	0	3	5	0	3	3	0	3	0	13	1	6	1	38
SMN	< 5	0	0	1	0	0	4	0	2	0	0	1	0	0	0	8
	≥ 5	0	0	1	1	0	0	1	1	0	0	3	0	1	0	8
SARI	< 5	0	0	7	5	0	7	0	6	1	0	17	1	2	0	46
	≥ 5	0	0	1	33	0	12	0	8	0	0	3	1	1	0	59
Other	< 5	208	0	8	16	33	45	134	39	83	40	36	127	62	0	831
	≥ 5	284	3	17	23	51	441	345	199	135	47	61	283	155	2	2046
Total Sum of < 5		689	0	32	29	83	78	262	77	157	86	59	236	115	5	1908
Total Sum of ≥ 5		628	6	44	195	110	624	614	444	245	86	127	488	270	9	3890
Total		1317	6	76	224	193	702	876	521	402	172	186	724	385	14	19410