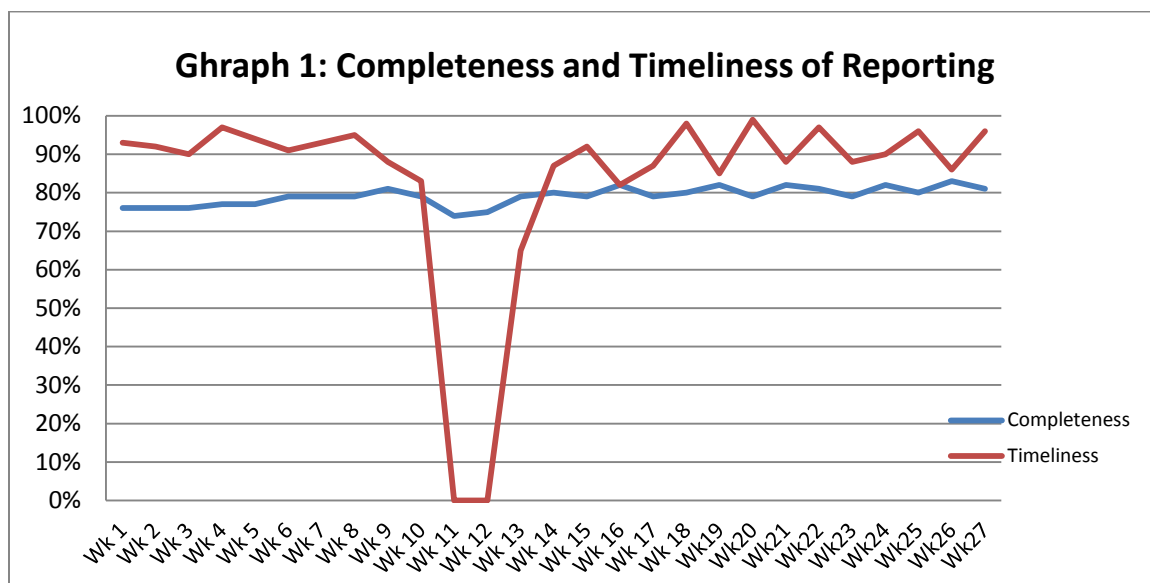


### Highlights:

- ❖ Following the confirmation of (4) TB cases in Roj camp in Alhassakeh governorate, a notification on other suspected TB was received during this week.

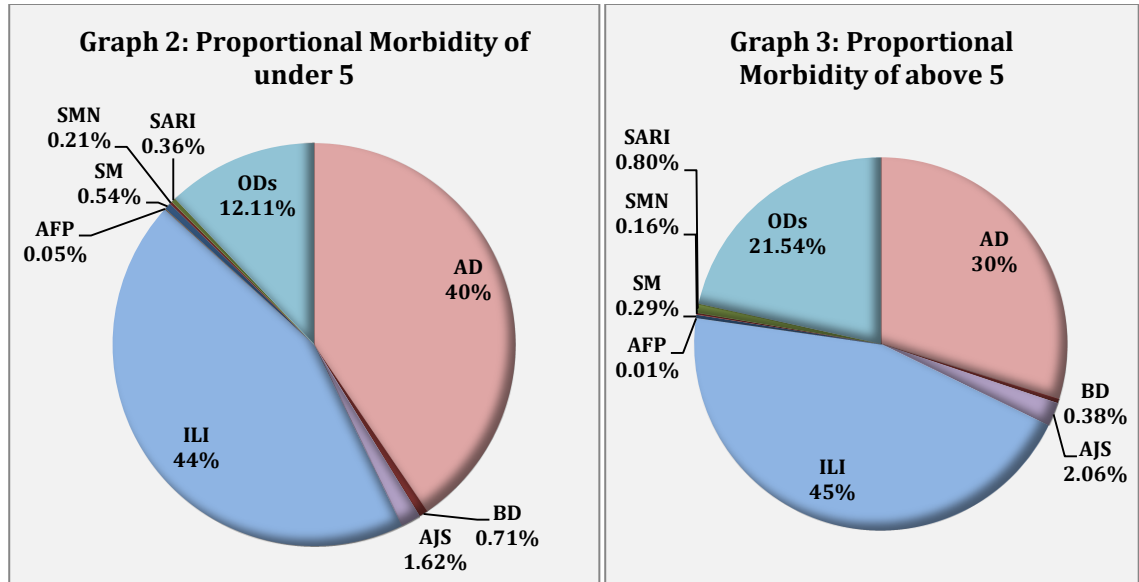
### ❖ Completeness & Timeliness of Reporting

- ❖ The overall completeness of reporting was 81%; (1026 out of total 1267 EWARS sentinel sites). 14 governorates have reported this week.
- ❖ Timeliness of reporting was 96%.

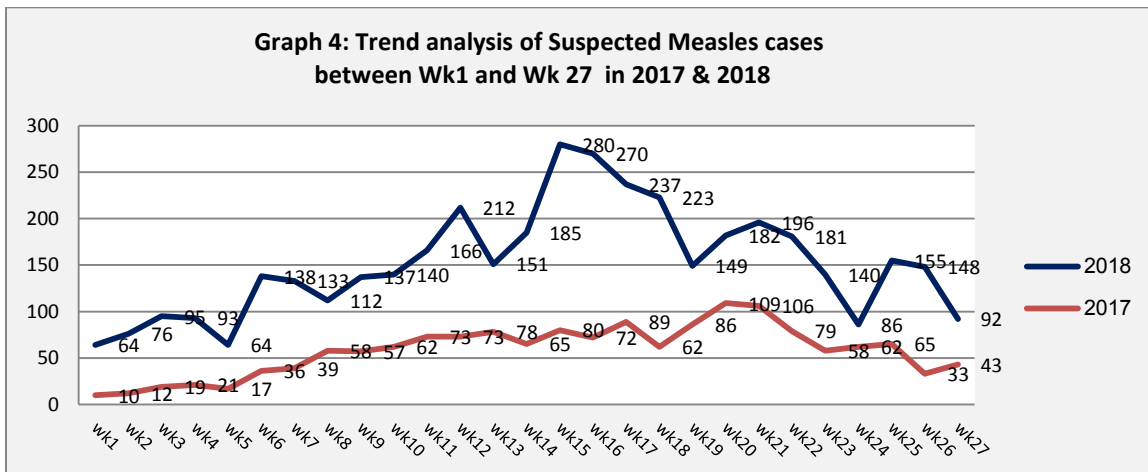


### ❖ The Morbidity Cases

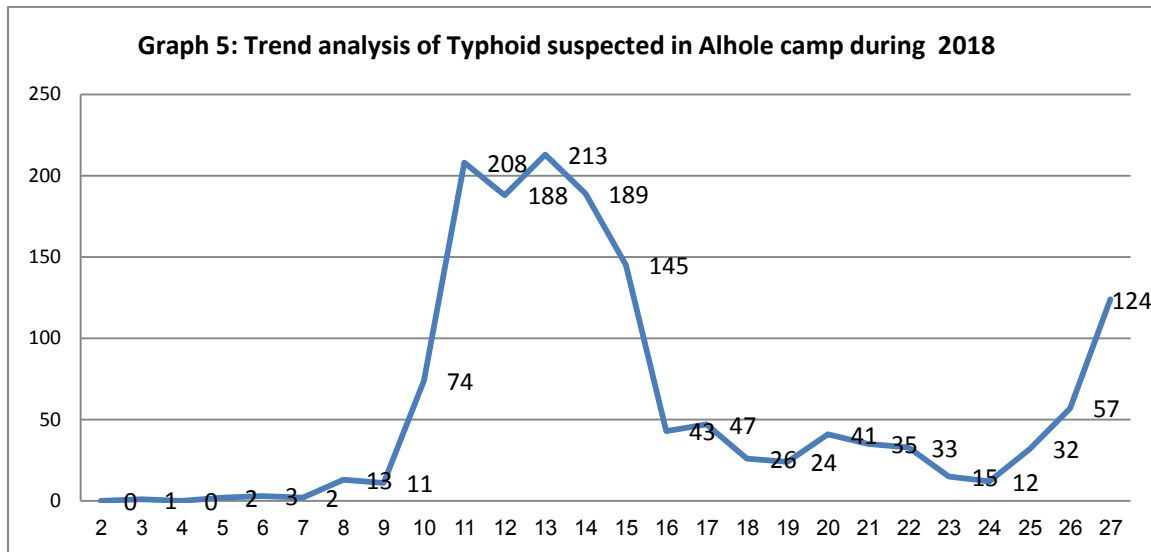
- ❖ Out of the 252,633 total consultations, a total of 23,288 EWARS notifiable cases were reported; of which 10,374 cases were Influenza like Illness (45%), 7,974 cases were Acute Diarrhoea (34%), 436 cases of AJS, 144 cases of Sever Acute Respiratory Infection, 120 cases of Bloody Diarrhoea, 92 cases of Suspected Measles, and 42 cases of Suspected Meningitis.
- ❖ **Graphs 2 and 3 below** show the proportional morbidity among < 5 and ≥ 5 year age groups respectively.



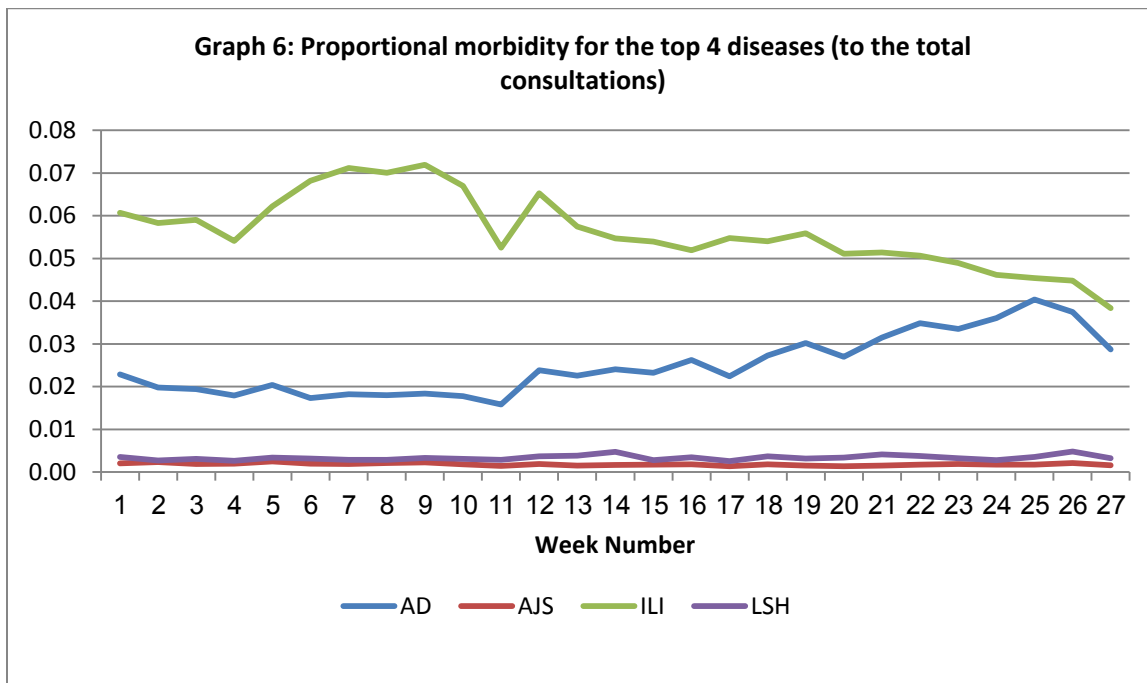
- ❖ 50% of the cases were distributed among males. 58% of the cases were distributed among  $\geq 5$  age group.
- ❖ AD constitutes (40%) among  $< 5$  and (30%) among  $\geq 5$ , while ILI constitutes (44%) of the cases among  $< 5$  and (45%) among  $\geq 5$
- ❖ In total 4,492 cases were reported as “other diseases”. The most important diseases reported within this group were; 1088 cases of Leishmaniasis (mostly from Aleppo, Idlib and Deit Ezzor), 260 cases of Brucellosis, 310 cases of Typhoid, 172 cases of TB, Pertussis 43, and Mumps 23
- ❖ **Graph 4:** shows the trend analysis of suspected Measles cases reported between week 1 and week 27 of 2017 and 2018. It shows a slight decrease in suspected cases in week 27.



**Graph 5:** Trend analysis of suspected Typhoid cases in Alhole camp. The graph indicates that cases have started to re-increase.



**Graph 6** shows the trend analysis of top four diseases to total consultations. It shows an increase in the trend of Acute Diarrhea cases in this week, this increase is synchronized with summer season.



- ❖ The table below shows comparison between reported cases in week-26 and week-27 2018.

Table 1: Comparison between reported cases for week 26 & week 27 in 2018.

Disease	1st Week	2nd Week
	26	27
AD	9096	7974
BD	112	120
AWD	0	0
AJS	530	436
ILI	10717	10374
AFP	2	6
SM	148	92
SMN	47	42
SARI	181	144
TYF	235	310
PER	57	43
LSH	1088	817
BRU	212	260
TB	12	172
SCA	503	434
LIC	696	567
CHP	483	494
MUM	32	23
Others	1182	980
Total	25333	23288

## ❖ The Response

### **Tb Cases in Roj Camp:**

As of 4 July 2018, 4 confirmed TB cases were identified in Roj camp including 2 deaths. On 2nd July, contact tracing activity was started to screen all TB patients' contacts in addition to suspected TB cases, Alhassakeh DoH through WHO has supported a mobile team to investigate the cases and conduct smear tests. Suspected cases and patients were referred to Malkeih hospital to get chest X-rays. Until now, 157 individuals were screened. Physical examination was conducted to all suspected cases by a thoracic specialist; the results of lab tests were negative for TB for all screened cases.

### **Typhoid cases in Alhole camp:**

Up to week 27 a total number of 1538 suspected cases of typhoid fever in Al Hol camp, Al-Hasakeh governorate were reported to EWARS. WHO and partners distributed soap and water purification sachets to households and explained to them how they could take simple measures to reduce the risk of the disease. WHO provided antibiotics to treat typhoid patients, and investigated water sources.

**Table-2: Distribution of cases per age group, and by Governorate-week-27, 2018:**

Code	age group	Idleb	Hassaka	Raqqa	Sweida	Qunaitra	Lattakia	Aleppo	Hama	Homs	Daraa	Damascus	DierEzor	Rural Damascus	Tartous	Grand Total
AD	< 5	194	231	229	133	49	345	726	287	142	97	422	913	566	98	4,432
	≥ 5	139	195	129	152	74	486	541	156	125	112	559	855	720	220	4,463
BD	< 5	0	26	20	1	0	3	1	0	0	1	0	12	0	0	64
	≥ 5	0	32	10	0	0	0	0	0	0	0	5	0	0	0	47
AWD	< 5	0	0	0	0	0	0	0	0	0	0	0	0	0	0	0
	≥ 5	0	0	0	0	0	0	0	0	0	0	0	1	0	0	1
AJS	< 5	0	15	58	2	0	2	25	11	3	0	9	85	12	2	224
	≥ 5	0	31	37	0	2	17	64	43	14	4	25	34	19	14	304
ILI	< 5	25	124	26	121	208	1,038	684	98	82	106	216	608	979	168	4,483
	≥ 5	17	144	14	160	348	1,007	820	63	137	220	528	603	1,507	529	6,097
AFP	< 5	0	0	0	0	0	0	0	0	0	0	0	0	0	0	0
	≥ 5	0	0	0	0	0	0	1	0	0	1	0	0	0	0	2
SM	< 5	0	22	39	0	0	4	1	2	1	0	0	28	1	0	98
	≥ 5	0	25	11	0	0	1	0	1	0	0	0	12	0	0	50
SMN	< 5	0	1	7	1	0	2	2	8	0	1	4	0	0	2	28
	≥ 5	0	0	4	1	0	0	0	9	0	0	2	0	1	2	19
SARI	< 5	0	6	13	3	0	0	3	21	0	0	11	0	0	2	59
	≥ 5	0	5	16	9	0	7	4	21	1	0	56	0	0	3	122
Others	< 5	474	87	41	11	6	13	366	45	11	17	9	144	137	1	1,362
	≥ 5	347	167	63	13	20	68	587	248	53	23	52	595	887	7	3,130
<b>Total Sum of &lt; 5</b>		693	512	433	272	263	1,407	1,808	472	239	222	671	1,790	1,695	273	10,750
<b>Total Sum of ≥ 5</b>		503	599	284	335	444	1,586	2,017	541	330	360	1,227	2,100	3,134	775	14,235
<b>Total</b>		<b>1,196</b>	<b>1,111</b>	<b>717</b>	<b>607</b>	<b>707</b>	<b>2,993</b>	<b>3,825</b>	<b>1,013</b>	<b>569</b>	<b>582</b>	<b>1,898</b>	<b>3,890</b>	<b>4,829</b>	<b>1,048</b>	<b>24,985</b>