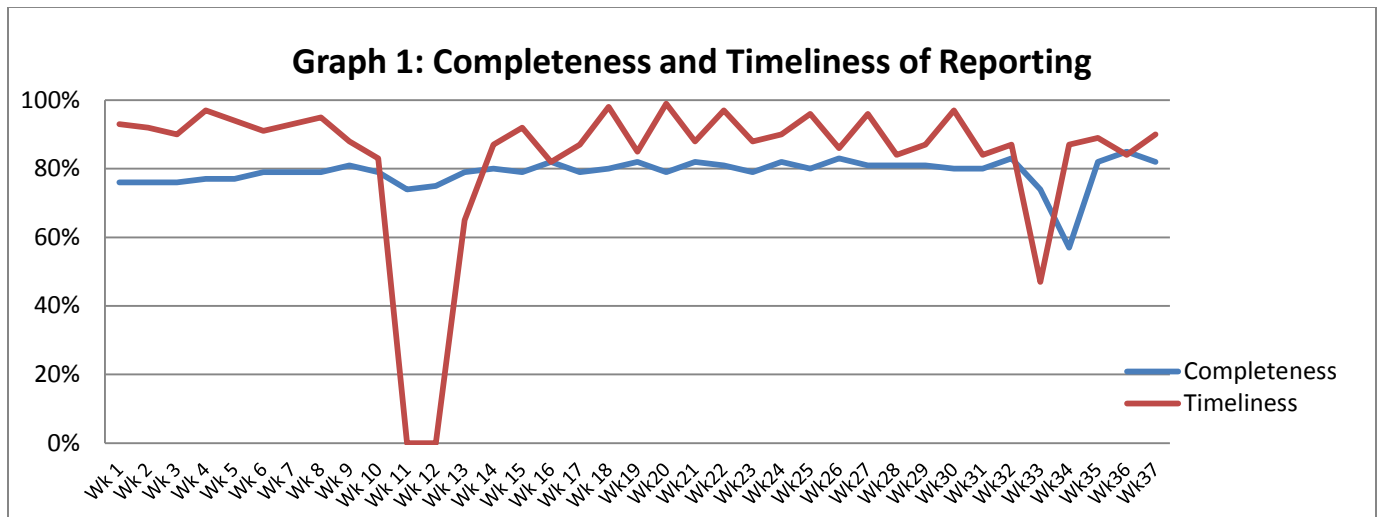


**Highlights:**

- ❖ 48 suspected Measles reported mainly from Deir Ezzor, Aleppo and Raqqa.
- ❖ The decrease of suspected Typhoid cases in Aresha camp continues in week 37 with 12 reported cases.

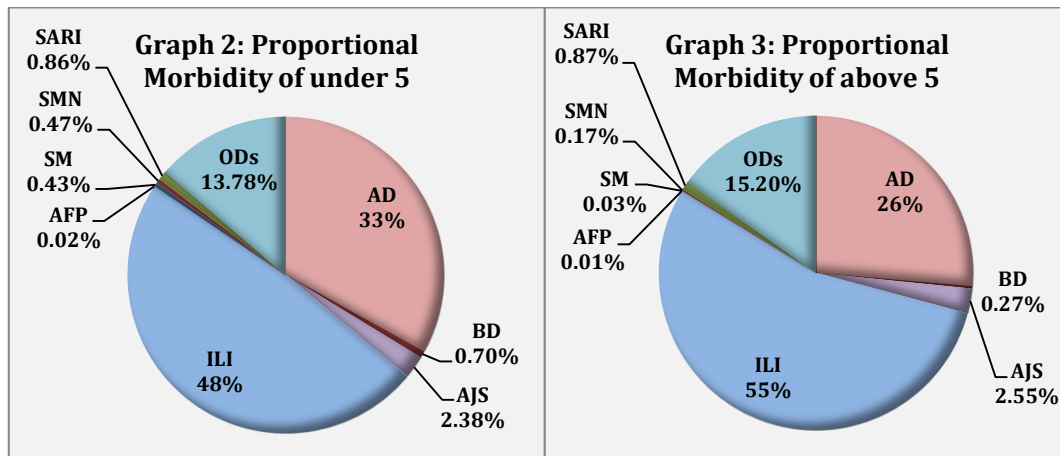
**Completeness & Timeliness of Reporting**

- ❖ The overall completeness of reporting was 82 %; (1039 out of total 1265 EWARS sentinel sites). 14 governorates have reported this week.
- ❖ Timeliness of reporting was 90%.

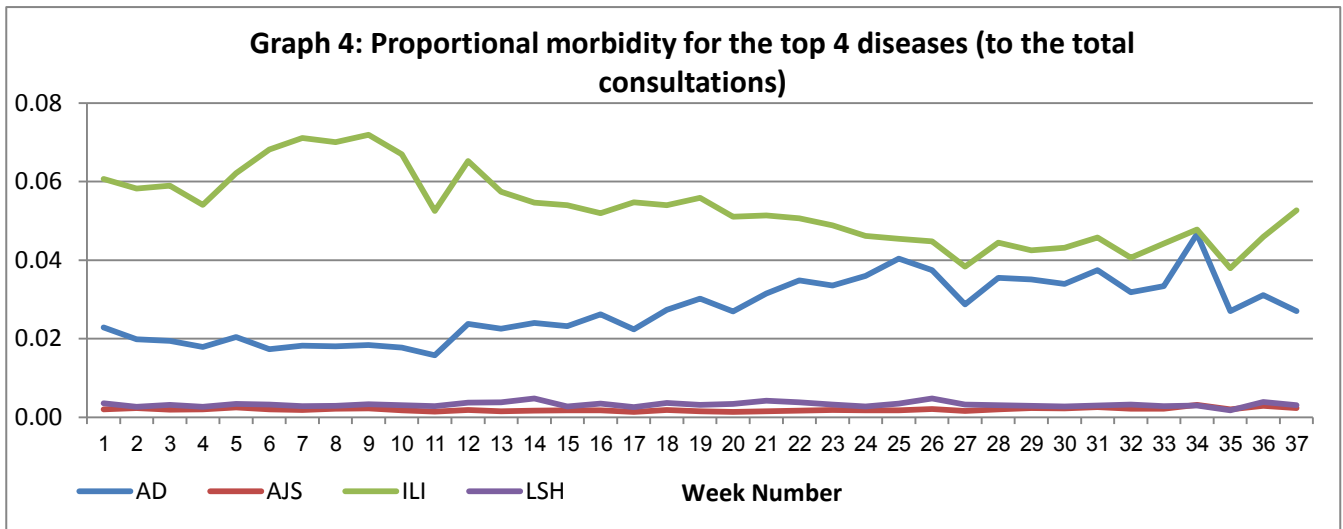


**The Morbidity Cases**

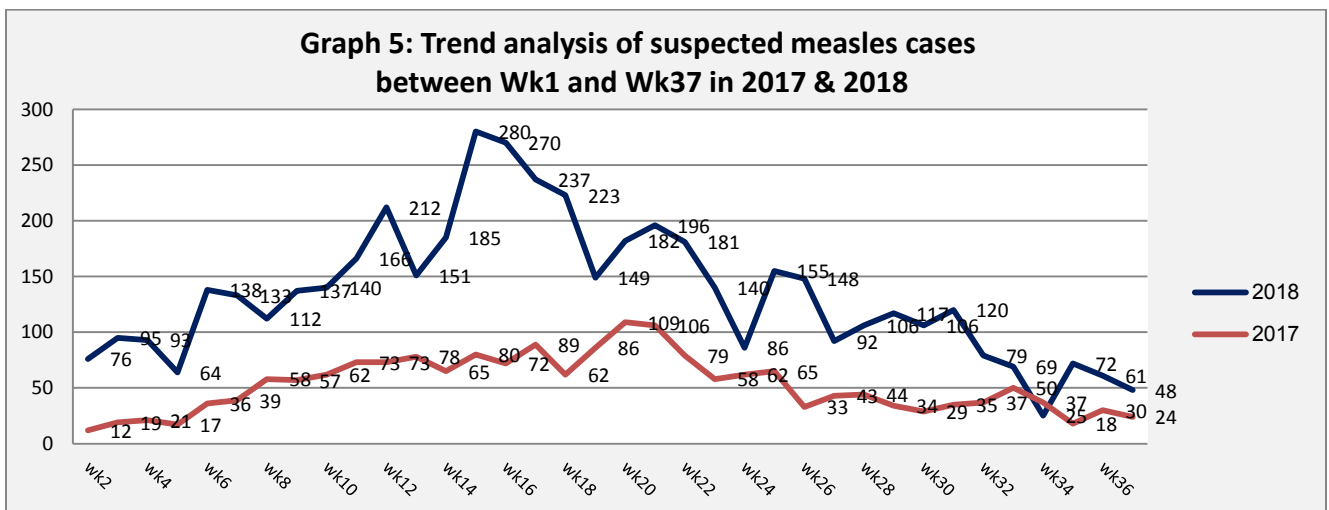
- ❖ Out of a total of 219,934 consultations, 24,489 EWARS notifiable cases were reported; of which 12,722 cases were influenza like illness (51%), 7,135 cases were acute diarrhoea (29%), 608 were acute jaundice syndrome, 212 were severe acute respiratory infection, 48 were suspected measles, 110 were bloody diarrhoea, and 73 were suspected meningitis.
- ❖ Graphs 2 and 3 below show the proportional morbidity among < 5 and ≥ 5 year age groups respectively.



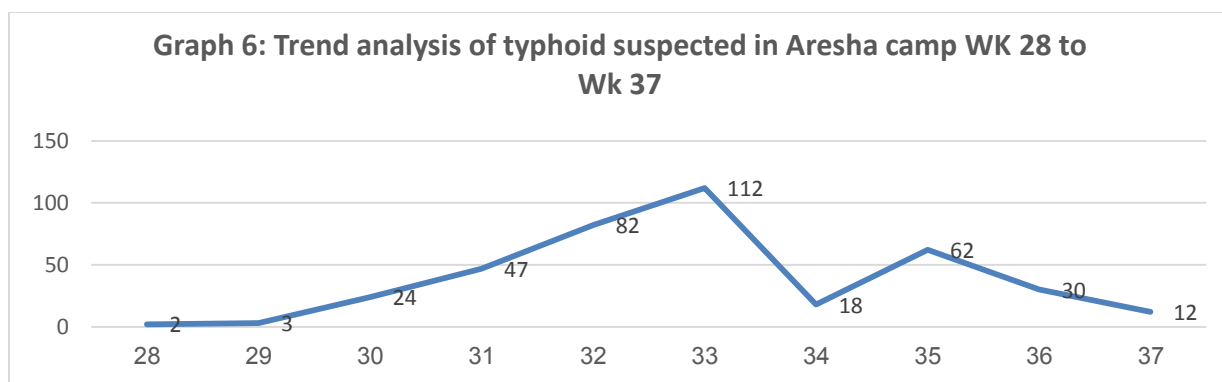
- ❖ 51% of the cases were distributed among males. 58% of the cases were distributed among ≥5 age group.
- ❖ Acute diarrhoea constitutes (33%) among < 5 and (26%) among ≥ 5, while influenza-like illness constitutes (48%) of the cases among <5 and (55%) among ≥ 5.
- ❖ In total 3,577 cases were reported as “other diseases”. The most important diseases reported within this group were; 721 cases of leishmaniasis (mostly from Idleb, Aleppo and Deir Ezzor), 293 cases of brucellosis, 374 cases of typhoid, 6 cases of tuberculosis, 52 pertussis, and 86 mumps.
- ❖ Graph 4: shows the trend analysis of top four diseases to total consultations. It shows an increase in the trend of ILI. The increase is line with the seasonality of upper respiratory infections.



- ❖ Graph 5: the below graph shows the trend analysis of suspected measles cases reported through EWARS. It shows decline in Measles suspected cases.



Graph 6: Trend analysis of suspected typhoid cases in Aresha camp. The graph indicates a decline in the number of cases in week 34; this decrease might be attributed to WASH and health education interventions.



❖ Table 1 shows comparison between reported cases in week-36 and week-37 2018.

Table 1: Comparison between reported cases for week 36 and week 37 in 2018.

Disease	Week 36	Week 37
AD	8,118	7,135
BD	130	110
AWD	0	0
AJS	763	608
ILI	11,892	12,722
AFP	3	4
SM	61	48
SMN	61	73
SARI	202	212
TYF	418	374
PER	68	52
LSH	962	721
BRU	355	293
TB	18	6
SCA	550	518
LIC	763	706
CHP	523	282
MUM	34	86
Others	607	539
<b>Total</b>	<b>25528</b>	<b>24489</b>

### **Measles**

Coordination between, MOH, WHO, UNICEF and MOE, is going on to conduct the second phase of the subnational campaign from 16 to 27 September 2018, this campaign will school children (from 6 year–under 12) across the 7 governorates (Al-Hassakeh, Deir Ezzor , Ar-Raqqa, Aleppo, rural Damascus, Homs, Hama). The total number of targeted children is 1,452,293.

### **Suspected typhoid, Aresha camp, Al Hassakeh:**

(423) suspected cases were reported since week 30; in week 37 the number of incident cases was 12. No deaths or hospitalizations have been reported. Most of cases are female above 5 years old. Symptoms include fever, headache, abdominal pain, and joint pain. Diagnosis of suspected typhoid is based on Widal tests (result above 1/40). Bacterial cultures of 6 blood samples were negative for salmonella Typhi. WHO supports the medical point at the camp, and provides the camp with supplies for case management. WHO is implementing a raising awareness campaign of water borne diseases by 4 trained health education teams to provide health education sessions on the mean prevention measures about the principles of personal, in addition to provide health education for patients and emphasis on hands washing. This campaign will be implemented in 5 IDPs camps in Al Hassakeh.

**Table-2: Distribution of cases per age group, and by Governorate-week-37, 2018:**

Code	age group	Idleb	Hassaka	Raqqqa	Sweida	Qunaitra	Lattakia	Aleppo	Hama	Homs	Daraa	Damascus	DierEzor	Rural Damascus	Tartous	Grand Total
AD	<5	207	199	130	137	67	303	546	213	129	128	360	581	310	94	3,404
	≥5	155	208	94	113	57	460	475	132	87	140	509	650	444	207	3,731
BD	<5	0	34	16	6	0	0	0	1	0	3	1	10	0	1	72
	≥5	0	18	4	6	0	0	1	0	0	2	2	5	0	0	38
AWD	<5	0	0	0	0	0	0	0	0	0	0	0	0	0	0	0
	≥5	0	0	0	0	0	0	0	0	0	0	0	0	0	0	0
AJS	<5	5	24	37	23	0	2	16	11	4	10	10	91	11	2	246
	≥5	4	38	34	38	2	17	50	36	21	25	45	16	25	11	362
ILI	<5	0	229	47	190	227	971	789	122	107	249	317	623	787	330	4,988
	≥5	0	178	32	197	456	1,516	1,183	124	136	512	601	594	1,107	1,098	7,734
AFP	<5	0	0	0	0	0	0	1	0	0	0	0	1	0	0	2
	≥5	0	0	0	0	0	1	0	0	0	0	1	0	0	0	2
SM	<5	0	4	6	0	0	0	7	0	1	0	0	25	0	1	44
	≥5	0	1	1	0	0	0	1	0	0	0	1	0	0	0	4
SMN	<5	0	2	10	2	0	2	1	1	1	1	5	23	0	1	49
	≥5	0	10	3	0	0	2	0	3	1	0	2	1	0	2	24
SARI	<5	0	15	9	1	0	0	0	18	0	0	6	37	0	3	89
	≥5	0	3	8	6	0	6	1	13	0	0	47	34	0	5	123
Others	<5	610	76	70	21	18	9	159	23	25	10	0	284	117	0	1,422
	≥5	326	154	60	13	52	34	320	176	43	38	30	648	252	9	2,155
<b>Total Sum of &lt; 5</b>		822	583	325	380	312	1,287	1,519	389	267	401	699	1,675	1,225	432	10,316
<b>Total Sum of ≥ 5</b>		485	610	236	373	567	2,036	2,031	484	288	717	1,238	1,948	1,828	1,332	14,173
<b>Total</b>		<b>1,307</b>	<b>1,193</b>	<b>561</b>	<b>753</b>	<b>879</b>	<b>3,323</b>	<b>3,550</b>	<b>873</b>	<b>555</b>	<b>1,118</b>	<b>1,937</b>	<b>3,623</b>	<b>3,053</b>	<b>1,764</b>	<b>24,489</b>