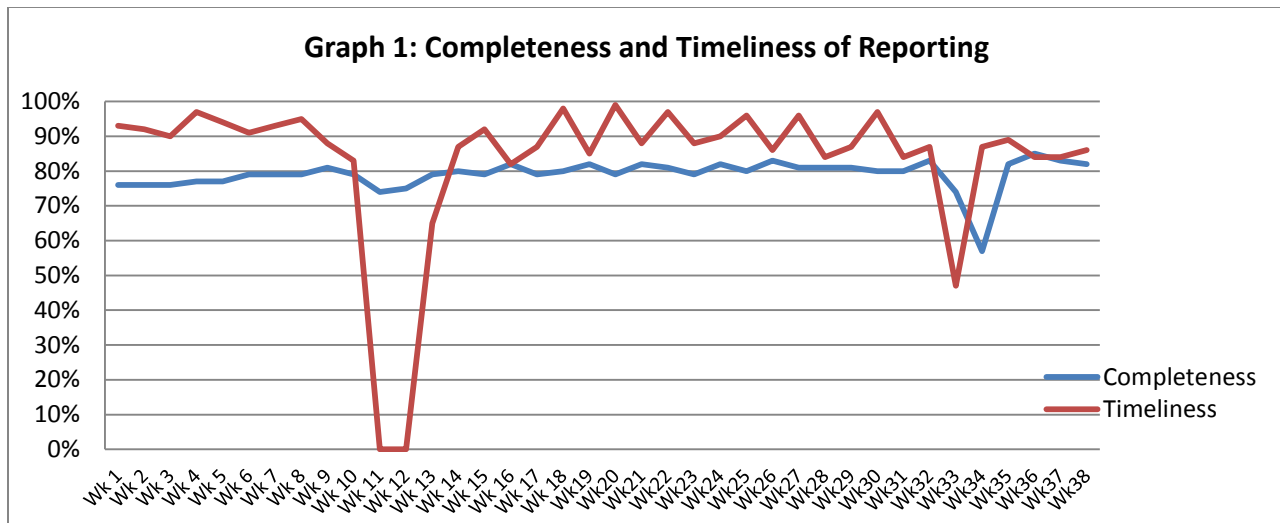


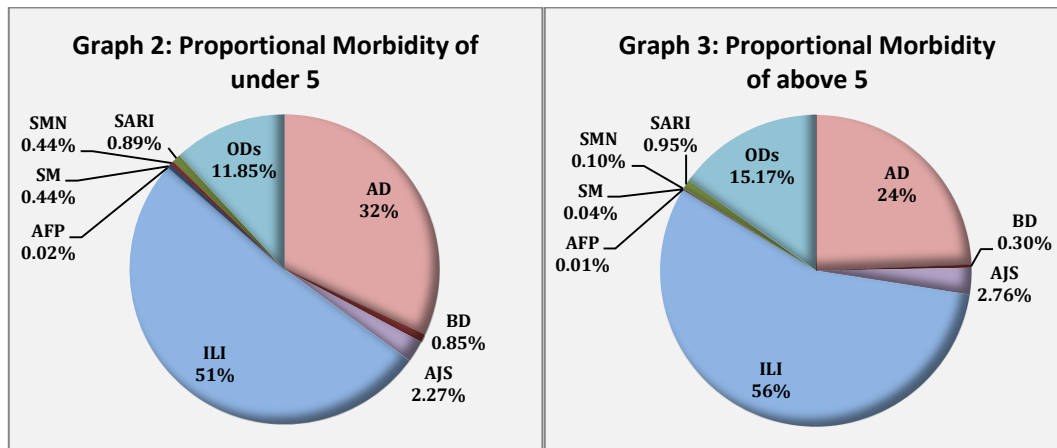
Highlights:

- ❖ 53 suspected Measles reported mainly from Deir Ezzor and Aleppo.
- ❖ No cases of suspected typhoid were detected this week in Areesha camp in Hassaka.
- ❖ **Completeness & Timeliness of Reporting**
- ❖ The overall completeness of reporting was 82 %; (1028 out of total 1265 EWARS sentinel sites). 14 governorates have reported this week.
- ❖ Timeliness of reporting was 86%.

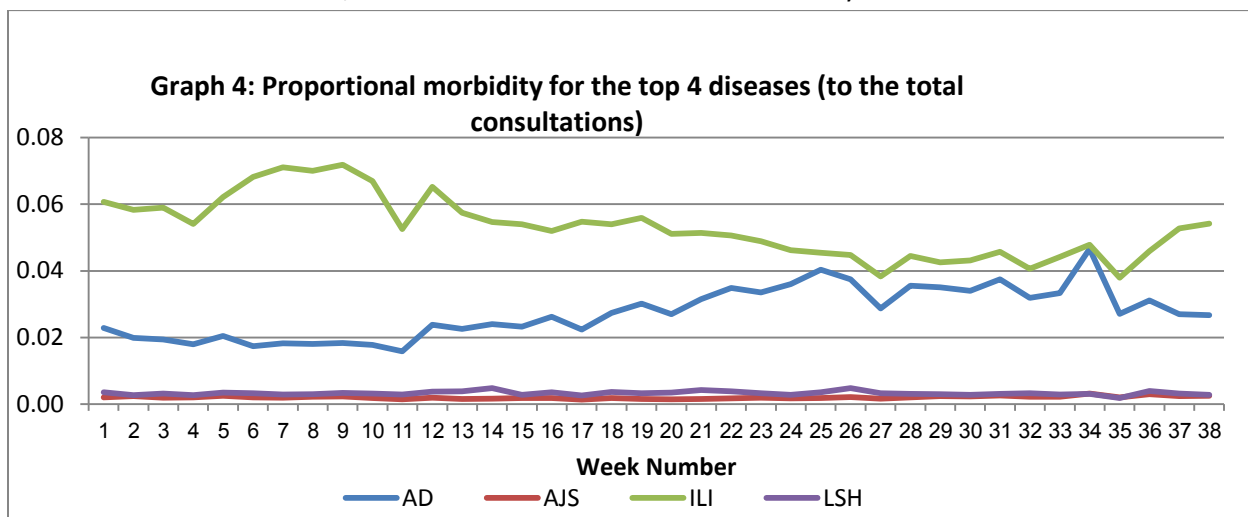


The Morbidity Cases

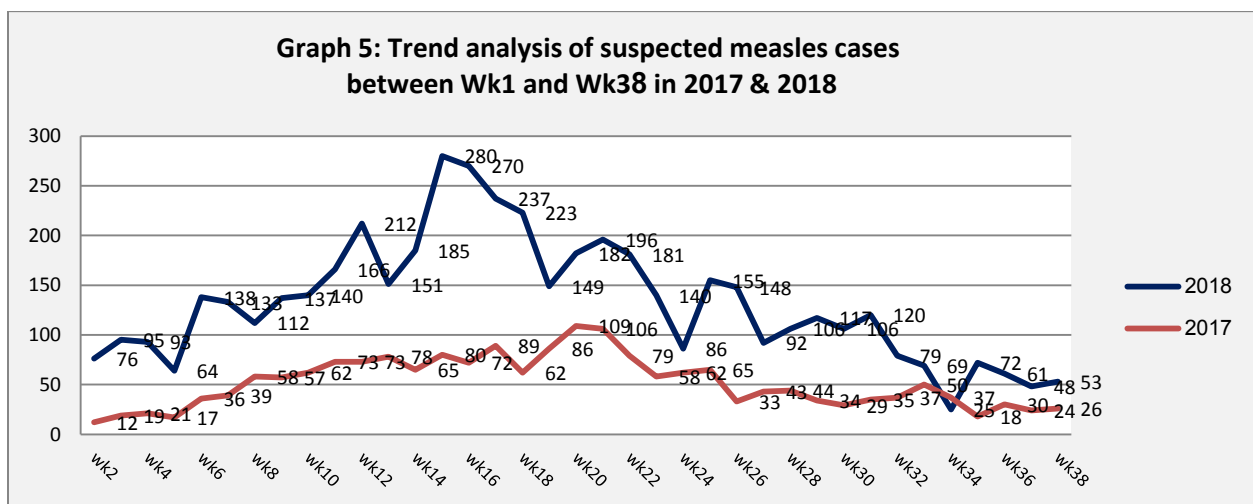
- ❖ Out of a total of 238,380 consultations, 25,236 EWARS notifiable cases were reported; of which 13,678 cases were influenza like illness (54%), 6,950 cases were acute diarrhoea (28%), 645 were acute jaundice syndrome, 234 were severe acute respiratory infection, 53 were suspected measles, 134 were bloody diarrhoea, and 60 were suspected meningitis.
- ❖ Graphs 2 and 3 below show the proportional morbidity among < 5 and ≥ 5 year age groups respectively.



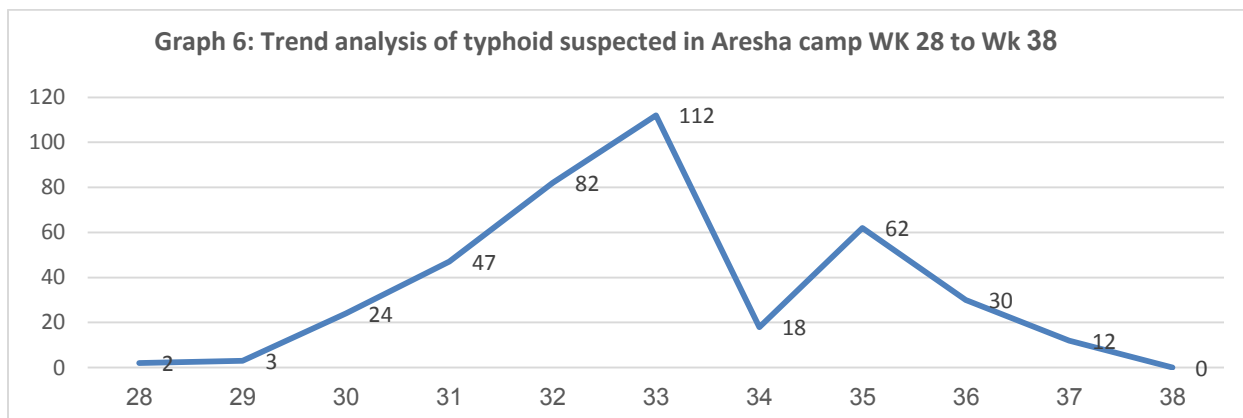
- ❖ 51% of the cases were distributed among males. 58% of the cases were distributed among ≥ 5 age group.
- ❖ Acute diarrhoea constitutes (32%) among < 5 and (24%) among ≥ 5 , while influenza-like illness constitutes (51%) of the cases among < 5 and (56%) among ≥ 5 .
- ❖ In total 3,478 cases were reported as “other diseases”. The most important diseases reported within this group were; 407 cases of leishmaniasis (mostly from Aleppo, Idleb and Deir Ezzor), 286 cases of brucellosis, 297 cases of typhoid, 13 cases of tuberculosis, 17 pertussis, and 11 mumps.
- ❖ Graph 4: shows the trend analysis of top four diseases to total consultations. It shows an increase in the trend of ILI in the week, this increase is in line with the seasonality of the disease.



- ❖ Graph 5: the below graph shows the trend analysis of suspected measles cases reported through EWARS. The graph shows decline in the number of reported cases.



Graph 6: Trend analysis of suspected typhoid cases in Aresha camp. The graph indicates 0 cases reported in week 38.



❖ Table 1 shows comparison between reported cases in week-37 and week-38 2018.

Disease	Week 37	Week 38
AD	7,135	6,950
BD	110	134
AWD	0	0
AJS	608	645
ILI	12,722	13,678
AFP	4	4
SM	48	53
SMN	73	60
SARI	212	234
TYF	374	324
PER	52	40
LSH	721	685
BRU	293	311
TB	6	13
SCA	518	478
LIC	706	731
CHP	282	306
MUM	86	58
Others	539	532
Total	24489	25236

Measles

The subnational measles campaign has started this week, and runs from 16-27 September 2018 across 7 governorates (Al-Hasakeh, Deir Ezzor, Ar-Raqqa , Aleppo, rural Damascus ,Homs, Hama):

- The campaign in rural Deir Ezzor has been postponed for one week due to security and logistic difficulties. Preliminary results indicate that 379,555 school children were vaccinated (26% of target)
- DoH Raqqa has vaccinated 84,124 children in 6 districts, DOH Ar-Raqqa has also vaccinated Menbej district as agreed with the local authority.

Suspected typhoid, Aresha camp, Al Hassakeh:

(423) suspected cases were reported since week 30; no cases were reported in week 38. WHO is implementing a raising awareness campaign of water borne diseases by 4 trained health education teams to provide health education sessions on the main prevention measures about the principles of personal, in addition to provide health education for patients and emphasis on hands washing. This campaign will be implemented in 5 IDPs camps in Al Hassakeh.

Table-2: Distribution of cases per age group, and by Governorate-week-38, 2018:

Code	age group	Idleb	Hassaka	Raqqa	Sweida	Qunaitra	Lattakia	Aleppo	Hama	Homs	Daraa	Damascus	DierEzor	Rural Damascus	Tartous	Grand Total	
AD	< 5	175	166	201	127	57	264	546	189	149	94	415	482	401	106	3,372	6,950
	≥ 5	139	152	197	135	51	326	522	143	80	129	500	608	372	224	3,578	
BD	< 5	0	29	18	9	0	1	0	1	1	8	0	23	0	0	90	134
	≥ 5	0	12	13	5	0	4	0	0	0	1	5	3	0	1	44	
AWD	< 5	0	0	0	0	0	0	0	0	0	0	0	0	0	0	0	0
	≥ 5	0	0	0	0	0	0	0	0	0	0	0	0	0	0	0	
AJS	< 5	1	17	65	8	0	1	24	5	6	14	7	82	8	2	240	645
	≥ 5	2	24	57	22	2	19	73	48	21	36	37	41	9	14	405	
ILI	< 5	5	193	29	221	178	1,281	985	184	149	138	356	645	634	424	5,422	13,678
	≥ 5	2	211	27	291	407	1,690	1,219	177	215	433	611	676	968	1,329	8,256	
AFP	< 5	0	0	0	0	0	0	0	1	0	1	0	0	0	0	2	4
	≥ 5	0	0	0	0	0	0	0	2	0	0	0	0	0	0	2	
SM	< 5	0	1	3	1	0	1	5	1	0	1	2	30	2	0	47	53
	≥ 5	0	1	0	0	0	0	1	2	0	1	0	1	0	0	6	
SMN	< 5	0	1	6	1	0	0	1	5	0	1	5	24	2	0	46	60
	≥ 5	0	0	2	0	0	0	0	4	1	0	3	3	1	0	14	
SARI	< 5	0	16	11	0	0	2	0	16	0	0	12	31	0	6	94	234
	≥ 5	0	4	14	9	0	0	1	24	0	0	51	28	0	9	140	
Others	< 5	510	62	30	24	12	7	137	22	43	17	16	262	104	6	1,252	3,478
	≥ 5	294	103	53	29	27	63	362	155	102	35	29	688	260	26	2,226	
Total Sum of < 5		691	485	363	391	247	1,557	1,698	424	348	274	813	1,579	1,151	544	10,565	25,236
Total Sum of ≥ 5		437	507	363	491	487	2,102	2,178	555	419	635	1,236	2,048	1,610	1,603	14,671	
Total		1,128	992	726	882	734	3,659	3,876	979	767	909	2,049	3,627	2,761	2,147	25,236	