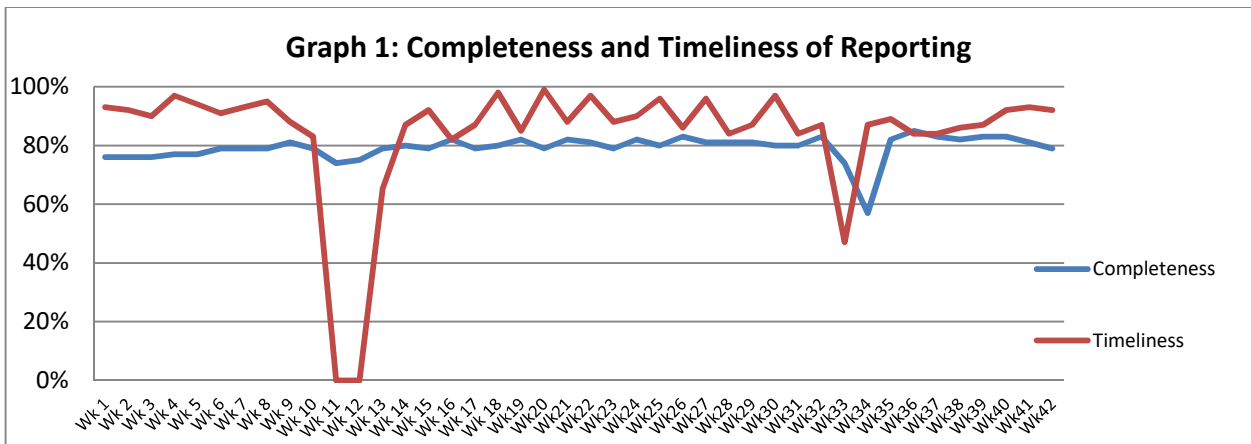


Highlights:

- ❖ 80 suspected Measles reported mainly from Deir Ezzor and Idleb.
- ❖ 73 suspected acute jaundice syndrome were reported in Daraa in week 42.
- ❖ 4 cases of acute paralysis flaccid reported from Hamah (1), Homs (2), Deir Ezzor (1).

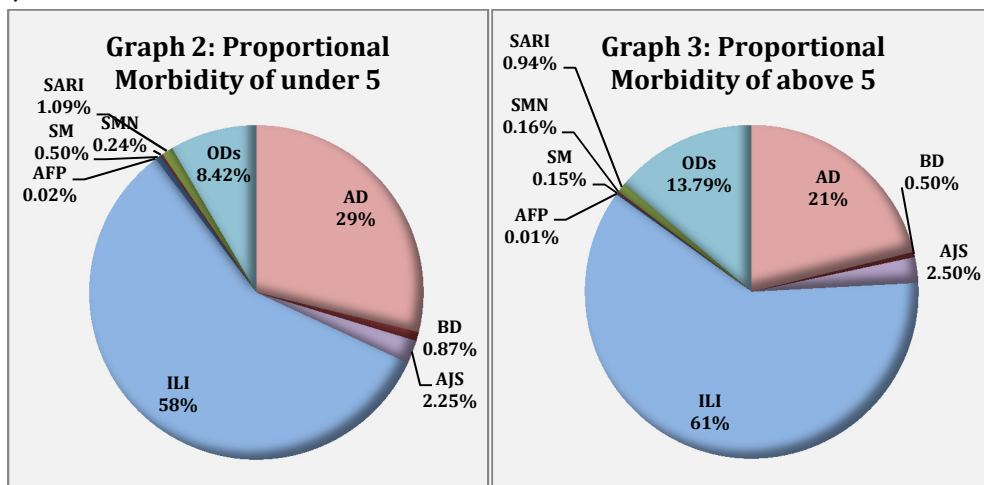
Completeness & Timeliness of Reporting

- ❖ The overall completeness of reporting was 79 %; (1005 out of total 1265 EWARS sentinel sites). 14 governorates have reported this week.
- ❖ Timeliness of reporting was 93%.

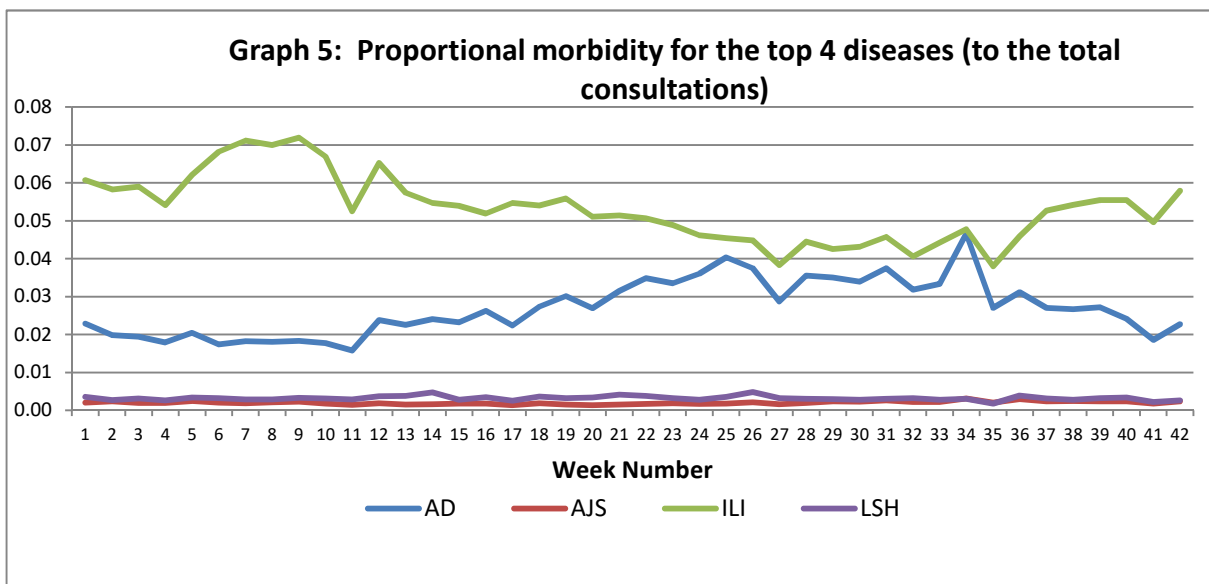


The Morbidity Cases

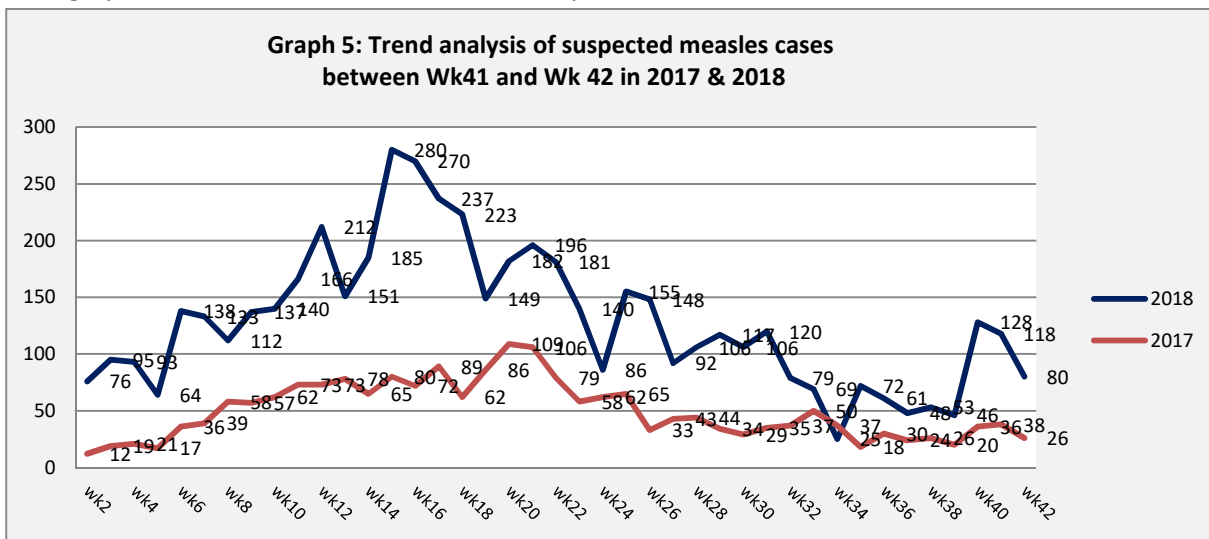
- ❖ Out of a total of 261,872 consultations, 26,916 EWARS notifiable cases were reported; of which 16,027 cases were influenza like illness (60%), 6,650 cases were acute diarrhoea (24%), 644 were acute jaundice syndrome, 270 were severe acute respiratory infection, 80 were suspected measles, 176 were bloody diarrhoea, 52 were suspected meningitis, and 4 cases of acute flaccid paralysis.
- ❖ Graphs 2 and 3 below show the proportional morbidity among < 5 and ≥ 5 year age groups respectively.



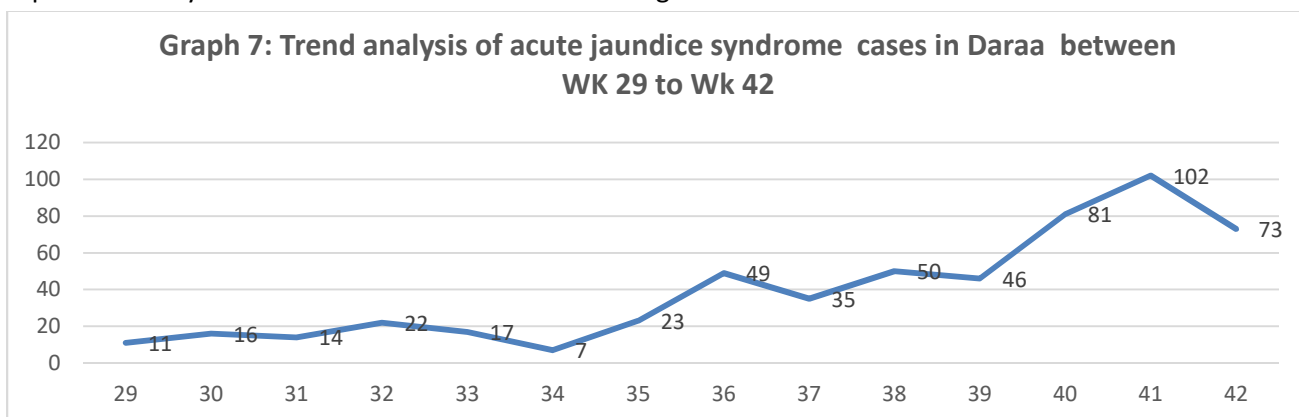
- ❖ Acute diarrhoea constitutes (29%) among < 5 and (21%) among ≥ 5, while influenza-like illness constitutes (58%) of the cases among <5 and (61) cases among ≥ 5.
- ❖ 50% of the cases were distributed among males. 58% of the cases were distributed among ≥5 age group.
- ❖ In total 3,113 cases were reported as “other diseases”. The most important diseases reported within this group were; 728 cases of leishmaniasis (mostly from Aleppo, Idleb and Deir Ezzor), 207 cases of brucellosis, 235 cases of typhoid, 13 cases of tuberculosis, 69 pertussis, and 45 mumps.
- ❖ Graph 4: shows the trend analysis of top four diseases to total consultations.



- ❖ Graph 5: the below graph shows the trend analysis of suspected measles cases reported through EWARS. The graph shows decrease in the number of reported cases in week 42.



- ❖ Graph 7 shows the trend analysis of acute jaundice syndrome cases, the increase started in week 35, and reported mainly from the eastern rural areas of Daraa governorates.



- ❖ Table 1 shows comparison between reported cases in week-41 and week-42 2018.

Table 1: Comparison between reported cases for week 41 and week 42 in 2018.

Disease	Week 41	Week 42
AD	6,757	6,550
BD	142	176
AWD	0	0
AJS	636	644
ILI	17,224	16,027
AFP	7	4
SM	118	80
SMN	62	52
SARI	345	270
TYF	317	235
PER	46	69
LSH	744	728
BRU	291	207
TB	6	13
SCA	610	490
LIC	992	647
CHP	293	156
MUM	64	45
Others	655	523
Total	29312	26916

Acute Jaundice Syndrome, Daraa Governorate

Increase of suspected Hepatitis A cases was noticed in Dar'a governorate since week 35. The increase reported mainly from the eastern rural areas. The number of reported acute jaundice syndrome cases in week 42 is 73 cases, the cumulative number of cases reported since week 35 is 474. Field investigation visit was conducted by RDT of Daraa DoH, the team visited 4 schools in two villages, investigated 13 suspected cases, provided health education and distributed educational brochures. The team also distributed 10,000 chlorine tablets on households and schools in the affected areas.

Acute flaccid paralysis:

- The second round of supplementary national immunization days in 2018 for polio was completed between 7 - 11 October. Bivalent oral polio vaccine (bOPV) was administered for all children under 5 years of age. The estimated target was 2.8 million.
- A total of 2,319,714 children under-5 years were reported vaccinated which represents 83% of the total target. The coverage was 90% and above in all governorates except four; Idlib (1%) due to inaccessibility, Aleppo 86%, Damascus 77% (target is not corrected after population from other governorates returned back to their own villages) and Deir Ezzor 20% due to lack of coordination.

Table-2: Distribution of cases per age group, and by Governorate-week-42, 2018:

Code	age group	Idleb	Hassaka	Raqqa	Sweida	Qunaitra	Lattakia	Aleppo	Hama	Homs	Daraa	Damascus	DierEzor	Rural Damascus	Tartous	Grand Total	
AD	< 5	56	286	208	27	57	309	492	181	92	108	459	624	221	100	3,220	6,550
	≥ 5	45	197	122	37	57	427	434	121	65	123	600	646	276	180	3,330	
BD	< 5	0	14	15	0	0	1	0	0	1	0	3	63	0	0	97	176
	≥ 5	0	46	17	0	0	2	0	0	0	1	4	8	0	1	79	
AWD	< 5	0	0	0	0	0	0	0	0	0	0	0	0	0	0	0	0
	≥ 5	0	0	0	0	0	0	0	0	0	0	0	0	0	0	0	
AJS	< 5	8	16	71	1	0	2	30	13	4	16	9	76	5	0	251	644
	≥ 5	0	24	65	18	2	9	38	50	16	57	48	34	21	11	393	
ILI	< 5	0	262	170	54	112	1,388	1,189	226	121	203	448	1,121	589	572	6,455	16,027
	≥ 5	0	264	61	105	296	1,739	1,837	199	203	439	803	1,189	997	1,440	9,572	
AFP	< 5	0	0	0	0	0	0	0	0	1	0	0	1	0	0	2	4
	≥ 5	0	0	0	0	0	0	0	1	1	0	0	0	0	0	2	
SM	< 5	11	5	5	0	0	3	2	1	0	2	3	24	0	0	56	80
	≥ 5	9	3	2	0	0	0	0	2	0	1	0	7	0	0	24	
SMN	< 5	0	1	7	0	0	1	2	2	0	0	1	12	1	0	27	52
	≥ 5	0	2	13	1	0	2	4	1	0	0	1	0	0	1	25	
SARI	< 5	0	25	13	0	0	2	1	39	0	0	11	23	0	8	122	270
	≥ 5	0	3	18	10	0	7	2	23	0	0	52	30	0	3	148	
Others	< 5	146	109	14	0	8	19	177	25	27	10	14	286	106	0	941	3,113
	≥ 5	100	117	41	12	32	60	459	192	60	48	39	718	284	10	2,172	
Total Sum of < 5		221	718	503	82	177	1,725	1,893	487	246	339	948	2,230	922	680	11,171	26,916
Total Sum of ≥ 5		154	656	339	183	387	2,246	2,774	589	345	669	1,547	2,632	1,578	1,646	15,745	
Total		375	1,374	842	265	564	3,971	4,667	1,076	591	1,008	2,495	4,862	2,500	2,326	26,916	