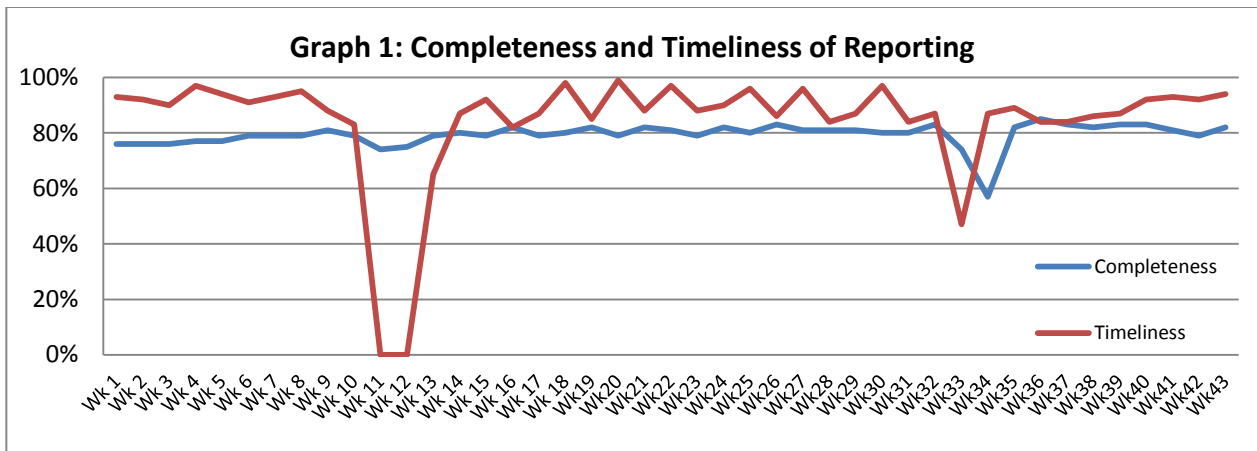


Highlights:

- ❖ 56 suspected Measles reported mainly from Deir Ezzor and Raqqa.
- ❖ 84 suspected acute jaundice syndrome were reported in Daraa in week 43.
- ❖ Increase cases of suspected hepatitis A was reported among Afrin IDPs in Aleppo governorate.

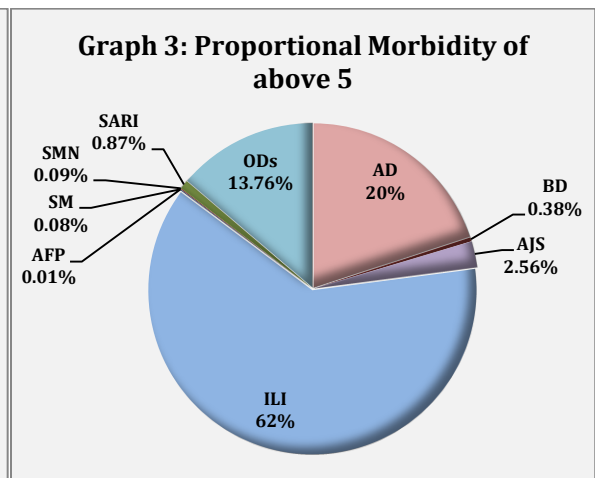
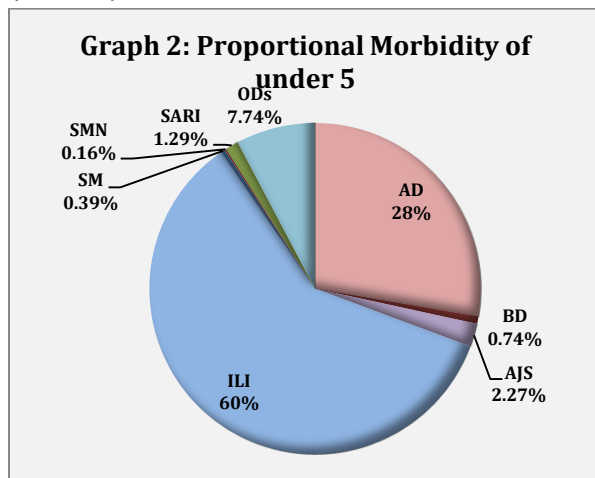
Completeness & Timeliness of Reporting

- ❖ The overall completeness of reporting was 82 %; (1034 out of total 1265 EWARS sentinel sites). 14 governorates have reported this week.
- ❖ Timeliness of reporting was 94%.

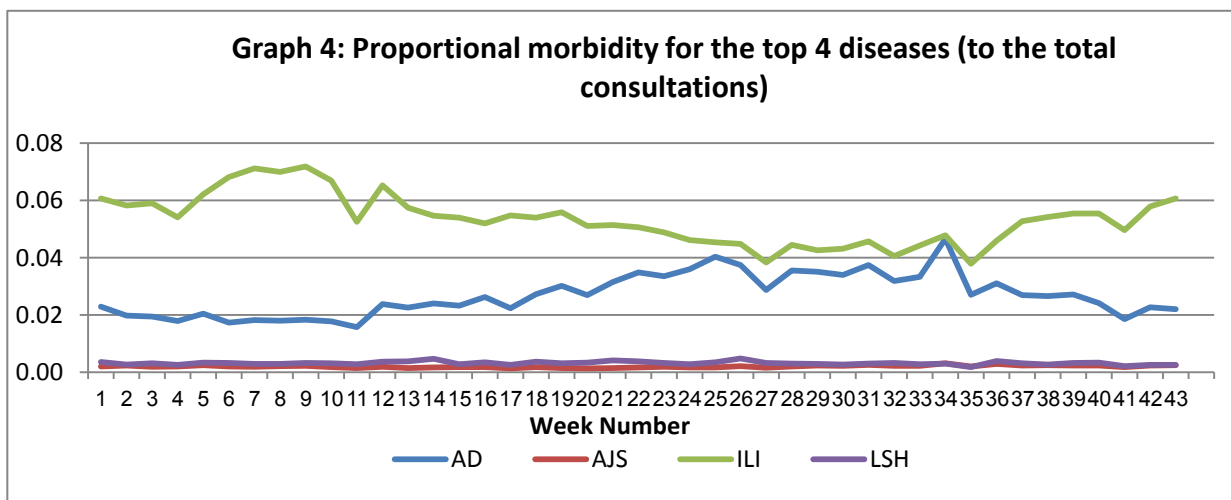


The Morbidity Cases

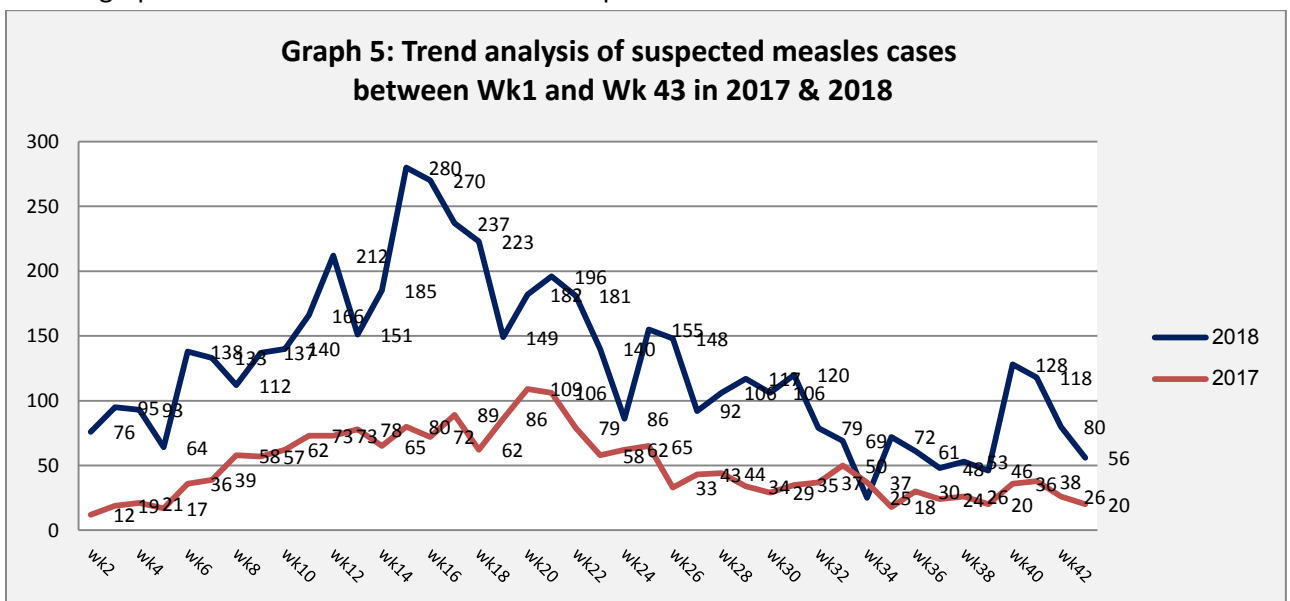
- ❖ Out of a total of 253,102 consultations, 26,489 EWARS notifiable cases were reported; of which 16,209 cases were influenza like illness (61%), 6,160 cases were acute diarrhoea (23%), 645 were acute jaundice syndrome, 278 were severe acute respiratory infection, 56 were suspected measles, 141 were bloody diarrhoea, 32 were suspected meningitis, and 1 case of acute flaccid paralysis.
- ❖ Graphs 2 and 3 below show the proportional morbidity among < 5 and ≥ 5 year age groups respectively.



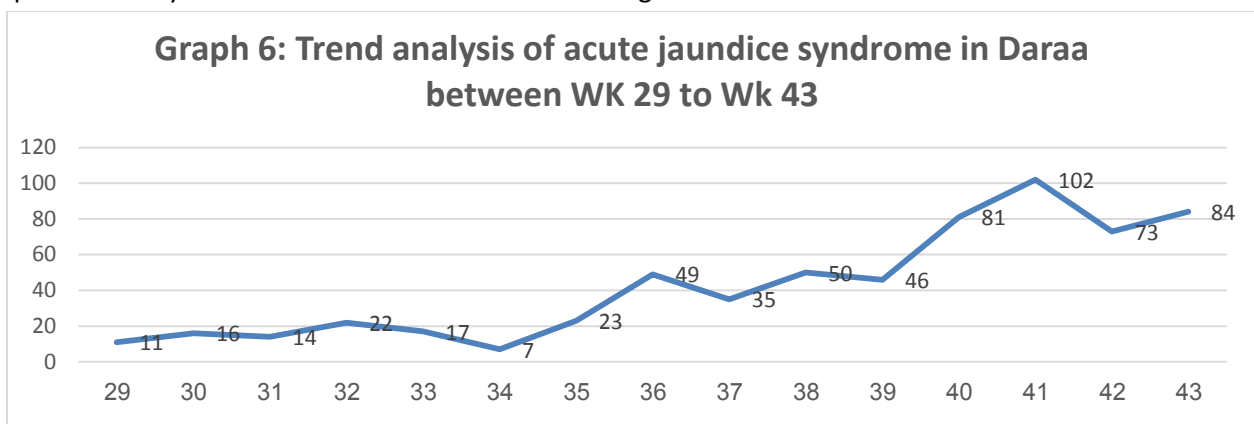
- ❖ Acute diarrhoea constitutes (28%) among < 5 and (20%) among ≥ 5, while influenza-like illness constitutes (60%) of the cases among <5 and (62%) cases among ≥ 5.
- ❖ 50% of the cases were distributed among males. 58% of the cases were distributed among ≥5 age group.
- ❖ In total 2,967 cases were reported as “other diseases”. The most important diseases reported within this group were; 749 cases of leishmaniasis (mostly from Deir Ezzor, Aleppo and Hassakeh), 158 cases of brucellosis, 241 cases of typhoid, 11 cases of tuberculosis, 67 pertussis, and 32 mumps.
- ❖ Graph 4: shows the trend analysis of top four diseases to total consultations. It shows increase in the trend of ILI, this increase is in line with the seasonality of this disease.



- ❖ Graph 5: the below graph shows the trend analysis of suspected measles cases reported through EWARS. The graph shows decrease in the number of reported cases in week 41.



- ❖ Graph 7 shows the trend analysis of acute jaundice syndrome cases, the increase started in week 35, and reported mainly from the eastern rural areas of Daraa governorates.



- ❖ Table 1 shows comparison between reported cases in week-42 and week-43 2018.

Table 1: Comparison between reported cases for week 42 and week 43 in 2018.

Disease	42	43
AD	6,550	6,160
BD	176	141
AWD	0	0
AJS	644	645
ILI	16,027	16,209
AFP	4	1
SM	80	56
SMN	52	32
SARI	270	278
TYF	235	241
PER	69	67
LSH	728	749
BRU	207	158
TB	13	11
SCA	490	451
LIC	647	670
CHP	156	197
MUM	45	32
Others	523	391
Total	26916	26489

Acute Jaundice Syndrome, Daraa Governorate

Increase of suspected Hepatitis A cases has been reported in Dar'a governorate since week 35. The increase reported mainly from the eastern rural areas. The cumulative number of cases reported since week 35 is 558, in week 43 the number of reported cases was 84. Most of the cases (75%) were above 5 years old, and 37% of cases were males. The diagnosis was based on liver functions tests (ALT, AST, Bilirubin) and clinical signs. Blood tests for antibodies (IgM, and IgG) and Elisa tests are not conducted at the public health laboratories. For laboratory confirmation of the outbreak; samples (blood and serum) were collected from 6 suspected cases and sent to WHO reference lab.

Acute Jaundice Syndrome, among Afrin IDPs, Aleppo Governorate.

In response to the increase of suspected Hepatitis A among Afrin IDPs in fafen camps, and to conduct further lab analysis and confirm Hepatitis A outbreak, the rapid response team of Aleppo collected samples (blood and serum) from 13 AJS cases, to be tested for HAC and HEV at WHO reference lab. On the other hand, 15000 brochures of prevention of Hepatitis A were provided to NNGOs partners to be distributed in the affected area.

Table-2: Distribution of cases per age group, and by Governorate-week-43, 2018:

Code	age group	Idleb	Hassaka	Raqqa	Sweida	Qunaitra	Lattakia	Aleppo	Hama	Homs	Daraa	Damascus	DierEzor	Rural Damascus	Tartous	Grand Total	
AD	< 5	9	195	81	106	39	403	327	109	83	129	515	570	275	205	3,046	6,160
	≥ 5	12	266	123	113	54	282	422	167	102	122	391	719	251	90	3,114	
BD	< 5	0	39	5	5	0	1	1	0	0	1	4	2	0	0	58	141
	≥ 5	0	20	12	8	0	0	0	0	1	6	3	33	0	0	83	
AWD	< 5	0	0	0	0	0	0	0	0	0	0	0	0	0	0	0	0
	≥ 5	0	0	0	0	0	0	0	0	0	0	0	0	0	0	0	
AJS	< 5	0	23	43	15	3	7	46	58	19	67	35	47	13	14	390	645
	≥ 5	0	8	67	7	6	3	22	6	8	17	12	93	4	2	255	
ILI	< 5	0	279	30	278	222	1,591	1,764	257	209	473	768	1,163	860	1,590	9,484	16,209
	≥ 5	0	212	56	219	187	1,371	1,083	235	183	288	463	1,229	625	574	6,725	
AFP	< 5	0	0	0	0	0	0	0	1	0	0	0	0	0	0	1	1
	≥ 5	0	0	0	0	0	0	0	0	0	0	0	0	0	0	0	
SM	< 5	2	0	4	0	0	0	0	0	0	0	0	6	0	0	12	56
	≥ 5	4	8	6	0	0	1	5	1	1	0	2	16	0	0	44	
SMN	< 5	0	2	2	1	0	2	0	5	0	0	1	1	0	0	14	32
	≥ 5	0	1	5	0	0	2	0	0	0	0	1	8	0	1	18	
SARI	< 5	0	4	13	9	0	18	3	16	0	0	53	13	0	4	133	278
	≥ 5	0	36	11	2	0	6	2	38	0	0	10	36	0	4	145	
Others	< 5	26	155	37	64	18	98	452	136	79	34	38	701	245	13	2,096	2,967
	≥ 5	33	89	15	47	8	11	167	18	32	7	6	339	94	5	871	
Total Sum of < 5		37	697	215	478	282	2,120	2,593	582	390	704	1,414	2,503	1,393	1,826	15,234	26,489
Total Sum of ≥ 5		49	640	295	396	255	1,676	1,701	465	327	440	888	2,473	974	676	11,255	
Total		86	1,337	510	874	537	3,796	4,294	1,047	717	1,144	2,302	4,976	2,367	2,502	26,489	