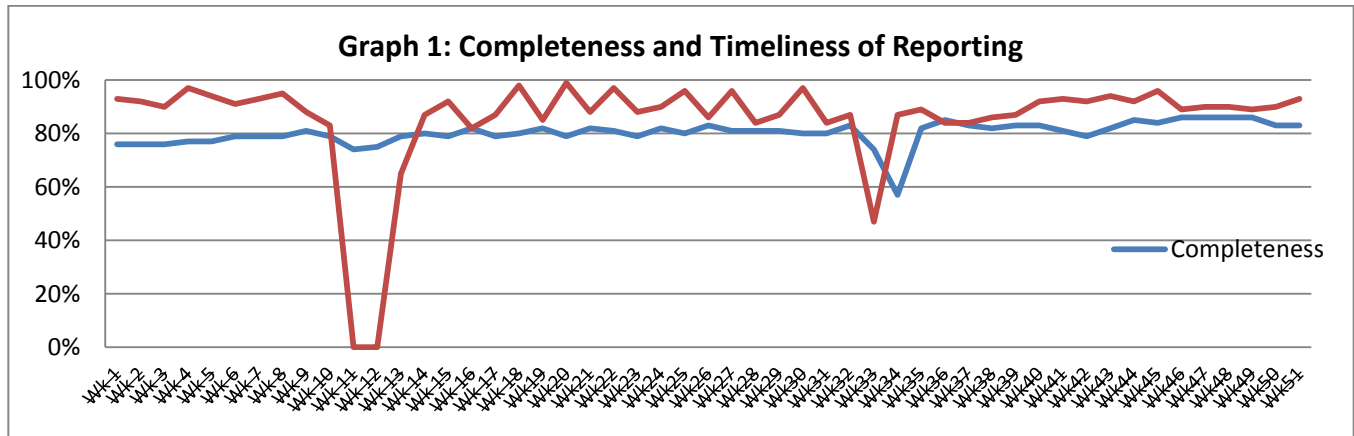


**Highlights:**

- ❖ One case of acute paralysis flaccid reported from Hama.
- ❖ Leishmaniasis increase in Deir Ezzor continues in this week with 1,406 reported cases.

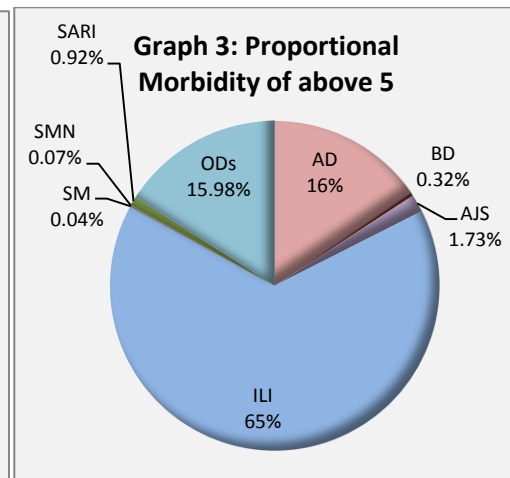
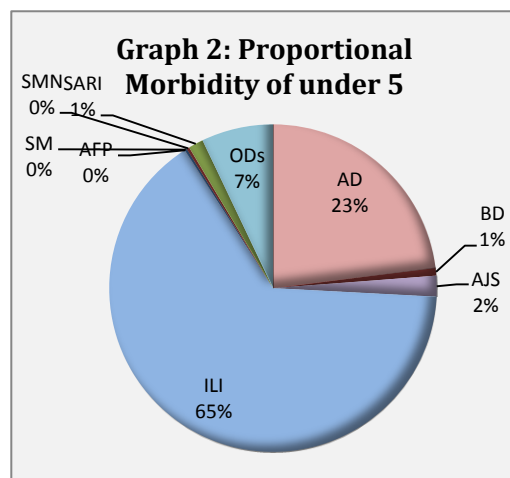
**❖ Completeness& Timeliness of Reporting**

- ❖ The overall completeness of reporting was 83 %; (1080 out of total 1295 EWARS sentinel sites). 14 governorates have reported this week.
- ❖ Timeliness of reporting was 93%.

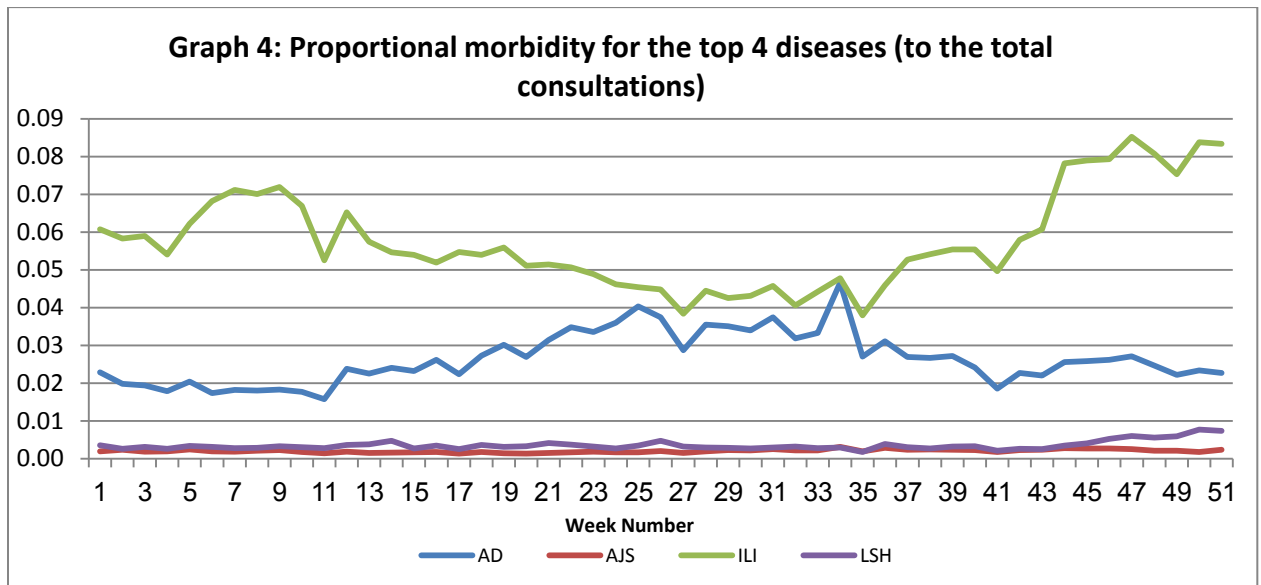


**❖ The Morbidity Cases**

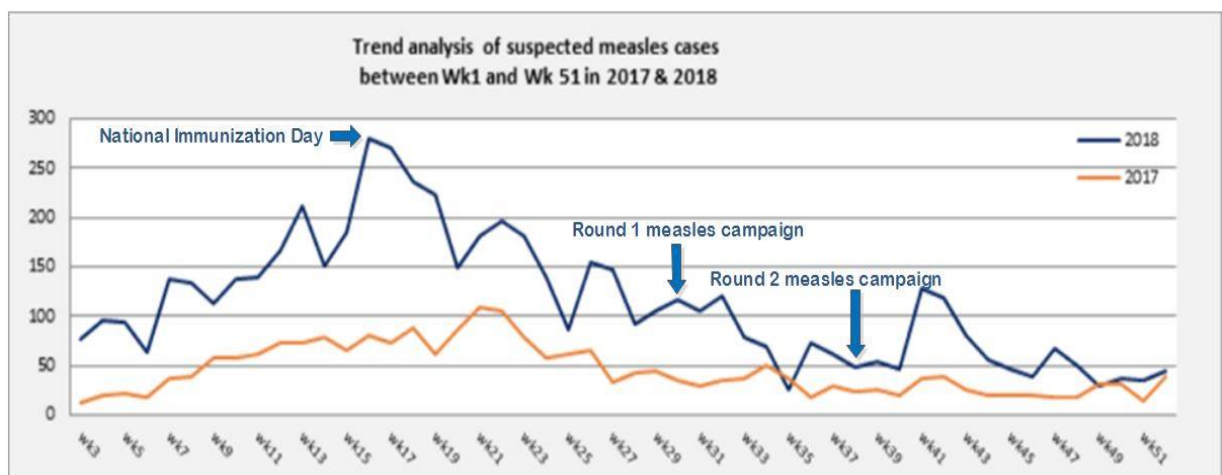
- ❖ Out of a total of 259,247 consultations, 36,095 EWARS notifiable cases were reported; of which 23,568 cases were influenza like illness (65%), 6,691 cases were acute diarrhoea (19%), 671 were acute jaundice syndrome, 412 were severe acute respiratory infection, 45 were suspected measles, 176 were bloody diarrhoea, 55 were suspected meningitis, and 1 case of acute flaccid paralysis.
- ❖ Graphs 2 and 3 below show the proportional morbidity among < 5 and ≥ 5 year age groups respectively.



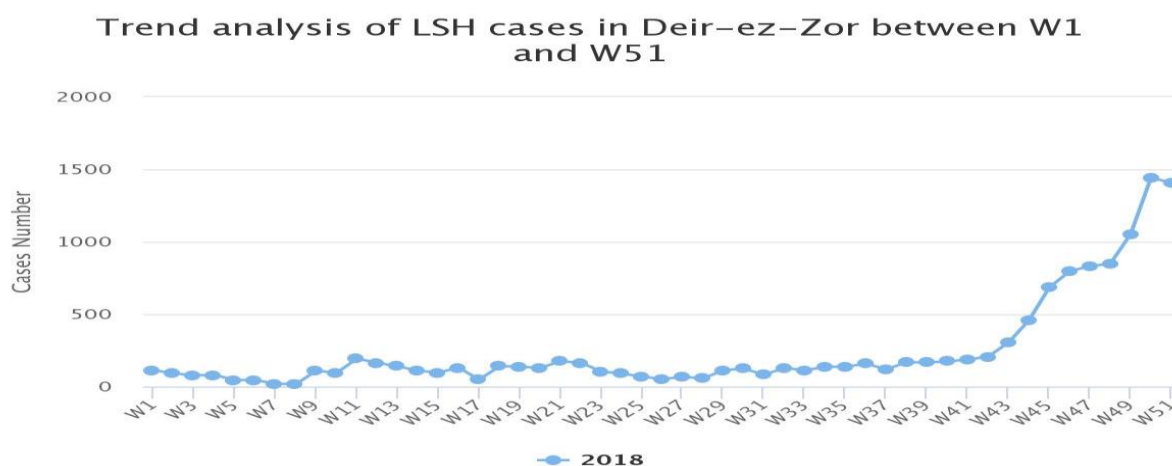
- ❖ Acute diarrhoea constitutes (23%) among < 5 and (16%) among ≥ 5, while influenza-like illness constitutes (65%) of the cases among both <5 and ≥ 5 years old.
- ❖ 50% of the cases were distributed among males. 60% of the cases were distributed among ≥5 age group.
- ❖ In total 4,475 cases were reported as “other diseases”. The most important diseases reported within this group were; 2,030 cases of leishmaniasis (mostly from Deir Ezzor, Aleppo and Hassakeh), 158 cases of brucellosis, 216 cases of typhoid, 23 cases of tuberculosis, 42 pertussis, and 55 mumps.
- ❖ Graph 4: shows the trend analysis of top four diseases to total consultations. An increase of ILI is reported which is in line with the seasonality of the disease.



- ❖ Graph 5: the below graph shows the trend analysis of suspected measles cases reported through EWARS, the graph indicates to Measles campaigns conducted in 2018 as response to SM increased cases.



Graph 5: the below graph shows the trend analysis of suspected Leishmaniasis cases reported through EWARS in Deir Ezzor. The graph shows significant increase in cases since week 43.



❖ Table 1 shows comparison between reported cases in week-50 and week-51 2018.

Table 1: Comparison between reported cases for week 50 and week 51 in 2018.

Disease	50	51
AD	6,621	6,691
BD	83	176
AWD	0	0
AJS	504	671
ILI	22,372	23,568
AFP	1	1
SM	35	45
SMN	39	55
SARI	406	412
TYF	167	216
PER	37	42
LSH	2,004	2,030
BRU	127	158
TB	12	23
SCA	594	582
LIC	707	669
CHP	230	178
MUM	50	55
Others	402	522
<b>Total</b>	<b>34,391</b>	<b>36,094</b>

**Leishmaniasis cases in Deir Ezzor,**

An increase of Leishmaniasis cases has been reported through EWARS weekly reports since week 43. Most of cases reported from Deir Ezzor district, WHO support Leishmaniasis control program in Deir Ezzor with anti-Leishmaniasis medicine, and 2500 long lasting insecticide nets (LLINs). WHO in coordination with MOH and ICRC is developing joint action plan to harmonize activities to control the diseases in NES. Response actions to disease cases will focus on strengthen the diagnosis and case management, strengthen the surveillance and active case detection and screening activities, and promote of prevention measures and health education by local community.

**Table-2: Distribution of cases per age group, and by Governorate-week-51, 2018:**

Code	age group	Idleb	Hassaka	Raqqa	Sweida	Qunaitra	Lattakia	Aleppo	Hama	Homs	Daraa	Damascus	DierEzor	Rural Damascus	Tartous	Grand Total
AD	< 5	656	149	120	77	48	368	240	114	58	93	166	728	354	175	3,346
	≥ 5	639	148	164	89	50	290	371	196	70	92	334	571	263	68	3,345
BD	< 5	0	13	11	2	0	0	0	0	0	1	3	0	38	0	68
	≥ 5	0	15	25	5	0	0	1	0	0	3	2	34	23	0	108
AWD	< 5	0	0	0	0	0	0	0	0	0	0	0	0	0	0	0
	≥ 5	0	0	0	0	0	0	0	0	0	0	0	0	0	0	0
AJS	< 5	24	9	49	8	2	8	18	40	16	46	22	97	25	10	374
	≥ 5	21	6	76	3	5	2	15	5	4	25	5	118	10	2	297
ILI	< 5	882	397	122	336	413	2,242	2,019	300	306	656	1,009	1,798	1,522	2,117	14,119
	≥ 5	1,001	387	106	213	348	1,569	1,284	464	131	418	644	1,390	941	553	9,449
AFP	< 5	0	0	0	0	0	0	0	0	0	0	0	0	0	0	0
	≥ 5	0	0	0	0	0	0	0	1	0	0	0	0	0	0	1
SM	< 5	3	0	1	2	0	1	0	0	1	0	1	0	0	0	9
	≥ 5	0	4	6	1	1	1	3	0	1	2	0	17	0	0	36
SMN	< 5	2	2	5	0	0	0	2	2	0	0	1	0	0	1	15
	≥ 5	0	1	5	1	0	0	2	6	1	0	5	17	2	0	40
SARI	< 5	0	8	22	15	0	5	1	37	0	0	55	42	0	14	199
	≥ 5	0	31	18	3	0	8	2	94	0	0	22	28	0	7	213
Others	< 5	350	172	74	12	23	174	414	159	61	14	34	1,789	157	14	3,447
	≥ 5	39	179	27	10	12	21	131	18	18	2	15	490	64	2	1,028
<b>Total Sum of &lt; 5</b>		1,917	750	404	452	486	2,798	2,694	652	442	810	1,291	4,454	2,096	2,331	21,577
<b>Total Sum of ≥ 5</b>		1,700	771	427	325	416	1,891	1,809	784	225	542	1,027	2,666	1,303	632	14,518
<b>Total</b>		<b>3,617</b>	<b>1,521</b>	<b>831</b>	<b>777</b>	<b>902</b>	<b>4,689</b>	<b>4,503</b>	<b>1,436</b>	<b>667</b>	<b>1,352</b>	<b>2,318</b>	<b>7,120</b>	<b>3,399</b>	<b>2,963</b>	<b>36,095</b>