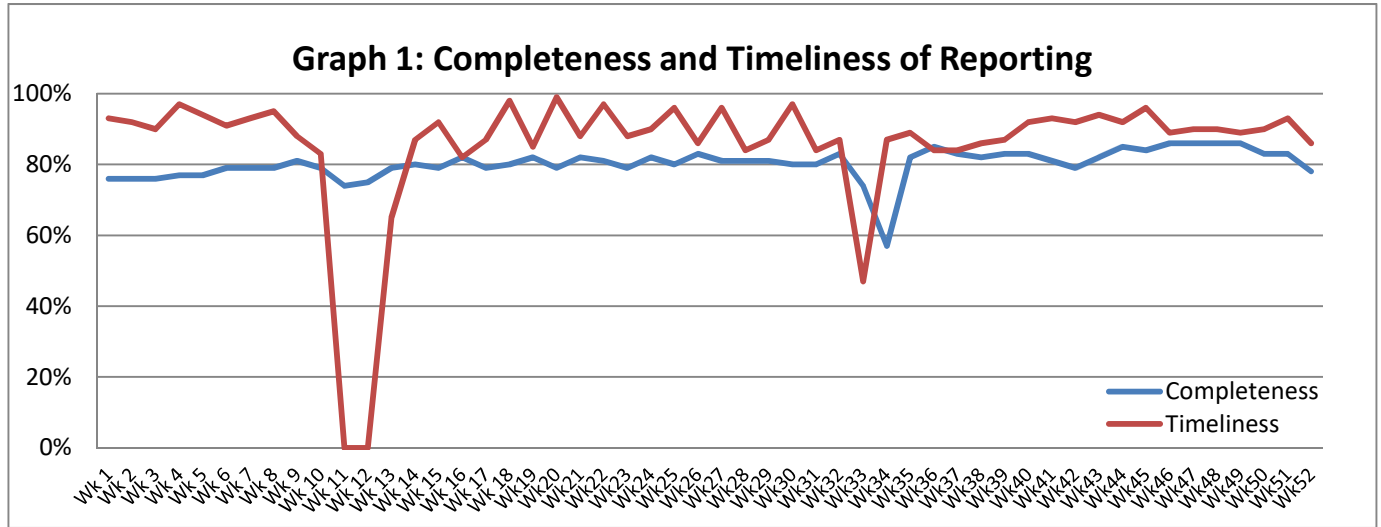


**Highlights:**

- ❖ 4 cases of acute paralysis flaccid reported this week Hama (1), Homs (1), Raqqa (1) and Swaida (1).
- ❖ Leishmaniasis increase in Deir Ezzor continues in this week with 1,732 reported cases.

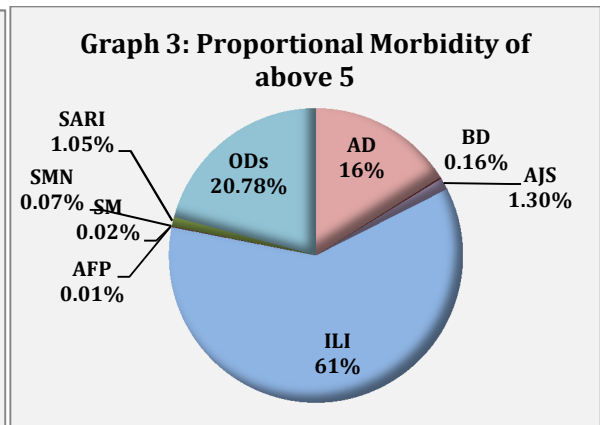
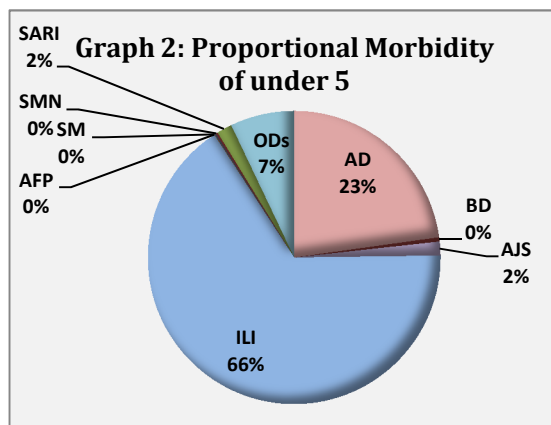
**Completeness & Timeliness of Reporting**

- ❖ The overall completeness of reporting was 78 %; (1007 out of total 1295 EWARS sentinel sites). 14 governorates have reported this week.
- ❖ Timeliness of reporting was 86%.

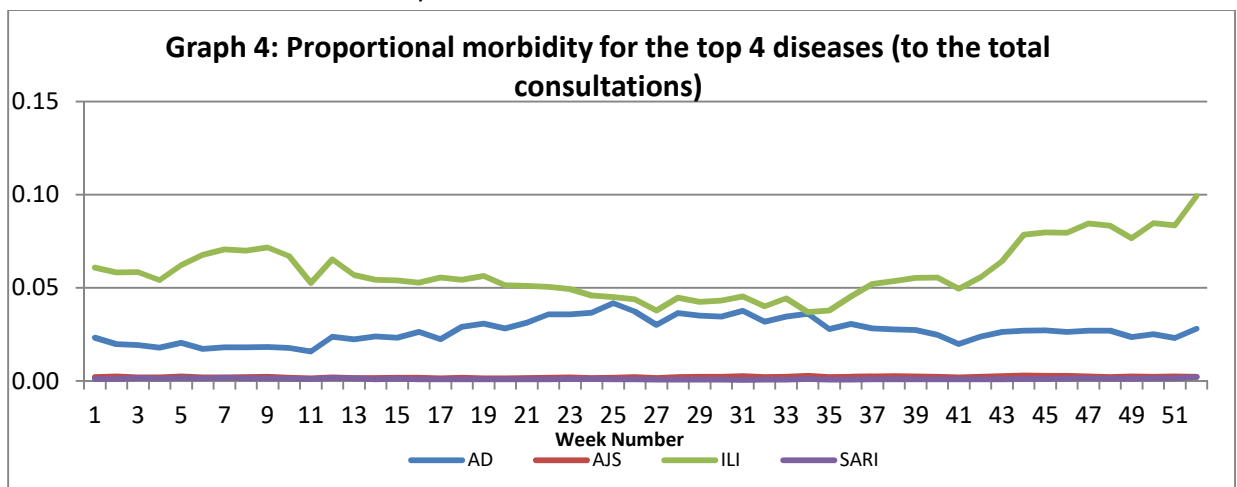


**The Morbidity Cases**

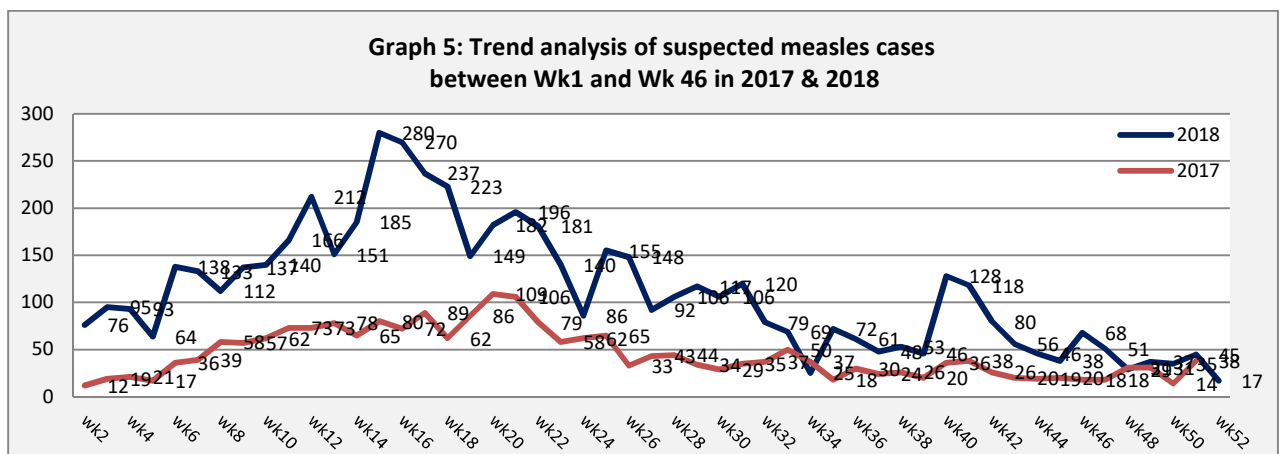
- ❖ Out of a total of 193,033 consultations, 32,952 EWARS notifiable cases were reported; of which 21,133 cases were influenza like illness (65%), 6,235 cases were acute diarrhoea (19%), 458 were acute jaundice syndrome, 437 were severe acute respiratory infection, 17 were suspected measles, 93 were bloody diarrhoea, 46 were suspected meningitis, and 4 case of acute flaccid paralysis.
- ❖ Graphs 2 and 3 below show the proportional morbidity among < 5 and ≥ 5 year age groups respectively.



- ❖ Acute diarrhoea constitutes (23%) among < 5 and (16%) among ≥ 5, while influenza-like illness constitutes (66%) of the cases among <5 and (61%) of the cases among ≥ 5 years old.
- ❖ 52% of the cases were distributed among males. 60% of the cases were distributed among ≥5 age group.
- ❖ In total 4,392 cases were reported as “other diseases”. The most important diseases reported within this group were; 2,368 cases of leishmaniasis (mostly from Deir Ezzor, Aleppo and Hassakeh), 103 cases of brucellosis, 141 cases of typhoid, 19 cases of tuberculosis, 60 pertussis, and 43 mumps.
- ❖ Graph 4: shows the trend analysis of top four diseases to total consultations. An increase of ILI is reported which is in line with the seasonality of the disease.



- ❖ Graph 5: the below graph shows the trend analysis of suspected measles cases reported through EWARS, the graph indicates to measles campaigns conducted in 2018 as response to SM increased cases.



Graph 5: the below graph shows the trend analysis of suspected Leishmaniasis cases reported through EWARS in Deir Ezzor. The graph shows significant increase in cases since week 43.

❖ Table 1 shows comparison between reported cases in week-51 and week-52 2018.

Table 1: Comparison between reported cases for week 51 and week 52 in 2018.

Disease	51	52
AD	6,691	6,235
BD	176	93
AWD	0	0
AJS	671	458
ILI	23,568	21,333
AFP	1	4
SM	45	17
SMN	55	46
SARI	412	437
TYF	216	141
PER	42	60
LSH	2030	2368
BRU	158	103
TB	23	19
SCA	582	444
LIC	669	577
CHP	178	204
MUM	55	43
Others	522	370
<b>Total</b>	<b>36094</b>	<b>32952</b>

## ❖ The Response

**Acute flaccid paralysis:** Stool samples were collected from AFP cases and sent to the reference lab in Damascus. Laboratory test for AFP cases detected in previous weeks showed negative results for Polio.

### **Leishmaniasis cases in Deir Ezzor,**

MoH activated 12 health centers in Deir Ezzor to provide treatment of cases, 80 new health workers were nominated to be recruited by DoH of Deir Ezzor and Raqqa, centers were provided with reporting formats and patients registry, DoH will deploy 2 mobile teams to provide treatment of Leishmaniasis cases in 5 locations, 2500 bed nets have been provided to DoH in Deir Ezzor and 2000 in Raqqa, 63,000 bed nets are in process of shipping and will be distributed in NES, and training for health workers will be conducted in January.

**Table-2: Distribution of cases per age group, and by Governorate-week-52, 2018:**

Code	age group	Idleb	Hassaka	Raqqa	Sweida	Qunaitra	Lattakia	Aleppo	Hama	Homs	Daraa	Damascus	DierEzor	Rural Damascus	Tartous	Grand Total
AD	< 5	589	90	121	89	55	340	285	75	45	47	412	552	332	164	3,196
	≥ 5	621	75	130	97	49	343	357	125	66	62	297	540	245	32	3,039
BD	< 5	0	16	7	3	0	0	0	0	0	2	3	0	0	1	32
	≥ 5	0	6	15	3	0	0	0	0	2	4	2	29	0	0	61
AWD	< 5	0	0	0	0	0	0	0	0	0	0	0	0	0	0	0
	≥ 5	0	0	0	0	0	0	0	0	0	0	0	0	0	0	0
AJS	< 5	25	14	33	3	9	6	22	25	10	24	26	39	11	9	256
	≥ 5	20	2	57	3	7	2	15	4	1	14	10	60	6	1	202
ILI	< 5	868	369	111	426	206	1,443	2,077	295	272	400	991	1,795	1,025	2,054	12,332
	≥ 5	941	319	129	256	294	1,400	1,342	458	125	279	619	1,435	615	789	9,001
AFP	< 5	0	0	0	1	0	0	0	0	0	0	0	0	0	0	1
	≥ 5	0	0	1	0	0	0	0	1	1	0	0	0	0	0	3
SM	< 5	1	0	2	0	0	0	0	0	0	0	0	0	0	0	3
	≥ 5	0	2	3	1	1	0	0	1	0	0	0	5	1	0	14
SMN	< 5	2	1	5	1	0	0	0	0	0	0	3	1	1	0	14
	≥ 5	1	0	9	1	0	1	2	2	0	0	2	13	0	1	32
SARI	< 5	0	12	17	17	0	2	11	36	0	0	65	36	0	17	213
	≥ 5	0	19	19	2	0	6	4	116	0	0	23	32	0	3	224
Others	< 5	349	100	47	6	45	106	411	123	38	17	25	1,963	114	9	3,353
	≥ 5	58	71	7	9	17	21	183	17	19	2	7	539	24	2	976
Total Sum of < 5		1,834	602	343	546	315	1,897	2,806	554	365	490	1,525	4,386	1,483	2,254	19,400
Total Sum of ≥ 5		1,641	494	370	372	368	1,773	1,903	724	214	361	960	2,653	891	828	13,552
Total		3,475	1,096	713	918	683	3,670	4,709	1,278	579	851	2,485	7,039	2,374	3,082	32,952