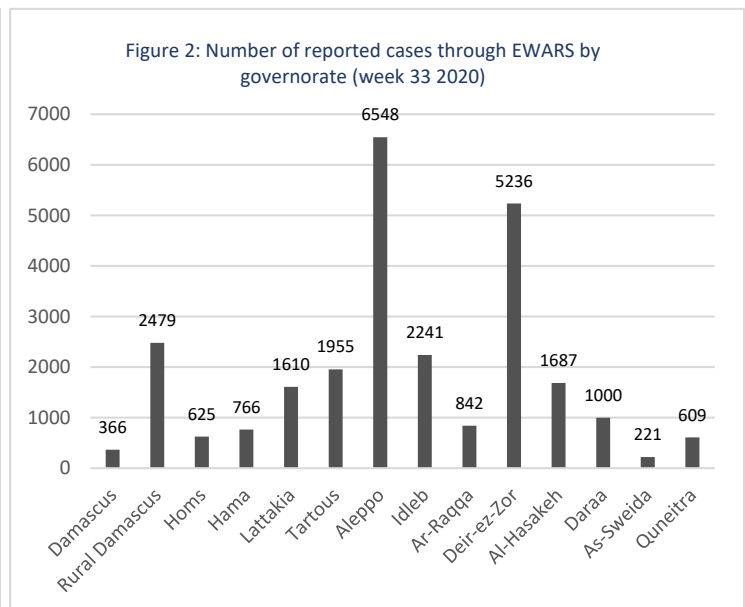
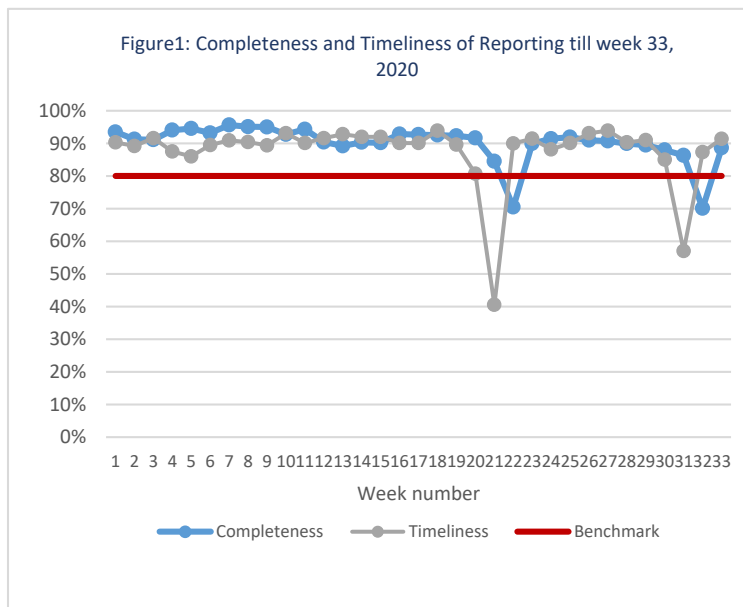


## Highlights

- A total of 208,609 consultations were recorded in all the 14 governorates in week 33.
- The leading causes of morbidity among all age groups influenza-like illnesses (49.1%) and acute diarrhoea (33.8%).
- During week 33, MoH reported 468 confirmed COVID-19 cases in Syria. COVID-19 has been included with EWARS notified diseases. and 350 suspected COVID-19 cases were reported in Aleppo and Lattakia.
- 3 acute flaccid paralysis case were reported in Aleppo, Damascus, and Tartous.
- 17 suspected measles cases were reported during week 33. the blood specimens of 9 cases were collected and tested at the reference laboratory in Damascus. The laboratory result showed all negative for measles.
- Decrease in SARI cases by 25.1% to previous week. Number of cases in week 33 was 280 SARI cases.
- Number of cases in week 33 was 8,849 AD cases

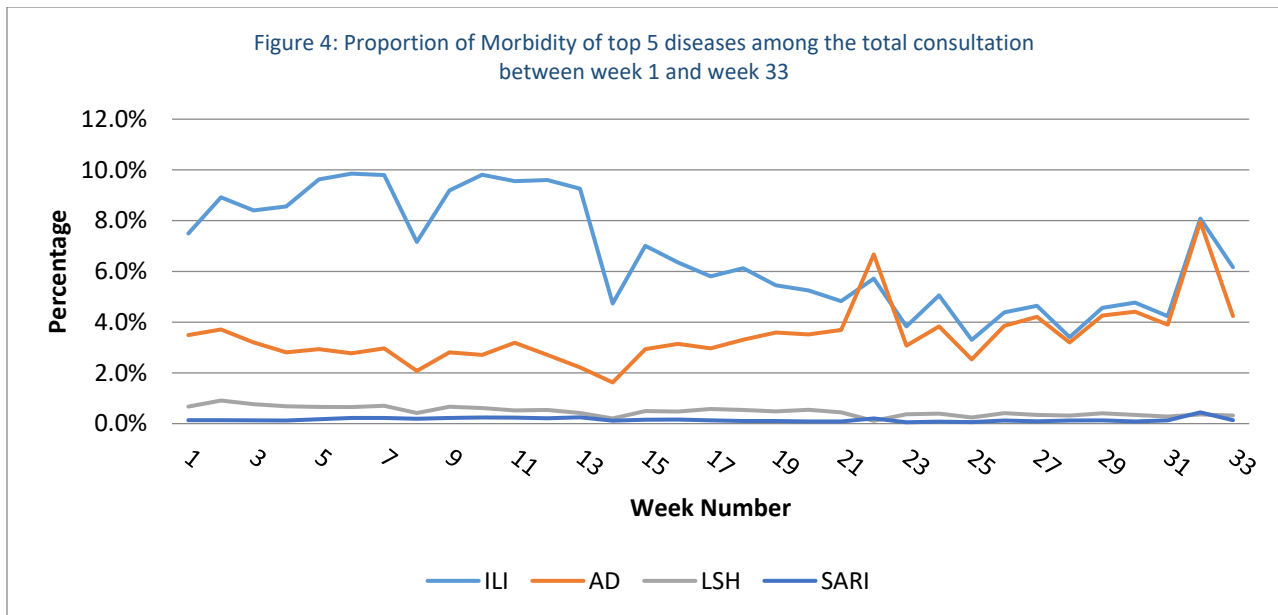
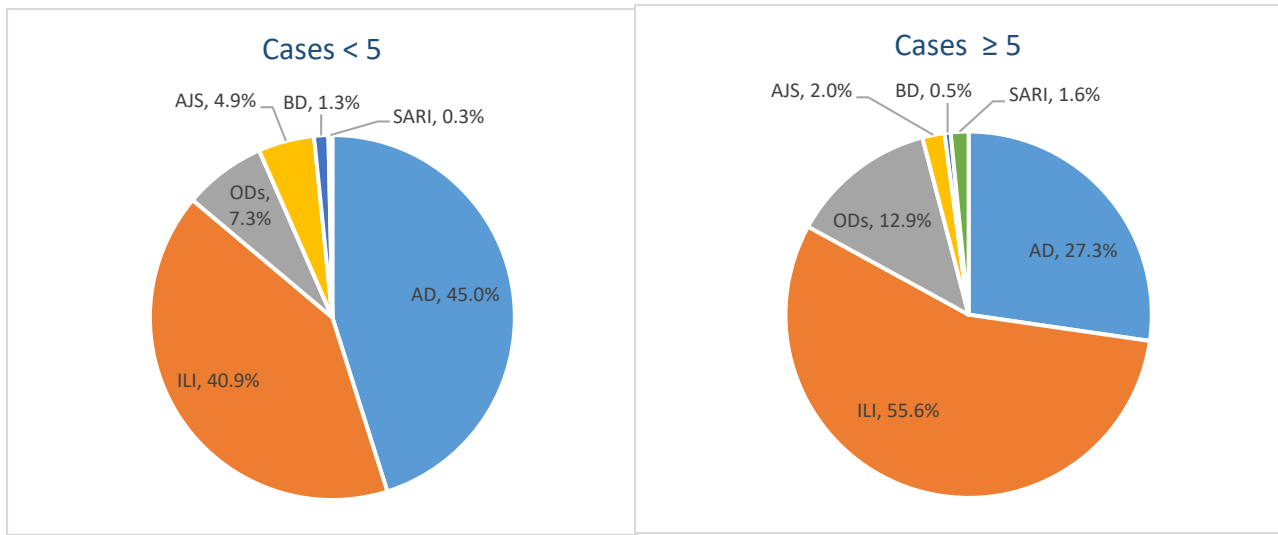
## Performance Indicators

- A total of 1,152 out of 1,300 active reporting sites (88.6%) in all 14 governorates of Syria reported through EWARS, with 91% timeliness among those sites providing data during week 33 (Figure 1).



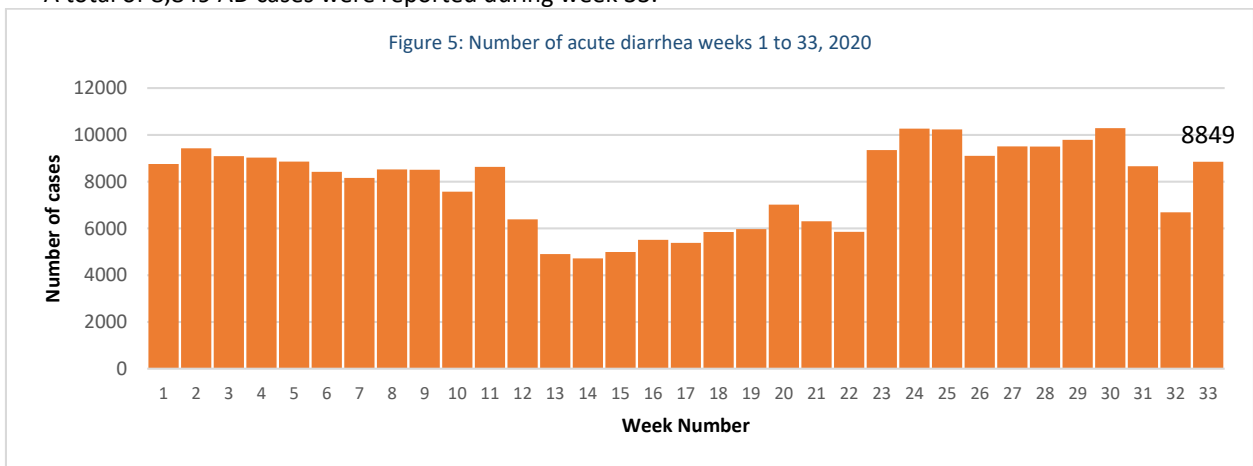
## Morbidity

- A total of 208,609 consultations were recorded in 1,300 health facilities in 14 governorates in week 33, 2020. Among them, 26,185 cases were EWARS notifiable health conditions (Figure 2).
- Among all age groups, the leading causes of morbidity influenza-like illnesses (ILI) (49.1%), and acute diarrhoea (AD) (33.8%).
- Of the 17,709 total reported cases, 50.3% (13,186) were female, and 38.9% (10,188) were children under 5 years old.
- Among children under 5 years of age, 45.0% of cases are ILI, and AD representing 40.9% of the cases during this reporting period (Figure 3).



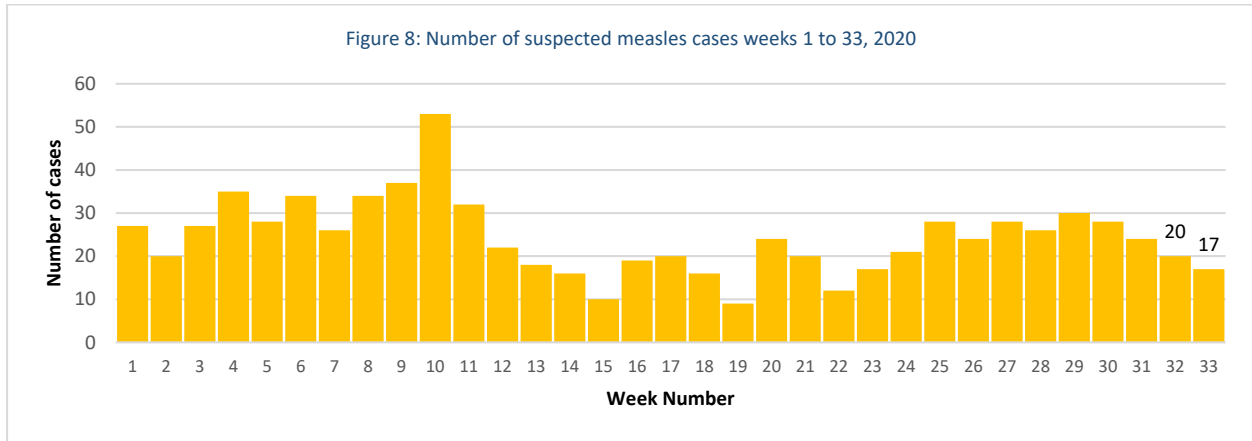
**1. Waterborne Diseases**

- There no case of acute watery diarrhea (AWD) in week 33.
- A total of 8,849 AD cases were reported during week 33.



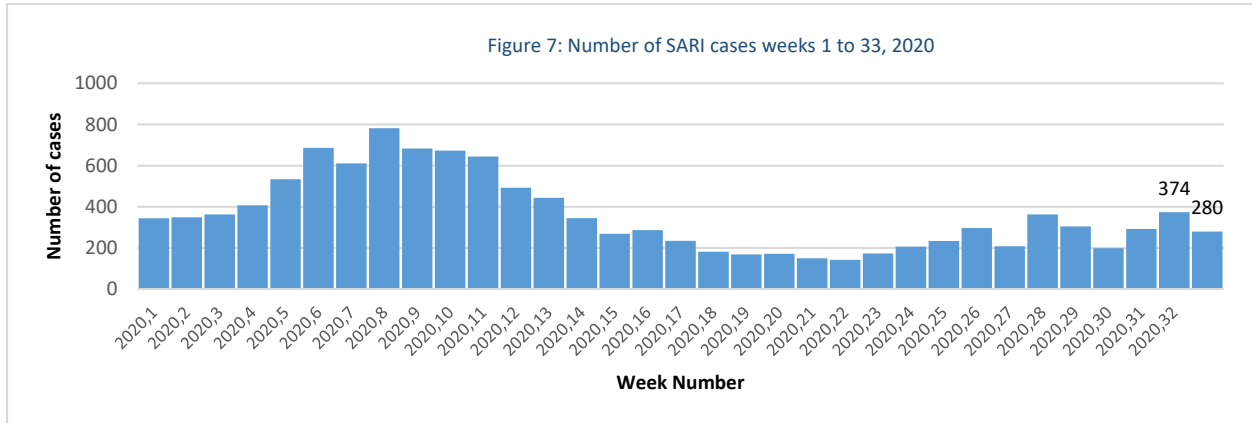
## 2. Vaccine Preventable Diseases

- 3 cases of acute flaccid paralysis (AFP) were reported in week 33
- Number of suspected measles in week 33 was (17) cases. Most cases were reported from Idleb (8), Deir-ez-Zor (6), and (3) Aleppo.



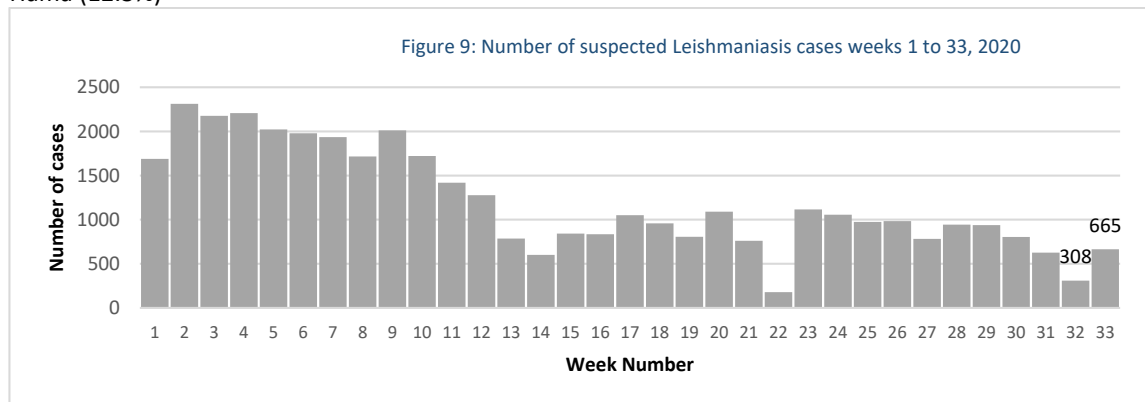
## Respiratory Diseases

- In total, 280 SARI cases were reported during week 33.
- In total, 12,866 ILI cases were reported during week 33.



## Other Diseases

- 2,766 cases were reported as “other diseases” through EWARS. The health conditions with the highest incidents were lice (805), leishmaniasis (665), and scabies (255).
- During week 33, most of suspected leishmaniasis cases were reported from Aleppo (58.3%), Idleb (15.9%), and Hama (12.3%)



### *Suspected measles*

A total of 17 suspected measles cases were reported during week 33. All the cases were investigated by rapid response teams of the health directorates expect for cases reported from Adleb due to accessibility. The blood specimens from 9 suspected cases were collected and tested for IgM ELISA at the reference laboratory in Damascus. the lab results showed negative results for measles for all cases.

### *Acute flaccid paralysis:*

The stool samples were collected and tested at the polio reference laboratory in Damascus, and the results showed the all case were negative for poliomyelitis.

### *COVID-19:*

- As of 15 of August 2020, a total of 1593 cases - in 12 governorates, Damascus 621 (39%), Rural Damascus 231 (15%), Aleppo 185 (12%), Lattakia 143 (9%), Homs 126(8%), Sweida(71(4%), Tartous(68(4%), Quneitra(62(4%), Hama 38(2%), Dar'a 29(2%), Al-Hasakeh 15(1%).
- Number of deaths related to COVID-19 is 60 in 7 governorates, CFR 3.7%.
- 105 cases (7%), are travel related cases, 203 cases (13%), are contacts of confirmed cases, and 1285 cases (81%), unidentified source of exposure.
- On 17<sup>th</sup> of August, WHO supported a meeting for the heads of communicable disease directorate, Primar Health Directorate, and Public Health laboratories. The following points were agreed during the meeting:
  - Draft the surveillance guide for COVID-19
  - Discuss the progress in developing electronic platform for COVID-19 surveillance.
  - Discuss the current situation, difficulties and challenges.

## Comparison with Previous Week by Health Condition

Disease	Week 32	Week 33
Acute diarrhea (AD)	6688	8849
Bloody diarrhea (BD)	126	212
Acute watery diarrhea (AWD)	0	0
Acute jaundice syndrome (AJS)	890	811
Influenza like illness (ILI)	6798	12866
Acute flaccid paralysis (AFP)	2	3
Suspected measles (SM)	20	17
Suspected meningitis (SMN)	39	31
Typhoid fever (TYF)	870	320
Brucellosis (BRU)	142	192
Suspected tuberculosis (TB)	1	21
Severe acute respiratory infection (SARI)	374	280
Suspected pertussis (PER)	87	19
suspected leishmaniasis (LSH)	308	665
Suspected chickenpox (CHP)	96	112
Scabies (SCA)	201	255
Lice (LIC)	644	805
Suspected mumps (MUM)	57	31
COVID-19	0	350
Others	265	346
<b>Total</b>	<b>17708</b>	<b>26185</b>

## Case Distribution by Age Group, and by Governorate

Week 33, 2020

		Idleb	Al-Hasa keh	Ar-Raqqa	As-Sweida	Quneitra	Lattakia	Aleppo	Hama	Homs	Dar'a	Damascus	Deir- ez-Zor	Rural Damascus	Tartous	Total
Acute diarrhoea (AD)	< 5	524	424	273	35	39	92	796	215	123	145	116	1497	203	103	4585
	≥ 5	505	330	165	36	54	279	659	209	106	258	99	1036	345	183	4264
Bloody diarrhoea (BD)	< 5	0	8	8	0	0	0	0	0	1	5	2	105	0	0	129
	≥ 5	0	6	11	0	0	0	0	0	0	2	0	64	0	0	83
Acute watery diarrhoea (AWD)	< 5	0	0	0	0	0	0	0	0	0	0	0	0	0	0	0
	≥ 5	0	0	0	0	0	0	0	0	0	0	0	0	0	0	0
Acute jaundice syndrome (AJS)	< 5	33	9	111	0	0	0	4	1	0	5	0	339	2	0	504
	≥ 5	26	10	54	2	2	0	5	4	2	13	0	172	5	12	307
Influenza like illness (ILI)	< 5	234	328	102	33	170	373	1033	31	92	178	57	620	602	312	4165
	≥ 5	226	486	87	82	307	514	3122	105	220	316	81	787	1073	1295	8701
Acute flaccid paralysis (AFP)	< 5	0	0	0	0	0	0	1	0	0	0	0	0	0	0	1
	≥ 5	0	0	0	0	0	0	0	0	0	0	1	0	0	1	2
Suspected measles (SM)	< 5	6	0	0	0	0	0	2	0	0	0	0	2	0	0	10
	≥ 5	2	0	0	0	0	0	1	0	0	0	0	4	0	0	7
Suspected meningitis (SMN)	< 5	5	0	3	2	0	0	0	3	0	1	0	2	1	0	17
	≥ 5	5	1	0	1	0	0	0	5	0	1	0	1	0	0	14
Severe acute respiratory infection (SARI)	< 5	0	12	0	0	0	0	0	13	0	0	0	2	0	8	35
	≥ 5	1	3	0	3	0	13	76	18	13	2	0	2	88	26	245
Typhoid fever (TYF)	< 5	34	0	2	0	0	0	2	0	1	3	0	20	1	0	63
	≥ 5	19	7	6	0	0	0	8	17	1	35	0	157	7	0	257
Brucellosis (BRU)	< 5	4	0	2	0	0	0	0	0	1	0	0	2	4	0	13
	≥ 5	4	12	5	0	2	0	22	30	12	6	4	45	37	0	179
Suspected tuberculosis (TB)	< 5	3	0	0	0	0	0	0	0	0	0	0	0	0	0	3
	≥ 5	0	1	0	0	0	0	11	0	0	0	3	0	2	1	18
Suspected pertussis (PER)	< 5	3	0	0	0	0	0	1	0	0	0	0	8	0	0	12
	≥ 5	7	0	0	0	0	0	0	0	0	0	0	0	0	0	7
suspected leishmaniasis (LSH)	< 5	46	3	0	0	0	0	85	3	0	0	0	20	1	0	158
	≥ 5	60	2	3	0	0	5	303	79	9	0	0	33	3	10	507
Suspected chickenpox (CHP)	< 5	18	0	5	0	0	2	2	1	1	0	0	8	2	0	39
	≥ 5	25	2	4	0	4	7	4	0	1	0	0	20	6	0	73
Scabies (SCA)	< 5	33	3	0	0	0	0	7	0	4	0	0	58	0	1	106
	≥ 5	56	4	0	1	4	5	16	3	7	2	1	47	1	2	149

Lice (LIC)	< 5	149	5	0	2	2	32	14	2	0	0	0	39	0	0	245
	≥ 5	196	8	0	2	8	246	34	23	4	0	0	35	3	1	560
Suspected mumps (MUM)	< 5	0	1	0	0	0	0	2	0	1	0	0	4	0	0	8
	≥ 5	17	2	1	0	0	0	1	0	0	0	2	0	0	0	23
COVID-19	< 5	0	0	0	0	0	0	0	0	0	0	0	0	0	0	0
	≥ 5	0	0	0	0	0	37	313	0	0	0	0	0	0	0	350
Others	< 5	0	8	0	0	3	2	1	1	7	4	0	69	0	0	95
	≥ 5	0	12	0	22	14	3	23	3	19	24	0	38	93	0	251
Total of < 5		1092	801	506	72	214	501	1950	270	231	341	175	2795	816	424	10188
Total of ≥ 5		1149	886	336	149	395	1109	4598	496	394	659	191	2441	1663	1531	15997
Grand total		2241	1687	842	221	609	1610	6548	766	625	1000	366	5236	2479	1955	26185