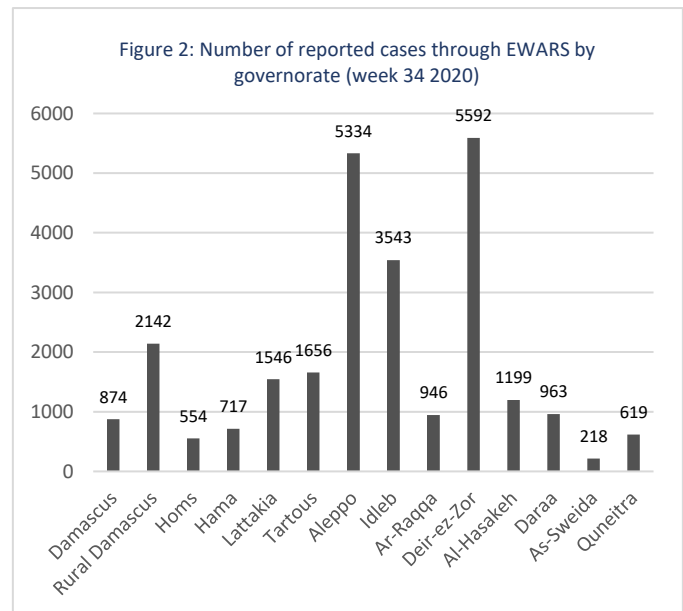
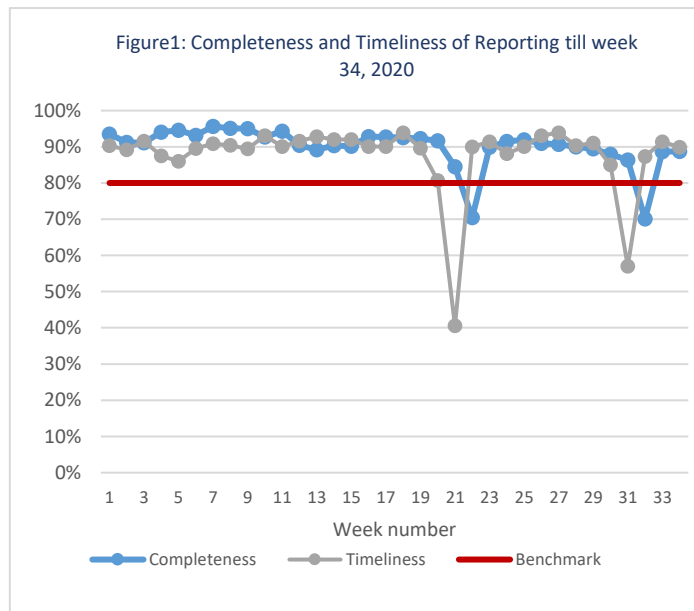


Highlights

- A total of 227,181 consultations were recorded in all the 14 governorates in week 34.
- The leading causes of morbidity among all age groups influenza-like illnesses (45.5%) and acute diarrhea (35.5%).
- During week 34, MoH reported 550 confirmed COVID-19 cases in Syria including 25 deceased cases. COVID-19 has been included with EWARS notified diseases. total number of 538 suspected COVID-19 cases were reported through EWARS system in week 34.
- 4 acute flaccid paralysis case were reported in Hama (2) cases, Aleppo (1), and Damascus (1).
- 11 suspected measles cases were reported during week 34. the blood specimens of 7 cases were collected and tested at the reference laboratory in Damascus. The laboratory result showed all negative for measles.
- Increase in SARI cases by 33.9% to previous week. Number of cases in week 34 was 357 SARI cases.

Performance Indicators

- A total of 1,153 out of 1,300 active reporting sites (88.7%) in all 14 governorates of Syria reported through EWARS, with 90% timeliness among those sites providing data during week 34 (Figure 1)



Morbidity

- A total of 227,181 consultations were recorded in 1,300 health facilities in 14 governorates in week 34, 2020. Among them, 25,903 cases were EWARS notifiable health conditions (Figure 2).
- Among all age groups, the leading causes of morbidity influenza-like illnesses (ILI) (45.5%), and acute diarrhea (AD) (35.5%).
- Of the 17,709 total reported cases, 49.9% (12,928) were female, and 40.8% (10,594) were children under 5 years old.

- Among children under 5 years of age, 45.2% of cases are ILI, and AD representing 39.0% of the cases during this reporting period (Figure 3)

Figure 3: Proportional morbidity by age group in week 33, 2020

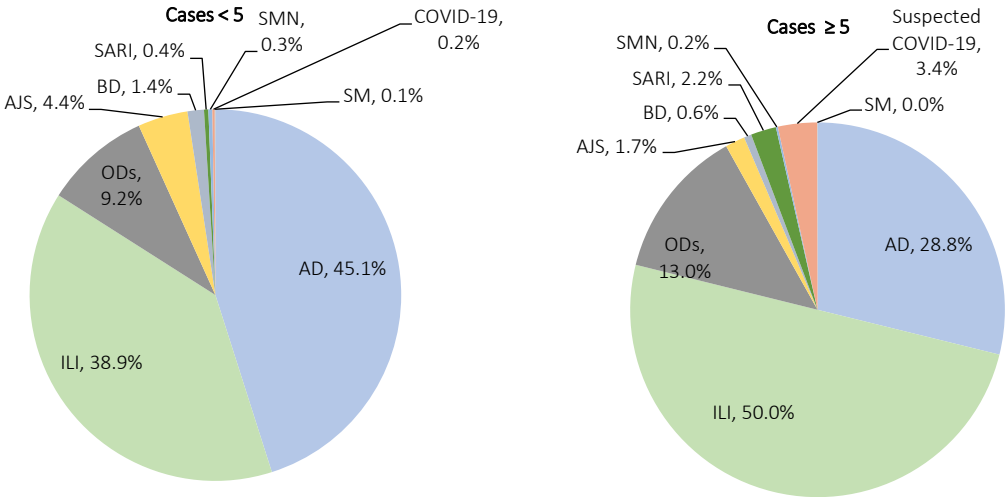
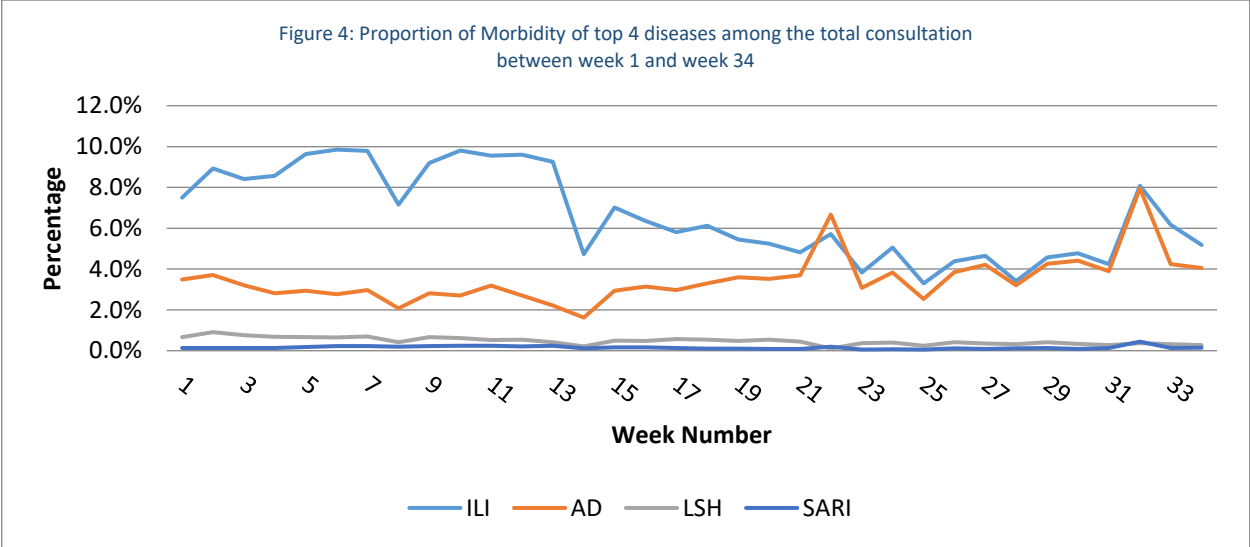
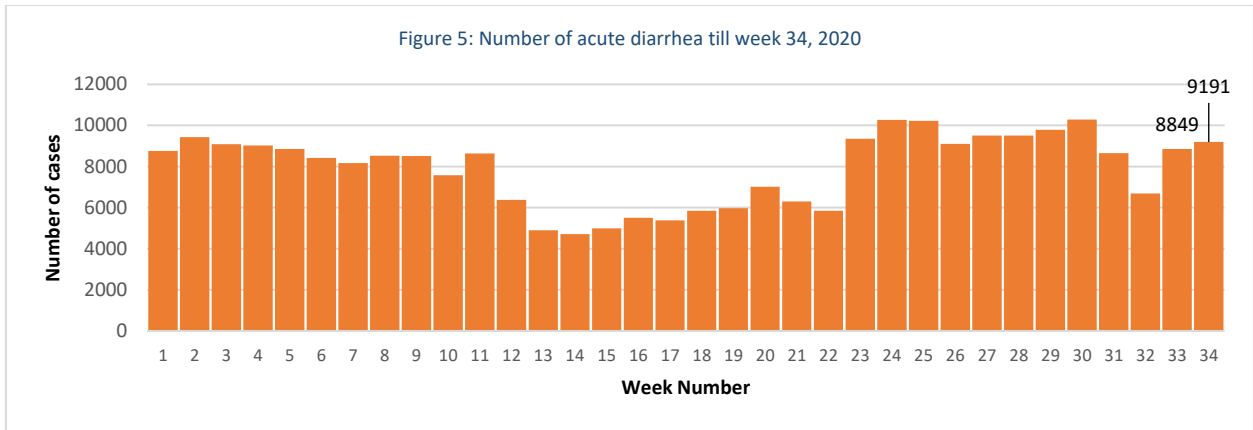


Figure 4: Proportion of Morbidity of top 4 diseases among the total consultation between week 1 and week 34



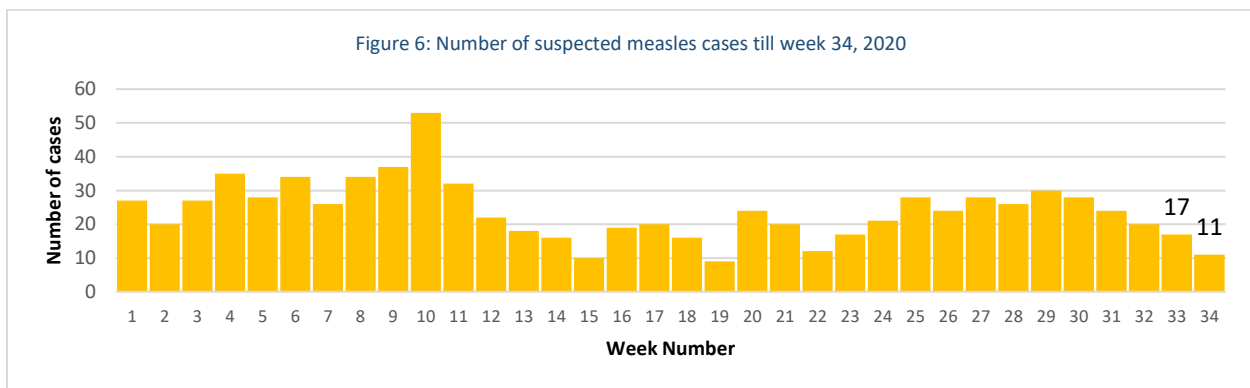
1. Waterborne Diseases

- There is no case of acute watery diarrhea (AWD) in week 34.
- A total of 9,191 AD cases were reported during week 34.



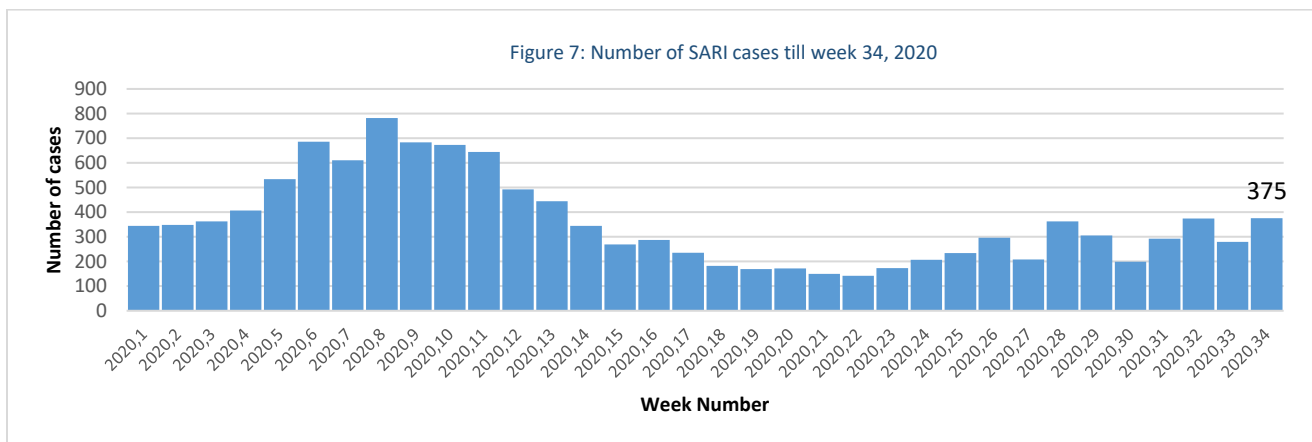
2. Vaccine Preventable Diseases

- 4 cases of acute flaccid paralysis (AFP) were reported in week 34
- Number of suspected measles in week 34 was (11) cases. Most cases were reported from Idleb (6), and Deir-ez-Zor (3)



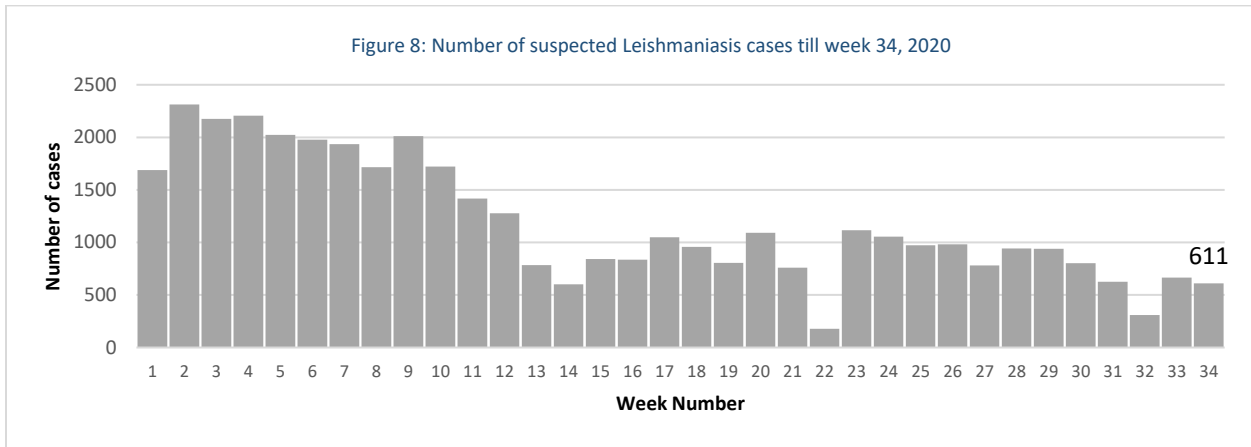
3. Respiratory Diseases

- In total, 375 SARI cases were reported during week 34, number of SARI cases increased by 33.9% to previous week
- In total, 11,780 ILI cases were reported during week 34.



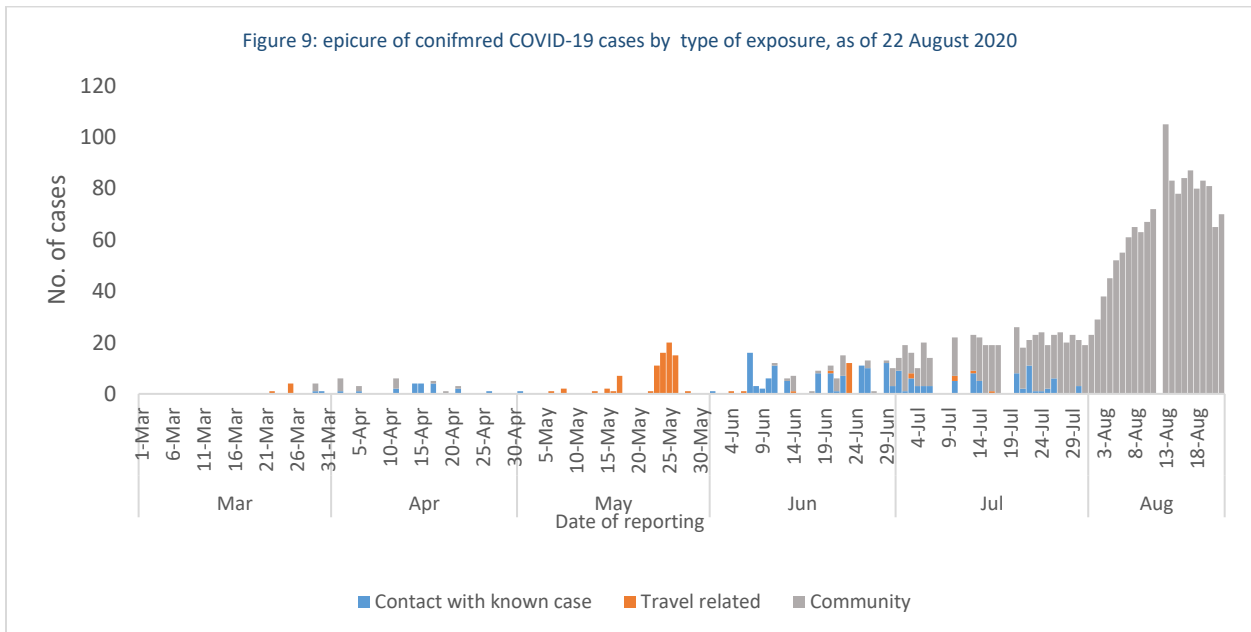
4. Other Diseases

- 2,971 cases were reported as “other diseases” through EWARS. The health conditions with the highest incidents were lice (1,040), leishmaniasis (611), and scabies (294).
- During week 33, most of suspected leishmaniasis cases were reported from Aleppo (51.1%), Idleb (24.2%), and Hama (11.6%)



Covid-19

- As of 22 August 2020, a total of 2143 cases - in 12 governorates, Damascus 772 (36%), Aleppo 305 (14%), Rural Damascus 261 (12%), Lattakia 247 (12%), Homs 172 (8%), Tartous 86 (4%), As-Sweida 85 (4%), Hama 72 (3%), Quneitra 63 (3%), Dar'a 50 (2%), Al-Hasakeh 26 (1.2%), Deir-ez-Zor 4 (0.5%),
- Number of deaths related to COVID-19 is 84 in 7 governorates, CFR 3.9%
- 105 cases (5%) are travel related cases, 203 cases (9%) are contacts of confirmed cases, and 1835 cases (86%) - unidentified source of exposure.



Public Health Response Actions

COVID-19

- The transmission of COVID-19 in Syria is classified as community transmission in all governorates. The limited capacity of PCR testing in Syria prevents the detection of mild and moderate cases in the community. Accordingly, the actual number of COVID-19 cases in Syria is expected to far exceed the reported number.
- On the 17th of August, the Ministry of Health has endorsed and disseminated the updated case definition of COVID-19. The new case definition is more sensitive and aiming to broaden the scope for detection COVID-19 cases. Moreover, COVID-19 suspected was also included to priority diseases reported in EWARS system.
- On 17 August, WHO supported a meeting between heads of the directorates of communicable disease, primary health care, and public health laboratories, in addition to WHO. the aim of the meeting was to review the current epidemiological situation of COVID 19 in Syria, and discuss the challenges related to laboratory testing of COVID-19 suspected cases, in addition to discussion and review of the first draft of COVID-19 surveillance guideline and reporting tools.

Suspected measles

A total of 11 suspected measles cases were reported during week 34. All the cases were investigated by rapid response teams of the health directorates expect for cases reported from Adleb due to accessibility. The blood specimens from 5 suspected cases were collected and tested for IgM ELISA at the reference laboratory in Damascus. the lab results showed negative results for measles for all cases.

Acute flaccid paralysis:

The stool samples were collected and tested at the polio reference laboratory in Damascus, and the results showed the all case were negative for poliomyelitis.

Public Comparison with the Previous Week by Health Condition

Disease	Week 33	Week 34
Acute diarrhea (AD)	8849	9191
Bloody diarrhea (BD)	212	250
Acute watery diarrhea (AWD)	0	0
Acute jaundice syndrome (AJS)	811	721
Influenza like illness (ILI)	12866	11780
Acute flaccid paralysis (AFP)	3	4
Suspected measles (SM)	17	11
Suspected meningitis (SMN)	31	62
Typhoid fever (TYF)	320	331
Brucellosis (BRU)	192	199
Suspected tuberculosis (TB)	21	17
Severe acute respiratory infection (SARI)	280	375
Suspected pertussis (PER)	19	48
suspected leishmaniasis (LSH)	665	611

Suspected chickenpox (CHP)	112	149
Scabies (SCA)	255	294
Lice (LIC)	805	1040
Suspected mumps (MUM)	31	72
COVID-19	350	538
Others	346	210
Total	26185	25903

Case Distribution by Age Group, and by Governorate

Week 34, 2020

		Idleb	Al-Hasa keh	Ar-Raqq a	As-Swei da	Qune itra	Latta kia	Alep po	Ham a	Homs	Dar'a	Dam ascus	Deir- ez- Zor	Rural Dam ascus	Tarto us	Total
Acute diarrhea (AD)	<5	821	347	245	41	58	91	726	209	100	105	57	1652	204	120	4776
	≥5	776	214	163	53	51	197	643	182	95	271	103	1178	290	199	4415
Bloody diarrhea (BD)	<5	0	6	5	0	0	0	0	0	1	2	0	136	1	0	151
	≥5	0	2	4	0	0	0	1	0	0	6	0	86	0	0	99
Acute watery diarrhea (AWD)	<5	0	0	0	0	0	0	0	0	0	0	0	0	0	0	0
	≥5	0	0	0	0	0	0	0	0	0	0	0	0	0	0	0
Acute jaundice syndrome (AJS)	<5	41	4	106	0	1	0	6	0	2	1	0	299	1	0	461
	≥5	29	14	57	1	1	1	2	12	3	9	1	115	7	8	260
Influenza like illness (ILI)	<5	396	218	136	22	166	430	861	22	68	166	3	768	587	282	4125
	≥5	339	301	182	57	264	449	2433	94	105	293	443	753	944	998	7655
Acute flaccid paralysis (AFP)	<5	0	0	0	0	0	0	0	0	0	0	0	0	0	0	0
	≥5	0	0	0	0	0	0	1	2	0	0	1	0	0	0	4
Suspecte d measles (SM)	<5	2	0	0	0	0	1	1	0	0	0	0	2	0	0	6
	≥5	4	0	0	0	0	0	0	0	0	0	0	1	0	0	5
Suspecte d meningiti s (SMN)	<5	8	0	10	0	0	0	1	9	2	0	0	6	0	0	36
	≥5	11	0	8	0	0	1	0	3	1	0	0	2	0	0	26
Severe acute respirator y infection (SARI)	<5	0	13	0	0	0	0	1	15	0	0	1	3	0	7	40
	≥5	1	5	0	2	0	41	15	50	80	2	127	2	0	10	335
Typhoid fever (TYF)	<5	47	0	0	0	0	0	1	0	1	1	0	26	1	0	77
	≥5	38	0	7	0	1	0	6	7	1	36	0	151	6	1	254
Brucellosi s (BRU)	<5	11	0	0	0	0	0	0	0	0	0	0	2	3	0	16
	≥5	10	7	13	0	6	3	8	25	15	14	5	55	22	0	183
Suspecte d	<5	0	0	0	0	0	0	0	0	0	0	0	0	1	0	1
	≥5	0	0	0	1	0	0	6	0	0	2	1	0	5	1	16

tuberculosis (TB)																
Suspected pertussis (PER)	< 5	9	0	1	0	0	0	0	0	0	0	0	23	0	0	33
	≥ 5	14	0	0	0	0	0	0	0	0	0	0	1	0	0	15
suspected leishmaniasis (LSH)	< 5	54	0	0	0	0	0	63	7	0	0	2	40	0	0	166
	≥ 5	94	2	2	0	11	10	249	34	9	0	0	31	1	2	445
Suspected chickenpox (CHP)	< 5	40	10	2	0	0	2	4	0	1	0	0	12	3	0	74
	≥ 5	41	7	1	0	2	0	3	0	14	1	1	1	4	0	75
Scabies (SCA)	< 5	51	5	0	0	0	0	2	1	2	6	0	48	0	1	116
	≥ 5	87	8	0	1	0	2	31	8	12	2	0	23	3	1	178
Lice (LIC)	< 5	246	4	0	2	10	27	13	8	0	0	0	42	0	0	352
	≥ 5	334	2	0	1	16	259	30	17	2	0	1	18	8	0	688
Suspected mumps (MUM)	< 5	0	2	3	0	0	0	2	0	0	0	0	19	0	0	26
	≥ 5	35	2	1	0	0	0	0	2	1	1	0	4	0	0	46
COVID-19	< 5	0	0	0	0	0	0	4	0	0	0	18	0	0	0	22
	≥ 5	4	7	0	37	28	24	213	4	20	0	108	0	45	26	516
Others	< 5	0	5	0	0	0	3	5	3	8	24	0	67	1	0	116
	≥ 5	0	14	0	0	4	5	3	3	11	21	2	26	5	0	94
Total of < 5		1726	614	508	65	235	554	1690	274	185	305	81	3145	802	410	10594
Total of ≥ 5		1817	585	438	153	384	992	3644	443	369	658	793	2447	1340	1246	15309
Grand total		3543	1199	946	218	619	1546	5334	717	554	963	874	5592	2142	1656	25903