

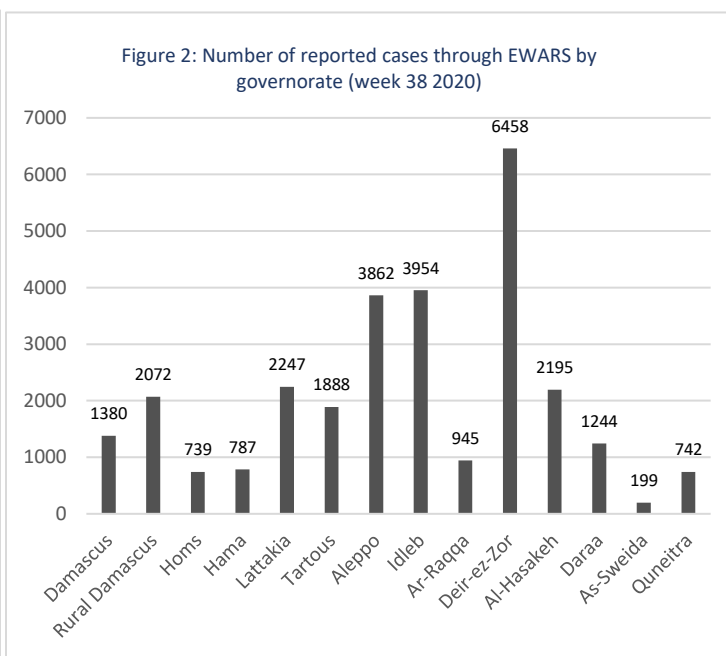
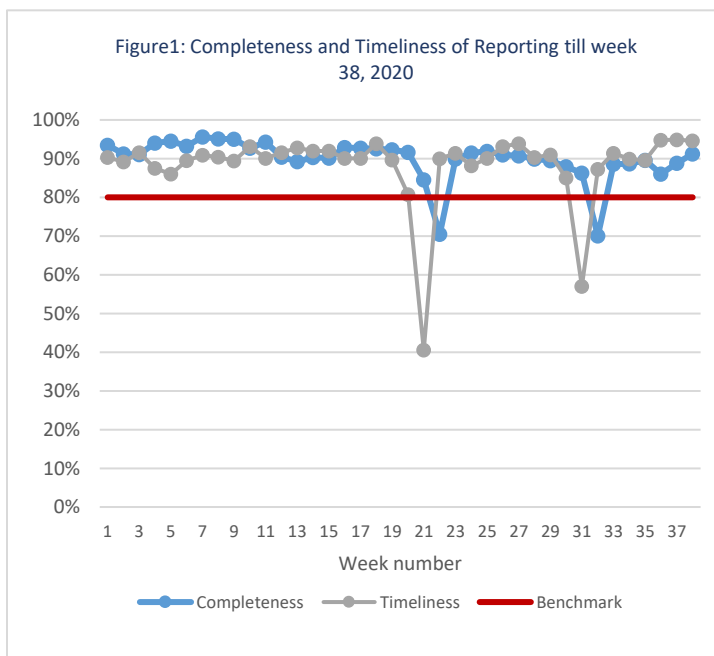


Highlights

- A total of 216,461 consultations were recorded in all the 14 governorates in week 38.
- The leading causes of morbidity among all age groups influenza-like illnesses (42.9%) and acute diarrhea (36.8%).
- 524 suspected COVID-19 were reported through EWARS system in week 38. The cases increased by 11.4% to previous week. Most of cases reported in Homs 98 (18.7%), Idleb 87 (16.6%), and Rural Damascus 69 (13.2%).
- 3 acute flaccid paralysis case were reported.
- 20 suspected measles cases were reported during week 38. the blood specimens of 11 cases were collected and tested at the reference laboratory in Damascus. The laboratory result showed all negative for measles.
- Decrease in SARI cases by 1.8% to previous week. Number of cases in week 38 was 166 SARI cases.

Performance Indicators

- A total of 1,187 out of 1,301 active reporting sites (91%) in all 14 governorates of Syria reported through EWARS, with 95% timeliness among those sites providing data during week 38 (Figure 1).

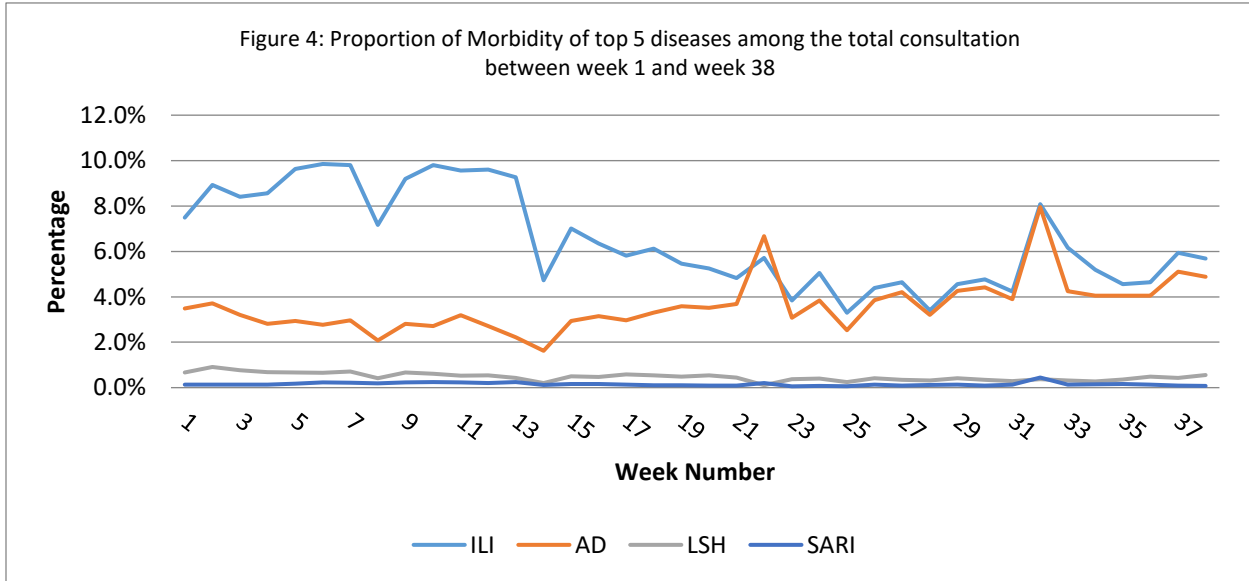
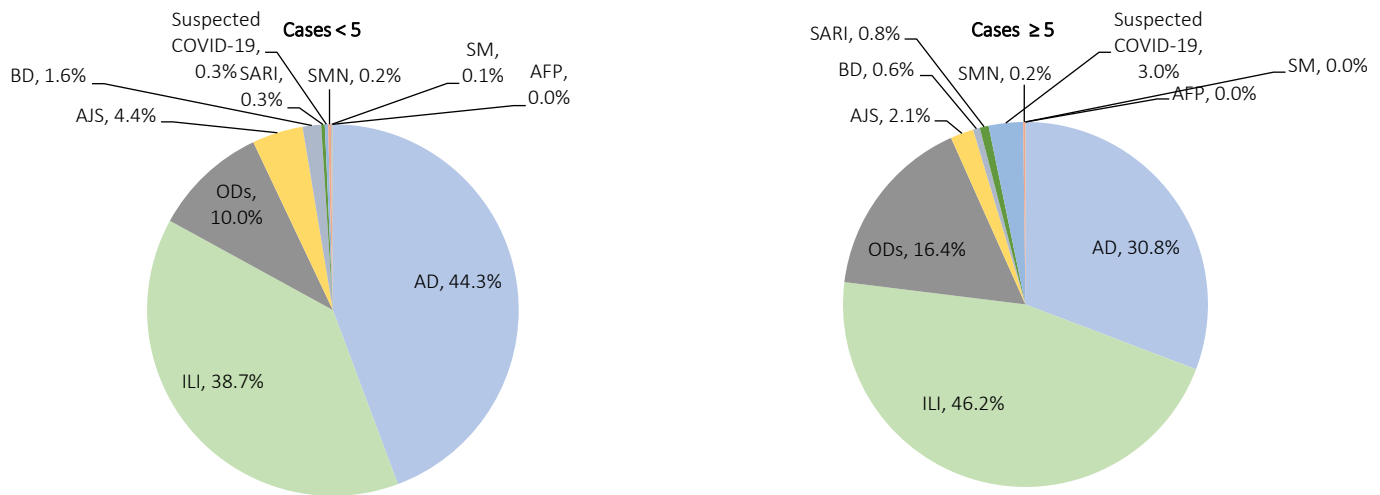


Morbidity

- A total of 216,461 consultations were recorded in 1,301 health facilities in 14 governorates in week 38, 2020. Among them, 28,712 cases were EWARS notifiable health conditions (Figure 2).

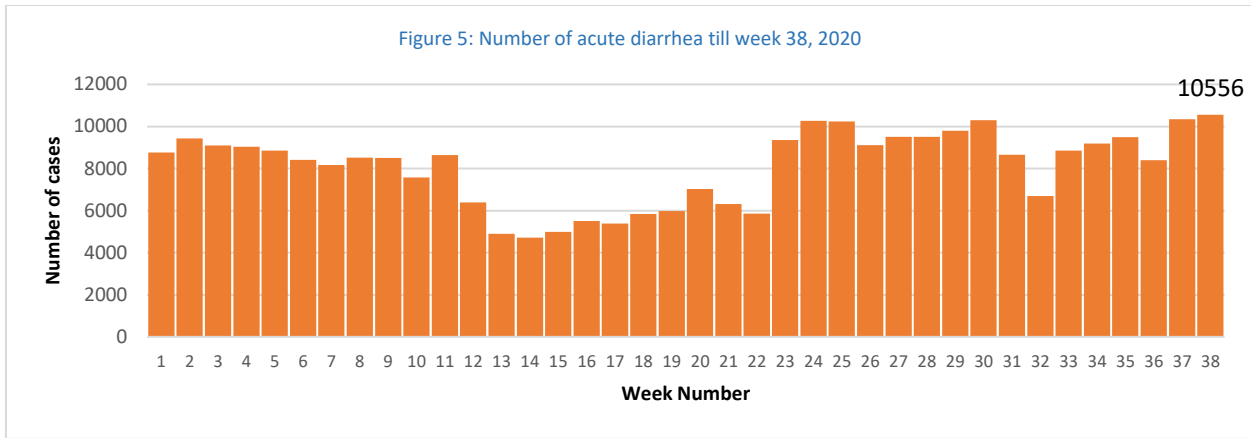
- Among all age groups, the leading causes of morbidity influenza-like illnesses (ILI) (42.9%), and acute diarrhea (AD) (36.8%).
- Of the 28,712 total reported cases, 51.1% (14,408) were female, and 44.2% (12,695) were children under 5 years old.
- Among children under 5 years of age, 38.7% of cases are ILI, and AD representing 44.3% of the cases during this reporting period (Figure 3).
- 524 suspected COVID-19 cases registered with 36 among children under 5 years of age, and 488 (3.1%) among cases equal or older than 5 years old.

Figure 3: propositional morbidity by age group in week 38, 2020



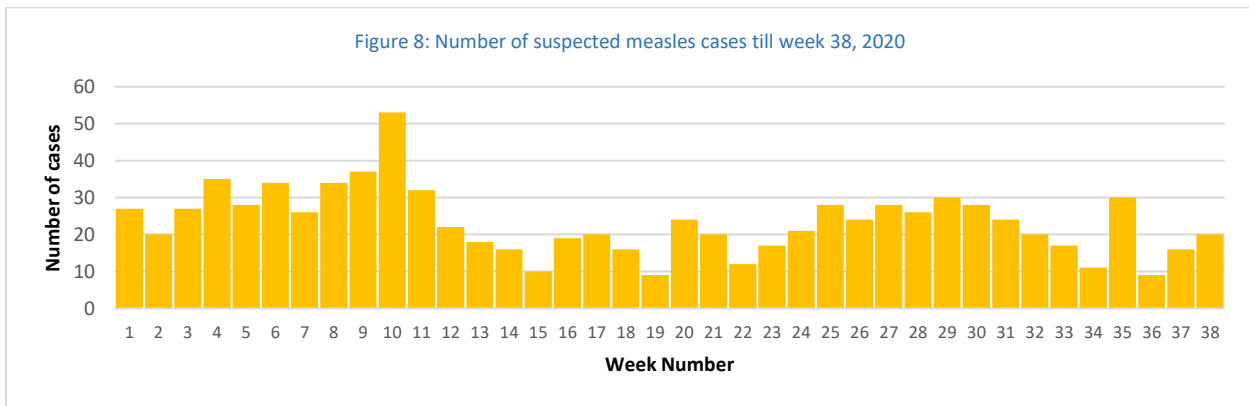
1. Waterborne Diseases

- 0 cases of acute watery diarrhea (AWD) in week 38.
- A total of 10,556 AD cases were reported during week 38.



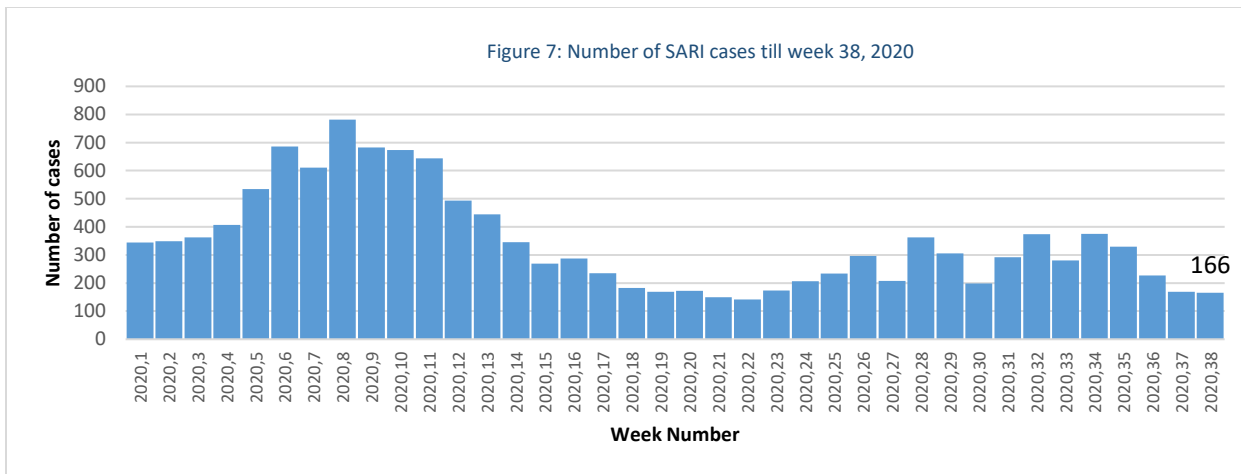
2. Vaccine Preventable Diseases

- 3 cases of acute flaccid paralysis (AFP) were reported in week 38, in Hama, Damascus, and Deir-ez-Zor
- Number of suspected measles in week 38 was (20) cases. Most cases were reported from Idleb (9), and Deir-ez-Zor (4)



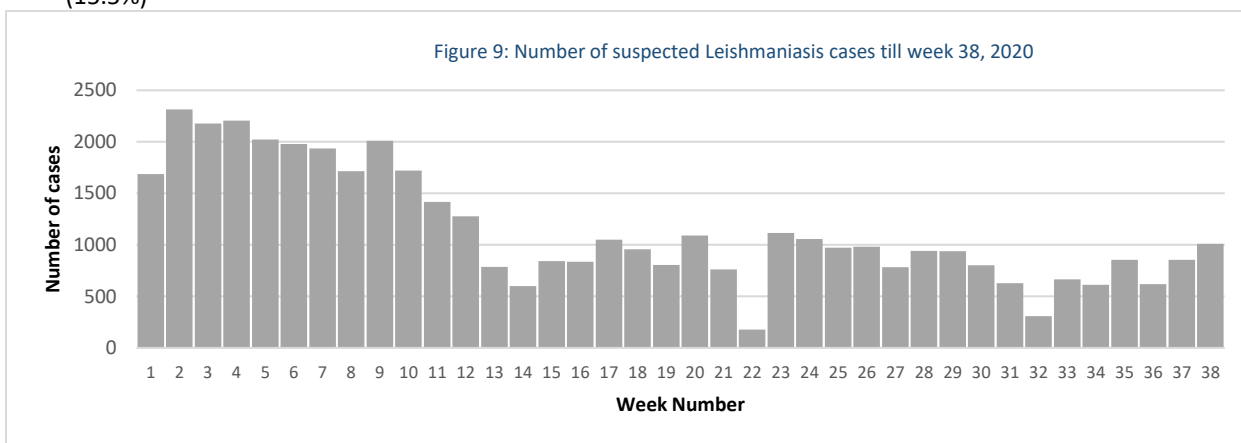
Respiratory Diseases

- In total, 166 SARI cases were reported during week 38.
- In total, 12,304 ILI cases were reported during week 38.



Other Diseases

- 3,887 cases were reported as “other diseases” through EWARS. The health conditions with the highest incidents were lice (1,196), leishmaniasis (1,011), and scabies (377).
- During week 38, most of suspected leishmaniasis cases were reported from Aleppo (36.0%), Deir-ez-Zor (33.0%), and Idlib (15.5%)

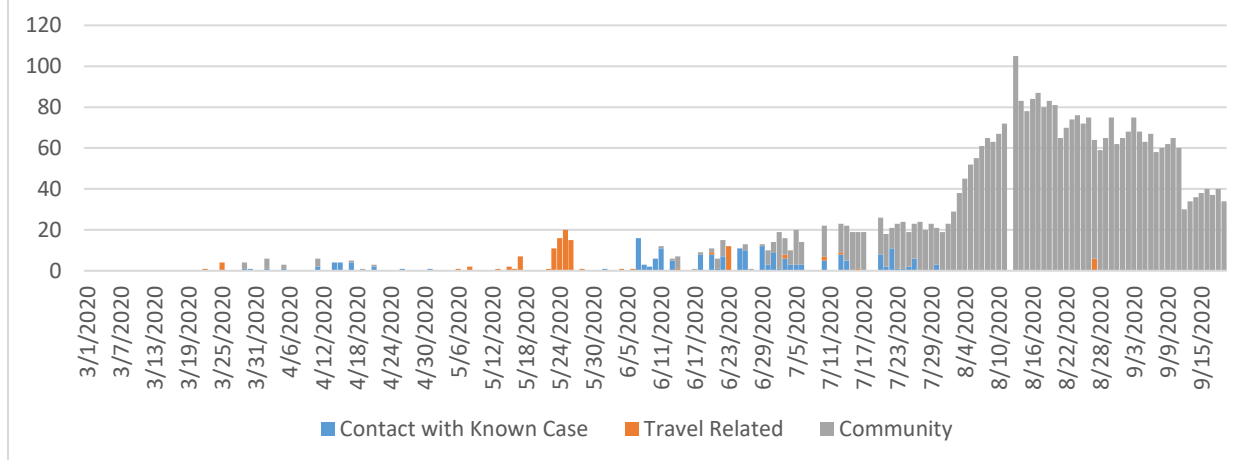


COVID-19

During the week 38 MoH reported 259 confirmed COVID-19 cases in Syria including 18 deceased cases through the COVID-19 surveillance. As of 19 September, 3765 cases reported in 13 governorates. cases distributed as follows: 1328 (35.3%) in Damascus, 873 (23.2%) in Aleppo, 410 (10.9%) in Lattakia, 317 (8.4%) in Rural Damascus, 270 (7.2%) in Homs, 139 (3.7%) in Hama, 130 (3.5%) in As-Sweida, 104 (2.8%) in Tartous, 76 (2%) in Quneitra, 76 (2%) in Dar'a, 26 (0.7%) in Al-Hasakeh, 13 (0.4%) in Deir-ez-Zor, and 3 (0.1%) in Ar-Raqqa.

Number of deaths related to COVID-19 is 170 in 11 governorates, CFR 4.5%. 111 cases (2.9%) are travel related cases, 203 cases (5.4%) are contacts of confirmed cases, and 3451 cases (91.7%) are community. (Figure 10).

Figure 10: epi curve for COVID-19 confirmed cases by type of exposure, 12 September 2020



Public Health Response Actions

COVID-19

- WHO continues to provide needed support for the Rapid response teams to undertake investigation and response of COVID-19 alerts by facilitating the transportation of RRTs, samples collection and transporting to designated laboratory in 4 governorates. During the reporting period than 1081 suspected COVID-19 cases and contacts were investigated properly within 24 hours during the reporting period.
- WHO efforts are still going on to support MoH to early detection of suspected COVID-19 cases admitted to hospitals through supporting active surveillance visits to 125 hospitals in 13 governorates.

Suspected measles

A total of 20 suspected measles cases were reported during week 38. All the cases were investigated by rapid response teams of the health directorates expect for cases reported from Adleb due to accessibility. The blood specimens from 11 suspected cases were collected and tested for IgM ELISA at the reference laboratory in Damascus. the lab results showed negative results for measles for all cases.

Acute flaccid paralysis:

The stool samples were collected and tested at the polio reference laboratory in Damascus, and the results showed the all cases were negative for poliomyelitis.

Comparison with Previous Week by Health Condition

Disease	Week 37	Week 38
Acute diarrhea (AD)	10346	10556
Bloody diarrhea (BD)	300	300
Acute watery diarrhea (AWD)	0	0
Acute jaundice syndrome (AJS)	971	891
Influenza like illness (ILI)	12051	12304
Acute flaccid paralysis (AFP)	5	3
Suspected measles (SM)	16	20
Suspected meningitis (SMN)	62	61
Typhoid fever (TYF)	406	416
Brucellosis (BRU)	248	212
Suspected tuberculosis (TB)	15	21
Severe acute respiratory infection (SARI)	169	166
Suspected pertussis (PER)	43	65

suspected leishmaniasis (LSH)	855	1011
Suspected chickenpox (CHP)	120	134
Scabies (SCA)	334	377
Lice (LIC)	1101	1196
Suspected mumps (MUM)	77	86
COVID-19	470	524
Others	214	369
Total	27803	28712

Case Distribution by Age Group, and by Governorate

Week 38, 2020

		Idleb	Al-Hasakeh	Ar-Raqqah	As-Sweida	Quneitra	Lattakia	Aleppo	Hama	Homs	Dar'a	Damascus	Deir-ez-Zor	Rural Damascus	Tartous	Total
Acute diarrhea (AD)	< 5	854	604	257	37	98	294	686	219	140	175	205	1671	219	166	5625
	≥ 5	847	438	149	31	64	351	442	207	90	321	276	1165	268	282	4931
Bloody diarrhea (BD)	< 5	0	5	2	0	0	5	0	0	2	6	2	181	0	1	204
	≥ 5	0	3	5	0	0	2	3	0	0	2	2	79	0	0	96
Acute watery diarrhea (AWD)	< 5	0	0	0	0	0	0	0	0	0	0	0	0	0	0	0
	≥ 5	0	0	0	0	0	0	0	0	0	0	0	0	0	0	0
Acute jaundice syndrome (AJS)	< 5	54	4	90	0	1	7	7	0	6	2	2	383	1	5	562
	≥ 5	38	16	61	2	2	6	7	10	7	11	13	143	8	5	329

Influenza like illness (ILI)	< 5	417	419	172	25	283	609	736	45	82	185	143	925	507	361	4909
	≥ 5	431	506	174	71	220	609	1391	117	176	350	613	812	895	1030	7395
Acute flaccid paralysis (AFP)	< 5	0	0	0	0	0	0	0	1	0	0	0	1	0	0	2
	≥ 5	0	0	0	0	0	0	0	0	0	0	1	0	0	0	1
Suspected measles (SM)	< 5	9	1	0	1	0	0	1	0	0	1	0	3	3	0	19
	≥ 5	0	0	0	0	0	0	0	0	0	0	0	1	0	0	1
Suspected meningitis (SMN)	< 5	2	0	3	0	0	0	0	3	0	3	4	15	0	1	31
	≥ 5	12	1	6	0	0	0	0	3	2	0	0	6	0	0	30
Severe acute respiratory infection (SARI)	< 5	0	12	0	0	0	0	2	11	0	0	9	1	0	5	40
	≥ 5	1	4	0	0	0	26	6	9	0	0	66	2	0	12	126
Typhoid fever (TYF)	< 5	37	2	2	0	0	0	0	0	2	2	0	52	3	0	100
	≥ 5	33	11	10	0	2	0	6	14	24	52	0	156	8	0	316
Brucellosis (BRU)	< 5	6	1	2	0	0	0	2	0	0	0	0	18	2	0	31
	≥ 5	5	6	5	0	2	2	14	36	8	14	10	54	25	0	181
Suspected tuberculosis (TB)	< 5	2	0	1	0	0	0	0	0	0	0	0	0	0	0	3
	≥ 5	0	1	0	0	0	0	7	1	2	0	2	0	4	1	18
Suspected pertussis (PER)	< 5	8	1	0	0	0	0	0	0	0	0	0	37	0	0	46
	≥ 5	12	0	0	0	0	0	0	0	0	0	0	7	0	0	19
suspected leishmaniasis (LSH)	< 5	70	3	0	1	0	0	62	6	8	4	2	147	0	0	303
	≥ 5	87	20	3	1	2	8	302	44	16	34	0	187	0	4	708
Suspected chickenpox (CHP)	< 5	32	3	0	0	0	1	9	1	4	1	0	15	3	0	69
	≥ 5	47	2	3	0	2	1	2	0	0	0	0	3	5	0	65
Scabies (SCA)	< 5	54	10	0	0	0	1	10	0	4	11	1	50	1	0	142
	≥ 5	105	13	0	2	2	1	26	4	9	11	5	52	4	1	235
Lice (LIC)	< 5	275	8	0	2	2	17	22	1	1	5	0	35	1	1	370
	≥ 5	383	9	0	2	12	291	57	16	6	5	4	32	8	1	826
Suspected mumps (MUM)	< 5	1	0	0	0	0	0	1	0	0	0	0	27	2	0	31
	≥ 5	45	0	0	0	0	0	1	0	0	0	0	9	0	0	55
COVID-19	< 5	0	0	0	0	0	0	4	0	17	0	7	1	5	2	36
	≥ 5	87	35	0	24	9	8	51	37	81	17	13	55	64	7	488
Others	< 5	0	18	0	0	22	3	0	1	20	12	0	95	0	1	172
	≥ 5	0	39	0	0	19	5	5	1	32	20	0	38	36	2	197
Total of < 5		1821	1091	529	66	406	937	1542	288	286	407	375	3657	747	543	12695
Total of ≥ 5		2133	1104	416	133	336	1310	2320	499	453	837	1005	2801	1325	1345	16017
Grand total		3954	2195	945	199	742	2247	3862	787	739	1244	1380	6458	2072	1888	28712