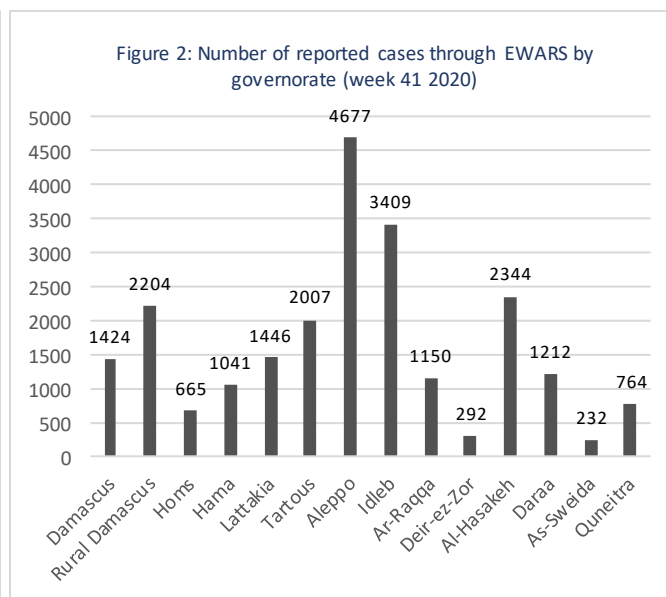
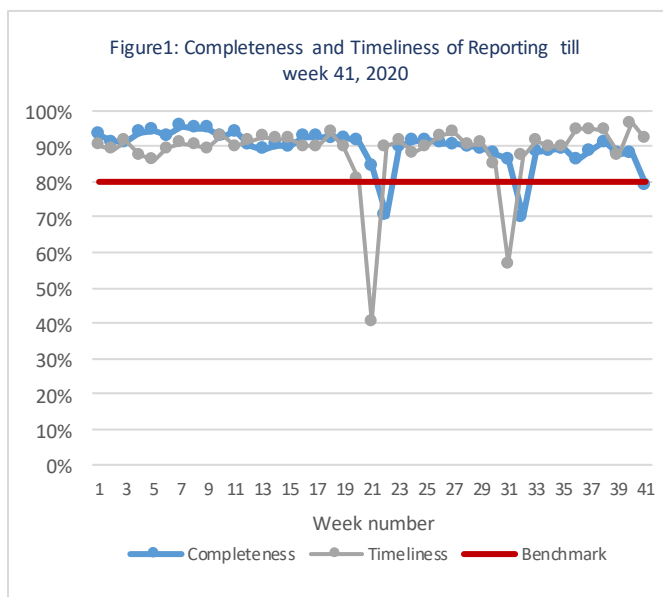


Highlights

- A total of 189,468 consultations were recorded in all the 14 governorates in week 41.
- The leading causes of morbidity among all age groups influenza-like illnesses (53.5%) and acute diarrhea (27.6%).
- 796 suspected COVID-19 were reported through EWARS system in week 41. Most of cases reported in Idleb 265 (33%) cases, Hama 133 (17%), and Aleppo 99 (12.4%). Cases reported by WHO sentinel sites in Idleb were not been investigated due to inaccessibility.
- 17 suspected measles cases were reported during week 41. the blood specimens of 8 cases were collected and tested at the reference laboratory in Damascus. The laboratory result showed all negative for measles.
- Increase in SARI cases by 35% to previous week. Number of cases in week 41 was 185 SARI cases.
- Number of cases in week 41 was 6,310 AD cases

Performance Indicators

- A total of 1,150 out of 1,303 active reporting sites (88.3%) in all 14 governorates of Syria reported through EWARS, with 97% timeliness among those sites providing data during week 41 (Figure 1).



Morbidity

- A total of 189,468 consultations were recorded in 1,303 health facilities in 14 governorates in week 41, 2020. Among them, 22,867 cases were EWARS notifiable health conditions (Figure 2).
- Among all age groups, the leading causes of morbidity influenza-like illnesses (ILI) (53.5%), and acute diarrhea (AD) (27.6%).
- Of the 22,867 total reported cases, 51.2% (11,698) were female, and 38.2% (8,726) were children under 5 years old.

- Among children under 5 years of age, 52.1% of cases are ILI, and AD representing 35.6% of the cases during this reporting period (Figure 3).
- 796 suspected COVID-19 cases registered with 36 among children under 5 years of age, and 760 (5.4%) among cases equal or older than 5 years old.

Figure 3: propositional morbidity by age group in week 41, 2020

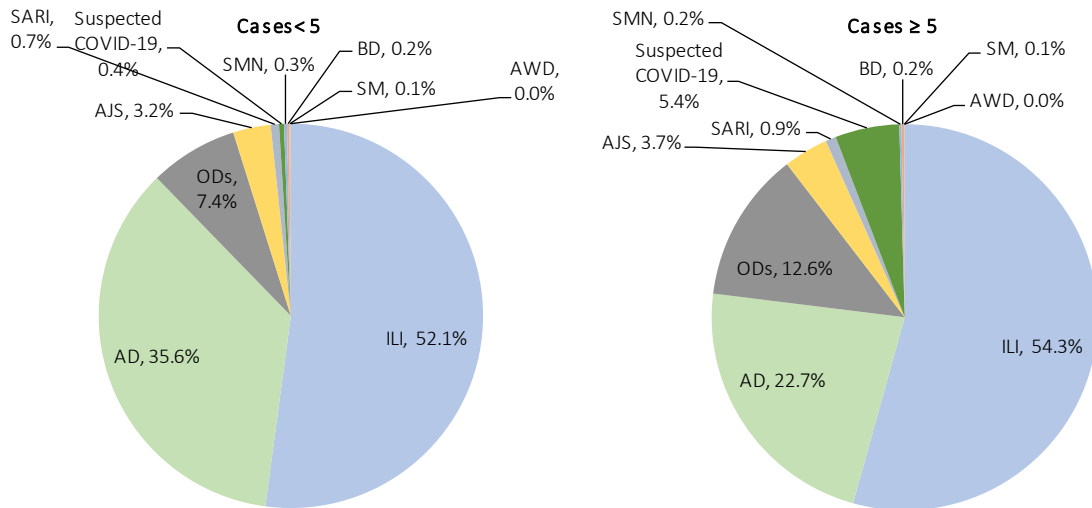
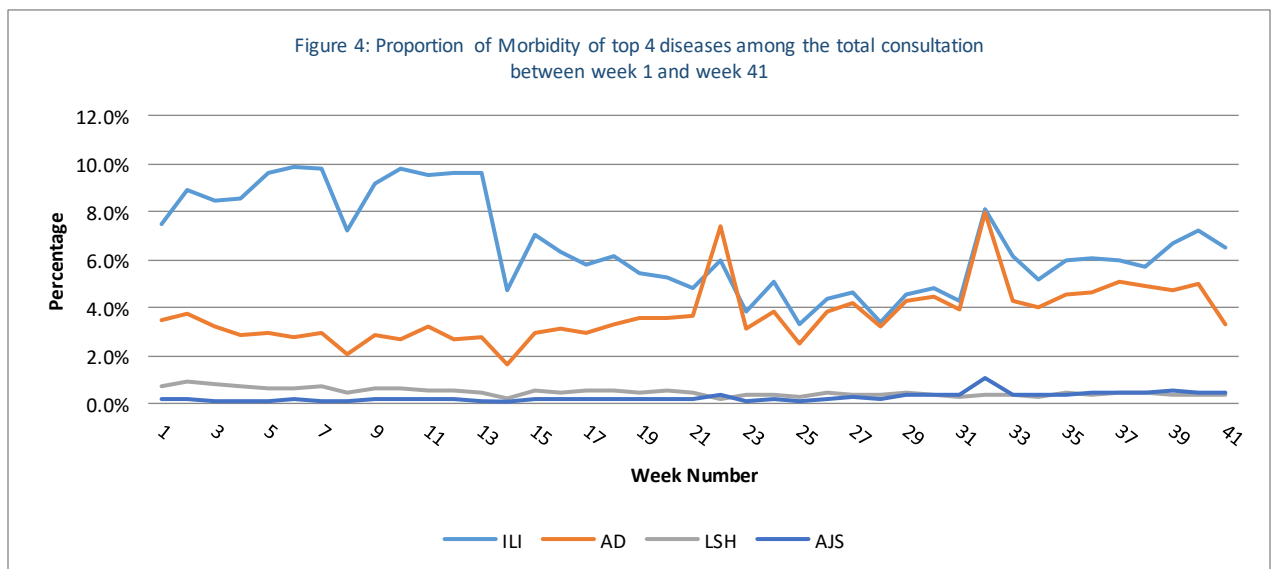
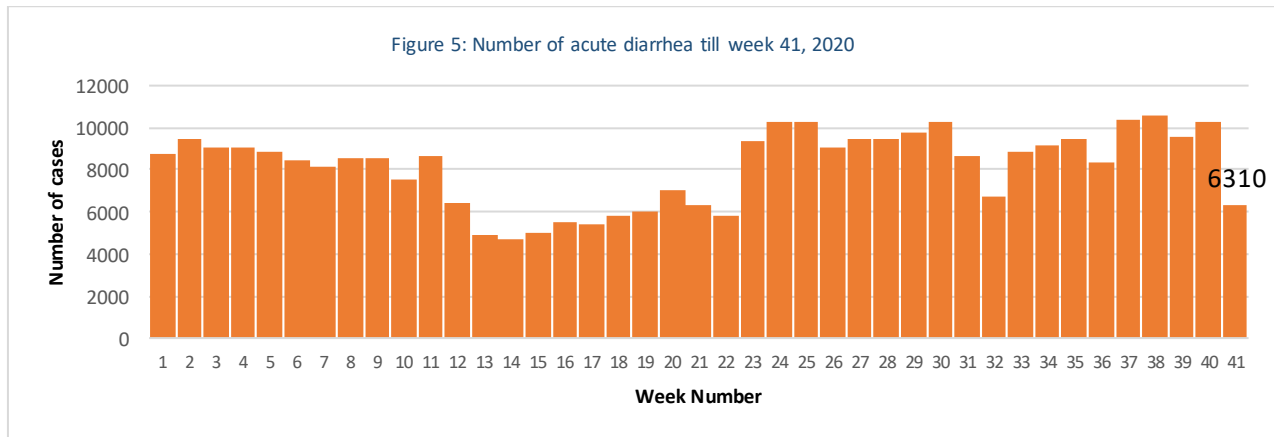


Figure 4: Proportion of Morbidity of top 4 diseases among the total consultation between week 1 and week 41



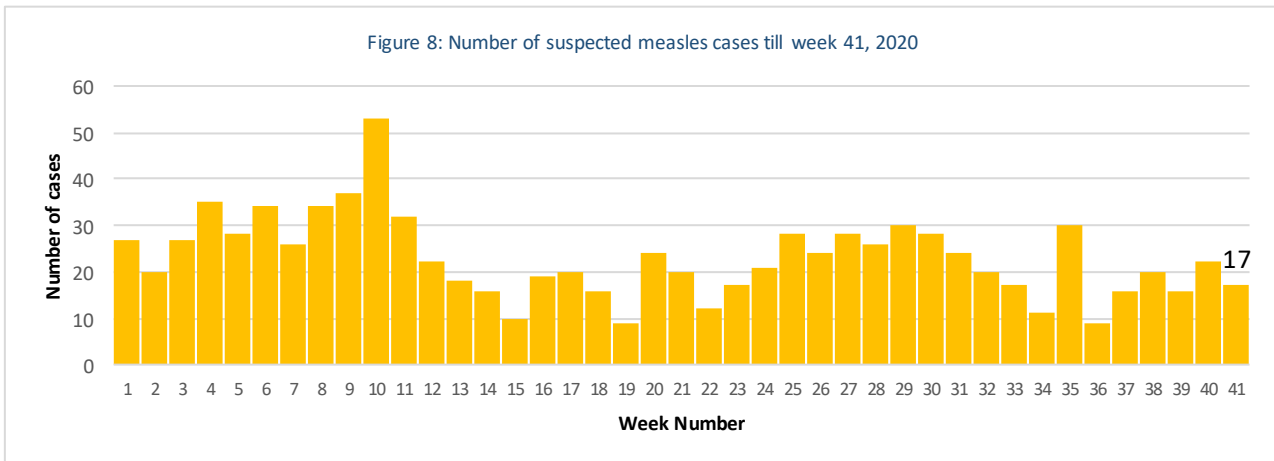
1. Waterborne Diseases

- 0 cases of acute watery diarrhea (AWD) in week 41.
- A total of 6,310 AD cases were reported during week 41.



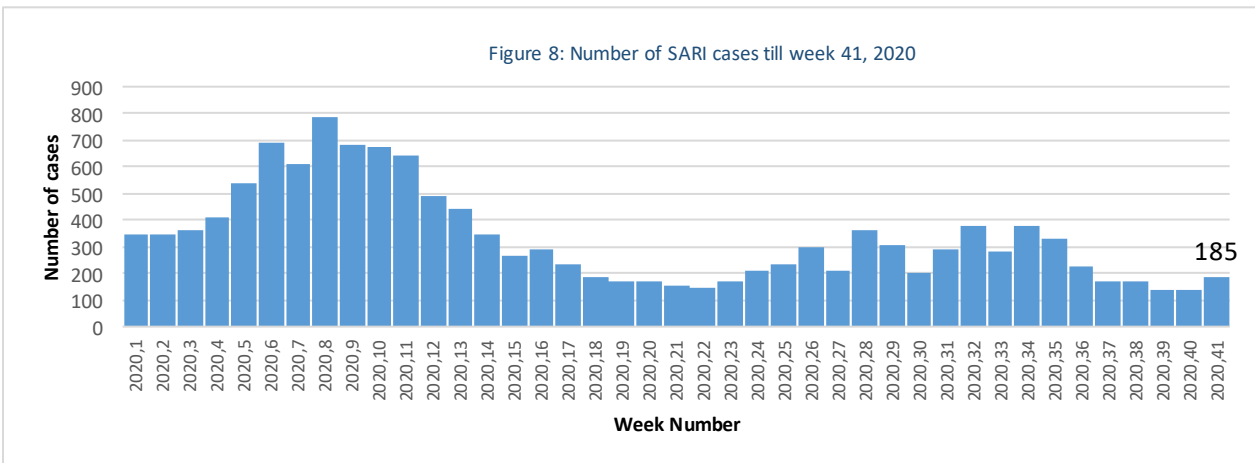
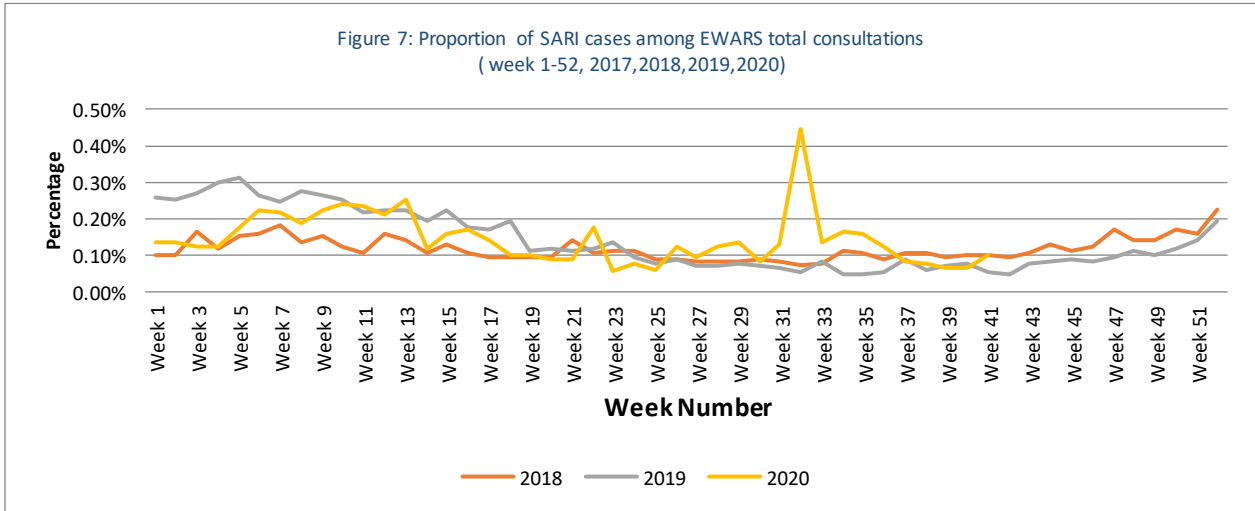
2. Vaccine Preventable Diseases

- 0 cases of acute flaccid paralysis (AFP) were reported in week 41
- Number of suspected measles in week 41 was (17) cases. Most cases were reported from Idleb (9), and Damascus, Tartous, Dar'a, and Aleppo (2)



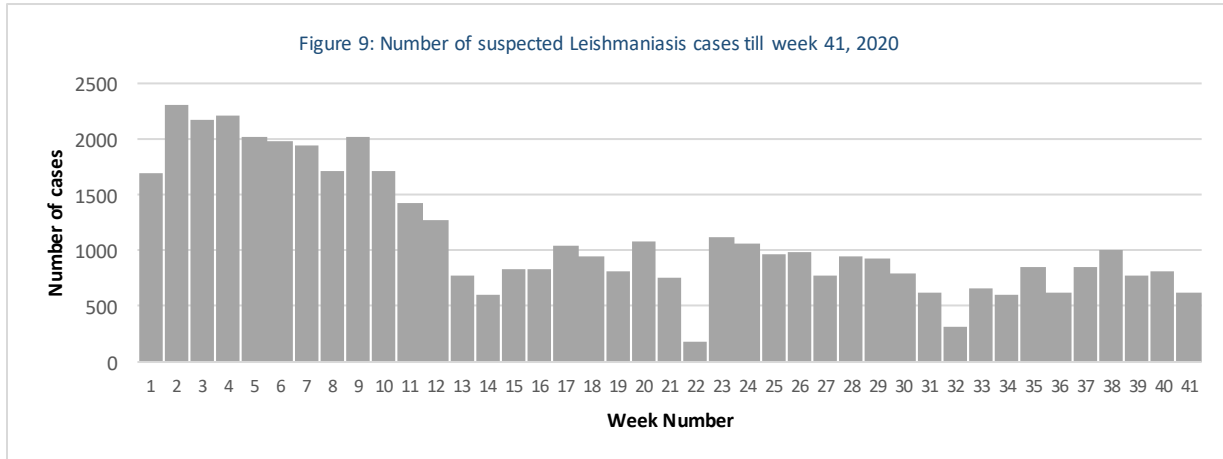
3. Respiratory Diseases

- In total, 185 SARI cases were reported during week 41. Figure 7 shows comparison of proportion of SARI cases among EWARS total consultation, the chart shows an increase in week 41 (Figure 7 and 8)
- In total, 12,228 ILI cases were reported during week 41.



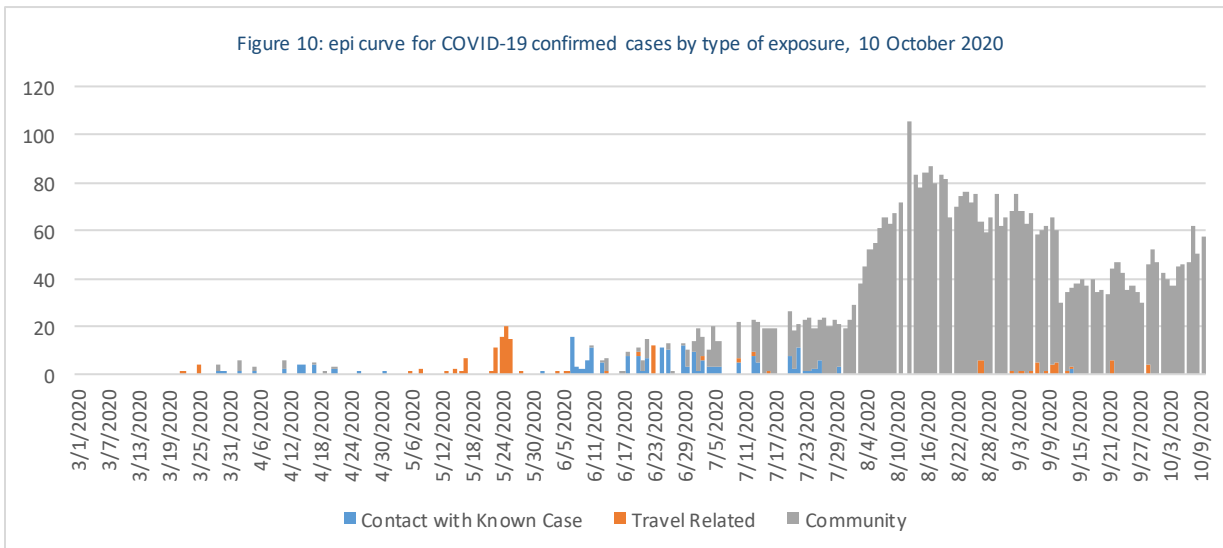
4. Other Diseases

- 2,431 cases were reported as “other diseases” through EWARS. The health conditions with the highest incidents were lice (986), leishmaniasis(615), and scabies(240).
- During week 41, most of suspected leishmaniasis cases were reported from Aleppo (50.7%), Deir-ez-Zor (11.1%), and Idleb (19.0%).



COVID-19

During the week 41 MoH reported 344 confirmed COVID-19 cases in Syria including 17 deceased cases through the COVID-19 surveillance. As of 10 October, 4673 cases reported in 13 governorates. cases distributed as follows: 1495 (32%) in Damascus, 1120 (24%) in Aleppo, 451 (9.7%) in Lattakia, 449 (9.6%) in Rural Damascus, 447 (9.6%) in Homs, 150 (3.2%) in As-Sweida, 148 (3.2%) in Hama, 166 (3.6%) in Tartous, 103 (2.2%) in Dar'a, 87 (1.9%) in Quneitra, 35 (0.7%) in Al-Hasakeh, 15 (0.3%) in Deir-ez-Zor, and 7 (0.1%) in Ar-Raqa. Number of deaths related to COVID-19 is 221 in 11 governorates, CFR 4.7%. 141 cases (3%) are travel related cases, 205 cases (4.4%) are contacts of confirmed cases, and 4327 cases (92.6%) are community. (Figure 10).



Public Health Response Actions

COVID-19

- Between 5 and 7th of October; WHO supported building the capacity of 37 personnel of Rapid Response teams in 14 governorates. The training was provided through WHO EMRO technical support. The aim of the training was to enhance the investigation and response measures to diseases alerts, and with focusing of COVID-19 investigation and response. Since the start of COVID-19 pandemic WHO supported building the capacity of 470 RRTs personnel on COVID-19 investigation and response measures.
- WHO continues to provide needed support for the Rapid response teams (RRTs) to undertake investigation and response of COVID-19 alerts by facilitating the transportation of RRTs, samples collection and transporting to designated laboratory in 5 governorates. During the reporting period more than 1600 suspected COVID-19 cases were investigated properly within 24 hours, in addition WHO supported the transporting of 187 specimens of COVID-19 suspected cases to the central laboratories in four governorates.

Suspected measles

- A total of 22 suspected measles cases were reported during week 41. All the cases were investigated by rapid response teams of the health directorates expect for cases reported from Adleb due to accessibility. The blood specimens from 10 suspected cases were collected and tested for IgM ELISA at the reference laboratory in Damascus. the lab results showed negative results for measles for all cases.

Comparison with Previous Week by Health Condition

| Disease | Week 40 | Week 41 |
|---|--------------|--------------|
| Acute diarrhea (AD) | 10292 | 6310 |
| Bloody diarrhea (BD) | 323 | 45 |
| Acute watery diarrhea (AWD) | 0 | 0 |
| Acute jaundice syndrome (AJS) | 980 | 804 |
| Influenza like illness (ILI) | 14939 | 12228 |
| Acute flaccid paralysis (AFP) | 6 | 0 |
| Suspected measles (SM) | 22 | 17 |
| Suspected meningitis (SMN) | 85 | 48 |
| Typhoid fever (TYF) | 305 | 152 |
| Brucellosis (BRU) | 129 | 94 |
| Suspected tuberculosis (TB) | 21 | 27 |
| Severe acute respiratory infection (SARI) | 137 | 185 |
| Suspected pertussis (PER) | 70 | 55 |
| suspected leishmaniasis (LSH) | 819 | 615 |
| Suspected chickenpox (CHP) | 154 | 97 |
| Scabies (SCA) | 281 | 240 |
| Lice (LIC) | 1222 | 986 |
| Suspected mumps (MUM) | 77 | 53 |
| COVID-19 | 795 | 796 |
| Others | 262 | 112 |
| Total | 30919 | 22864 |

Case Distribution by Age Group, and by Governorate

Week 41, 2020

| | | Idleb | Al-Hasakeh | Ar-Raqqa | As-Sweida | Quneitra | Lattakia | Aleppo | Hamana | Homs | Dar'a | Damascus | Deir-ez-Zor | Rural Damascus | Tartous | Total |
|---|----|-------|------------|----------|-----------|----------|----------|--------|--------|------|-------|----------|-------------|----------------|---------|-------|
| Acute diarrhoea (AD) | <5 | 644 | 597 | 283 | 34 | 70 | 52 | 509 | 172 | 95 | 120 | 166 | 76 | 196 | 93 | 3107 |
| | ≥5 | 591 | 436 | 234 | 36 | 69 | 61 | 619 | 187 | 79 | 165 | 252 | 69 | 213 | 192 | 3203 |
| Bloody diarrhoea (BD) | <5 | 0 | 6 | 3 | 0 | 0 | 0 | 1 | 0 | 0 | 5 | 2 | 0 | 0 | 0 | 17 |
| | ≥5 | 0 | 4 | 12 | 0 | 0 | 0 | 1 | 2 | 0 | 5 | 3 | 0 | 0 | 1 | 28 |
| Acute watery diarrhoea (AWD) | <5 | 0 | 0 | 0 | 0 | 0 | 0 | 0 | 0 | 0 | 0 | 0 | 0 | 0 | 0 | 0 |
| | ≥5 | 0 | 0 | 0 | 0 | 0 | 0 | 0 | 0 | 0 | 0 | 0 | 0 | 0 | 0 | 0 |
| Acute jaundice syndrome (AJS) | <5 | 55 | 23 | 148 | 0 | 1 | 0 | 10 | 0 | 1 | 6 | 3 | 0 | 0 | 29 | 276 |
| | ≥5 | 45 | 44 | 121 | 4 | 1 | 0 | 15 | 197 | 9 | 16 | 10 | 0 | 4 | 62 | 528 |
| Influenza like illness (ILI) | <5 | 408 | 454 | 165 | 47 | 301 | 464 | 1042 | 72 | 147 | 230 | 188 | 25 | 620 | 385 | 4548 |
| | ≥5 | 434 | 617 | 157 | 75 | 296 | 665 | 1781 | 126 | 211 | 488 | 689 | 42 | 958 | 1141 | 7680 |
| Acute flaccid paralysis (AFP) | <5 | 0 | 0 | 0 | 0 | 0 | 0 | 0 | 0 | 0 | 0 | 0 | 0 | 0 | 0 | 0 |
| | ≥5 | 0 | 0 | 0 | 0 | 0 | 0 | 0 | 0 | 0 | 0 | 0 | 0 | 0 | 0 | 0 |
| Suspected measles (SM) | <5 | 4 | 0 | 0 | 0 | 0 | 0 | 1 | 0 | 0 | 2 | 0 | 0 | 2 | 0 | 9 |
| | ≥5 | 5 | 0 | 0 | 0 | 0 | 0 | 1 | 0 | 0 | 0 | 0 | 0 | 0 | 2 | 8 |
| Suspected meningitis (SMN) | <5 | 5 | 0 | 6 | 1 | 0 | 0 | 1 | 5 | 0 | 3 | 0 | 0 | 0 | 1 | 22 |
| | ≥5 | 13 | 0 | 5 | 1 | 0 | 0 | 2 | 2 | 0 | 2 | 1 | 0 | 0 | 0 | 26 |
| Severe acute respiratory infection (SARI) | <5 | 0 | 17 | 0 | 0 | 0 | 0 | 10 | 15 | 1 | 0 | 10 | 0 | 0 | 8 | 61 |
| | ≥5 | 1 | 5 | 0 | 2 | 0 | 0 | 7 | 10 | 5 | 0 | 53 | 0 | 0 | 41 | 124 |
| Typhoid fever (TYF) | <5 | 40 | 0 | 0 | 0 | 0 | 0 | 1 | 0 | 0 | 0 | 0 | 0 | 2 | 0 | 43 |
| | ≥5 | 30 | 5 | 9 | 0 | 0 | 0 | 6 | 12 | 2 | 34 | 0 | 2 | 9 | 0 | 109 |
| Brucellosis (BRU) | <5 | 7 | 0 | 2 | 0 | 0 | 0 | 2 | 3 | 0 | 0 | 0 | 0 | 2 | 0 | 16 |
| | ≥5 | 10 | 2 | 2 | 0 | 0 | 0 | 10 | 6 | 2 | 10 | 10 | 0 | 26 | 0 | 78 |
| Suspected tuberculosis (TB) | <5 | 2 | 0 | 0 | 0 | 0 | 0 | 0 | 0 | 0 | 0 | 0 | 0 | 1 | 0 | 3 |
| | ≥5 | 0 | 0 | 0 | 0 | 0 | 0 | 13 | 0 | 0 | 0 | 4 | 0 | 6 | 1 | 24 |
| Suspected pertussis (PER) | <5 | 13 | 0 | 0 | 0 | 0 | 0 | 0 | 0 | 0 | 0 | 0 | 1 | 0 | 0 | 14 |
| | ≥5 | 41 | 0 | 0 | 0 | 0 | 0 | 0 | 0 | 0 | 0 | 0 | 0 | 0 | 0 | 41 |
| suspected leishmaniasis (LSH) | <5 | 46 | 11 | 0 | 0 | 0 | 0 | 54 | 2 | 0 | 0 | 0 | 15 | 1 | 1 | 130 |
| | ≥5 | 71 | 28 | 2 | 0 | 0 | 5 | 258 | 53 | 4 | 0 | 0 | 53 | 2 | 9 | 485 |
| Suspected chickenpox (CHP) | <5 | 23 | 0 | 0 | 0 | 2 | 0 | 4 | 0 | 0 | 0 | 1 | 0 | 3 | 1 | 34 |
| | ≥5 | 52 | 2 | 0 | 1 | 1 | 1 | 3 | 0 | 0 | 0 | 0 | 0 | 3 | 0 | 63 |

| | | | | | | | | | | | | | | | | |
|-----------------------|----|------|------|------|-----|-----|------|------|------|-----|------|------|-----|------|------|-------|
| Scabies (SCA) | <5 | 29 | 17 | 0 | 0 | 0 | 0 | 9 | 0 | 2 | 0 | 0 | 1 | 1 | 0 | 59 |
| | ≥5 | 81 | 1 | 0 | 1 | 1 | 4 | 62 | 7 | 8 | 8 | 0 | 3 | 5 | 0 | 181 |
| Lice (LIC) | <5 | 168 | 1 | 0 | 2 | 0 | 15 | 22 | 2 | 1 | 53 | 0 | 2 | 43 | 0 | 309 |
| | ≥5 | 275 | 11 | 0 | 5 | 5 | 175 | 132 | 34 | 4 | 21 | 0 | 3 | 12 | 0 | 677 |
| Suspected mumps (MUM) | <5 | 3 | 1 | 0 | 0 | 1 | 0 | 0 | 0 | 0 | 1 | 0 | 0 | 0 | 0 | 6 |
| | ≥5 | 45 | 1 | 1 | 0 | 0 | 0 | 0 | 0 | 0 | 0 | 0 | 0 | 0 | 0 | 47 |
| COVID-19 | <5 | 0 | 0 | 0 | 0 | 0 | 0 | 20 | 0 | 5 | 0 | 10 | 0 | 0 | 1 | 36 |
| | ≥5 | 265 | 12 | 0 | 23 | 12 | 0 | 79 | 133 | 65 | 18 | 22 | 0 | 92 | 39 | 760 |
| Others | <5 | 0 | 15 | 0 | 0 | 3 | 0 | 1 | 0 | 9 | 5 | 0 | 0 | 1 | 0 | 34 |
| | ≥5 | 0 | 34 | 0 | 0 | 1 | 4 | 1 | 1 | 15 | 20 | 0 | 0 | 2 | 0 | 78 |
| Total of <5 | | 1447 | 1142 | 607 | 84 | 378 | 531 | 1687 | 271 | 261 | 425 | 380 | 120 | 872 | 519 | 8724 |
| Total of ≥5 | | 1959 | 1202 | 543 | 148 | 386 | 915 | 2990 | 770 | 404 | 787 | 1044 | 172 | 1332 | 1488 | 14140 |
| Grand total | | 3409 | 2344 | 1150 | 232 | 764 | 1446 | 4677 | 1041 | 665 | 1212 | 1424 | 292 | 2204 | 2007 | 22864 |