







### In this issue of Syria COVID-19 Morbidity and Mortality Summary (SMMS) N° 08:

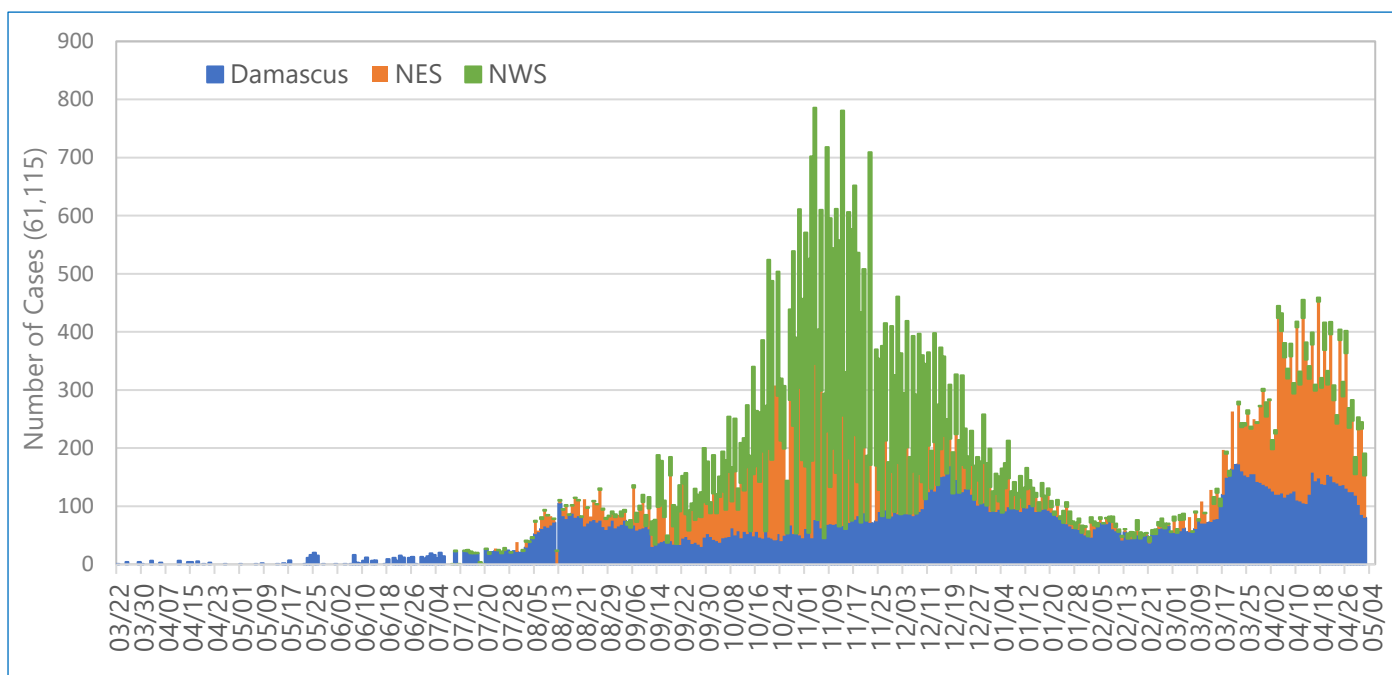
- ✓ detailed epidemiological update on COVID-19 outbreak in Syria and North East Syria
- ✓ daily and weekly distribution of COVID-19 cases and related deaths
- ✓ number of cases, deaths, testing rate, positivity rate, attack rate and case fatality rate per governorate
- ✓ daily distribution of COVID-19 cases and rolling seven-day average per governorate in whole of Syria
- ✓ overall and cumulative weekly attack rate and rates in selected governorates in Syria
- ✓ number of COVID-19 testing laboratories and number of daily tested per 100,000 in Syria and North East Syria
- ✓ geographical distribution of COVID-19 attack rate (AR) per governorate in Syria

Whole of Syria	Tested	Confirmed	Recovered	Dead
				
<b>TOTAL</b>	<b>240,081</b>	<b>61,115</b>	<b>38,840</b>	<b>2,873</b>
<b>Syria</b>	<b>75,171</b>	<b>22,898</b>	<b>17,171</b>	<b>1,603</b>
<b>NES</b>	<b>41,781</b>	<b>16,184</b>	<b>1,654</b>	<b>878</b>
<b>NWS</b>	<b>123,129</b>	<b>22,033</b>	<b>20,015</b>	<b>2,701</b>
	Tests/100,000	AR/100,000	Recovery Rate %	CFR%
	<b>1,177</b>	<b>299.6</b>	<b>63.6%</b>	<b>4.7</b>
	COVID-19 Facilities	Isolation Beds	ICU Beds	Ventilators
<b>TOTAL</b>	<b>185</b>	<b>3,632</b>	<b>1,147</b>	<b>857</b>
<b>Syria</b>	<b>151</b>	<b>1,832</b>	<b>828</b>	<b>602</b>
<b>NES</b>	<b>22</b>	<b>689</b>	<b>85</b>	<b>93</b>
<b>NWS</b>	<b>12</b>	<b>1,111</b>	<b>234</b>	<b>162</b>

## 1. Whole of Syria (WoS)

Between 23 March 2020 and 05 May, there were sixty-one-thousand-one-hundred-fifteen (**61,115**) COVID-19 cases<sup>1</sup> confirmed by rt-PCR. Out of the total number of cases, **37.4%** (**22,898/61,115**) were reported from Damascus, **36.1%** (**22,033**) from North West Syria (NWS), and the remaining **26.5%** (**16,184**) were reported from North East Syria (NES). During the same reporting period, a total of two-thousand-eight-hundred-seventy-three (**2,873**) related deaths were reported, of them **55.8%** (**1,603/2,873**) from **Syria**, **22.8%** (**655**) from **NWS**, and **21.4%** (**615**) from **NES** - the overall Case Fatality Ratio (**CFR**)<sup>2</sup> is **4.7%** (**2,549/56,838**).

*The figure below is showing the daily distribution of reported confirmed COVID-19 cases, 23 March – 05 May 2021, whole of Syria.*



*The following table is showing the reported number of cases, deaths, testing rate, positivity rate, attack rate and case fatality rate per governorate, 23 March 2020 – 13 April 2021, whole of Syria.*

Governorate	# Test	Test/100,000	# Positive	Positivity Rate	Attack Rate	# Deaths	CFR
As-Sweida	1,720	454	1,183	<b>68.78%</b>	312.0	74	<b>6.26%</b>
Tartous	2,612	288	1,773	<b>67.88%</b>	195.6	192	<b>10.83%</b>
Homs	4,967	342	2,790	<b>56.17%</b>	192.3	271	<b>9.71%</b>
Ar-Raqqa	9,559	1,384	3,588	37.54%	<b>519.4</b>	65	1.81%
Hama	2,642	197	951	36.00%	70.9	40	4.21%
Aleppo	<b>81,257</b>	<b>2,066</b>	<b>15,072</b>	18.55%	383.2	<b>539</b>	3.58%
Dar'a	3,406	335	1,228	36.05%	121.0	59	4.80%
Deir-ez-Zor	2,247	303	884	39.34%	119.3	64	7.24%
Rural Damascus	8,814	279	2,433	27.60%	77.0	34	1.40%
Quneitra	1,857	1,798	449	24.18%	<b>434.8</b>	29	6.46%
Damascus	22,251	1,212	5,177	23.27%	282.1	<b>505</b>	<b>9.75%</b>
Lattakia	17,152	1,446	3,562	20.77%	300.2	191	5.36%
Al-Hasakeh	26,060	<b>2,458</b>	<b>10,235</b>	39.27%	<b>965.3</b>	<b>404</b>	3.95%
Idleb	<b>55,537</b>	<b>2,146</b>	<b>11,790</b>	21.23%	<b>455.5</b>	<b>406</b>	3.44%
<b>Total</b>	<b>240,081</b>	<b>1,177</b>	<b>61,115</b>	<b>25.46%</b>	<b>299.7</b>	<b>2,873</b>	<b>4.70%</b>

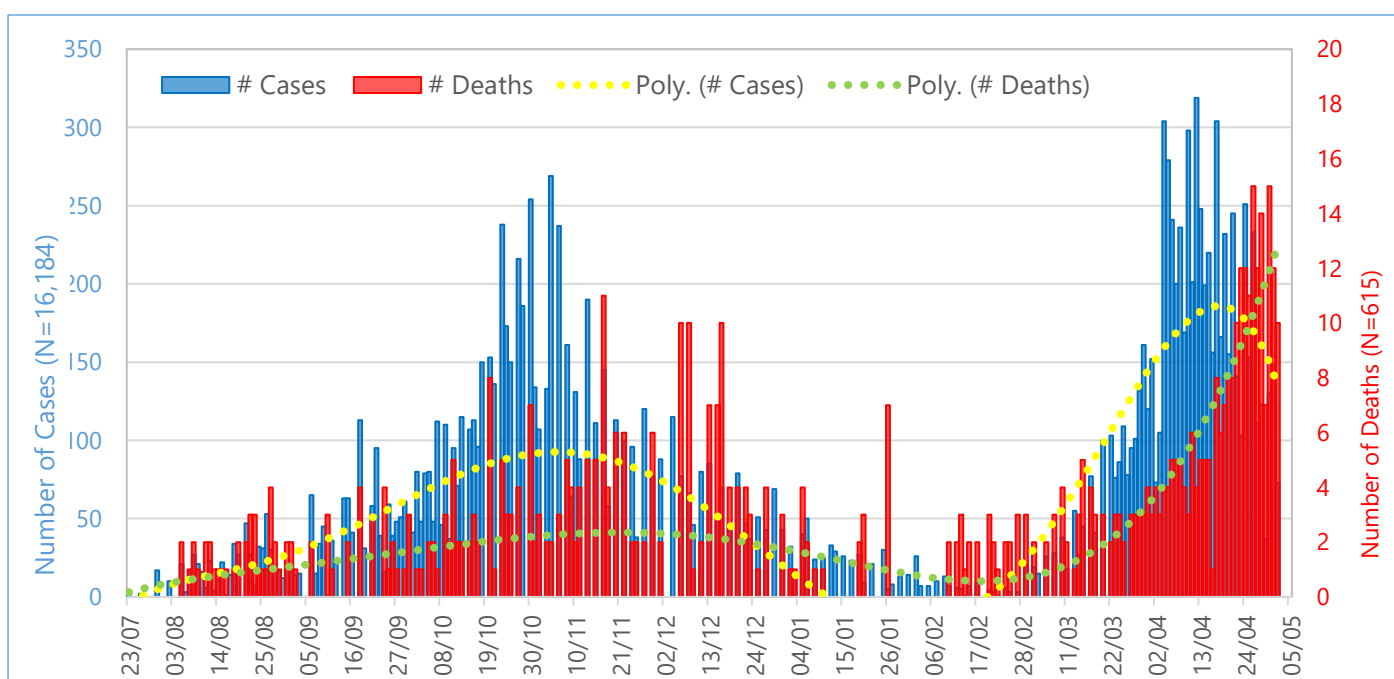
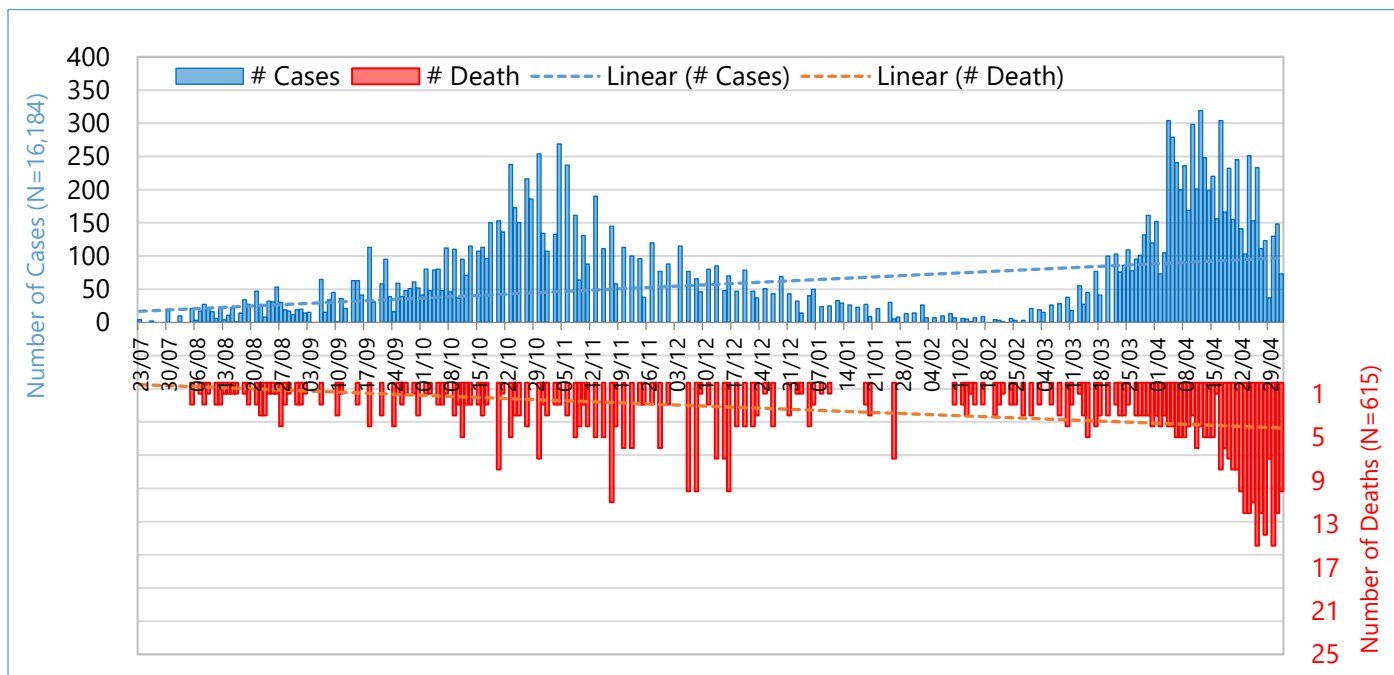
<sup>1</sup> WHO Syria COVID-19 Situation Reports present official counts of confirmed COVID-19 as announced by the MOH on the indicated date. Difference in data between the WHO reports and other sources can result from using different cutoff times for the aggregation and reporting of data. the total number of new cases in the country.

**2. North East Syria (NES)**

In North East Syria, between 23 July 2020 and 05 May 2021, there were sixteen-thousand-one-hundred-eighty-four (16,184) COVID-19 cases<sup>3</sup> confirmed by rt-PCR, including six-hundred-fifteen (615) related deaths. Case Fatality Ratio (CFR) is 3.8%.

During the same period, a total of 41,781 COVID-19 tests were conducted with the overall positivity rate of 38.7%. According to available data, health workers are representing 6.0% (966) among the total number of reported cases.

**The figures below are showing the daily distribution of reported confirmed COVID-19 cases, 23 March 2020 – 05 May 2021, North East Syria (NES).**

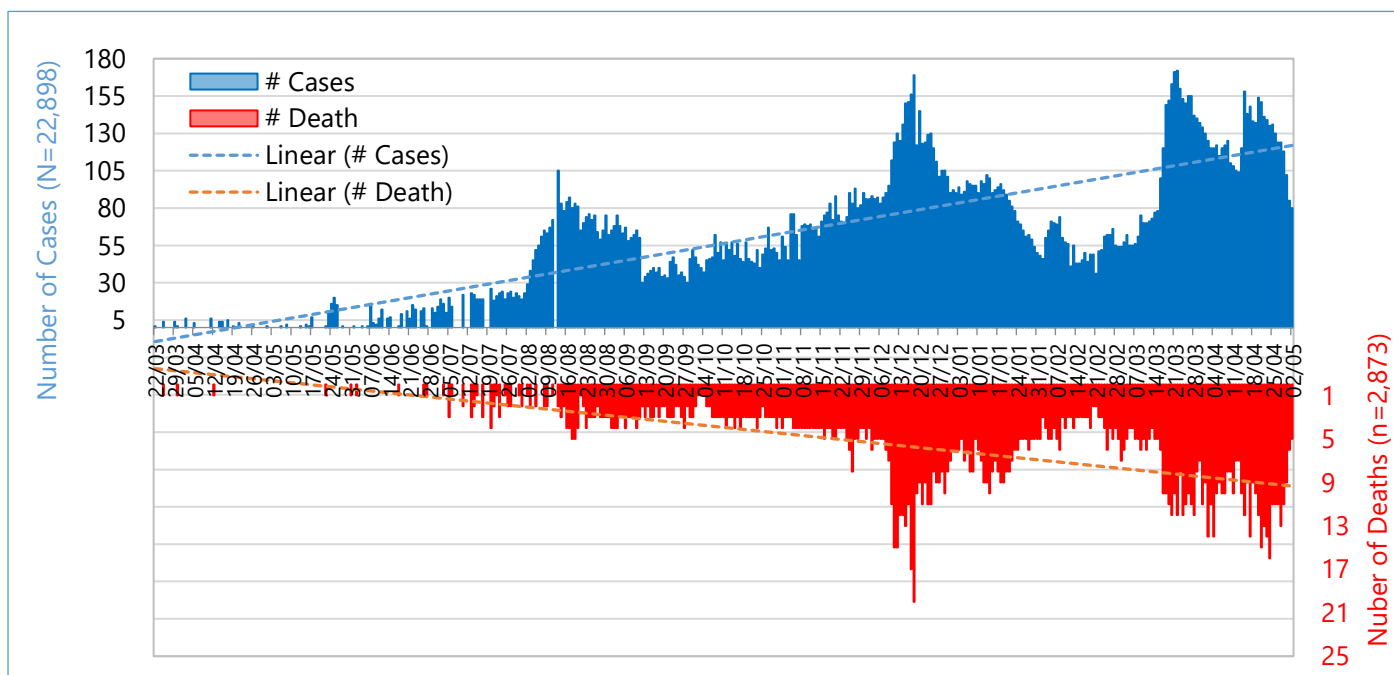
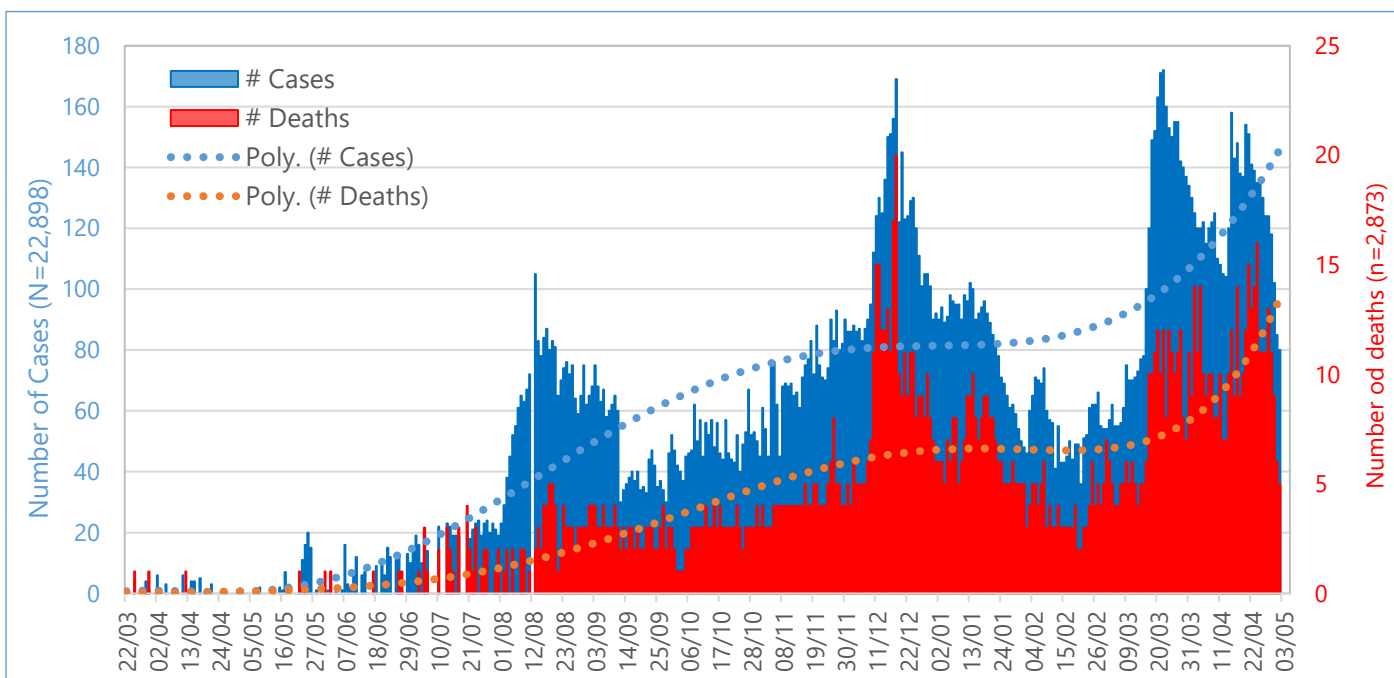


<sup>3</sup> WHO Syria COVID-19 Situation Reports present official counts of confirmed COVID-19 as announced by the MOH on the indicated date. Difference in data between the WHO reports and other sources can result from using different cutoff times for the aggregation and reporting of the total number of new cases in the country.

### 3. Syria

Between 23 March 2020 and 05 May 2021, MOH there were twenty-two thousand-eight-hundred-ninety-eight (**22,898**) COVID-19 cases<sup>4</sup> confirmed by rt-PCR, including two-thousand-eight-hundred-seventy-three (**2,873**) related deaths. Case Fatality Ratio (**CFR**)<sup>5</sup> is **6.8%**. In the last four epidemiological weeks (11-14) of 2021 in comparison to the previous epidemiological four weeks (7-10), the number of new COVID-19 cases increased by **145%** (**3,708** and **1,512** respectively) and the number of death cases increased by **130%** (**274** and **119** respectively).

**The figures below are showing the daily and weekly distribution of reported confirmed COVID-19 cases and deaths, 23 March 2020 – 05 May 2021, Syria.**

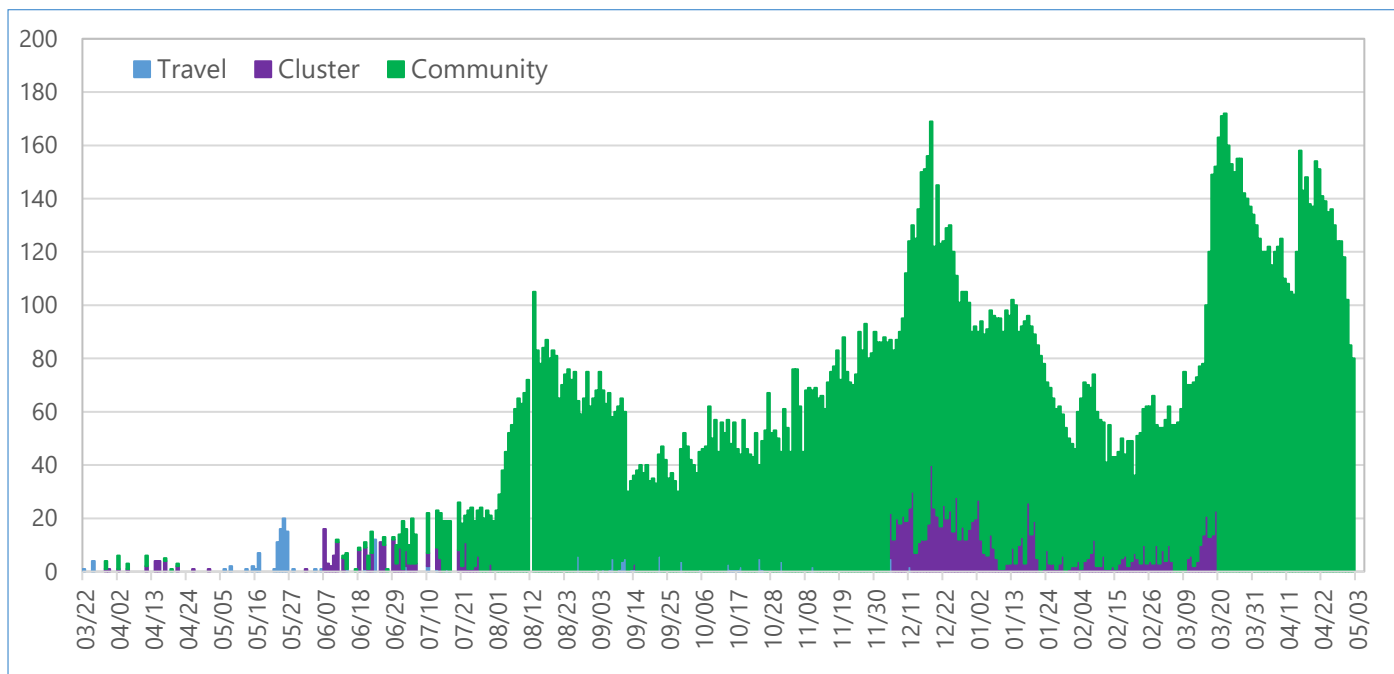


<sup>4</sup> WHO Syria COVID-19 Situation Reports present official counts of confirmed COVID-19 as announced by the MOH on the indicated date. Difference in data between the WHO reports and other sources can result from using different cutoff times for the aggregation and reporting of the total number of new cases in the country.

<sup>5</sup> CFR is not same as Infection fatality ratio (IFR) which is the proportion of individuals diagnosed with a disease who die from that disease and is therefore a measure of severity among detected cases, Estimating mortality from COVID-19, WHO scientific brief, 4 August 2020. <https://www.who.int/publications/i/item/WHO-2019-nCoV-Sci-Brief-Mortality-2020>.

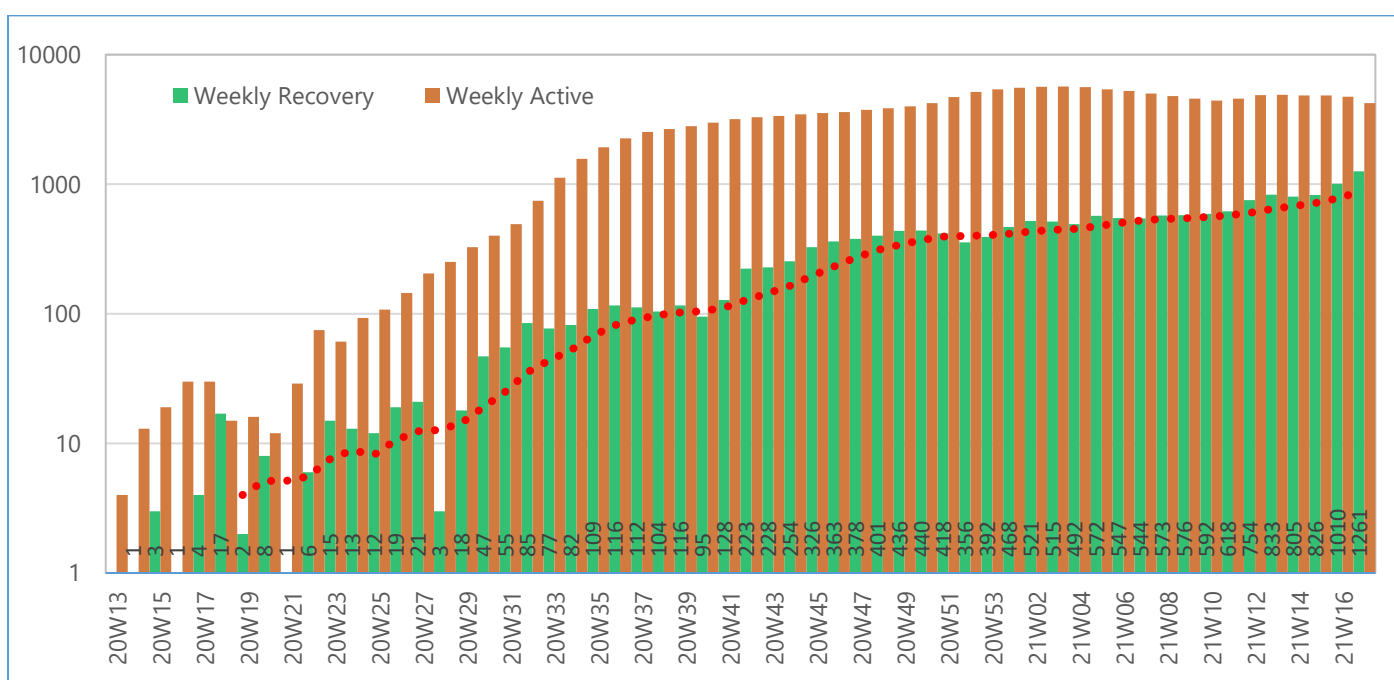
As of 05 May 2021, information on the mode of transmission was available on **100%** of confirmed reported COVID-19 cases (**22,898/22,898**). Of all cases, **94.0%** (21,522) were community transmission, **5.5%** (1,207) - contacts of confirmed cases (cluster) and **0.7%** (169) were imported cases.

**The figure below is showing the mode of transmission of the reported confirmed COVID-19 cases, 23 March 2020 – 05 May 2021, Syria.**



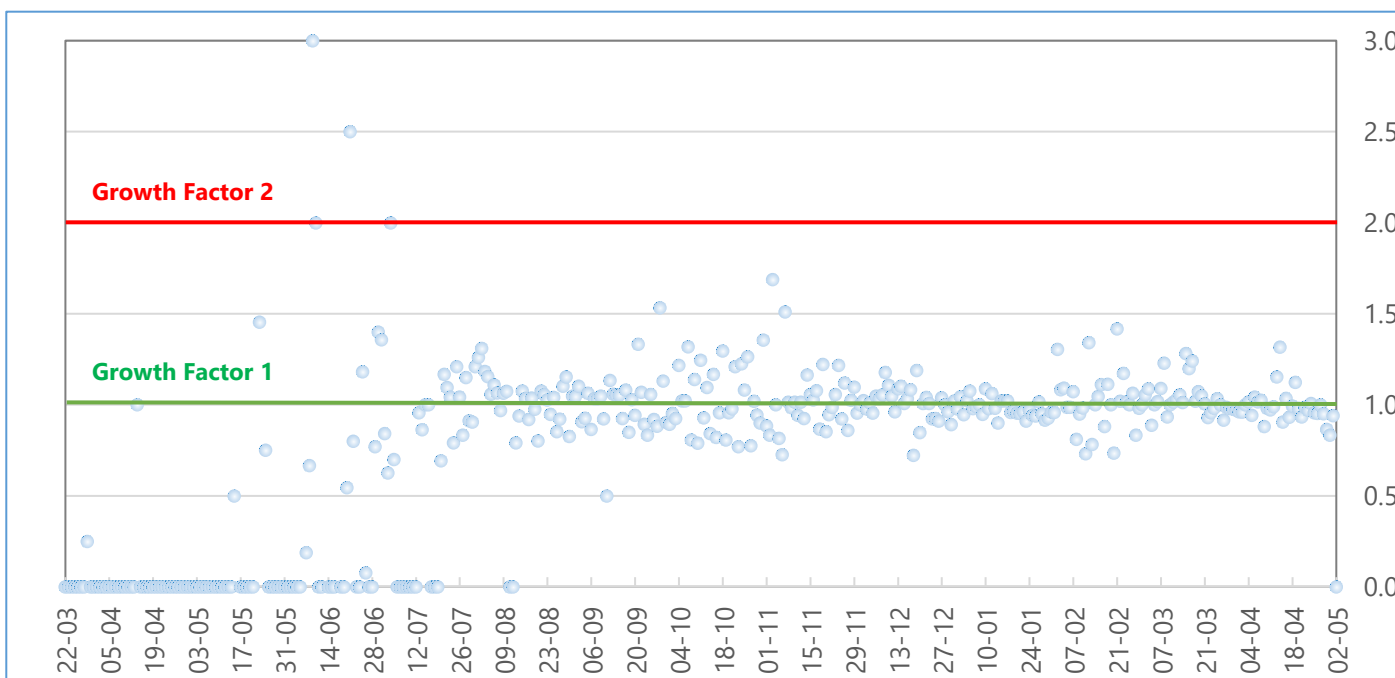
In the epidemiological week 17, 2021, the number of COVID-19 weekly active cases **decreased** by **12.2%**, in comparison to the previous week (**4,742** and **4,228** respectively) and over the same period, the number of **recovered** COVID-19 cases increased by **24.9%** (**1261** and **1010** respectively).

**The figure below is showing the weekly outcomes of the reported confirmed COVID-19 cases, 23 March 2020 – 05 May 2021, Syria.**



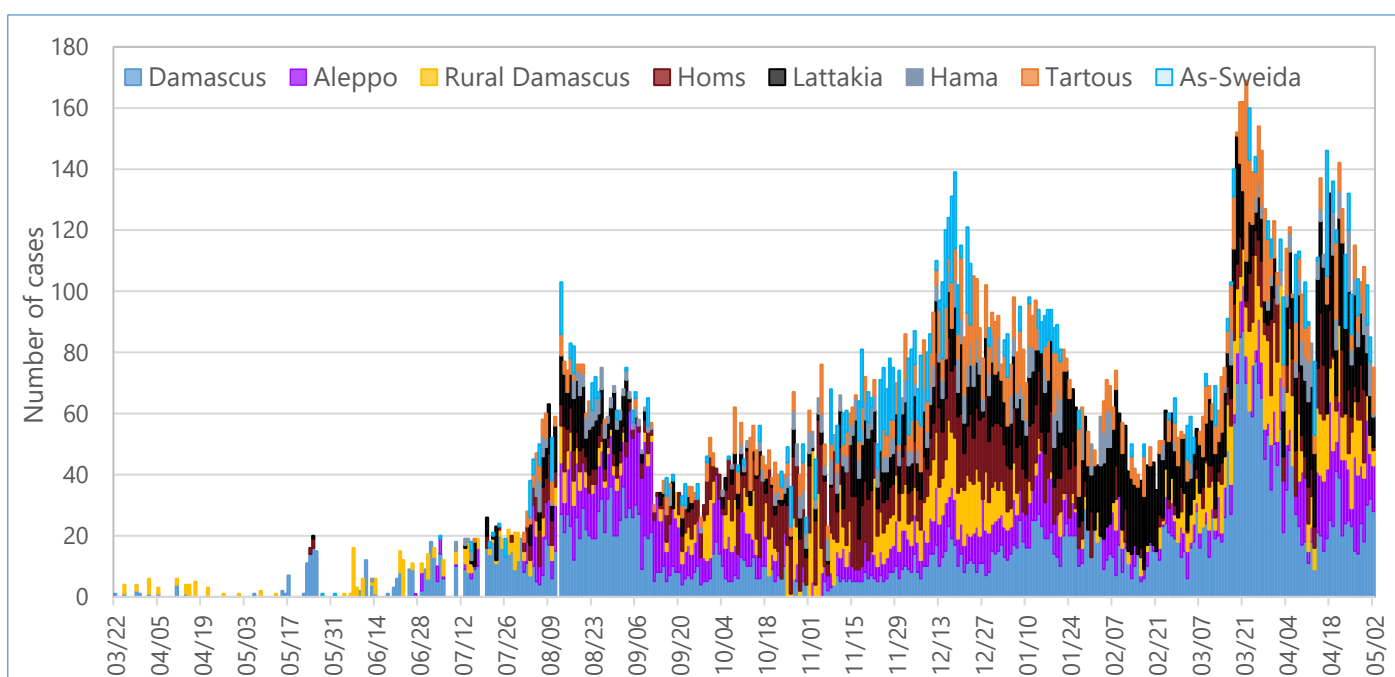
**Growth factor** (every day's number of new cases / number of new cases on the previous day) between **0** and **1** indicates a decline; when it is above 1 it signals an increase, and if it is persistently above 1 this could signify exponential growth.

*The figure below is showing the Growth Factor of daily confirmed COVID-19 cases, 23 March 2020 – 05 May 2021, Syria.*

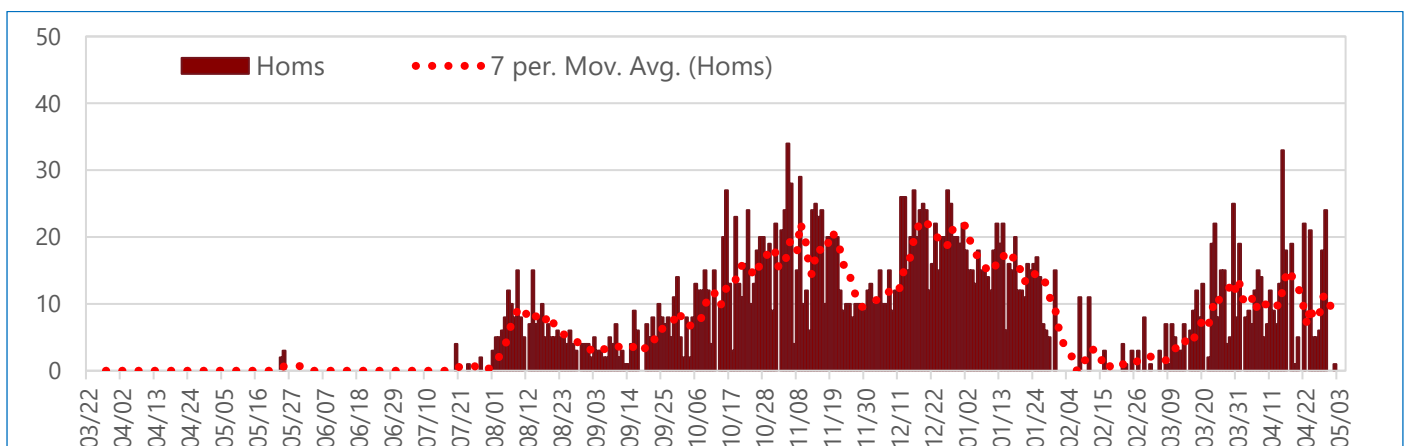
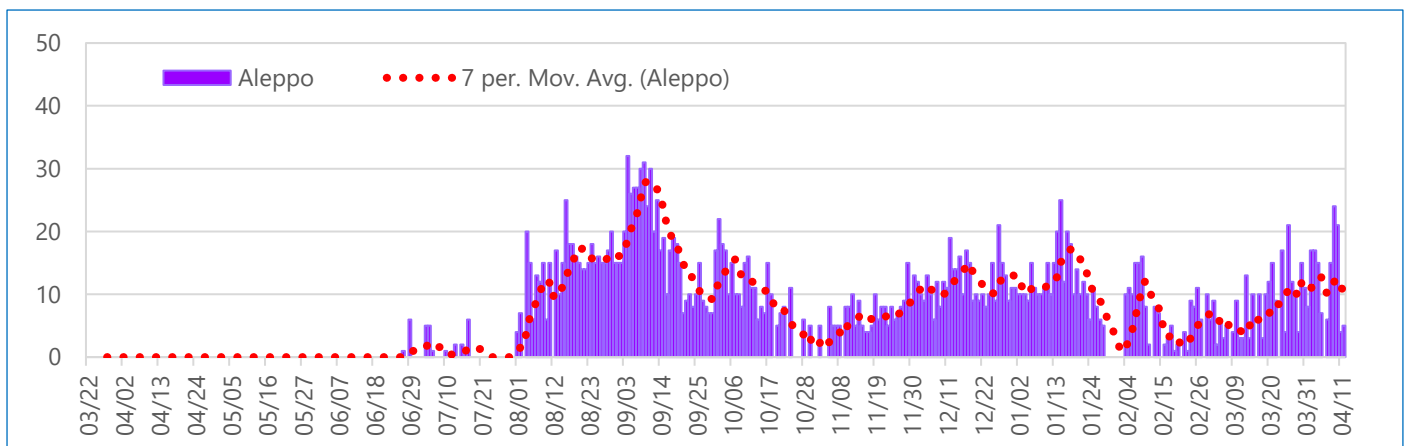
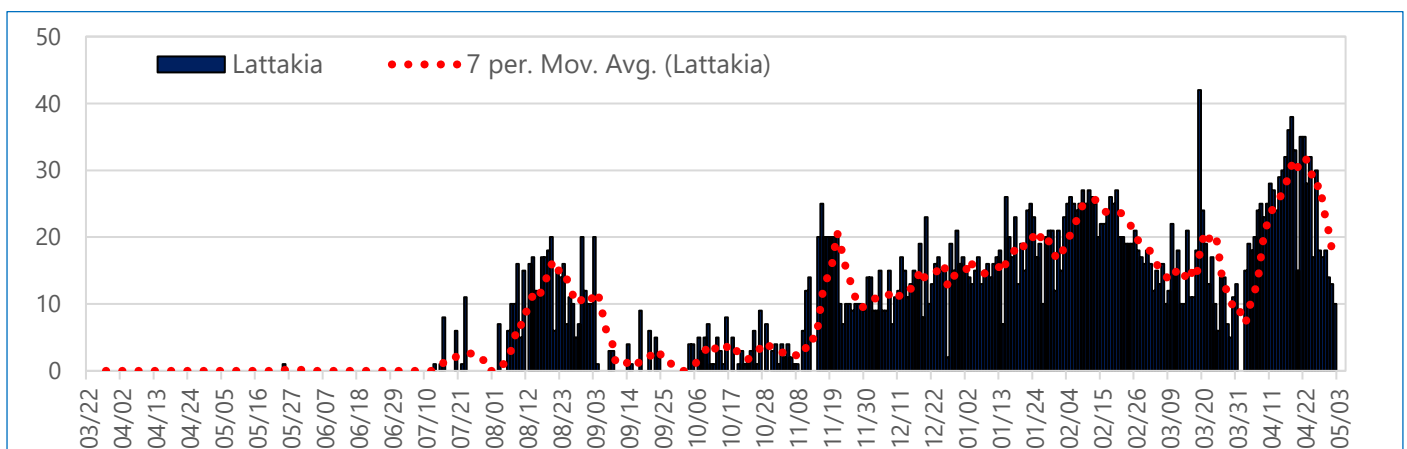
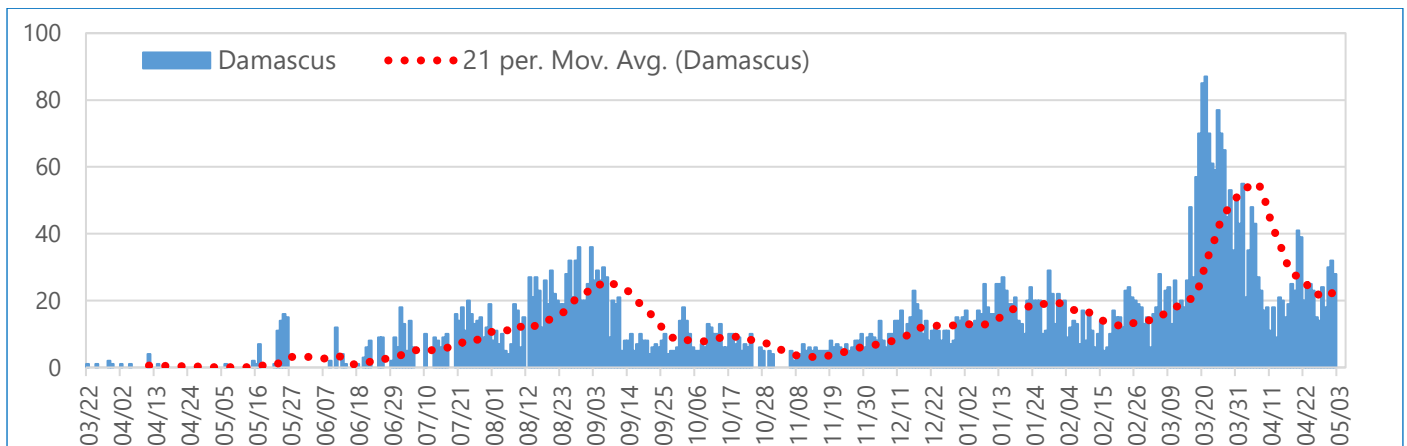


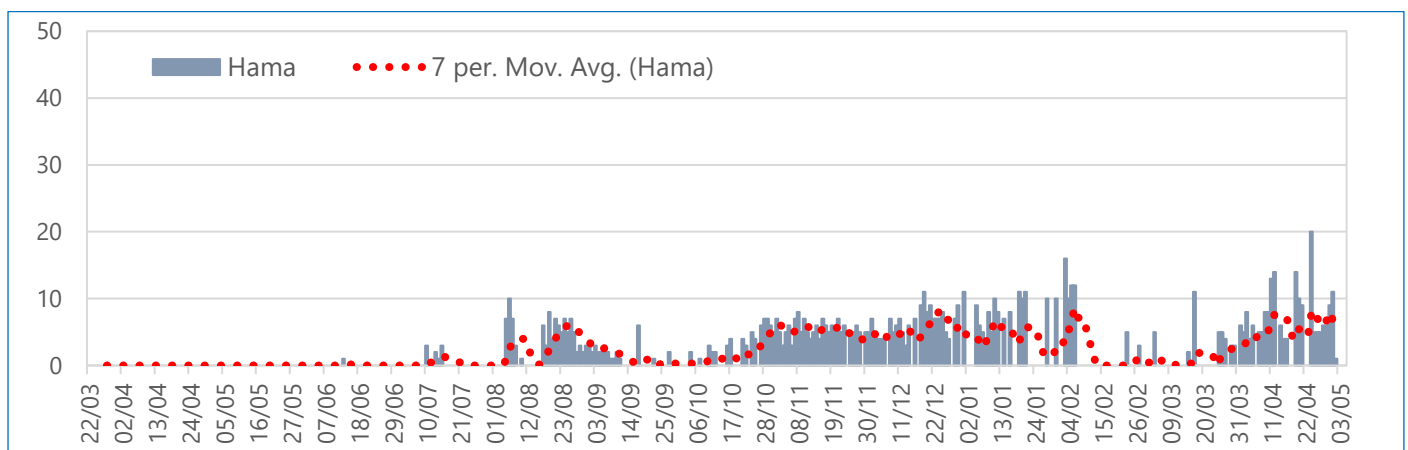
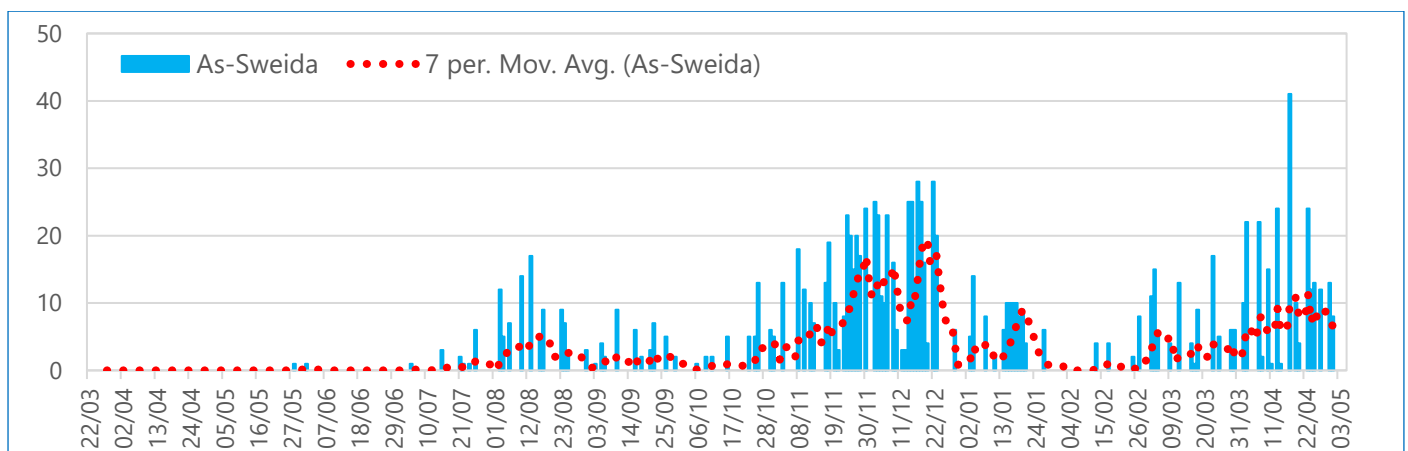
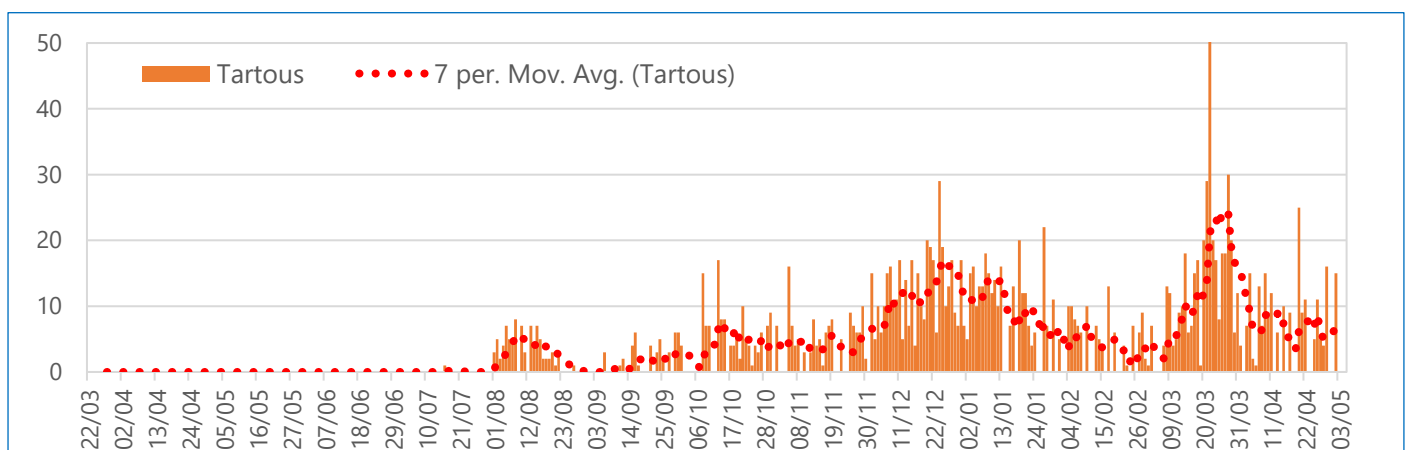
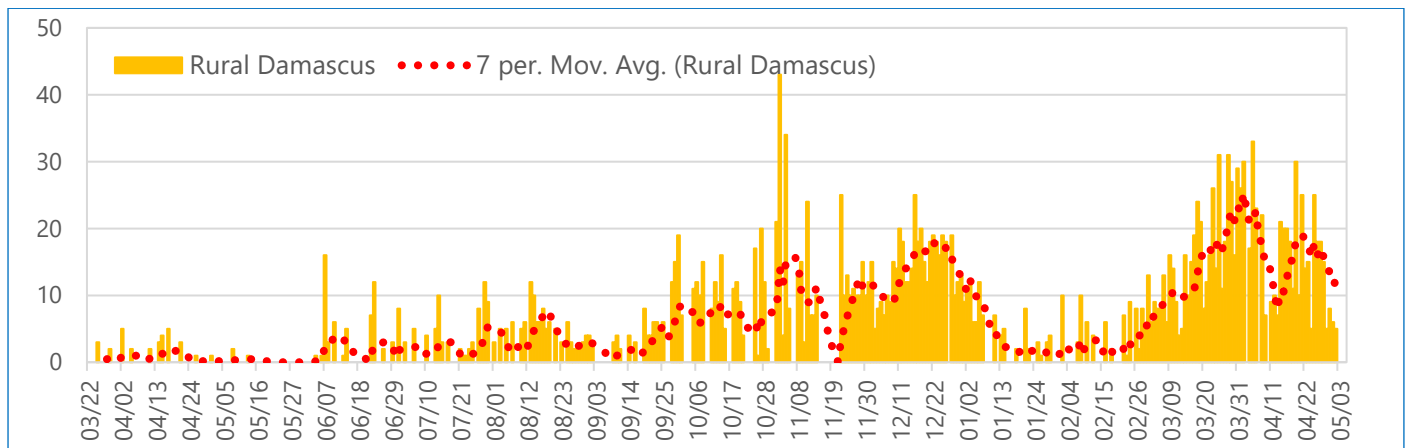
As of 05 May 2021, geographical distribution of confirmed reported COVID-19 cases was available on **100%** of cases (**22,898/22,898**). Of all cases, **22.6% (5,177)** reported from the **Damascus** governorate, followed by **15.6% (3,562)** from **Lattakia**, then **Aleppo - 13.4% (3,076)**; **Homs - 12.2% (2,790)**; **Rural Damascus - 10.6% (2,433)**; **Tartous - 7.7% (1,773)**; **Dar'a - 5.4% (1,228)**; **As-Sweida; - 5.2% (1,183)**; **Hama - 4.2% (951)**; **Quneitra - 2.0% (449)**, and the remaining **0.8%**, **0.4%** and **0.1%** are from **Deir-ez-Zor**, **Al-Hasakeh**, and **Ar-Raqqa** governorates, respectively.

*The figure below is showing the daily distribution of reported confirmed COVID-19 cases per selected governorate, 23 March 2020 – 05 May 2021, Syria.*



The figures below are showing the daily distribution of reported confirmed COVID-19 cases and rolling seven-day average in selected governorates, 23 March 2020 – 05 May 2021, Syria.

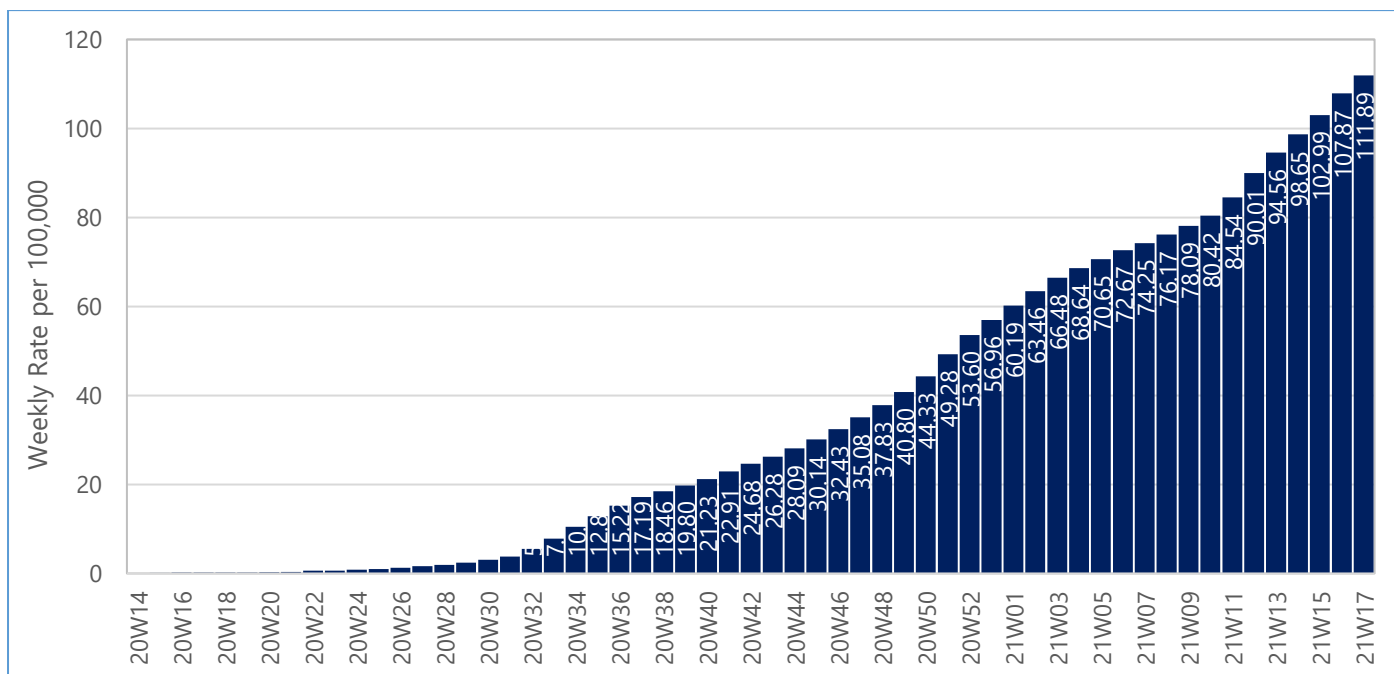






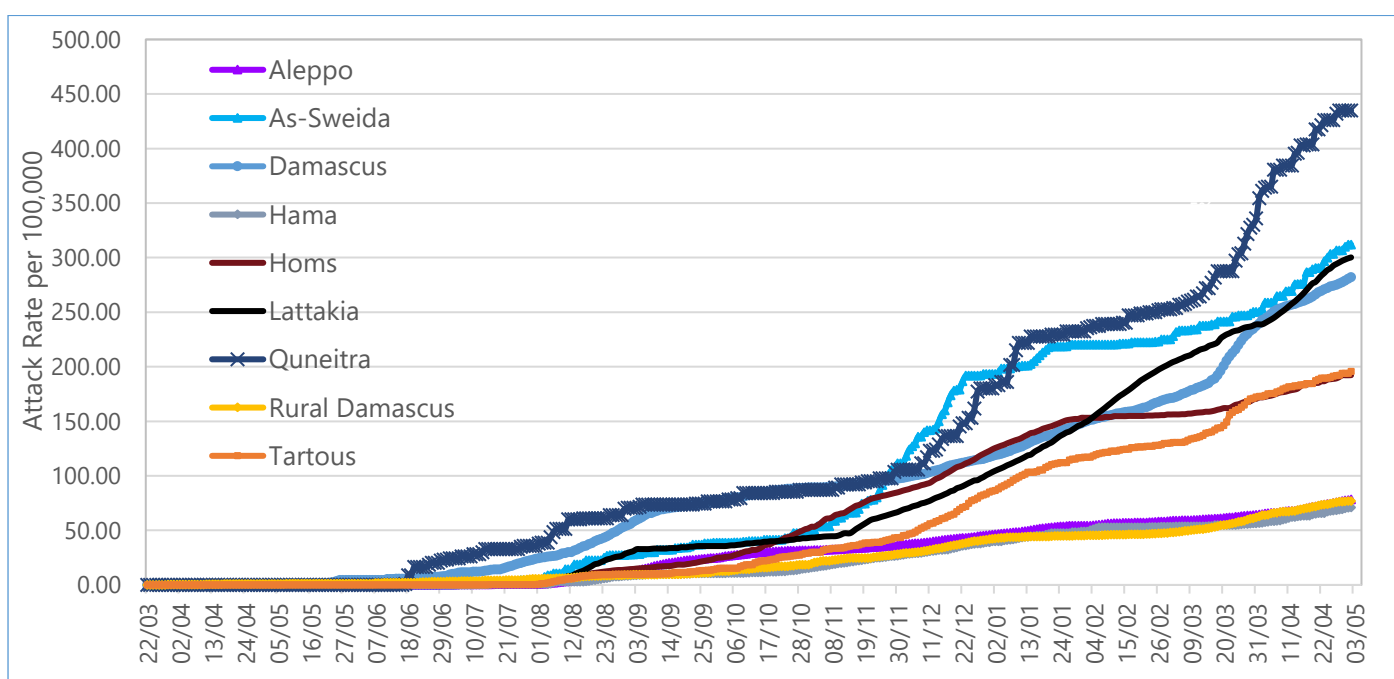
As of 05 April 2021, the overall attack rate (AR) in Syria is **299.6** per 100,000 and **100%** (13/13) of governorates, with the total population of 20,393,662 people, have reported confirmed COVID-19 cases. In the epidemiological week 17/2021, COVID-19 weekly AR increased by **3.7%** in comparison to the previous week (**111.89** and **107.87**) respectively.

**The figure below is showing the weekly COVID-19 attack rate (AR) per 100,000, 23 March 2020 – 05 May 2021, Syria.**



The highest AR is reported from **Quneitra (334.79/100,000)**, followed **As-Sweida** by governorate (**311.99/1,000,000**), **Lattakia** governorate (**300.21/100,000**), **Damascus** governorate (**282.07/100,000**), **Tartous** governorate (**195.62/100,000**), **Homs** governorate (**192.27/100,000**), **Dar'a** governorate (**120.95/100,000**), **Aleppo** governorate (**78.21/100,100**), **Rural Damascus (76.82/100,000)**, **Hama** governorate (**70.85/100,000**), **Deir-ez-Zor** governorate (**23.74/100.000**), **Al-Hasakeh** governorate (**08.39/100,000**), and the lowest attack rate (**1.99/100,000**) in **Ar-Raqqa** governorate.

**The following figure is showing the COVID-19 attack rate per 100,000 population in selected governorates, 23 March 2020 – 05 May 2021, Syria.**

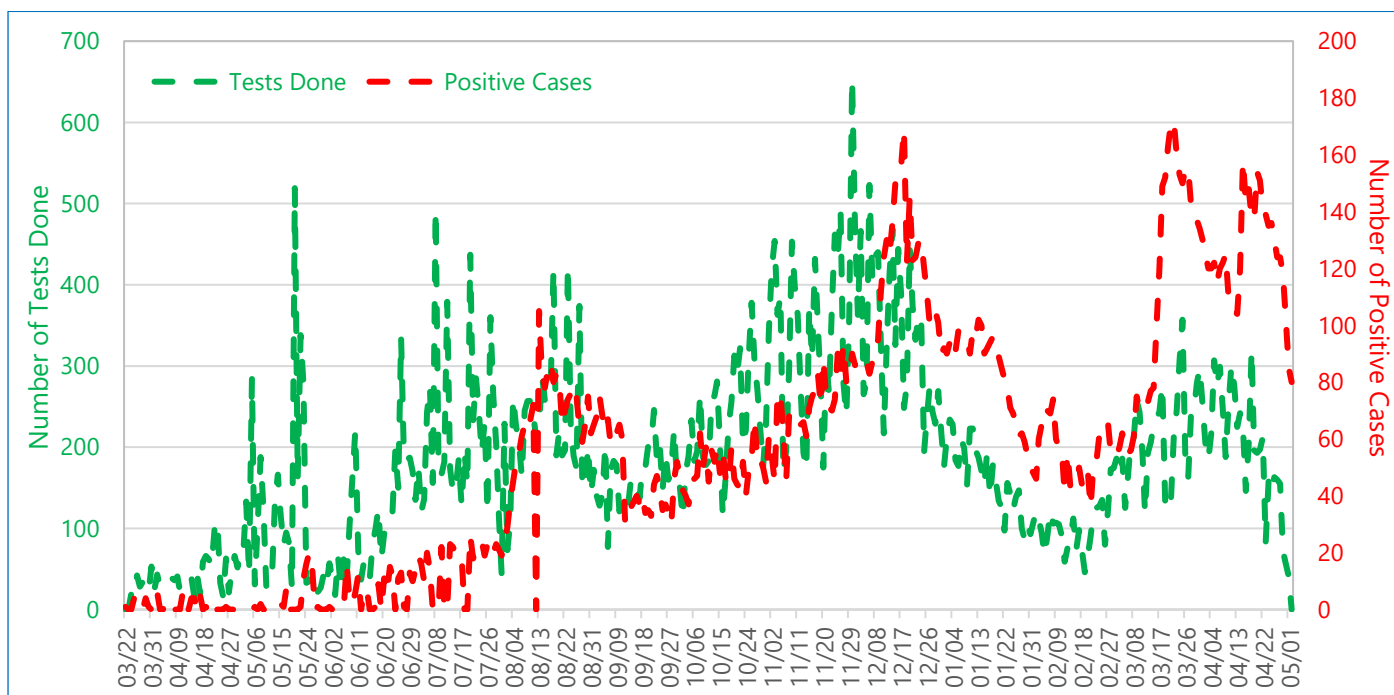
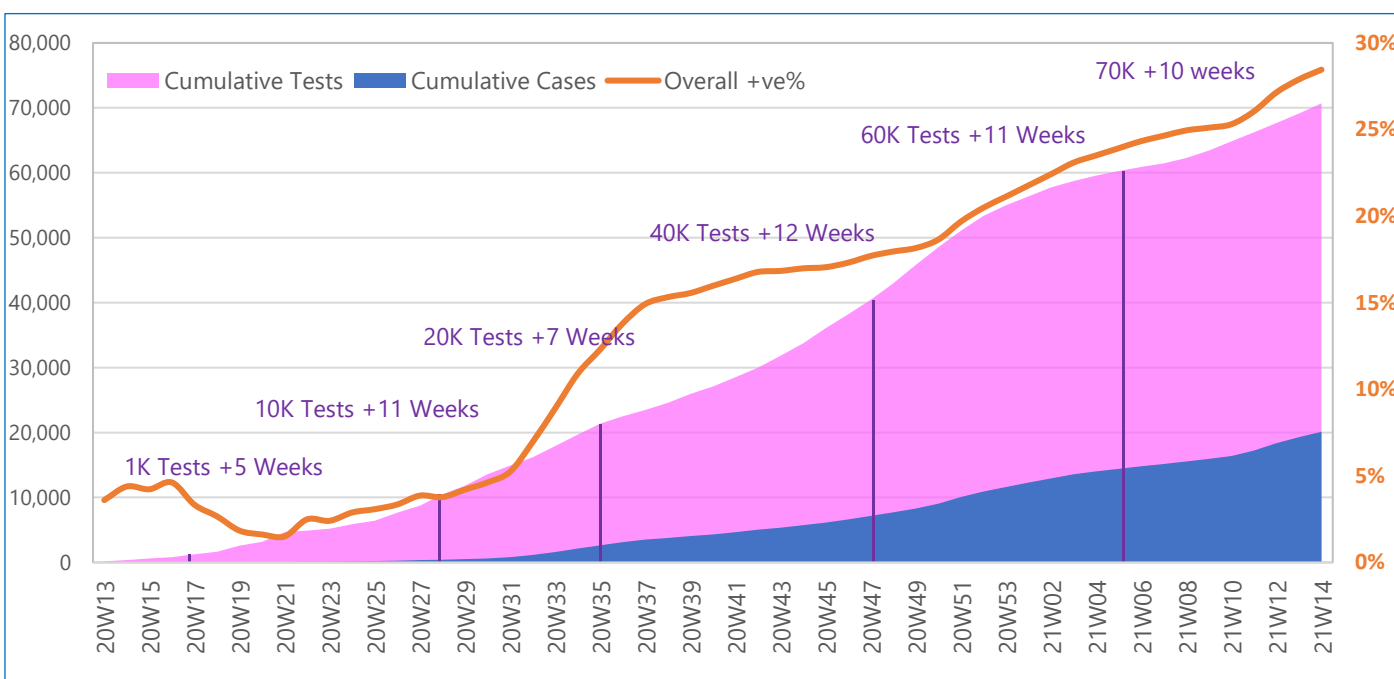


As of 05 May 2021, there are 24 functional RPC machines in 14 COVID-19 laboratories, out of them 8 COVID-19 laboratories (12 PCR machines) in Syria, 3 laboratories (7 PCR machines) in NWS and 2 laboratories (5 PRC machines) in NES.

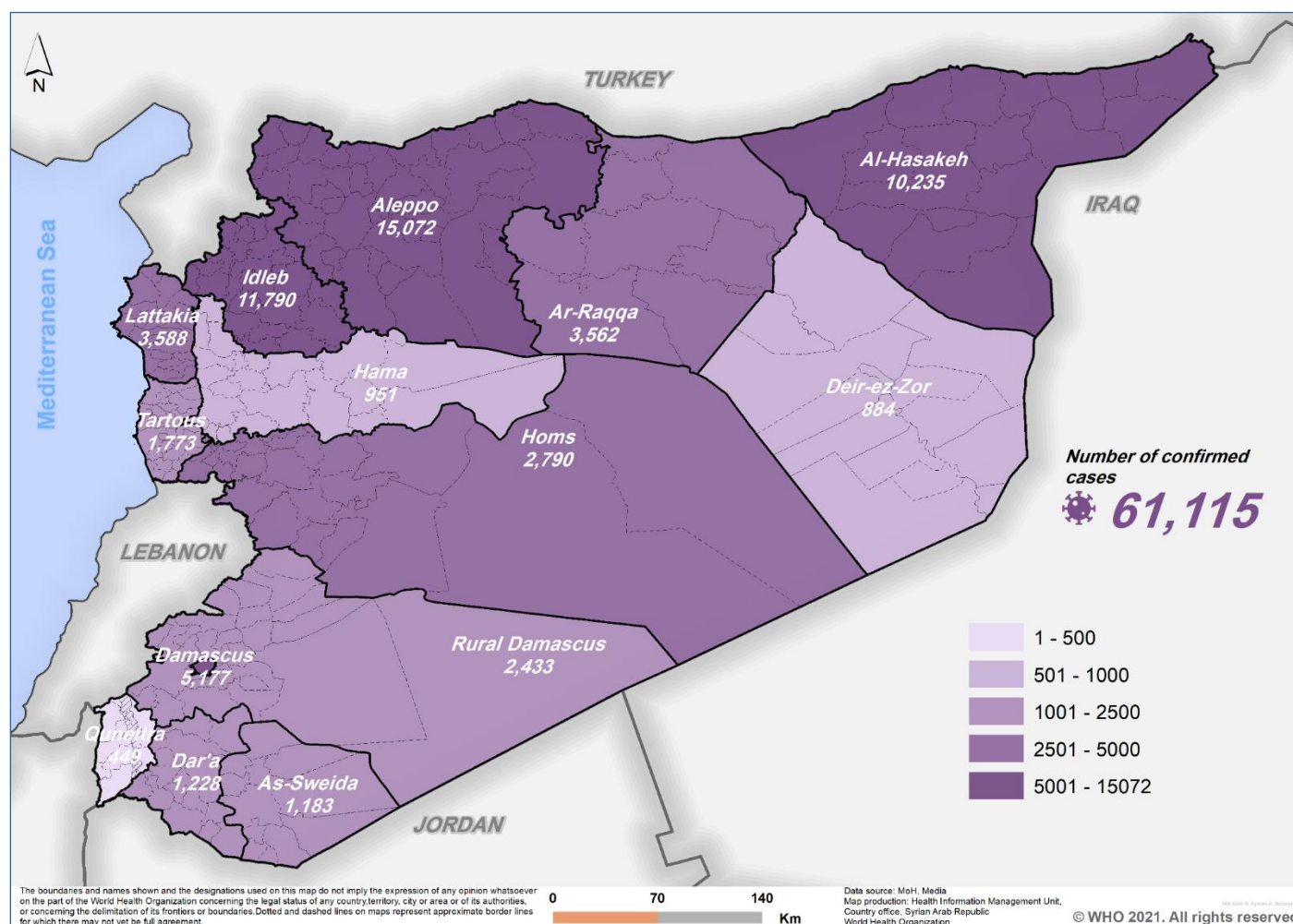
Between 23 March 2020 and 05 May 2021, a total of **240,081** COVID-19 tests with the overall positivity rate of **25.5%** and with overall testing rate of **1,177/100,000** in **whole of Syria**. Out of them **51.3% (123,129/240,081)** tested in **NWS**, **31.3% (75,171)** in **Syria** and **17.4% (41,781)** in NES.

The overall positivity rate of all **75,171** COVID-19 tests conducted in **Syria** (23 March 2020 – 05 May 2021) was **21.5%**. Since the beginning of COVID-19 testing in Syria, the first 1,000 tests were conducted in 5 weeks, reaching 5,000 tests in 6 weeks, 10,000 tests in 5 weeks, 20,000 tests in 6 weeks, 40,000 tests in 13 weeks, 50,000 tests in 12 weeks, 60,000 in 11 weeks and 70,000 in 10 weeks. The analysis of data on the two variables (weekly number of tests and number of confirmed cases) in Syria showed correlation coefficient (**R**) between the two variables as **0.509**.

**The graphs below are showing the cumulative number of Samples tested and Positivity rate, 23 March 2020 – 05 May 2021, Syria.**



The map below is showing the distribution of reported confirmed COVID-19 cases by governorates, 23 March 2020 – 05 May 2021, Syria.



#### 4. Useful COVID-19 links:

WHO Syria, COVID-19 Dashboard (English):

<https://app.powerbi.com/view?r=eyJrIjojNmY5OGYzNDYtNjZhMy00MwlyLWlyMzctYzcyMmI3ZDNIODk5liwidCI6ImY2MTBjMGI3LWJkMjQ0NGIzOS04MTBiLTNkYzI4MGFmYjU5MCIslmMiOjh9>

WHO Syria, COVID-19 Dashboard (Arabic):

<https://app.powerbi.com/view?r=eyJrIjojNTA0NWxZmYtMDJiMC00ZWU0LTI0NTktZTViZjYwYThjZmUzliwidCI6ImY2MTBjMGI3LWJkMjQ0NGIzOS04MTBiLTNkYzI4MGFmYjU5MCIslmMiOjh9>

COVID-19 situation in EMRO Region reports: <http://www.emro.who.int/health-topics/corona-virus/index.html>

Latest global WHO Weekly epidemiological update on COVID-19 - 04 May 2021:

<https://www.who.int/publications/m/item/weekly-epidemiological-update-on-covid-19---4-may-2021>

WHO COVID-19 Vaccines: <https://www.who.int/emergencies/diseases/novel-coronavirus-2019/covid-19-vaccines>

WHO COVID-19 Country and Technical Guidance: <https://www.who.int/emergencies/diseases/novel-coronavirus-2019/technical-guidance>

WHO COVID-19 Online Training: <https://openwho.org/channels/covid-19>.