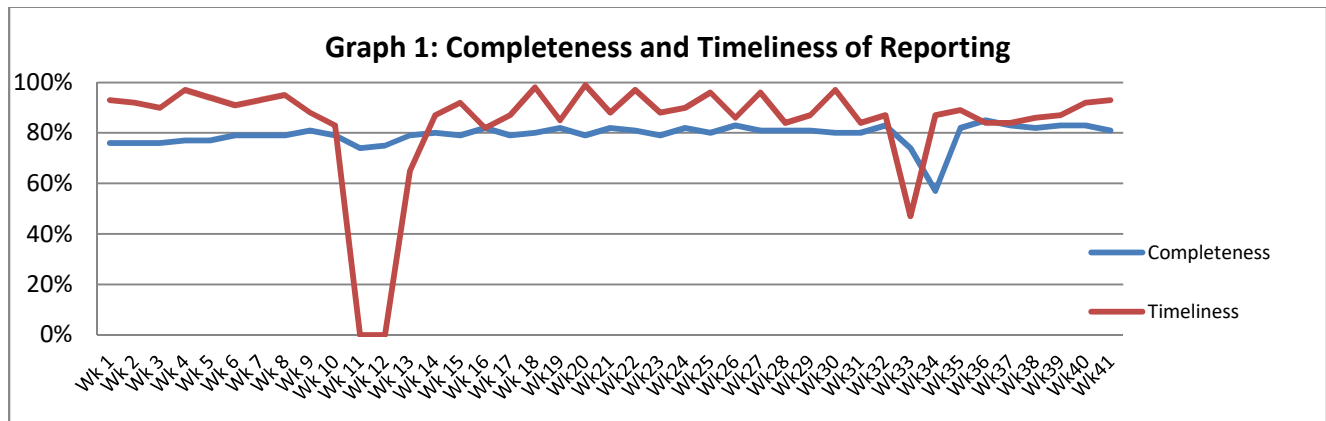


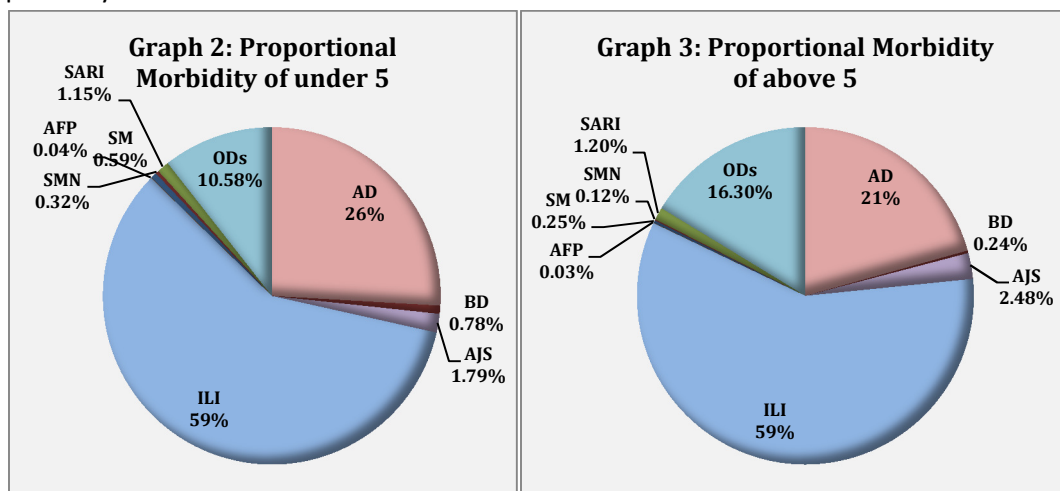
**Highlights:**

- ❖ 118 suspected Measles reported mainly from Hassaka, Deir Ezzor and Raqqa.
  - ❖ 102 suspected acute jaundice syndrome were reported in Daraa in week 41.
  - ❖ 7 cases of acute paralysis flaccid reported from Hamah (3), Damascus (1), Aleppo (1), Sweida (1), and Tartous (1)
- ❖ Completeness & Timeliness of Reporting**
- ❖ The overall completeness of reporting was 81 %; (1024 out of total 1265 EWARS sentinel sites). 14 governorates have reported this week.
  - ❖ Timeliness of reporting was 93%.

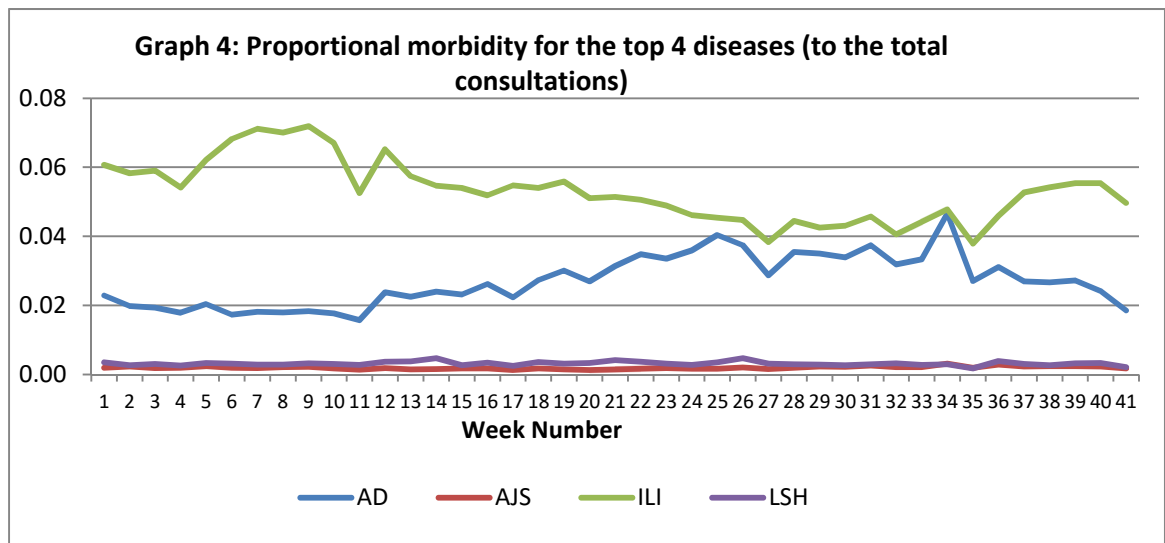


**❖ The Morbidity Cases**

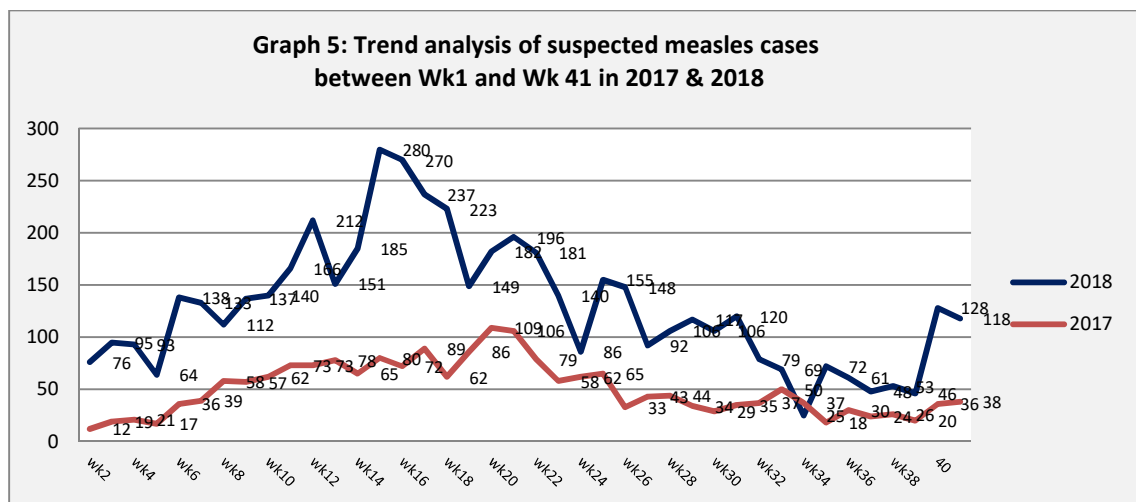
- ❖ Out of a total of 333,319 consultations, 29,309 EWARS notifiable cases were reported; of which 17,224 cases were influenza like illness (65%), 6,757 cases were acute diarrhoea (26%), 636 were acute jaundice syndrome, 345 were severe acute respiratory infection, 118 were suspected measles, 142 were bloody diarrhoea, 62 were suspected meningitis, and 7 cases of acute flaccid paralysis.
- ❖ Graphs 2 and 3 below show the proportional morbidity among < 5 and ≥ 5 year age groups respectively.



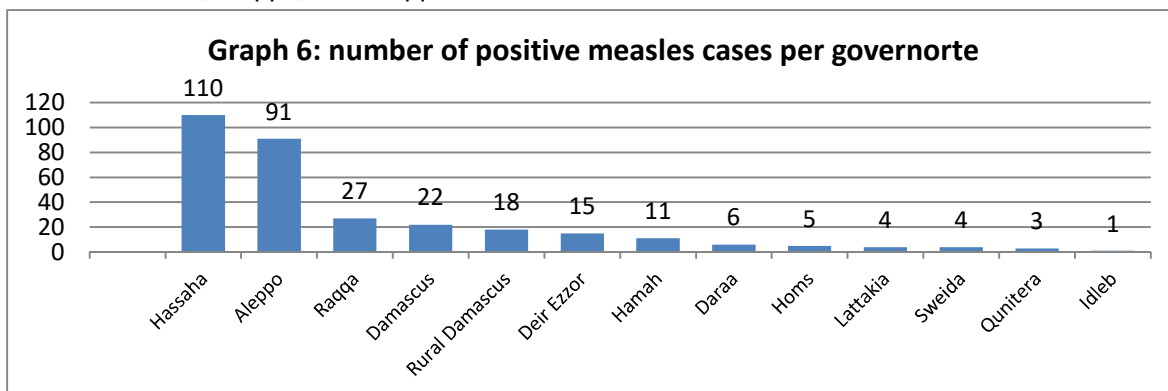
- ❖ Acute diarrhoea constitutes (26%) among < 5 and (21%) among ≥ 5, while influenza-like illness constitutes (59%) both of the cases among <5 and cases among ≥ 5.
- ❖ 48% of the cases were distributed among males. 51% of the cases were distributed among ≥5 age group.
- ❖ In total 4,018 cases were reported as “other diseases”. The most important diseases reported within this group were; 774 cases of leishmaniasis (mostly from Aleppo, Idleb and Deir Ezzor), 291 cases of brucellosis, 317 cases of typhoid, 6 cases of tuberculosis, 46 pertussis, and 64 mumps.
- ❖ Graph 4: shows the trend analysis of top four diseases to total consultations.



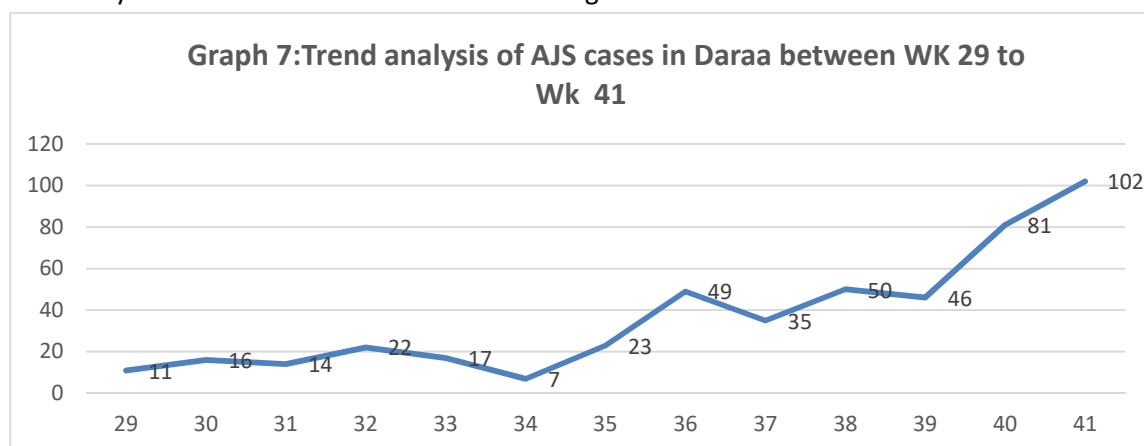
- ❖ Graph 5: the below graph shows the trend analysis of suspected measles cases reported through EWARS. The graph shows increase in the number of reported cases in week 40 and 41.



- ❖ Graph 6 shows the number of positive Measles cases per governorate, most of the cases were been detected in Hassakah, Aleppo, and Raqqa.



- ❖ Graph 7 shows the trend analysis of acute jaundice syndrome cases, the increase started in week 35, and reported mainly from the eastern rural areas of Daraa governorates.



- ❖ Table 1 shows comparison between reported cases in week-41 and week-40 2018.

Table 1: Comparison between reported cases for week 40 and week 41 in 2018.

Disease	Week 40	Week 41
AD	6,596	6,757
BD	157	142
AWD	0	0
AJS	631	636
ILI	14,400	17,224
AFP	4	7
SM	128	118
SMN	54	62
SARI	250	345
TYF	310	317
PER	56	46
LSH	833	744

	BRU	290	291
	TB	8	6
	SCA	686	610
	LIC	1114	992
	CHP	330	293
	MUM	43	64
	Others	522	655
	<b>Total</b>	<b>26412</b>	<b>29309</b>

## ❖ The Response

### Acute Jaundice Syndrome, Daraa Governorate

- Increase of suspected Hepatitis A cases has been reported in Dar'a governorate since week 35. The increase reported mainly from the eastern rural areas. The number of reported acute jaundice syndrome cases in week 41 is 102 cases, the cumulative number of cases reported since week 35 is 401.
- A meeting with Daraa DoH and Moh to follow up the response to the increase of Hepatitis A, and the following points were made through the meeting:
  - The diagnosis was based on liver functions tests (ALT, AST, Bilirubin) and clinical signs.
  - Detection of HAV in water is not conducted in public health laboratories, nor the ministry of water resources.
  - Blood tests for antibodies (IgM, and IgG) and Elisa tests are not conducted at the public health laboratories..
  - Most of the cases are detected in the newly accessible areas of eastern rural in Dar'a. Data collection is mainly made through the field visits and through regular visits of DoH mobile team. And there are no fixed reporting sites, therefore, no regular surveillance reports are reported from these areas.
  - The actual number of cases is expected to be much higher than reported cases, since many patients request for health care from pharmacies and private clinics.
  - The main water network is not contaminated, however, it is only provided once a week for households, and people get water from other sources like undergrounds private wells and water tankers, which are not been treated with Chlorine, and bacterial tests showed contaminated water.
  - DoH has conducted health education and distribution of aqua-tablets to households in some areas.

Action to be taken by DoH with WHO support:

- Collect detailed data on the cases and prepare line-list of suspected cases.
- Strengthen the surveillance system in the newly accessible areas and conducting weekly investigation visits to affected areas.
- WHO to coordinate with ministry of water and provide DoH with a device to measure quality of water by using the bioluminescence method.  
WHO will coordinate with unicef to support DoH with aqua-tablets based on the estimated needs and to test the concentration of free chlorine in water.

### Acute flaccid paralysis:

National bOPV campaign started this week 7-11 October 2018 in all governorates, the preliminary result for the first 3 days is more than 1,147,000 out of 2,534,534 children (0-59 months) were vaccinated across all governorates except rural Deir-ez-Zor (where the campaign is postponed to next week once security approvals are provided).

**Table-2: Distribution of cases per age group, and by Governorate-week-41, 2018:**

Code	age group	Idleb	Hassaka	Raqqa	Sweida	Qunaitra	Lattakia	Aleppo	Hama	Homs	Daraa	Damascus	DierEzor	Rural Damascus	Tartous	Grand Total
AD	< 5	131	181	79	119	57	479	426	143	79	111	599	466	242	202	3,314
	≥ 5	122	292	110	118	63	270	608	211	162	116	488	520	246	117	3,443
BD	< 5	0	11	11	4	0	2	0	0	0	4	2	4	0	0	38
	≥ 5	0	16	37	7	0	3	0	0	0	5	1	35	0	0	104
AWD	< 5	0	0	0	0	0	0	0	0	0	0	0	0	0	0	0
	≥ 5	0	0	0	0	0	0	0	0	0	0	0	0	0	0	0
AJS	< 5	7	14	58	28	5	20	33	51	20	77	39	18	17	11	398
	≥ 5	8	7	52	10	3	2	17	7	5	25	9	89	4	0	238
ILI	< 5	0	260	25	242	300	1,609	1,673	154	275	563	629	968	1,178	1,536	9,412
	≥ 5	5	249	36	239	172	1,983	1,400	180	221	359	441	984	762	781	7,812
AFP	< 5	0	0	0	1	0	0	0	1	0	0	0	0	0	1	3
	≥ 5	0	0	0	0	0	0	1	2	0	0	1	0	0	0	4
SM	< 5	3	25	7	0	0	2	1	0	0	1	0	0	0	1	40
	≥ 5	2	26	8	0	0	4	3	0	1	6	4	24	0	0	78
SMN	< 5	0	2	1	0	0	1	0	7	0	0	7	0	0	1	19
	≥ 5	0	0	12	2	0	1	3	1	0	0	7	17	0	0	43
SARI	< 5	0	29	15	11	0	9	0	25	0	0	52	41	1	9	192
	≥ 5	0	81	10	1	0	3	0	20	0	0	7	26	0	5	153
Others	< 5	393	169	31	38	41	83	444	202	85	68	31	746	271	11	2,613
	≥ 5	454	109	14	46	11	25	186	43	68	9	14	298	124	4	1,405
Total Sum of < 5		534	691	227	443	403	2,205	2,577	583	459	824	1,359	2,243	1,709	1,772	16,029
Total Sum of ≥ 5		591	780	279	423	249	2,291	2,218	464	457	520	972	1,993	1,136	907	13,280
Total		1,125	1,471	506	866	652	4,496	4,795	1,047	916	1,344	2,331	4,236	2,845	2,679	29,309